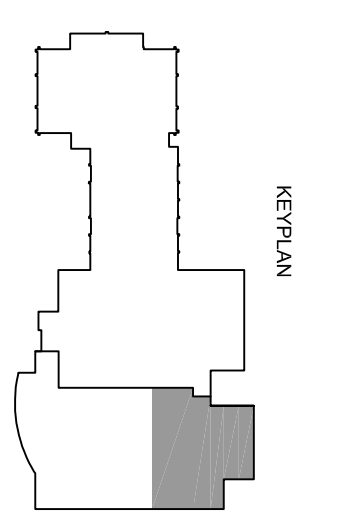
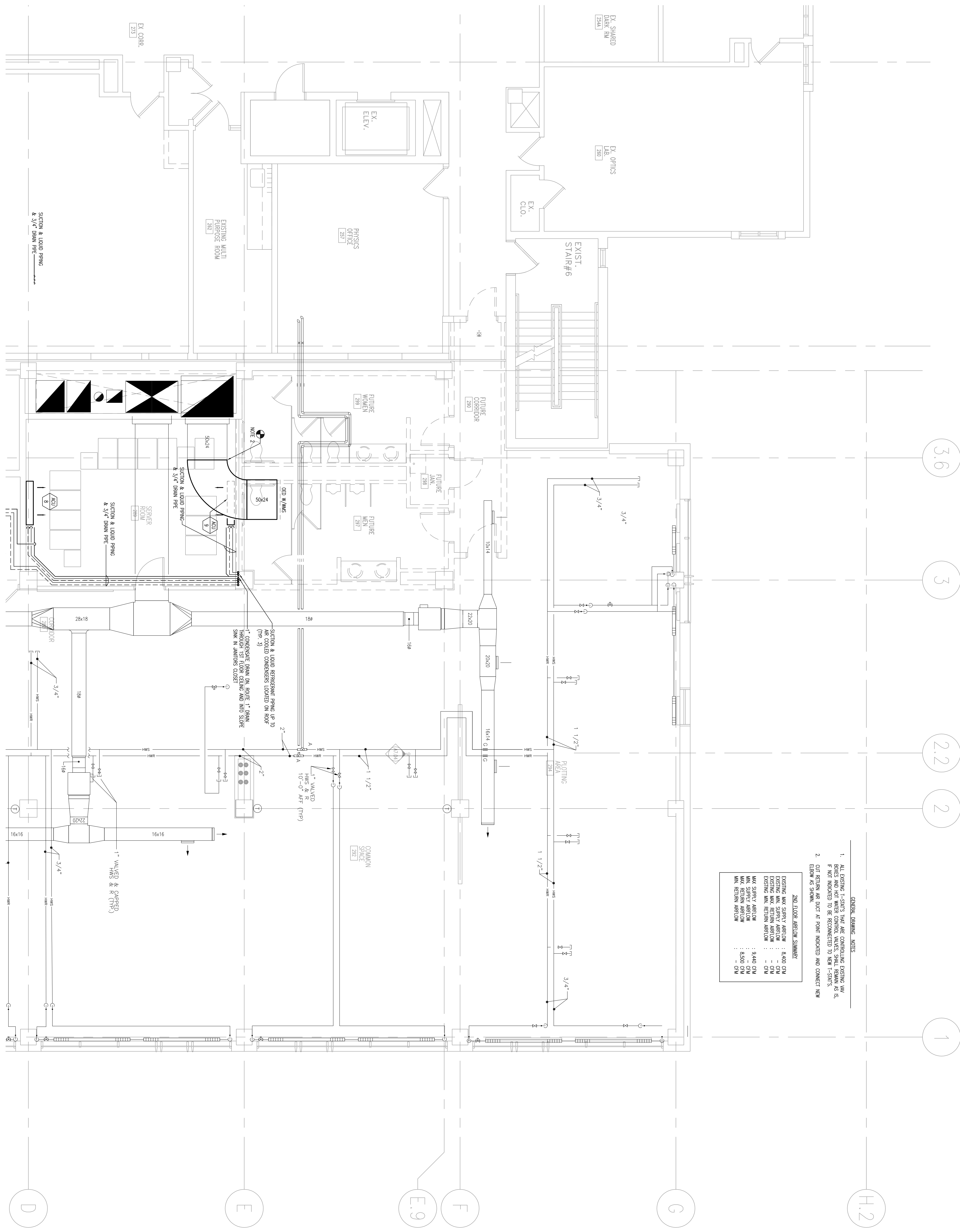


GENERAL BRANDING NOTES

- ALL EXISTING T-SHOTS, PIPES AND CONDUITS ARE TO BE REBRANDED AS SHOWN. EXISTING T-SHOTS AND PIPES TO BE REBRANDED TO NEW T-SHOTS, IF NOT INDICATED TO BE RECONNECTED TO NEW T-SHOTS.
- OUT RETURNS ARE DUCT AT POINT INDICATED AND CONNECT NEW ELBOW AS SHOWN.

2ND FLOOR AIRFLOW SUMMARY

EXISTING MAX SUPPLY AIRFLOW	: 8400 CFM
EXISTING MAX RETURN AIRFLOW	: - CFM
EXISTING MAX SUPPLY AIRFLOW	: - CFM
EXISTING MAX RETURN AIRFLOW	: - CFM
MAX SUPPLY AIRFLOW	: 9400 CFM
MAX RETURN AIRFLOW	: 8500 CFM
MAX RETURN AIRFLOW	: - CFM



OWNER REVIEW

NAME	DATE

ISSUE LOG

NO.	DATE	DESCRIPTION
06.21.06	ISSUED FOR CONSTRUCTION	
05.03.06	SCOPE REVISION	
03.22.06	100% GC REVIEW	
A	03.16.06	PROGRESS PRINT

UNIVERSITY OF SOUTHERN MAINE
77 FALMOUTH STREET
PORTLAND, MAINE

**RESEARCH WING
PHASE III FIT-OUT**

**SECOND FLOOR
PART A
PLAN**

SCALE 1/4"=1'-0"

DRAWN BY	FV
CHECKED BY	PHQL ARCH / ENGR. GJI
PROJ. MGR.	RCH
JOB NO.	03048.10

© SYMES, MAIN & MOORE ASSOCIATES, INC. 2006

M1.02a