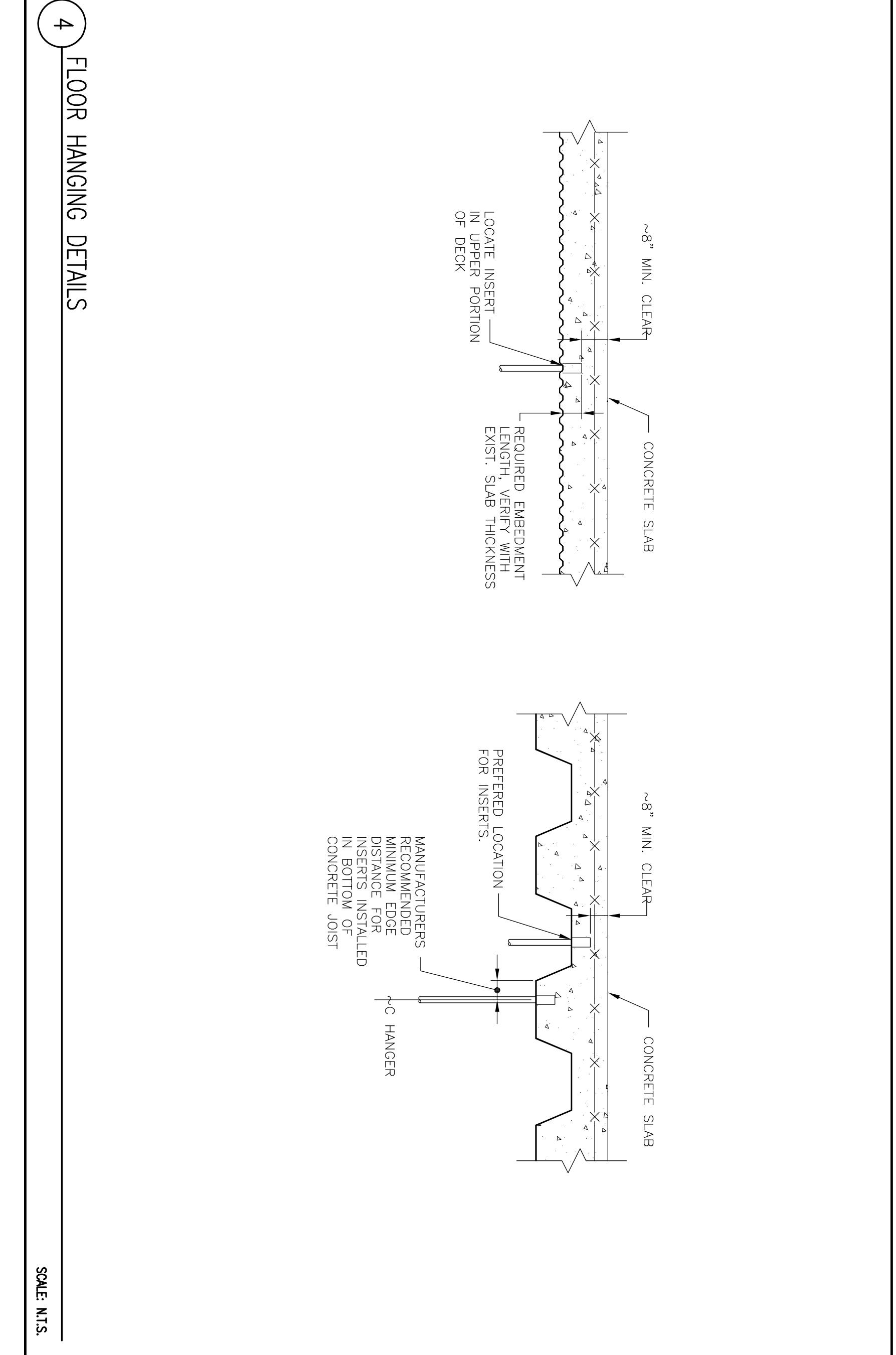
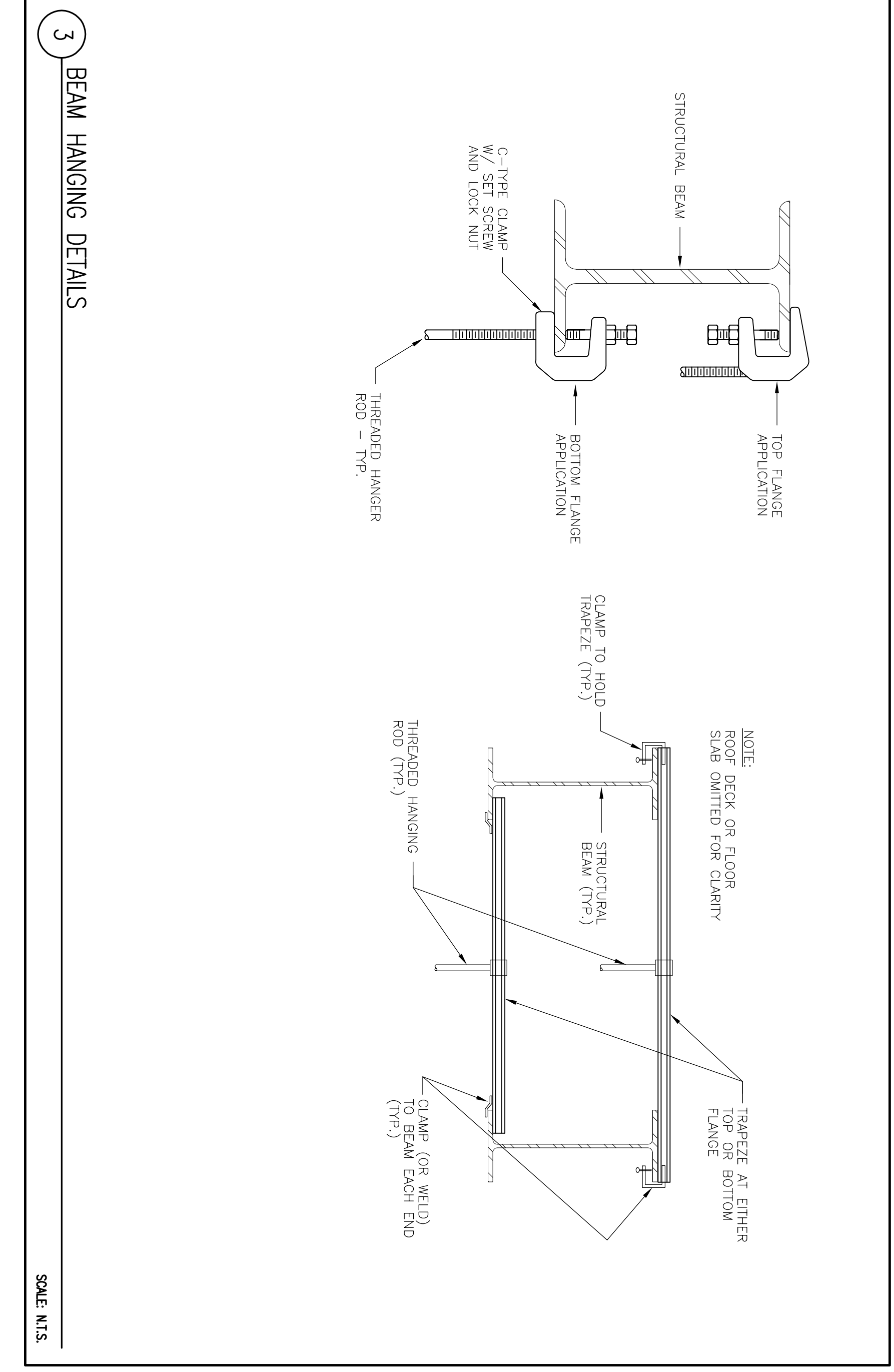
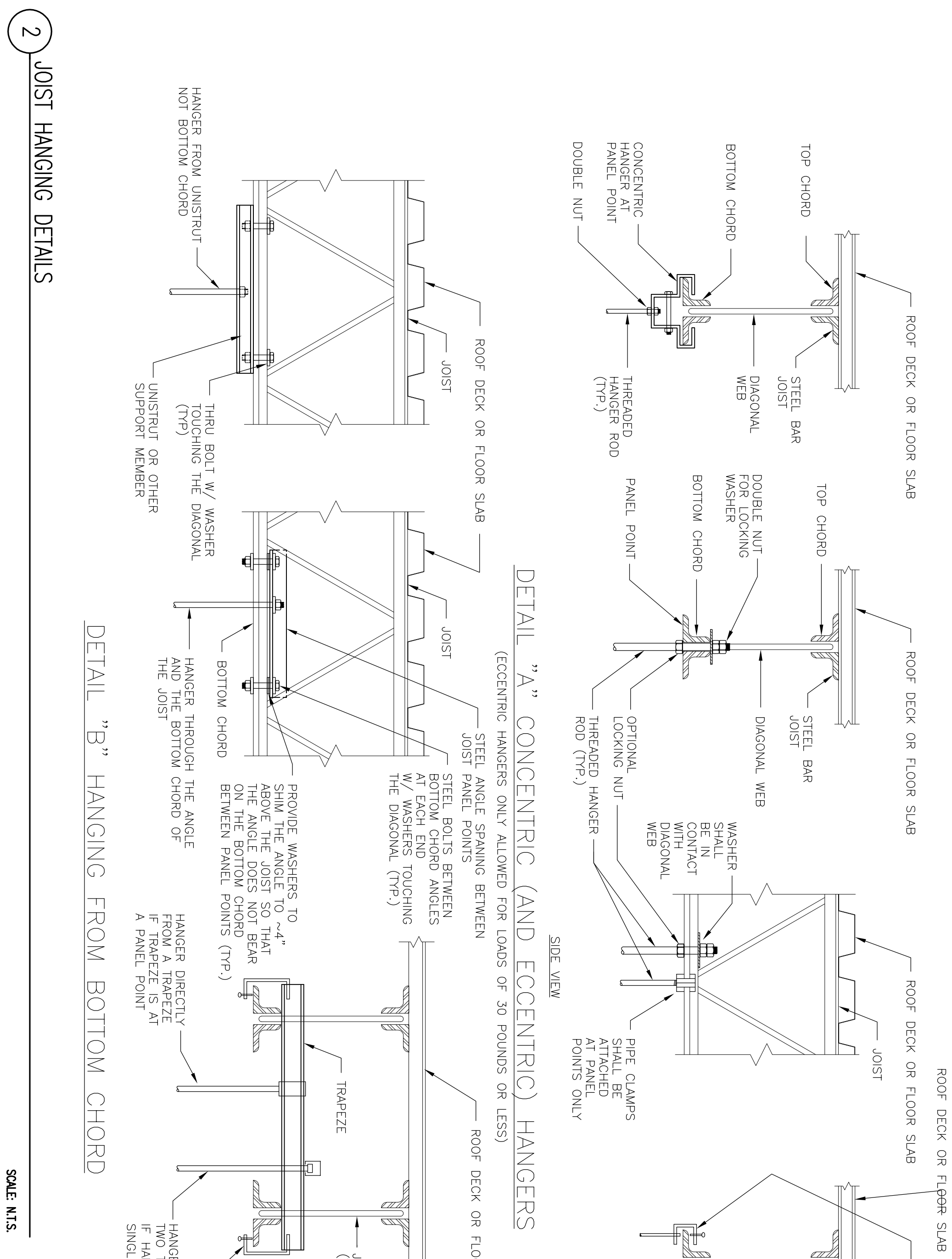
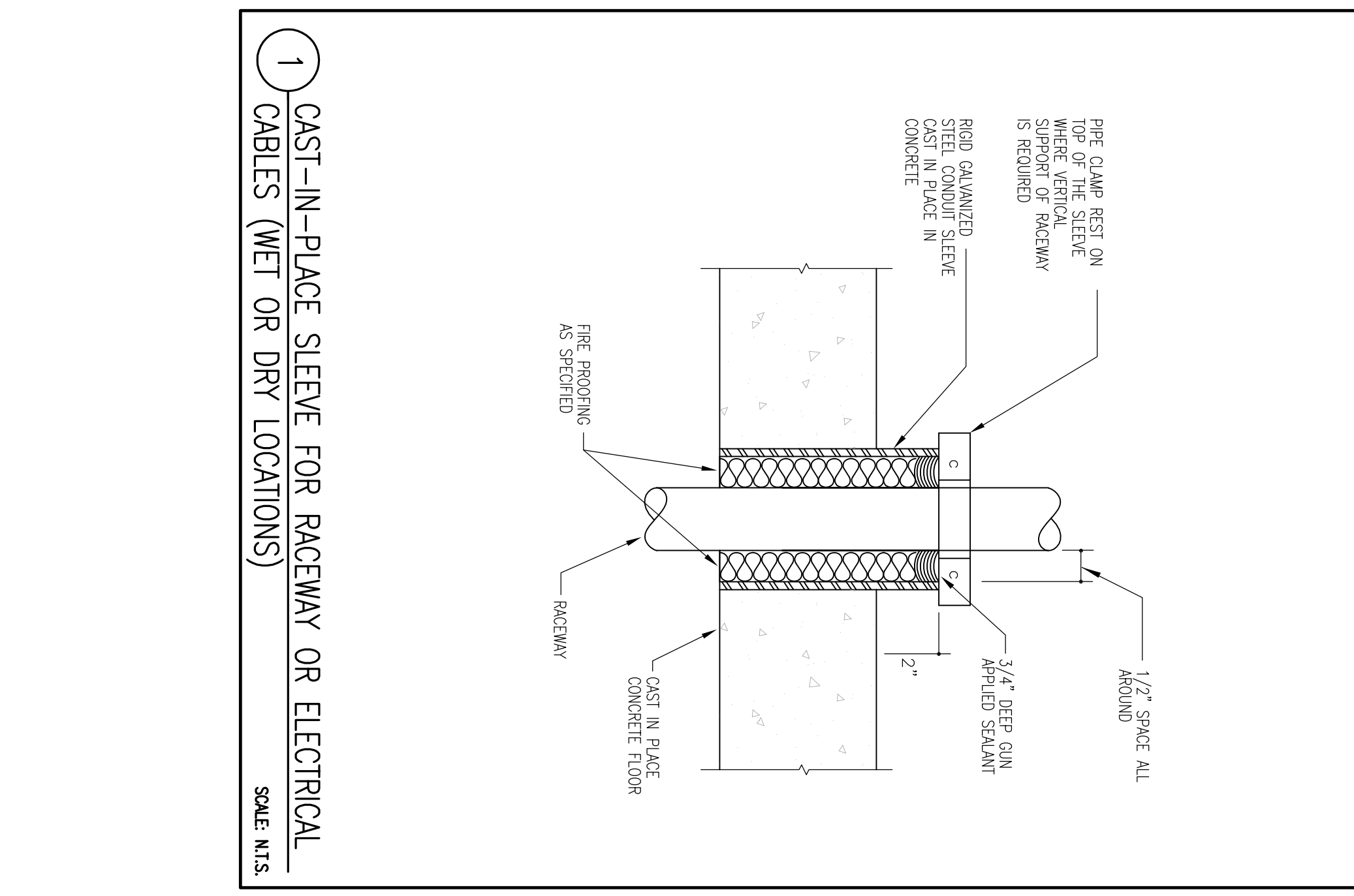


OWNER REVIEW

NAME	DATE

06.21.08	ISSUED FOR CONSTRUCTION	
09.03.08	SCORE REVISION	
03.22.09	100% QC REVIEW	
B	03.16.09 PROGRESS PRINT	
A	03.08.08 80% PROGRESS PRINT	
NO.	DATE	DESCRIPTION



JOIST HANGING NOTES:

- HANGERS AND SUPPORTING MEMBERS SHALL BE LOCATED AT PANEL POINTS OR JOISTS.
- CONDUITS AND EQUIPMENT SHALL NOT BE HUNG FROM STEEL BEAM OR FROM BRACING ANGLES.
- WHERE POSSIBLE, ALL HANGERS SHOULD BE SUSPENDED FROM PANEL POINTS AT APPROXIMATELY 5'-0" SPACING.
- CONDUITS 2 1/2" AND SMALLER RUNNING PARALLEL TO BEAM JOISTS MAY BE HUNG FROM A SINGLE JOIST.
- PIPING 3" AND LARGER RUNNING PARALLEL TO BEAM JOISTS SHALL BE SUPPORTED MID-WAY BETWEEN TWO JOISTS AND SHALL BE HUNG FROM PANEL POINTS AT APPROXIMATELY 5'-0" SPACING.
- PAIRING 4" AND LARGER IN SIZE RUNNING PERPENDICULAR TO AND SUSPENDED FROM JOISTS SHALL BE SUPPORTED FROM EVERY JOIST AT PANEL POINT.
- PAIRS OF CONDUITS SHALL HAVE HANGERS STAGGERED BETWEEN ALTERNATE JOISTS OR SHALL BE HUNG FROM EVERY JOIST.
- THE SLIP OF ALL BUILDING TRAGERS HANGING FROM A PANEL POINT SHALL NOT BE USED FOR HANGING. ALL HANGING SHALL BE SUBMITTED FOR APPROVAL OF THE ARCHITECT.
- ECCENTRIC HANGERS (E-C-CLAMPS) WILL BE ALLOWED FOR PIPING 3/8" AND SMALLER AND OTHER TRAGERS WHERE THE HANGER SPACING LIMITS THE TOTAL LOADS ON TOP OR BOTTOM CHORD AT PANEL POINTS ONLY.
- ALL WELDING OF JOISTS SHALL BE PARALLEL TO JOIST CHORDS.
- COORDINATE HANGING LOCATIONS AND DETAILS WITH ALL OTHER TRAGERS. ATTEND A PRE-HANGING CONFERENCE WITH GENERAL CONTRACTOR, THE ARCHITECT, AND ANOTHER TRADES TO REVIEW HANGING METHODS AND COORDINATE HANGING LOCATIONS.
- SUBMIT ALTERNATE METHODS FOR HANGING TO ARCHITECT FOR REVIEW AND DO NOT USE WITHOUT WRITTEN APPROVAL FROM ARCHITECT.