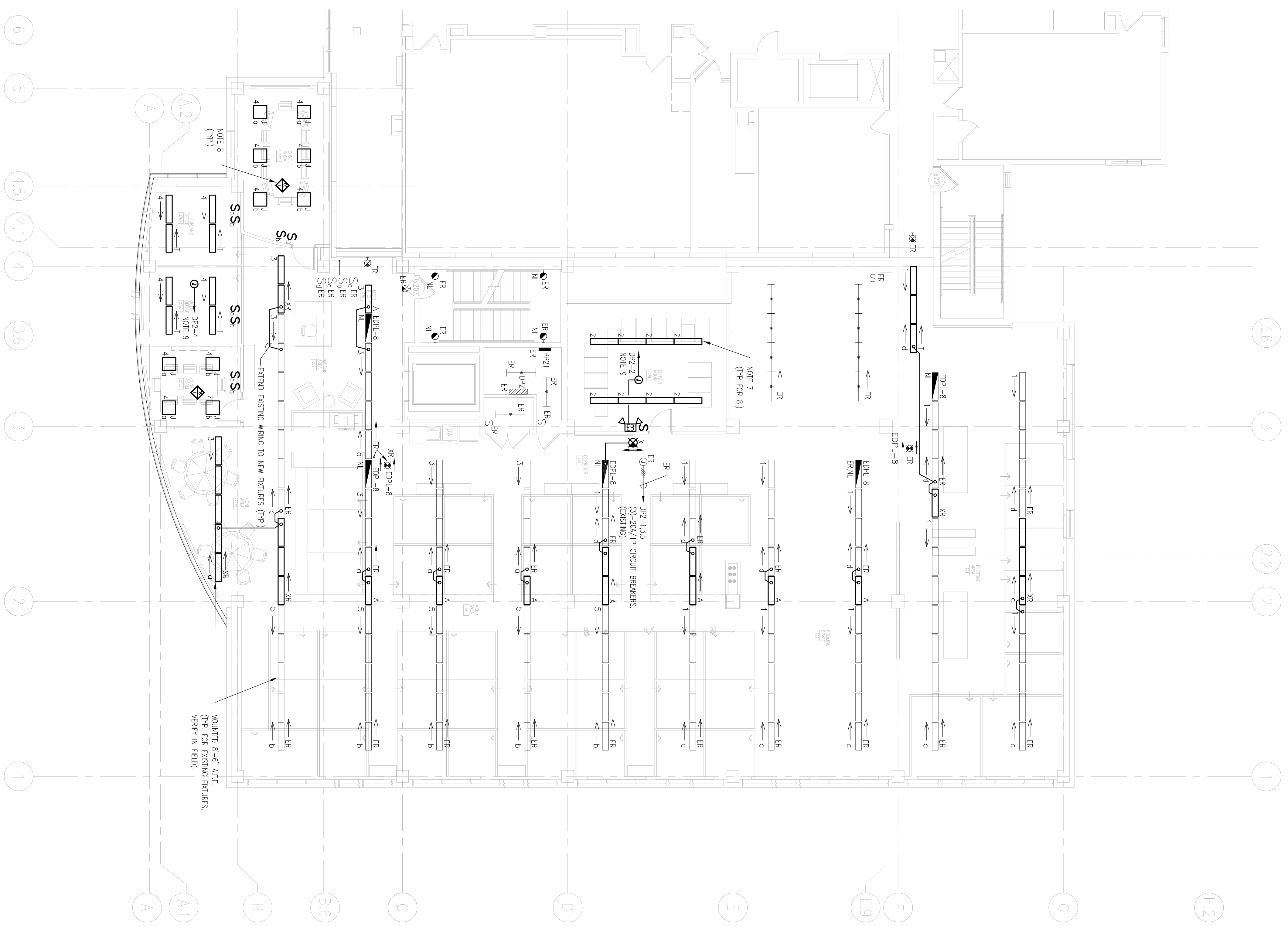


- NOTES:
1. PROVIDE 9'-0" AFF. TO BOTTOM OF "X" AND "Y" FRIGERS AND 8'-0" TO BOTTOM OF FRIGERS TYPE "B" UNLESS INDICATED OTHERWISE.
 2. PROVIDE WIRING TO RELOCATING DOOR SWEET LIGHT.
 3. TYPICAL 2-LAMP DOUBLE-SWITCHED INTRUCE SWITCH "S1" CONTROLS TWO OFFICE LAMPS, SWITCH "S2" CONTROLS ONE CENTRAL LAMP IN ALL FLOORPLANS.
 4. PROVIDE "NORMAL/EMERGENCY" RELAY BY-PASS WIRING, REFER TO DETAIL ON SHEET E7.01.
 5. "X" PROVIDES TYPICAL EXISTING LIGHT TO REMAIN WITH ASSOCIATED WIRING, PROTECT FROM DAMAGE DURING CONSTRUCTION, LIGHT AND WIRING SHALL BE EXAMINED AND REPAIRED IF REQUIRED.
 6. RELOCATE EXISTING LIGHT AS INDICATED AND EXTEND EXISTING WIRING TO NEW LOCATION, MAINTAIN/RESTORE CONTINUITY OF EXISTING WIRING TO REMAINING EXISTING LIGHTS.
 7. INSTALL AND WIRE A SURFACE-MOUNTED 2-LAMP REPARATION FRIGER FINISHED BY OWNER, PROVIDE NEW LAMPS.
 8. OCCUPANCY OR WALL-MOUNTED OCCUPANCY SENSOR FOR WIRING, REFER TO LIGHTING CONTROL DIAGRAM ON DWG. E7.01. EXACT LOCATION OF OCCUPANCY SENSOR SHALL BE COORDINATED WITH MANUFACTURER'S RECOMMENDATIONS.
 9. WIRE TO SPACE 240/120 CIRCUIT BREAKER IN EXISTING PANEL, CIRCUIT NUMBERS ARE SHOWN FOR REFERENCE ONLY, VERIFY AVAILABLE SPACE CIRCUIT BREAKERS IN FIELD.



OWNER REVIEW

NAME	DATE

06/21/08	ISSUED FOR CONSTRUCTION	
06/03/08	SCHEMATIC DEVELOPMENT	
B	03/22/08	100% OF REVIEW
A	03/16/08	PROCESSING PERMIT
NO.	DATE	DESCRIPTION
ISSUE LOG		
△	= COLOR CHANGE	

UNIVERSITY OF
SOUTHERN MAINE
70 FALMOUTH STREET
PORTLAND, MAINE

RESEARCH WING
PHASE III FIT-OUT

SECOND FLOOR
LIGHTING PLAN

SCALE	1/8" = 1'-0"
DRAWN BY	SAI
CHECKED BY	PROJ. MGR./ ENGR. SD
PROJ. MGR.	RCH
JOB NO.	03048110
SYMES MAINI & MCKEE ASSOCIATES, INC. 2004	

E2.02

