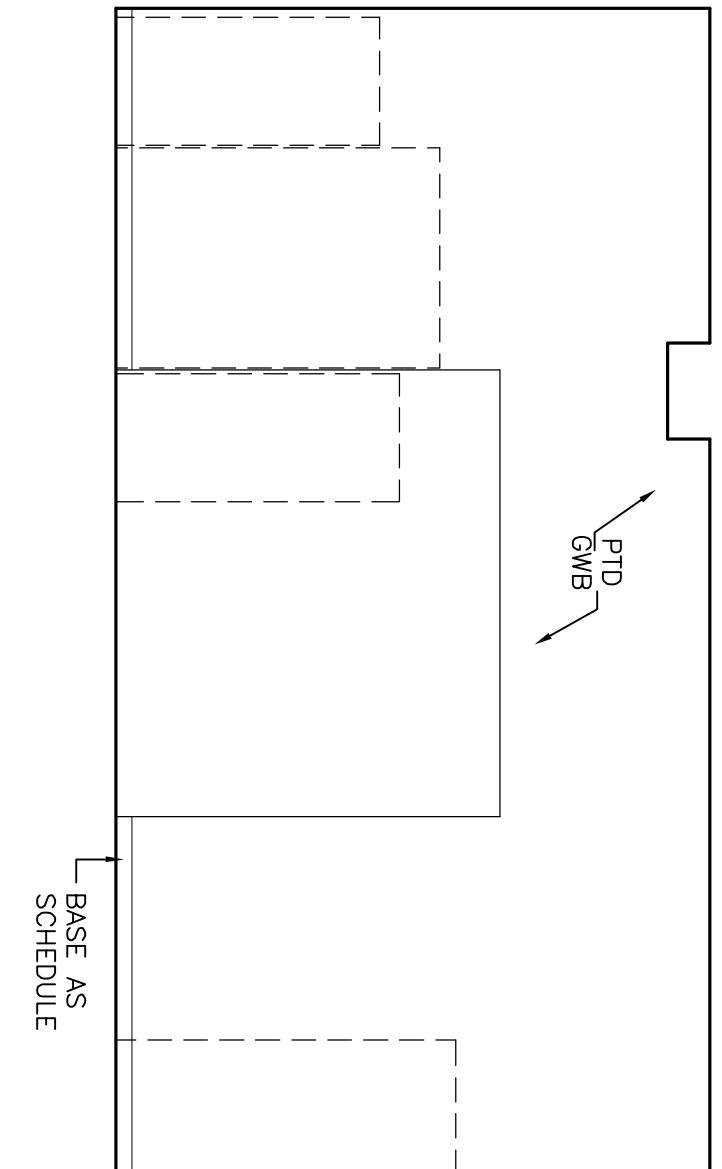
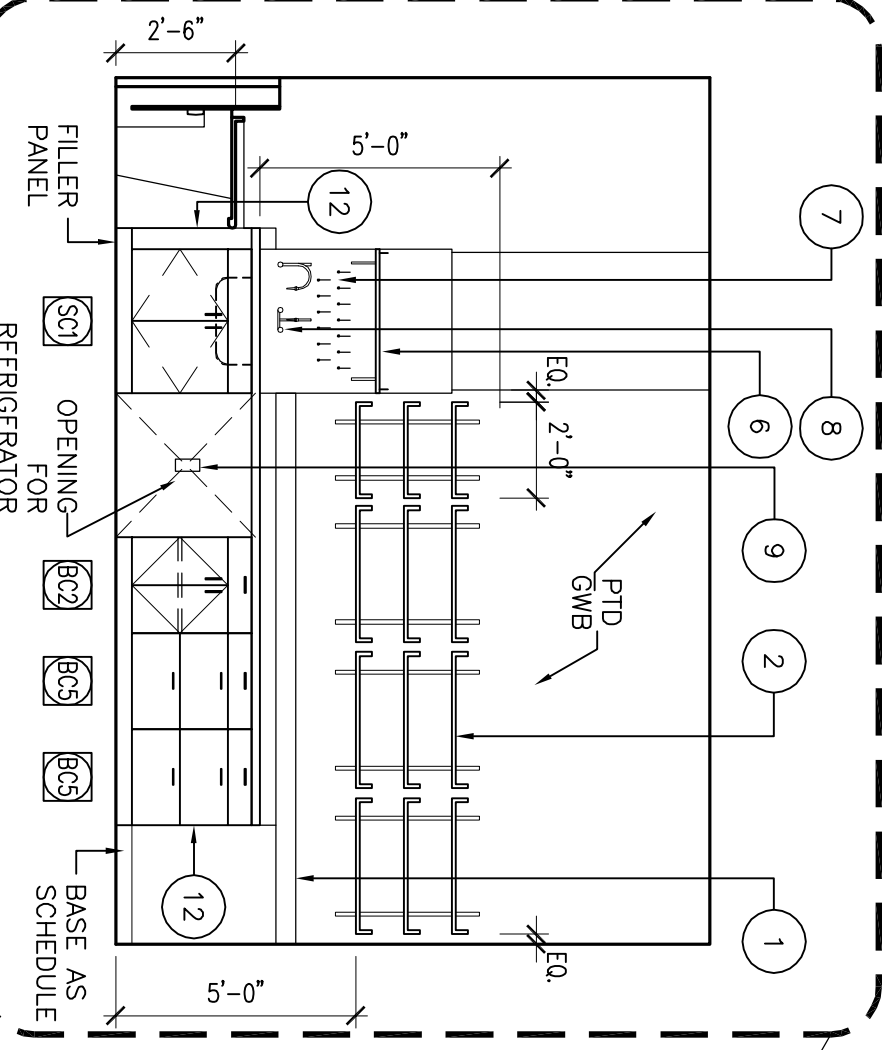


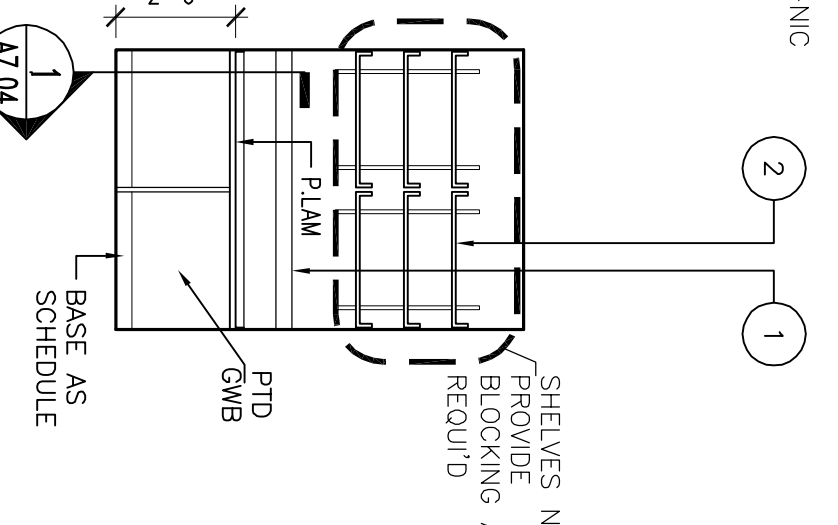
6 LAB 481 - NORTH ELEVATION  
A7.01 SCALE: 1/4" = 1'-0"



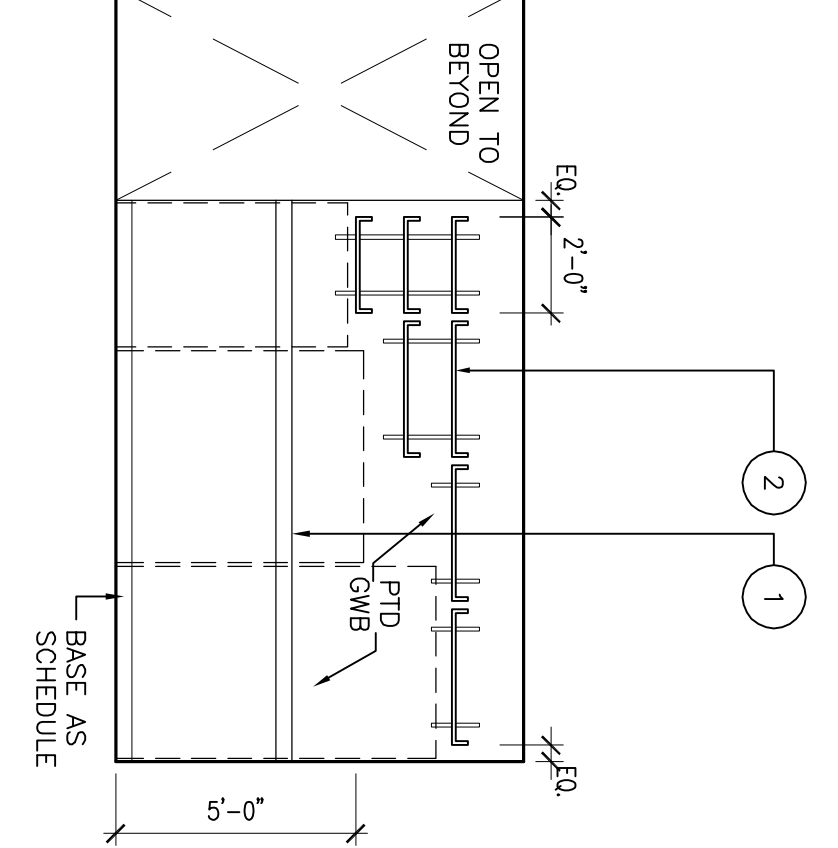
5 TISSUE CULTURE PREP 482B - EAST ELEVATION  
A7.01 SCALE: 1/4" = 1'-0"



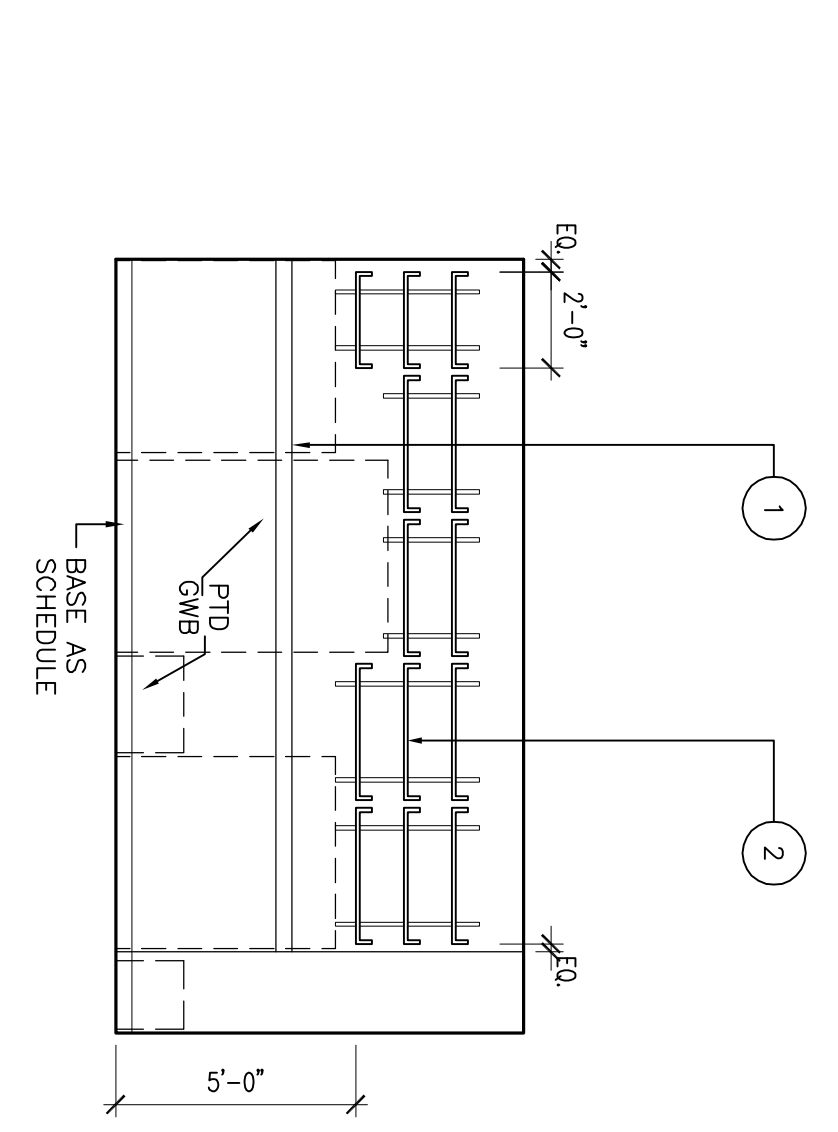
4 GENOMIC INSTABILITY 496 - EAST ELEVATION  
A7.01 SCALE: 1/4" = 1'-0"



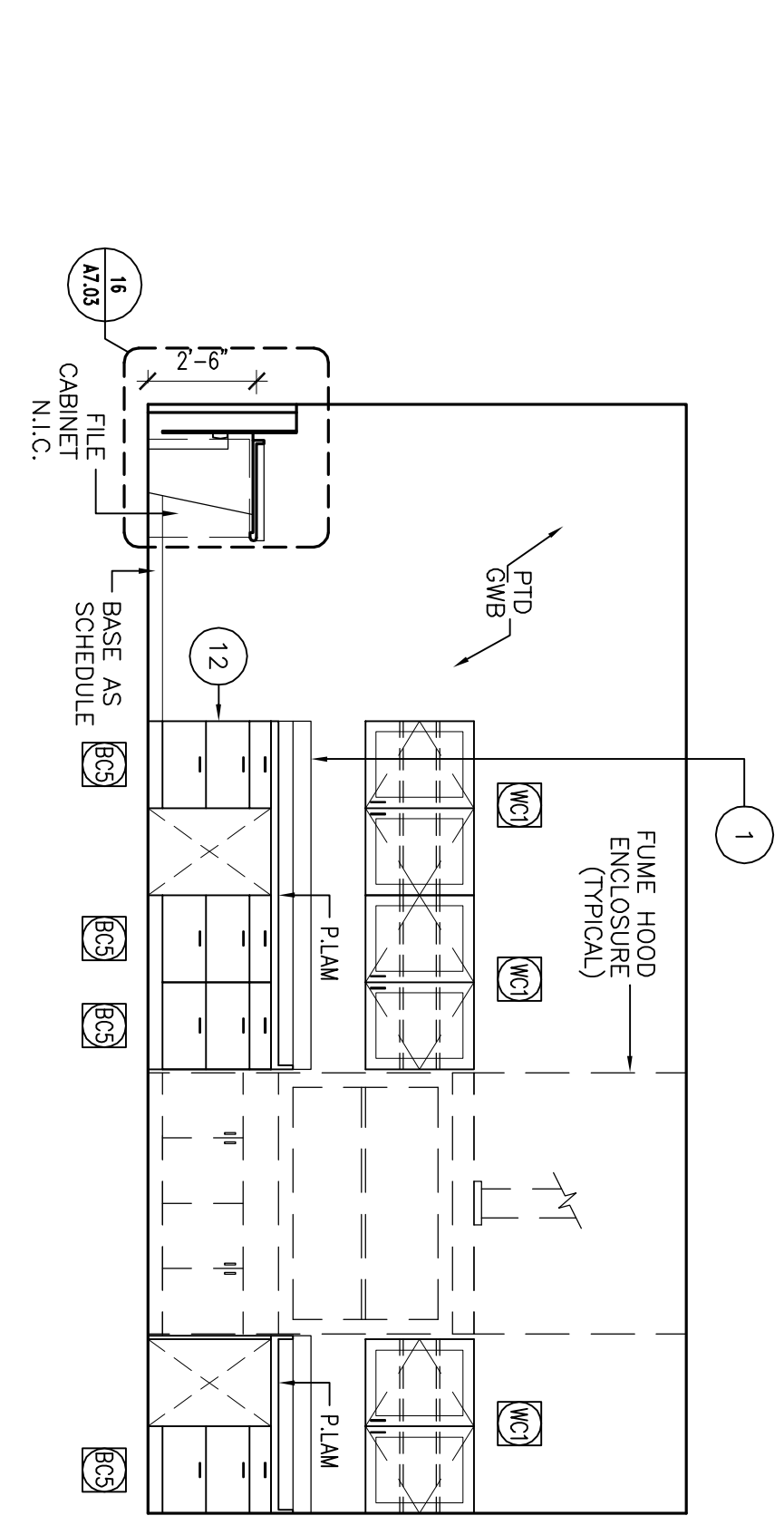
3 MICRO-ARRAY PREP 493A  
A7.01 SCALE: 1/4" = 1'-0"



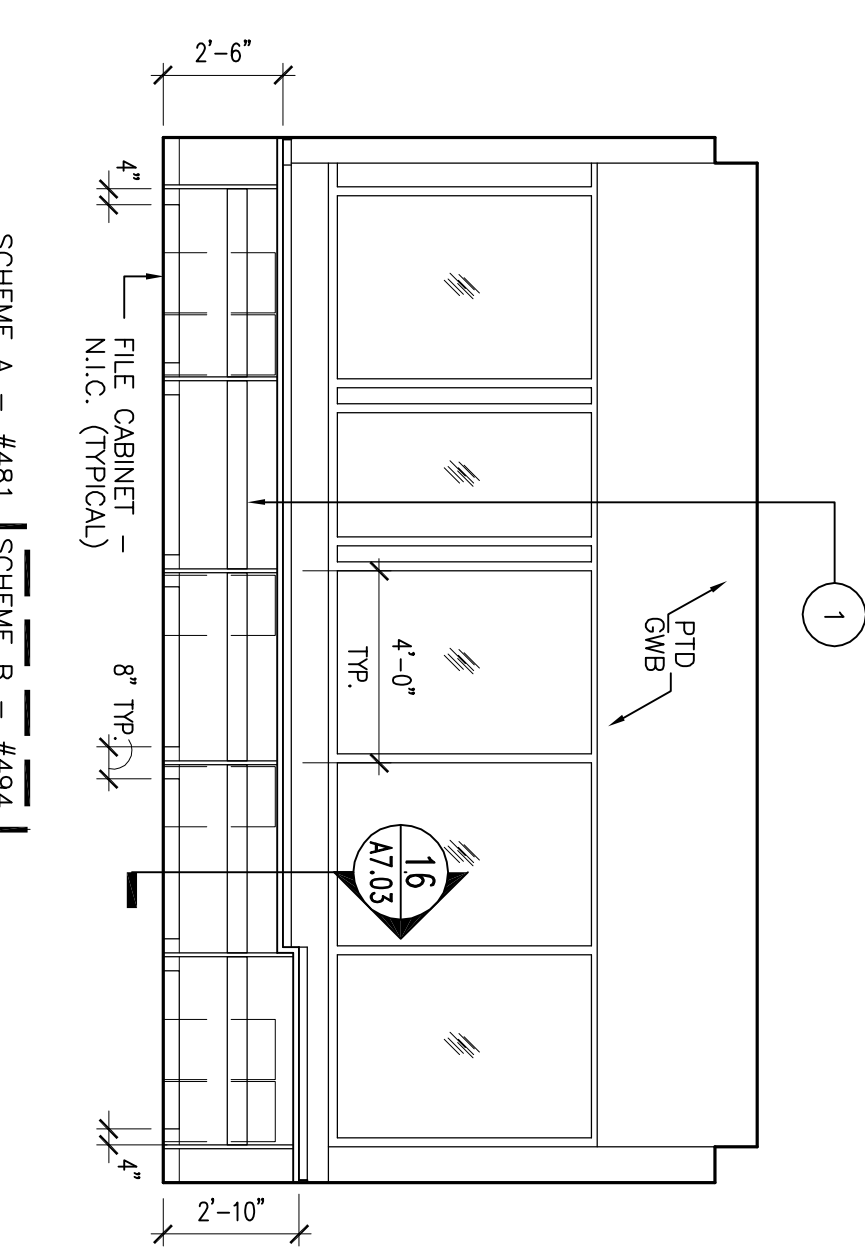
2 MICROSCOPY LAB 489 - WEST ELEVATION  
A7.01 SCALE: 1/4" = 1'-0"



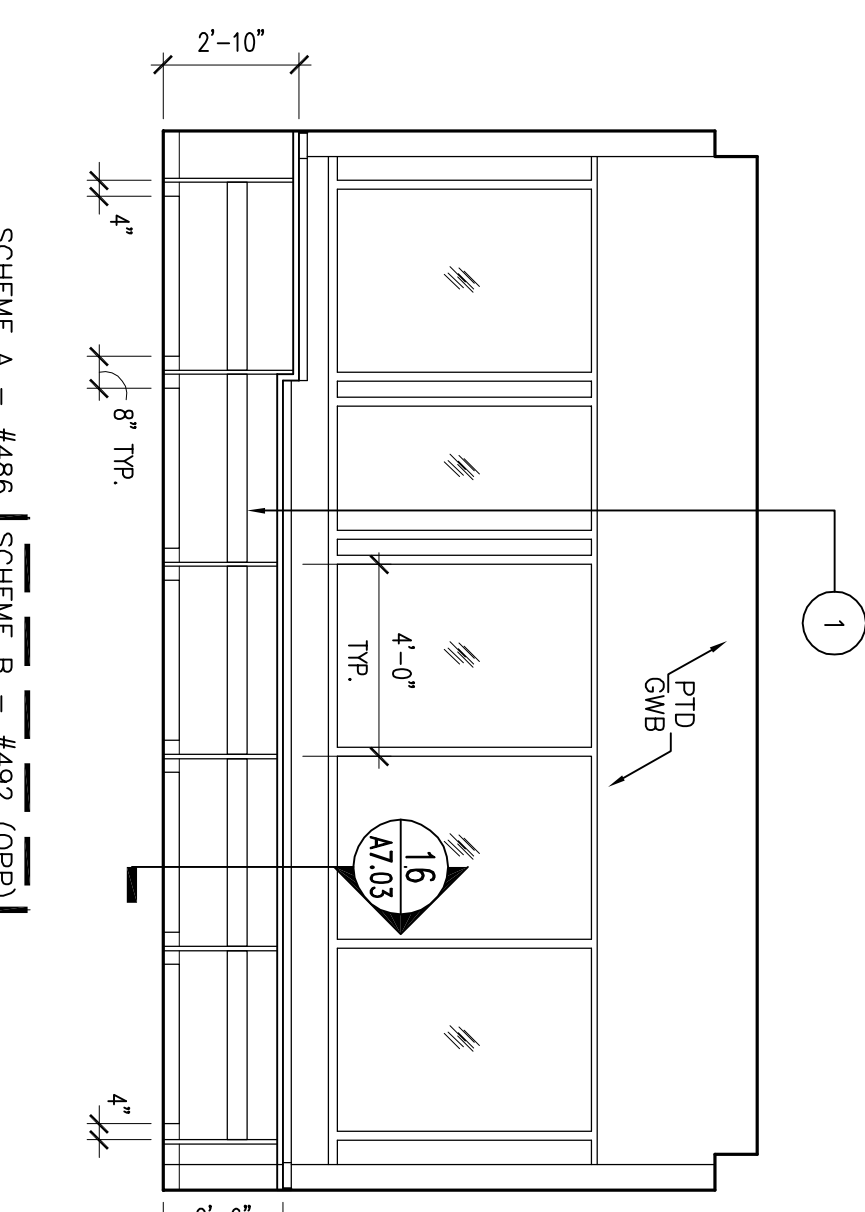
1 MICROSCOPY LAB 489 - NORTH ELEVATION  
A7.01 SCALE: 1/4" = 1'-0"



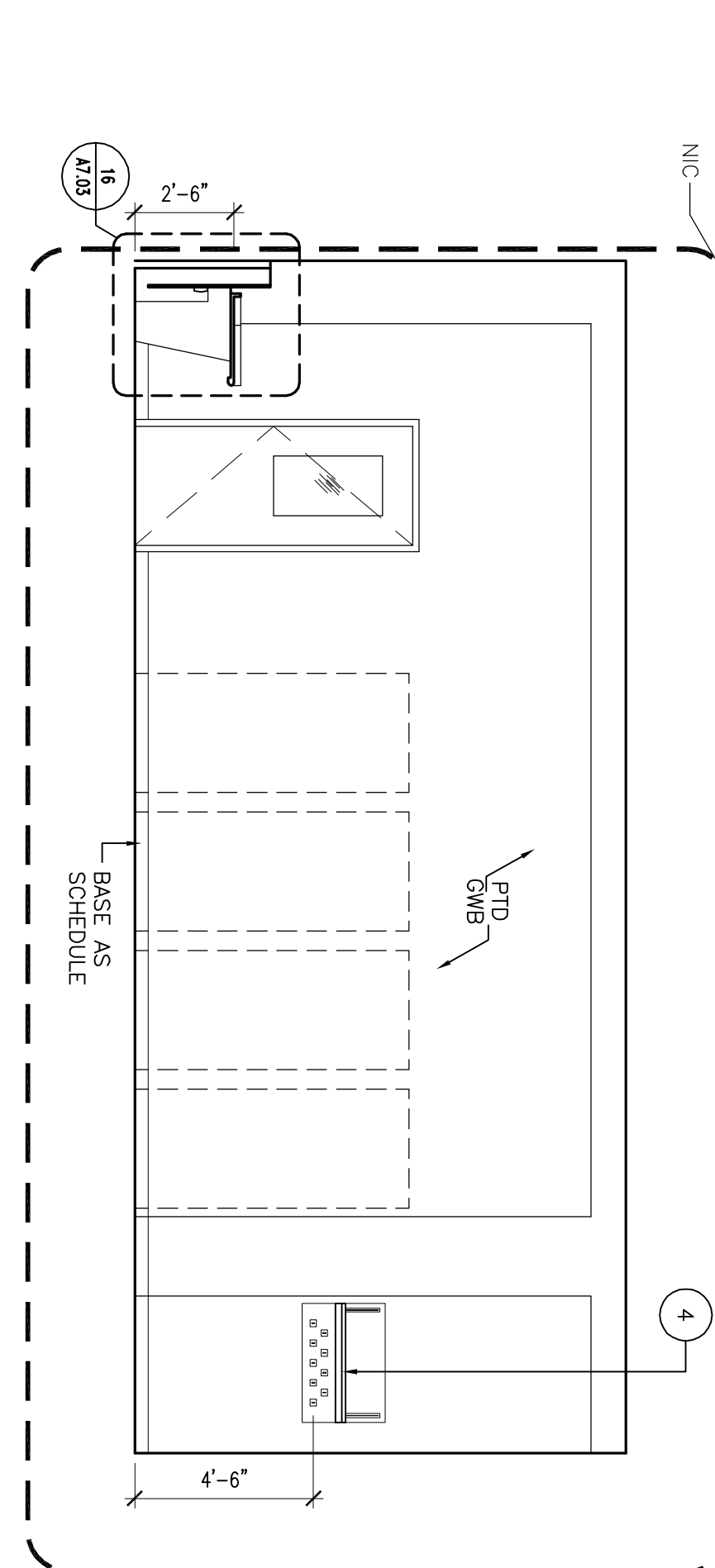
10 LAB 481 - SOUTH ELEVATION  
A7.01 SCALE: 1/4" = 1'-0"



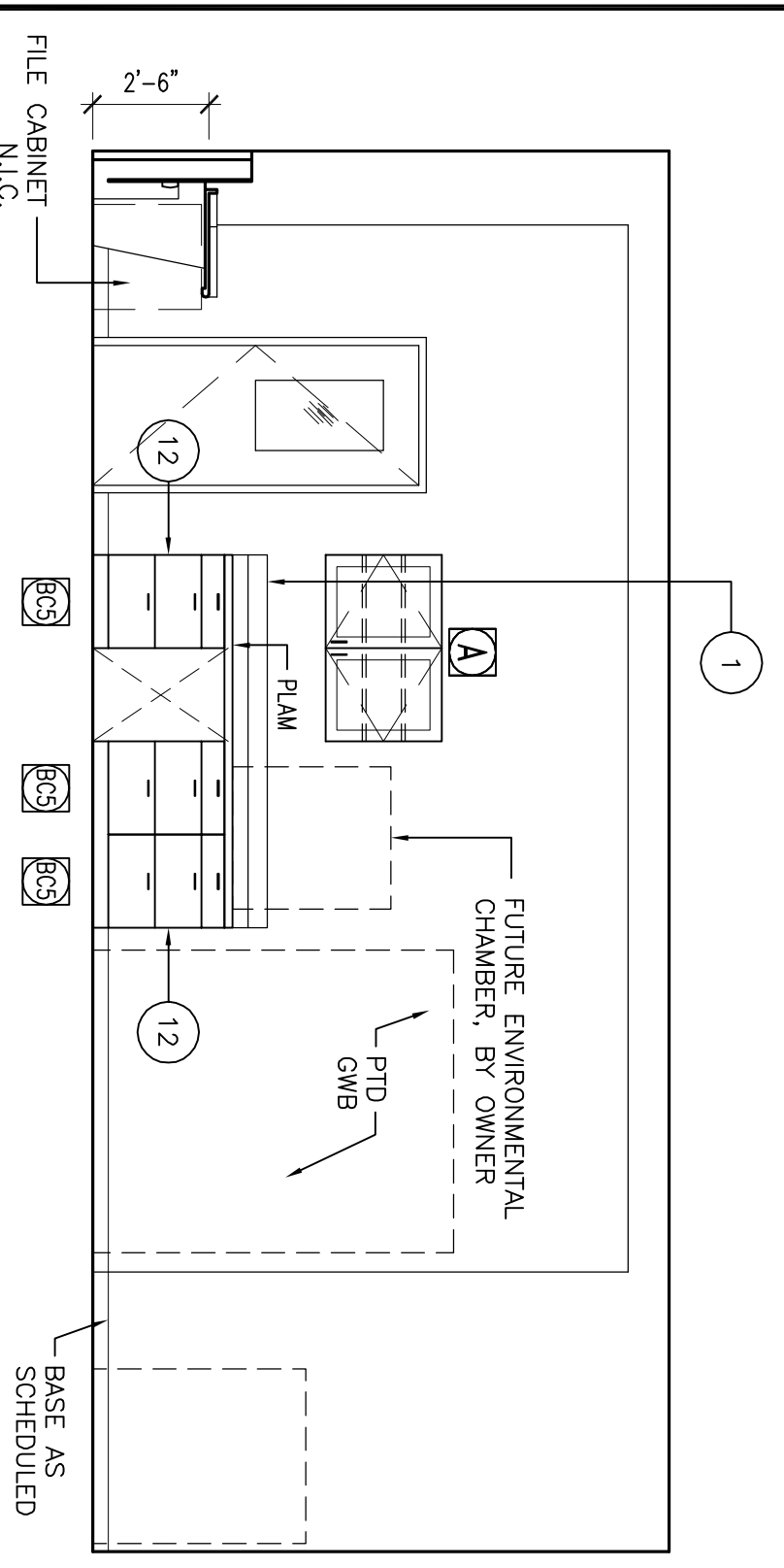
9 LAB - EAST ELEVATION  
A7.01 SCALE: 1/4" = 1'-0"



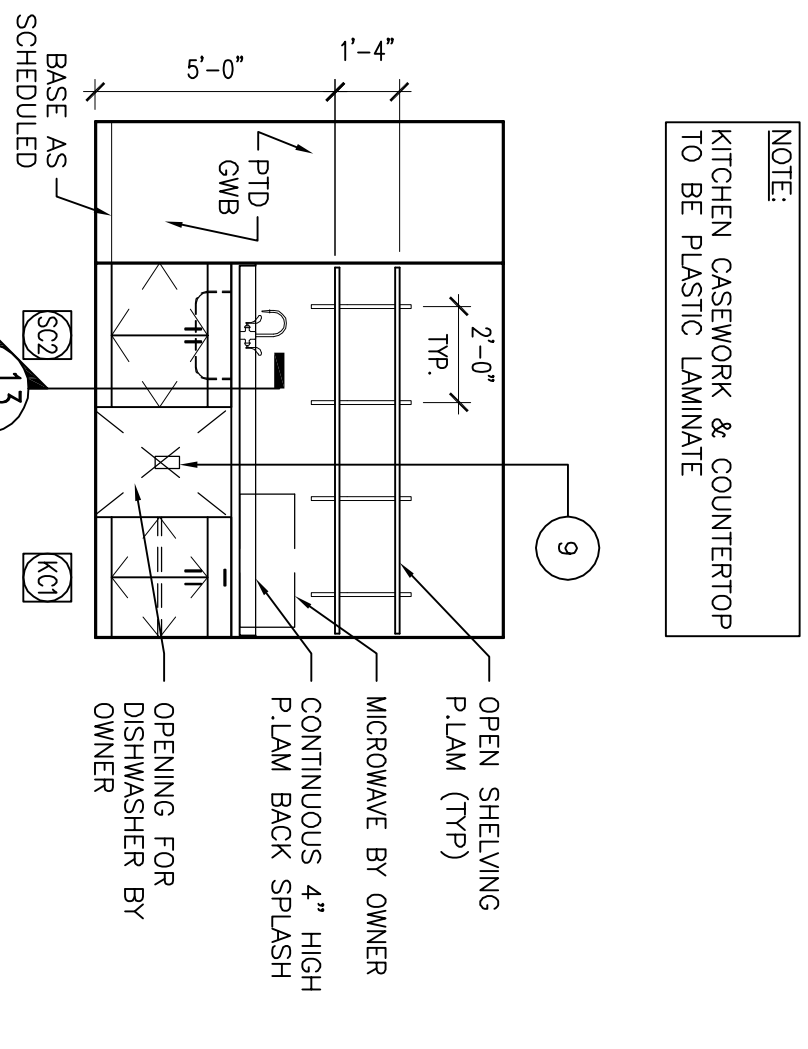
8 LAB - EAST ELEVATION  
A7.01 SCALE: 1/4" = 1'-0"



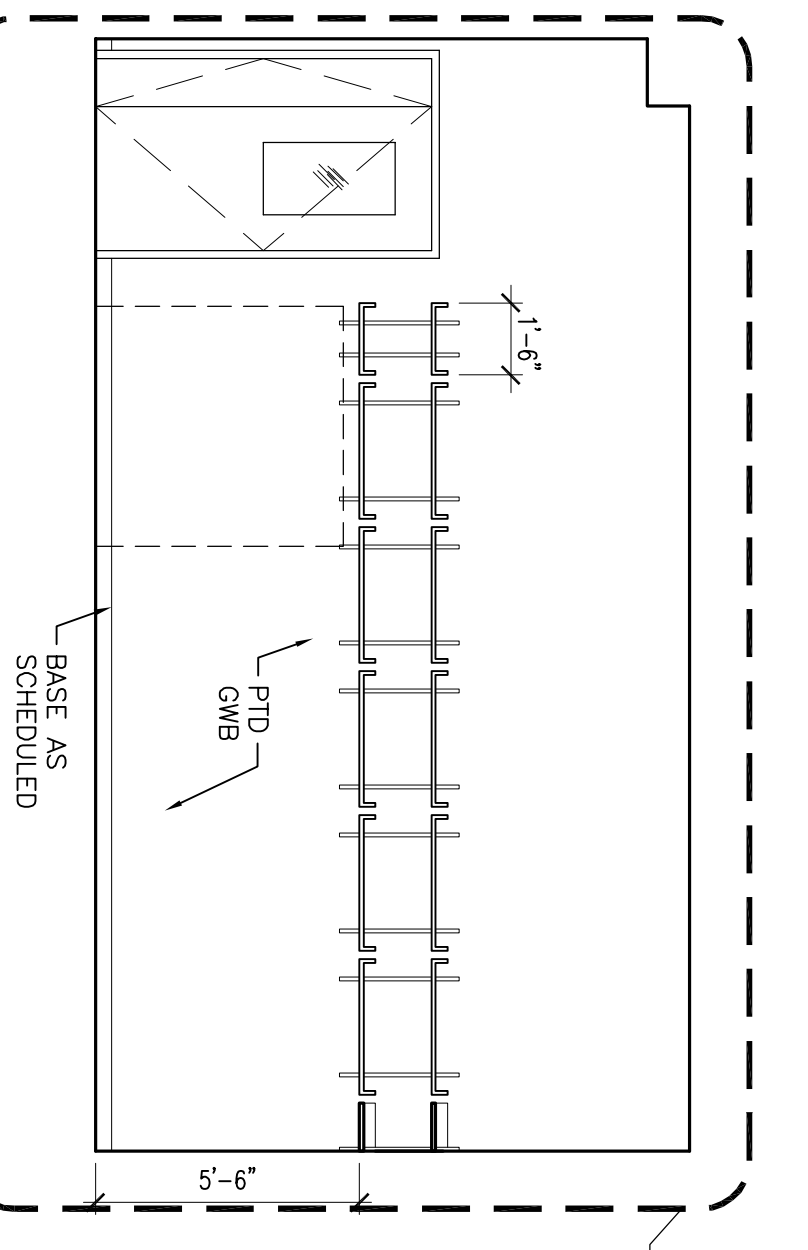
7 LAB 494 - SOUTH ELEVATION  
A7.01 SCALE: 1/4" = 1'-0"



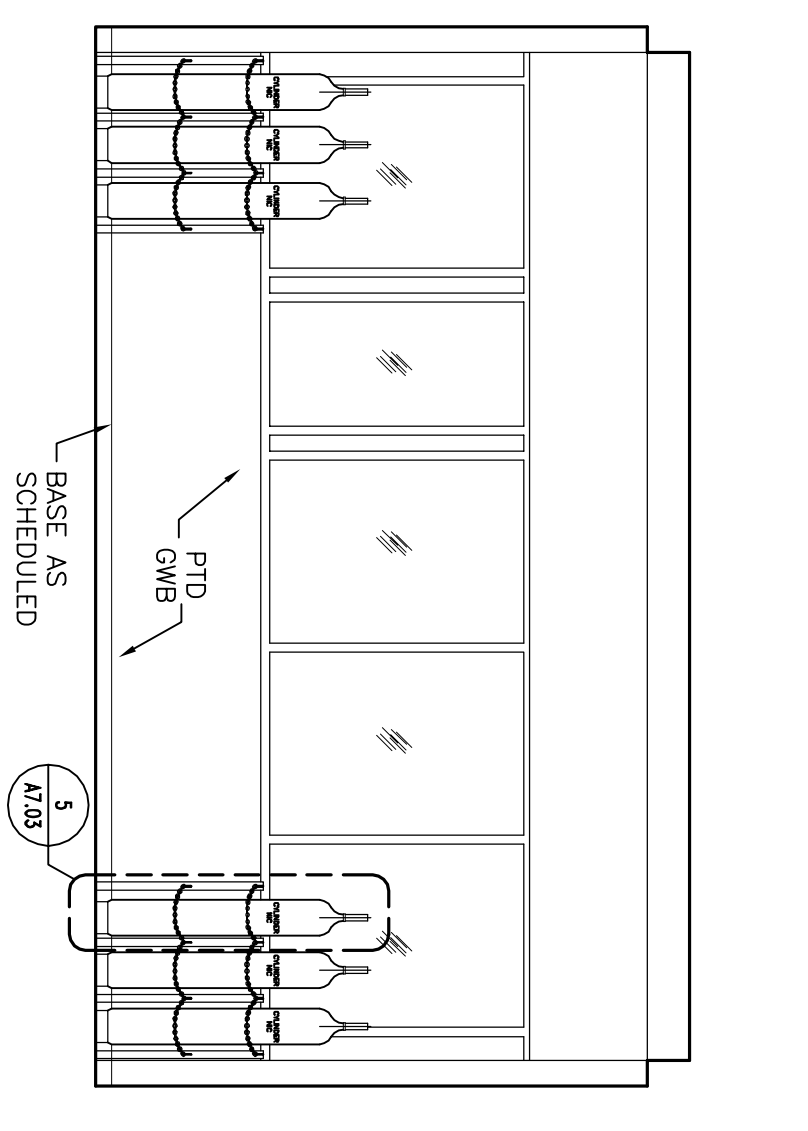
15 LAB 486 - SOUTH ELEVATION  
A7.01 SCALE: 1/4" = 1'-0"



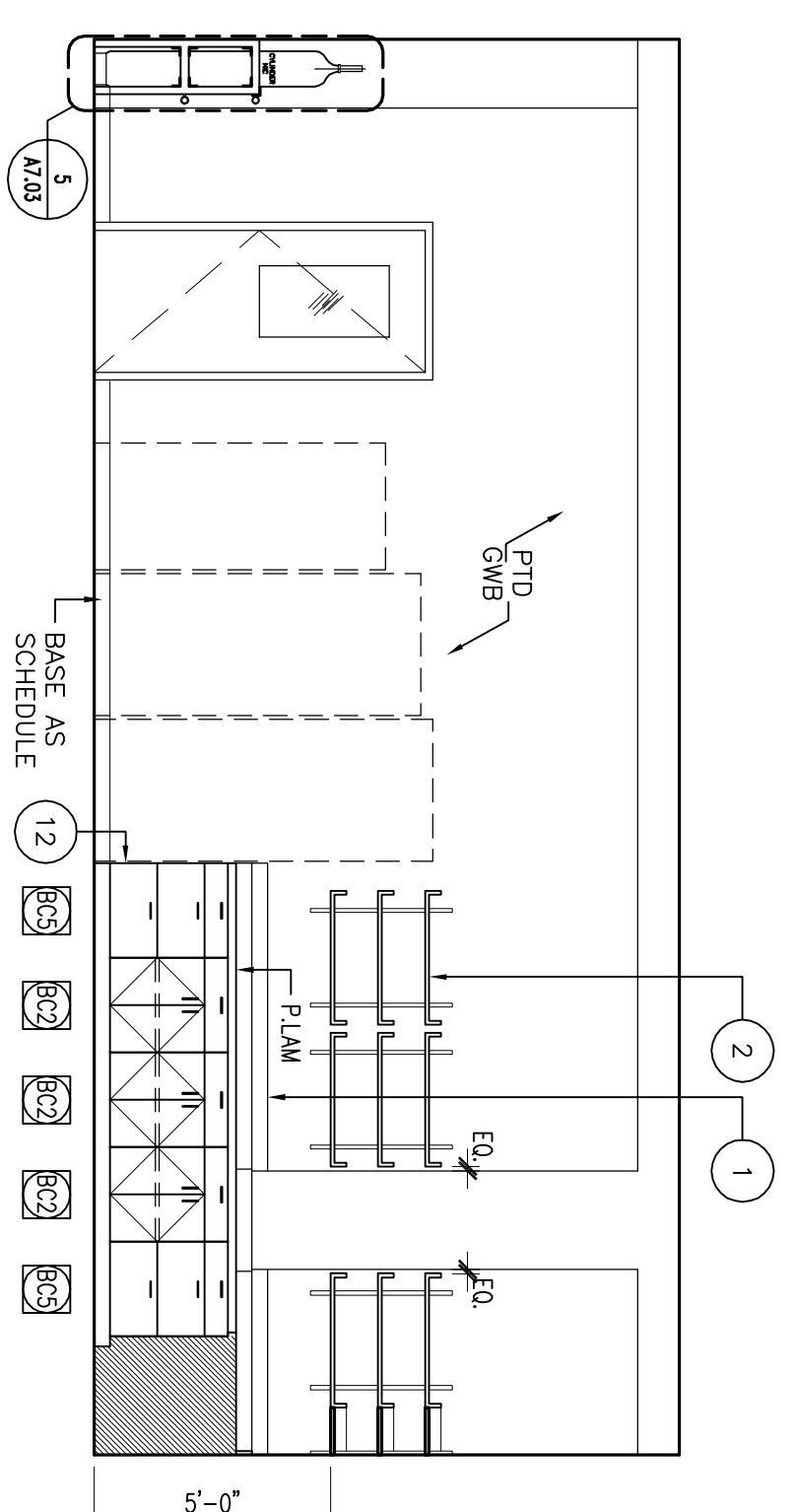
14 KITCHEN 479 - NORTH ELEVATION  
A7.01 SCALE: 1/4" = 1'-0"



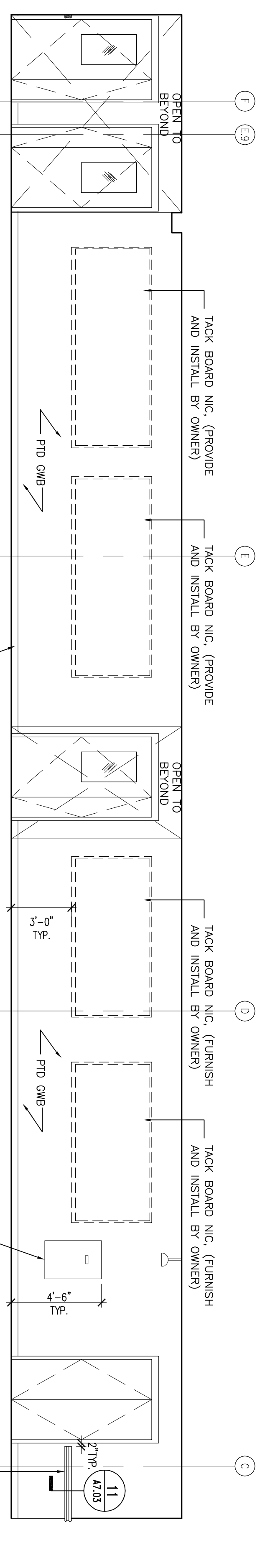
13 LAB 484 - WEST ELEVATION  
A7.01 SCALE: 1/4" = 1'-0"



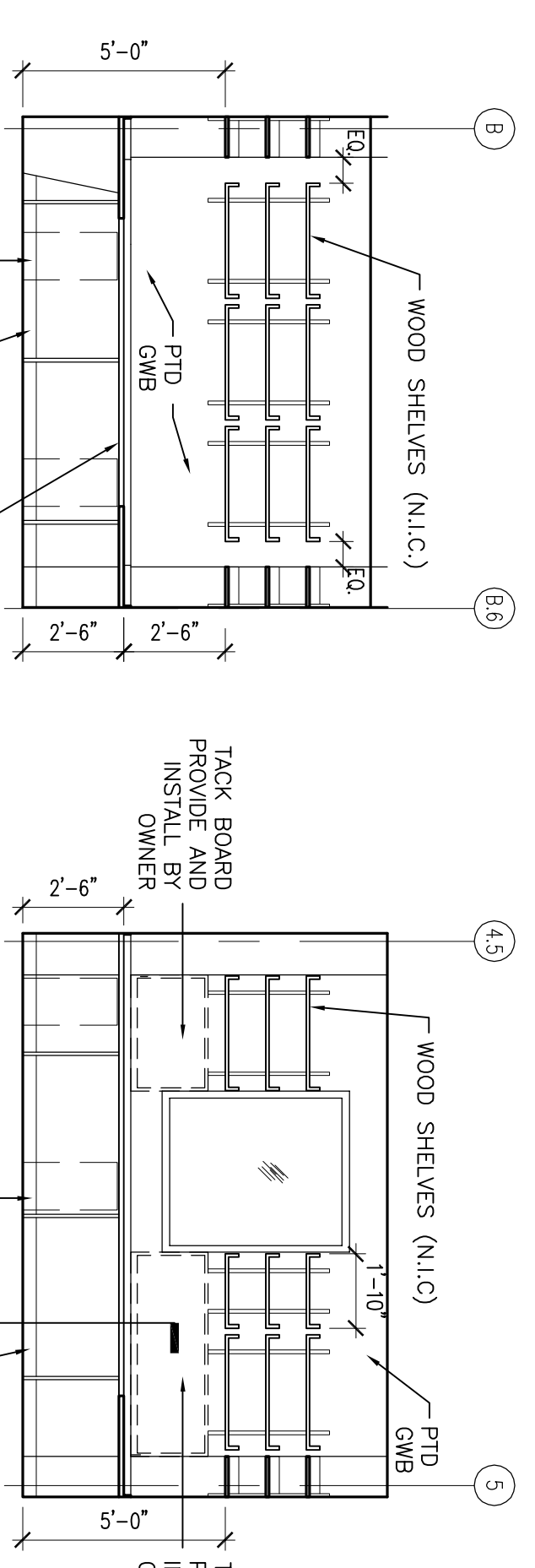
12 TISSUE CULTURE LAB 482A - EAST ELEVATION  
A7.01 SCALE: 1/4" = 1'-0"



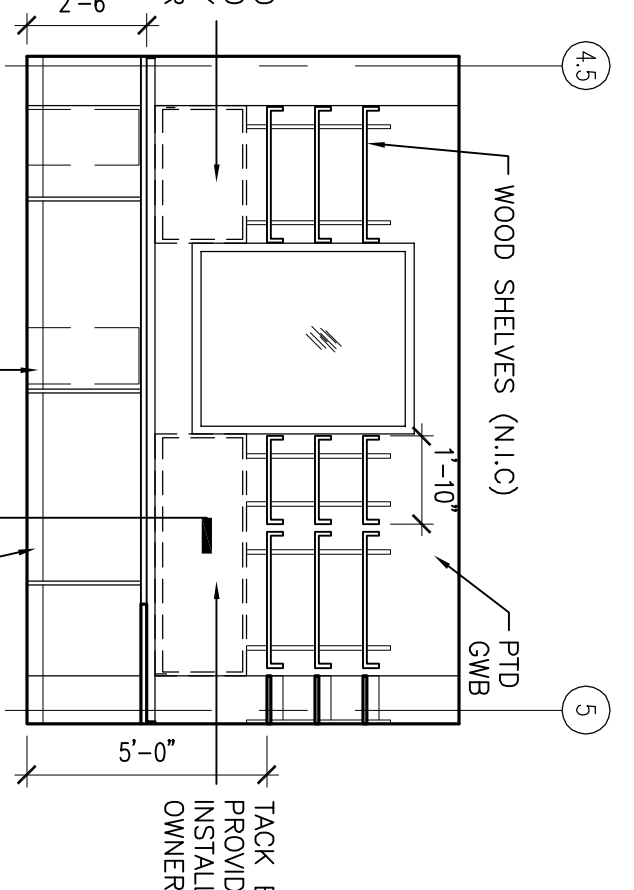
11 LAB 482A - SOUTH ELEVATION  
A7.01 SCALE: 1/4" = 1'-0"



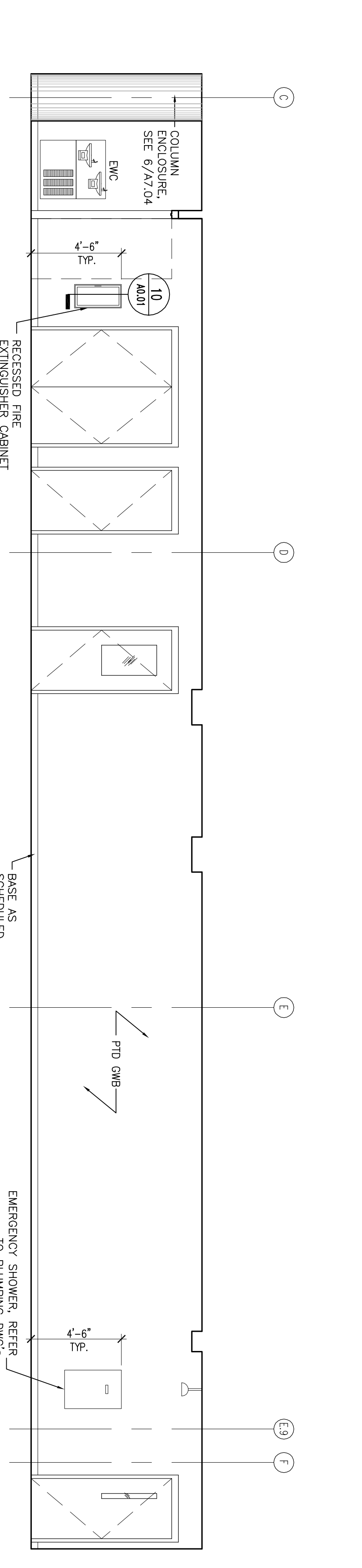
18 CORRIDOR 489A - EAST ELEVATION  
A7.01 SCALE: 1/4" = 1'-0"



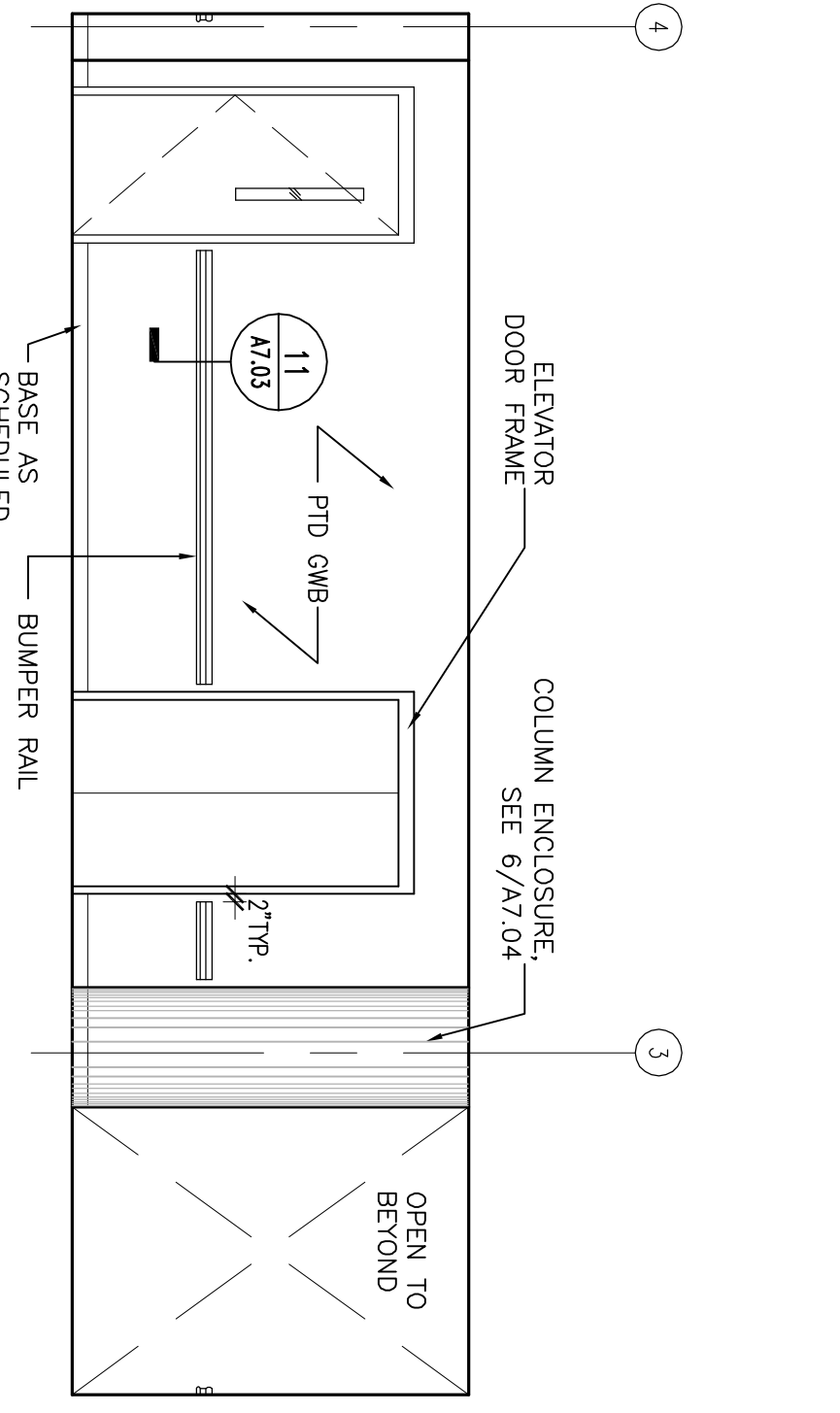
17 DOCTORAL STUDENTS 477 - WEST ELEV.  
A7.01 SCALE: 1/4" = 1'-0"



16 DOCTORAL STUDENTS 477 - SOUTH ELEV.  
A7.01 SCALE: 1/4" = 1'-0"



20 CORRIDOR 489A - WEST ELEVATION  
A7.01 SCALE: 1/4" = 1'-0"



19 RECEPTION 470 - NORTH ELEVATION  
A7.01 SCALE: 1/4" = 1'-0"

NOTE:  
KITCHEN CASEWORK & COUNTERTOP  
TO BE PLASTIC LAMINATE

**INTERIOR ELEVATION GENERAL NOTES**  
SEE DETAIL 6/6/203 FOR LABORATORY AND KITCHEN CABINETS SCHEDULES.

**INTERIOR ELEVATION KEY NOTES**  
1. PLUG WOOD SURFACE RESIN W/OUT AT 3'-4" TO BOTTOM OF PLUMBING (LOLN). REFER TO ELEC. DWG'S (REFER DETAIL 6/7/203)

2. PLUM SHELF ON WALL MOUNTED METAL SUPPORT 5'-4" WIDE X 12" DEEP

3. ADJUSTABLE WOOD SHELVING 3/4" WIDE X 12" DEEP (REFER DETAIL 6/7/203)

4. RELOCATE DESIGNATED CASEWORK / EQUIPMENT FROM FRESH FLOOR TO THIS LOCATION. PROVIDE NECESSARY SERVICE FOR INSTALLATION.

5. NOT USED

6. 3'-0" WIDE X 1'-0" DEEP EPOXY SHELF ON STAINLESS STEEL SUPPORTS, ROUND FINISHED BEANT ALUMINUM W/EL (2 X 10 X 1/4") AT EACH END

7. 3'-0" WIDE X 4'-0" HEIGHT EPOXY PEGBOARD

8. PANEL MOUNTED HW & CW. REFER TO PLUMBING DWG'S

9. ELECTRICAL OUTLET, REFER TO ELECTRICAL DWG'S

10. NOT USED

11. NOT USED

12. EXPOSED END FINISH TO MATCH FRONT FACE OF CABINETRY

**RESEARCH WING  
PHASE III FIT-OUT**

UNIVERSITY OF  
SOUTHERN MAINE  
70 FALMOUTH STREET  
PORTLAND, MAINE

**INTERIOR  
ELEVATIONS**

SCALE: AS NOTED  
DRAWN BY: GAK  
CHECKED BY: PLOU, RCH / ENGR, LTD  
PROJ. NO.: 08048110  
JOB NO.: 08048110  
DESIGNED BY: SWANES MAINTENANCE & KEEFE ASSOCIATES, INC. 2014

OWNER REVIEW: \_\_\_\_\_ DATE: \_\_\_\_\_

06/21/06 ISSUED FOR CONSTRUCTION  
09/03/06 SCOPE REVISION  
03/22/06 100% CC REVIEW  
A 03/08/06 80% PROGRESS PRINT