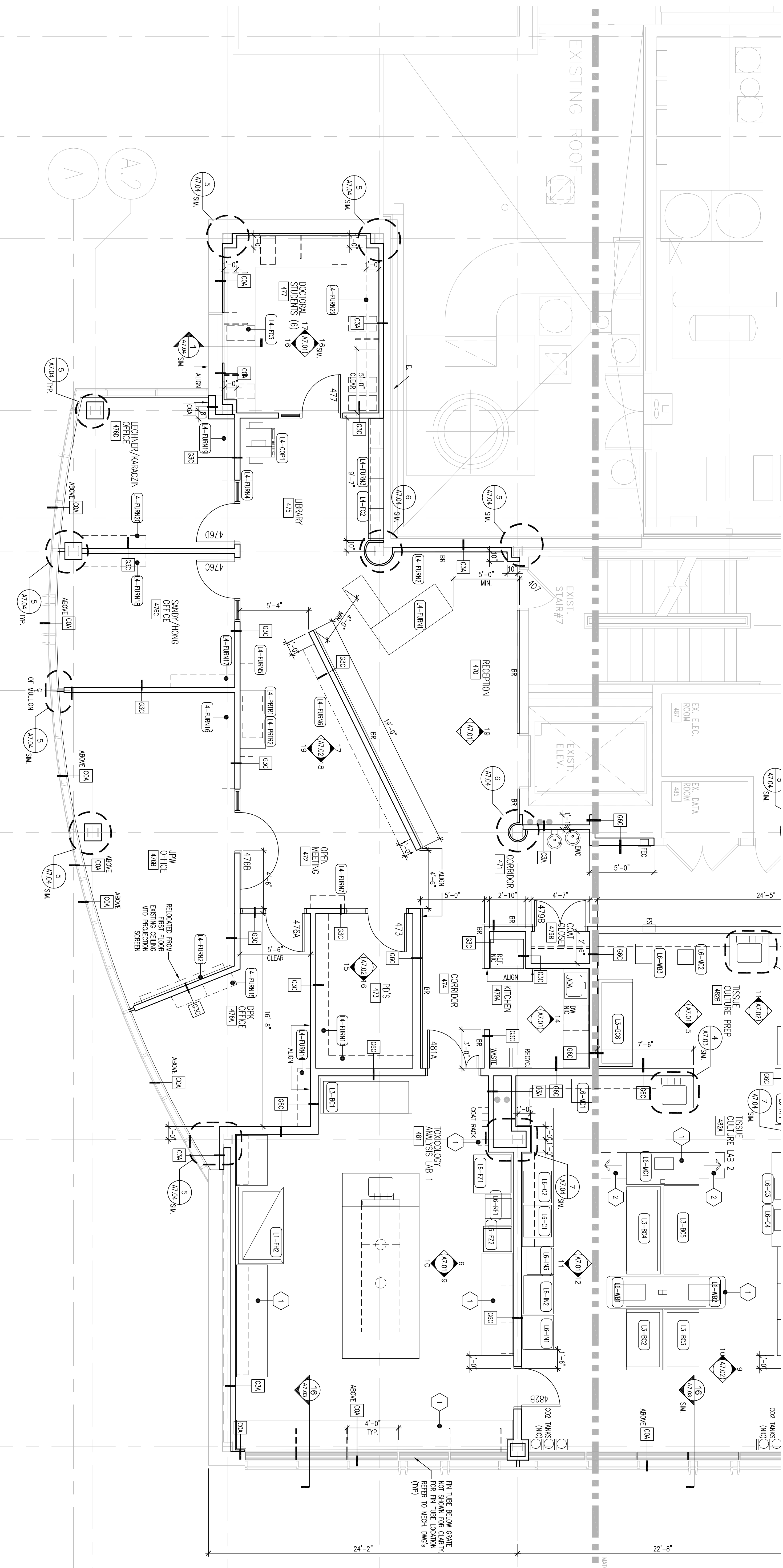


- 1 RELOCATE DESKTOP OS/WORKM / EQUIPMENT FROM FIRST FLOOR TO THIS FLOOR FOR INSULATION.
- 2 PROVIDE FALL OUT WORK SURFACE IN OS/WORKM AT 28' A.F.F.
- 3 RELOCATE DOOR FROM FIRST FLOOR TO THIS FLOOR. PROVIDE NECESSARY SERVICES FOR INSTALLATION. CONTRACTOR TO VERIFY SLAB PENETRATION.
- 4 TEMPORARY LOCATION OF RELOCATED ICE MACHINE (L3-M18). PROVIDE MEP SERVICES IN THIS LOCATION FOR OPERATION.
- 5 OS/WORKM (EXCEPT WHERE NOTED). EQUIPMENT AND FINISHES N.I.C. PROVIDE TO MECHANICAL, ELECTRICAL AND PLUMBING DIMS FOR EXTENT OF MEP WORK.
- 6 OS/WORKM, EQUIPMENT AND FINISHES N.I.C. PROVIDE WALL PARTITIONS AND DOORS ONLY. REFER TO MECHANICAL, ELECTRICAL AND PLUMBING DIMS FOR EXTENT OF MEP WORK.



OWNER REVIEW

NAME	DATE

ISSUE LOG

NO.	DATE	DESCRIPTION
A	03.16.06	80% PROGRESS PRINT
B	03.16.06	100% OC REVIEW
C	03.22.06	100% OC REVISION
D	05.03.06	SCOPE REVISION
E	06.21.06	ISSUED FOR CONSTRUCTION

UNIVERSITY OF SOUTHERN MAINE
70 FALMOUTH STREET
PORTLAND, MAINE

RESEARCH WING
PHASE III FIT-OUT

FOURTH FLOOR
PLAN- PART B

SCALE: 1/4" = 1'-0"
DRAWN BY: ZATTIGAK
CHECKED BY: PROJ. MGR./ ENGR. LTD.
PROJ. MGR.: RCH
JOB NO.: 000493.10
© SWAMES, DANIA & WHEELER ASSOCIATES, INC. 2005

PROJECT NORTH

A1.04b

