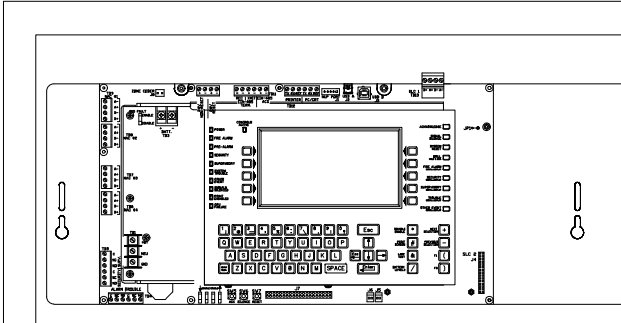


1 - Reviewed, No Exception Taken
 2 - Reviewed, Revise as Noted
 3 - Revise and Resubmit
 4 - Rejected

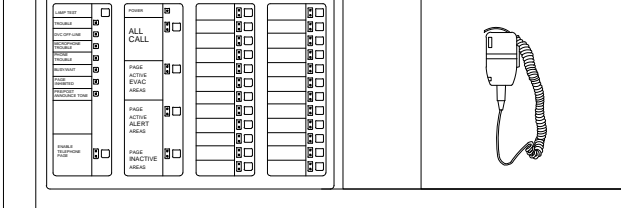
1 - Other: Held for Record, Not Reviewed

This review is only for general conformance with the design concept and the information given in the Contract Documents. Corrections or comments made on the other drawings do not affect the review of this drawing. The Contractor shall be responsible for the coordination and completion of the design. The Contractor is responsible for the coordination and completion of the design. The Contractor is responsible for the coordination and completion of the design. The Contractor is responsible for the coordination and completion of the design.

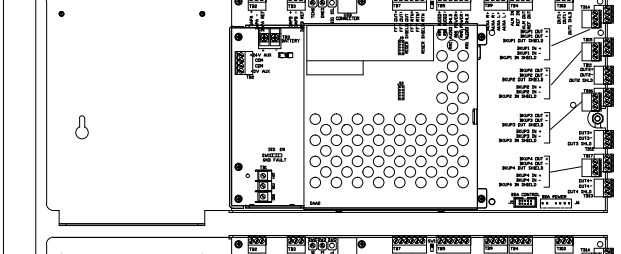
REVIEWER: **Stephanie J. Laplant, P.E.** DATE: 07.03.15



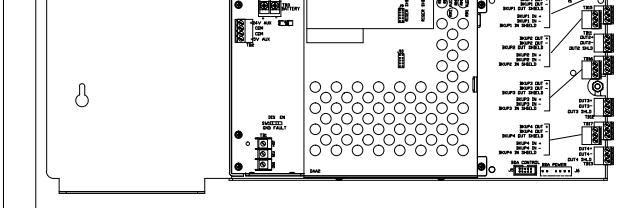
NFS2-640 FACP
W/NCA-2 DISPLAY



DVC-KD DIGITAL VOICE COMMAND
W/CMIC-1 MICROPHONE



DAA-75 DIGITAL AUDIO AMPLIFIER



DAA-75 DIGITAL AUDIO AMPLIFIER

FIRE ALARM CONTROL PANEL DETAIL

FIRE ALARM LEGEND

- FACP** INTELLIGENT ADDRESSABLE FIRE ALARM CONTROL PANEL (NOTIFIER #NFS2-640)
- BAT** BATTERY CABINET (NOTIFIER #NFS-LBBR)
- FSPS** FIRE CONTROL POWER SUPPLY WITH BATTERY BACKUP (NOTIFIER #HFFFB)
- RT** RADIO TRANSMITTER BOX (AES #7788F)
- EX** NETWORK COMMUNICATION MODULE (NOTIFIER #NION)
- EX** EXISTING DOCUMENT BOX
- EX** EXISTING KNOX BOX
- ADDRESSABLE DUAL ACTION MANUAL PULL STATION (NOTIFIER #NBG-12LX)
- ADDRESSABLE SMOKE DETECTOR (NOTIFIER #FSP-851 WITH #B210LP BASE)
- ADDRESSABLE DUCT SMOKE DETECTOR (NOTIFIER #DNR WITH FST-851R AND #ST-3 SAMPLING TUBE)
- ADDRESSABLE 135' F.T. HEAT DETECTOR (NOTIFIER #FST-851 WITH #B210LP BASE)
- ADDRESSABLE MONITOR MODULE (NOTIFIER #FM-1)
- ADDRESSABLE MINI MONITOR MODULE (NOTIFIER #FM-101)
- ADDRESSABLE RELAY MODULE (NOTIFIER #FRM-1)
- RT** REMOTE TEST STATION (NOTIFIER #RTS151)
- 24VDC SYNC. MULT-CANDELA SPEAKER/STROBE (NOTIFIER #SPSW)
- CEILING 24VDC SYNC. MULT-CANDELA SPEAKER/STROBE (NOTIFIER #SPSCW)
- 24VDC SYNCHRONIZED MULTI-CANDELA STROBE (NOTIFIER #SW)
- NOTE: SET CANDELA RATING OF ALL SPEAKER/STROBES AS SHOWN ON SYSTEM DESIGN DRAWINGS.
- 24VDC WALL MOUNT MAGNETIC DOOR HOLDERS (NOTIFIER #FM-998)
- SPRINKLER SYSTEM WATER FLOW SWITCH
- SPRINKLER SYSTEM TAMPER SWITCH
- SPRINKLER SYSTEM PRESSURE SWITCH
- END-OF-LINE-RESISTOR
- TICKS DENOTES NUMBER OF #14 FPLR FIRE ALARM RATED CONDUCTORS
- *** DEVICE TO BE FURNISHED AND INSTALLED BY OTHERS BUT WIRED BY THE E.C.

NOTE: THE SPECIFIED FIRE ALARM SYSTEM AND PERIPHERAL DEVICES SHALL BE NOTIFIER AS FURNISHED BY:
BK SYSTEMS, INC.
 4 COTE AVENUE
 GOFFSTOWN, NH 03045
 TELEPHONE: 603-647-8775
 FAX: 603-647-4808
 EMAIL: NIKWEBSTER@BKSYSTEMSINC.COM

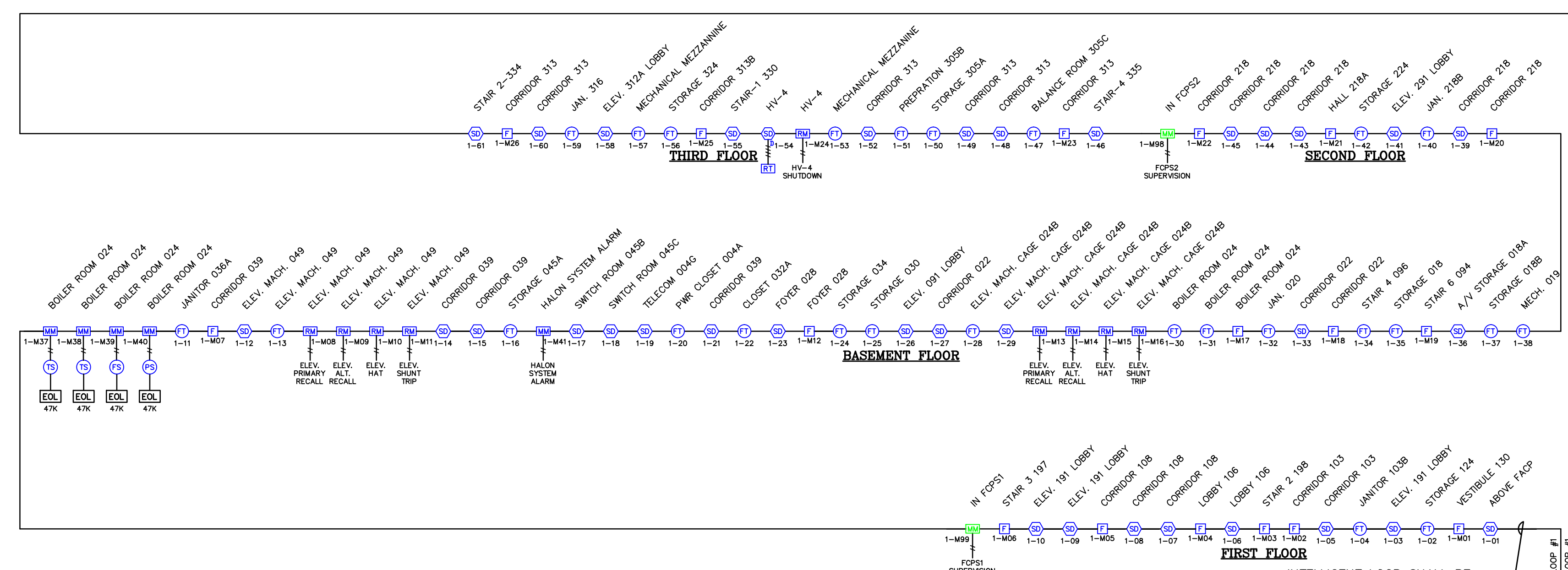
FIRE ALARM NOTES:

1. SPEAKER CIRCUITS ARE INDICATED ON RISER DIAGRAM AND SYSTEM DESIGN DRAWINGS BY SUBSCRIPT S-1,2,3, ETC.; PLEASE REFER TO RISER AND SYSTEM LAYOUT DRAWINGS FOR LOCATION OF DEVICES.
2. 24VDC STROBE CIRCUITS ARE INDICATED ON RISER DIAGRAM AND SYSTEM DESIGN DRAWINGS BY SUB-SCRIPT V-1, 2, 3, ETC.; PLEASE REFER TO RISER AND SYSTEM LAYOUT DRAWINGS FOR LOCATION OF DEVICES.
3. ALL SPEAKERS ARE TO BE SET FOR 25 VOLT OPERATION AND SPEAKER WATTAGES ARE AS SHOWN ON THE SYSTEM DESIGN DRAWINGS.
4. ALL SPEAKERS ARE TO BE MOUNTED IN A FOUR (4) INCH SQUARE x 2-1/8 INCH DEEP BACKBOX WITH NO EXTENSION RING REQUIRED. THE SHIELD SHOULD BE TWISTED TOGETHER AND TAPED SECURELY IN EACH BACK BOX IN ORDER TO AVOID SHORTS AND GROUNDS WITHIN THE SYSTEM SPEAKER CIRCUITS.
5. THE SIGNAL CIRCUITS ARE TO BE WIRED AND INSTALLED WITH NO DEVIATION TO THE FIRE ALARM SYSTEM RISER DIAGRAM AND LAYOUT DRAWINGS DUE TO CIRCUIT AMPERAGE RESTRICTIONS WITHOUT FIRST DISCUSSING WITH AND OBTAINING APPROVAL FROM BK SYSTEMS, INC. IF THE ELECTRICAL CONTRACTOR INSTALLS ANY OF THESE DEVICES IN LOCATIONS OTHER THAN AS SHOWN ON THE CONTRACT DOCUMENTS, THE ELECTRICAL CONTRACTOR WILL BE RESPONSIBLE FOR ALL COSTS ASSOCIATED WITH RELOCATING, PATCHING AND PAINTING WHERE DEVICES HAD BEEN IMPROPERLY INSTALLED.
6. THE LOCATIONS OF INTERIOR AND EXTERIOR AUDIO/VISUAL DEVICES SHOWN ON THE DRAWINGS HAVE BEEN LOCATED IN ACCORDANCE WITH NFPA 72. UNDER NO CIRCUMSTANCES SHALL THE ELECTRICAL CONTRACTOR CHANGE THE LOCATIONS OF ANY OF THESE DEVICES WITHOUT FIRST DISCUSSING WITH AND OBTAINING APPROVAL FROM BK SYSTEMS, INC. IF THE ELECTRICAL CONTRACTOR INSTALLS ANY OF THESE DEVICES IN LOCATIONS OTHER THAN AS SHOWN ON THE CONTRACT DOCUMENTS, THE ELECTRICAL CONTRACTOR WILL BE RESPONSIBLE FOR ALL COSTS ASSOCIATED WITH RELOCATING, PATCHING AND PAINTING WHERE DEVICES HAD BEEN IMPROPERLY INSTALLED.
7. THE END-OF-LINE DEVICES MUST BE LOCATED IN A COMMON AREA ONLY.
8. NO "T" TAPPING ALLOWED ON ANY CIRCUITS.
9. NO WIRING OR CONDUITS TO ENTER OR EXIT FROM TOP LEFT CORNER OF THE FIRE ALARM CONTROL PANEL DUE TO LOCATIONS OF POWER SUPPLIES. NO WIRING OR CONDUITS TO ENTER OR EXIT THROUGH THE BOTTOM OF THE FIRE ALARM CONTROL PANEL EXCEPT FOR BATTERY BOX CONNECTIONS. ALL CONDUITS THAT ENTER THE CONTROL PANEL SHALL BE NO LARGER THAN ONE (1) INCH.
10. ALL SMOKE AND HEAT DETECTORS SHALL BE LOCATED A MINIMUM OF 3'-0" AWAY FROM ALL SUPPLY AIR DIFFUSERS.

SYSTEM INPUTS

	A	B	C	D	E	F	G	H	I	J	K	L	M	N	O	P	Q	R	S	T	U	V	W	X	Y	Z
1																										
2																										
3																										
4																										
5																										
6																										
7																										
8																										
9																										
10																										
11																										
12																										
13																										
14																										
15																										
16																										
17																										
18																										
19																										
20																										
21																										
22																										
23																										
24																										
25																										
26																										
27																										
28																										
29																										
30																										
31																										
32																										
33																										
34																										
35																										
36																										
37																										
38																										
39																										
40																										
41																										
42																										

FIRE ALARM SEQUENCE OF OPERATION MATRIX



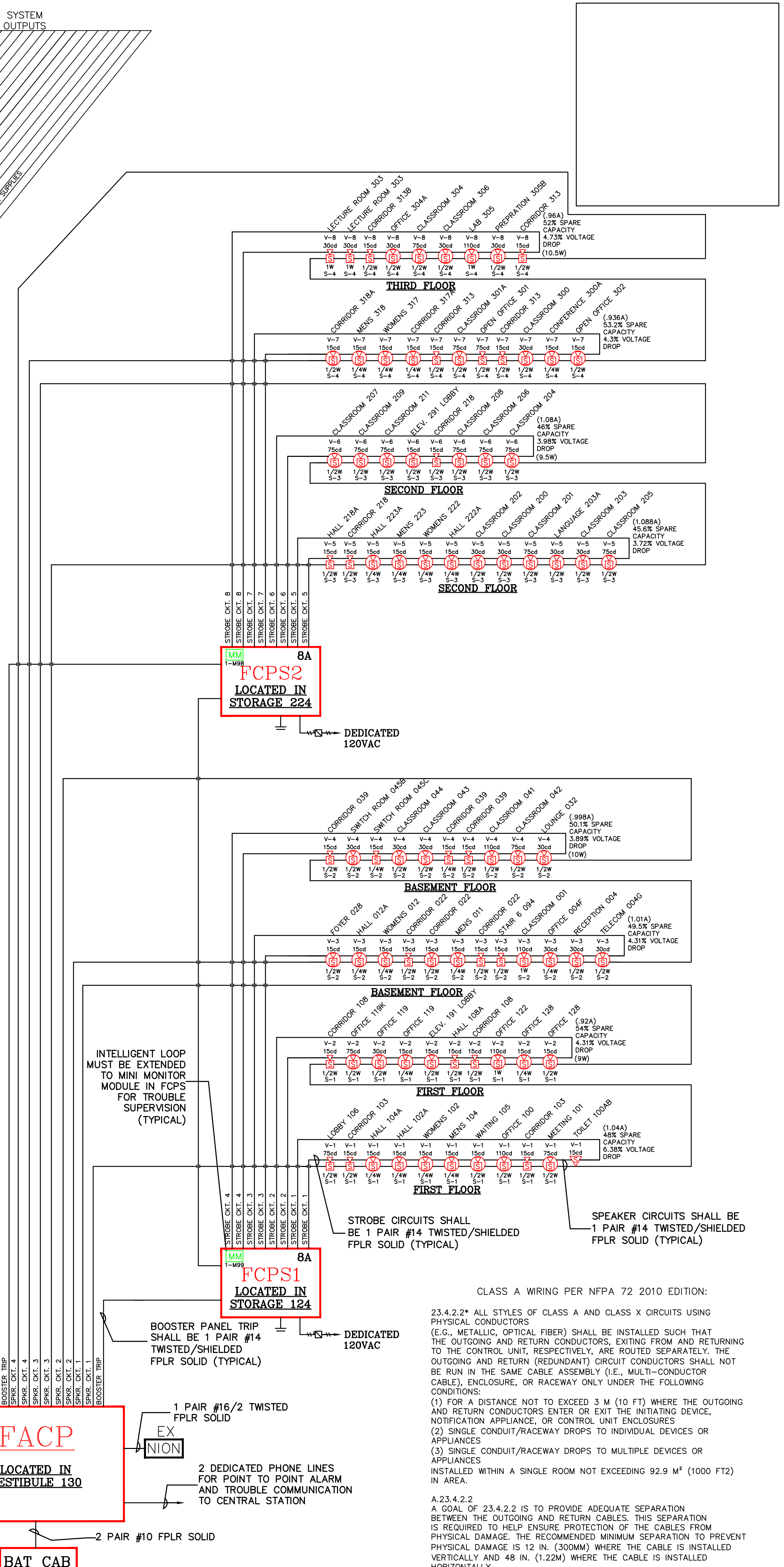
RADIO TRANSMITTER ZONE SCHEDULE

ZONE #	AREA
1.	ALARM CONDITION
2.	CITY DISCONNECT
3.	SPARE ALARM
4.	SPARE ALARM
5.	SPARE ALARM
6.	SPARE ALARM
7.	SPARE ALARM
8.	AES TAMPER SWITCH

ANTICIPATED AMBIENT SOUND LEVELS

BUSINESS OCCUPANCY	55DB
EDUCATIONAL OCCUPANCY	45DB
INSTITUTIONAL OCCUPANCY	50DB
MECHANICAL ROOMS	85DB
ASSEMBLY OCCUPANCY	55DB
RESIDENTIAL OCCUPANCY	35DB

FIRE ALARM SYSTEM RISER DIAGRAM



This drawing and the information and design application herein contained is the property of BK Systems, Inc.; all information herein contained shall be treated as proprietary and confidential; no reproduction of this drawing or part thereof shall be made without the written consent of BK Systems, Inc.

BK SYSTEMS
 "BUILDING SYSTEMS SPECIALISTS"
 BK SYSTEMS, INC.
 4 COTE AVENUE • GOFFSTOWN, NH 03045
 TEL: (603) 647-8775 / FAX: (603) 647-4806
 www.bksystemsinc.com

Project No.: 15-062
 Date: 06/26/13
 Scale: AS NOTED
 Drawn By: N. WEBSTER
 Checked By: R. HOUDIE
 Approved By: K. KLARDIE

REVISIONS	DATE
REV#1	07/01/13

USM - PAYSON SMITH HALL
 PORTLAND, MAINE

FIRE ALARM RISER DIAGRAM, NOTES, LEGEND

PREPARED FOR:
 TRT ELECTRIC
 65 WASHINGTON STREET
 AUGUSTA, ME 04330