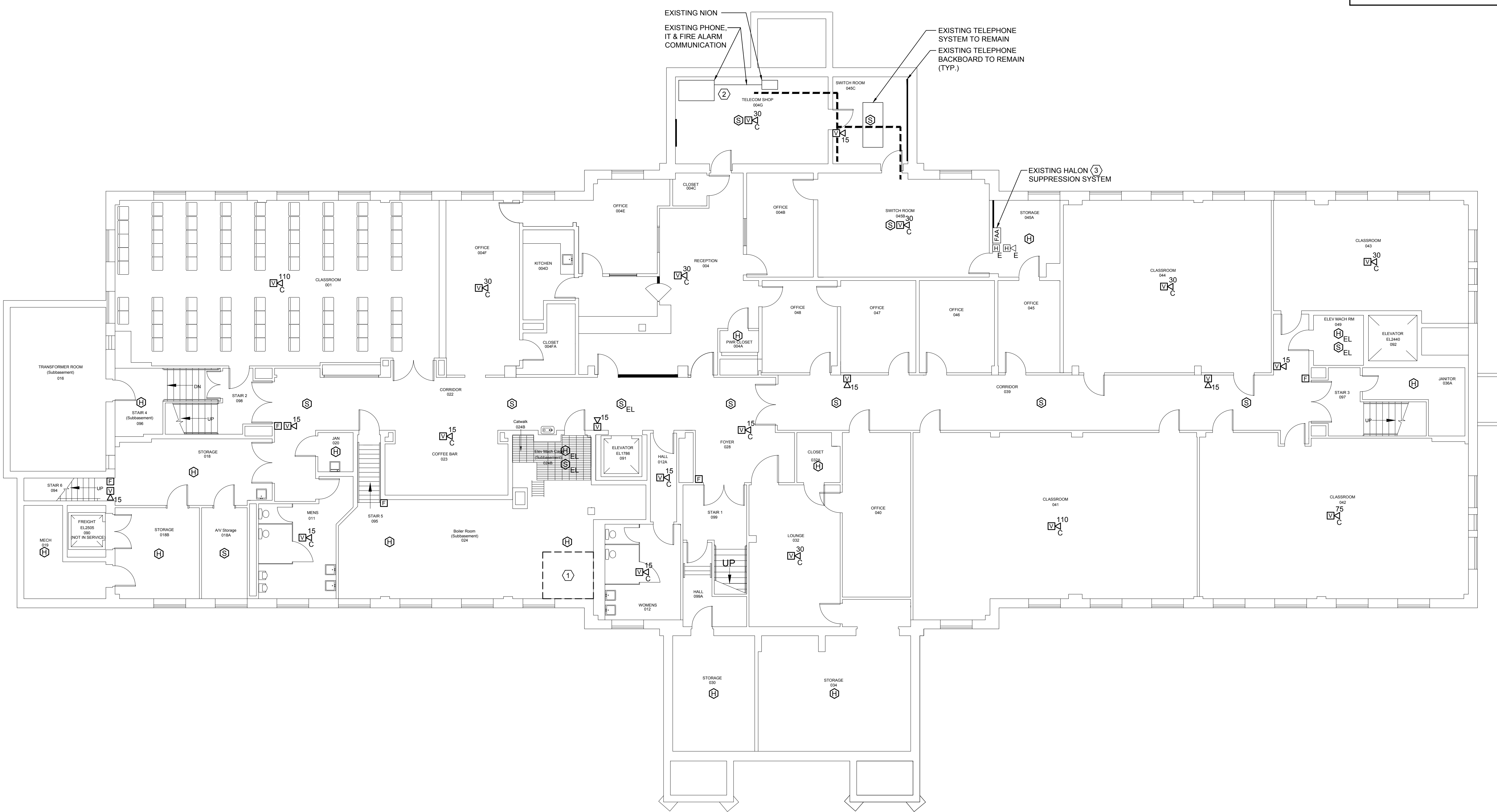


6/3/2013 9:57 AM I:\3801-3900\384210 USM FIRE ALARM SYSTEM UPGRADES\DESIGN\DWGS\BLDG\PAYSON SMITH FIRE ALARM UPGRADES\SHEETS\3842.12-FA100 BASEMENT FIRE ALARM PLAN.DWG KYLE MAHAR



- TECHNICAL NOTES:**
- ① MAINTAIN EXISTING FLOW AND TAMPER SWITCHES AND OTHER SPRINKLER DEVICE CONNECTIONS.
 - ② EXISTING FIRE ALARM COMMUNICATION DEVICES SHALL REMAIN. PORTLAND CAMPUS HUB FOR COMMUNICATION WITH EXISTING ONYXWORKS SYSTEM ON GORHAM CAMPUS IS HOUSED WITHIN THIS ROOM AND MUST REMAIN ACTIVE THROUGHOUT CONSTRUCTION.
 - ③ EXISTING HALON SYSTEM ANNUNCIATOR PANEL, PROVIDE SUPERVISORY CONNECTION TO FIRE ALARM CONTROL PANEL.

REV.	DESCRIPTION	DATE
0	CONSTRUCTION DOCUMENTS	05.10.13

CONSTRUCTION DOCUMENTS
05.10.13

PROJECT NORTH

DEC 21 13

WBRC
ARCHITECTS • ENGINEERS

WWW.WBRCAE.COM
BANGOR, MAINE 207-947-4511
PORTLAND, MAINE 207-628-4511
SARASOTA, FLORIDA 941-556-0737

PAYSON SMITH FIRE ALARM UPGRADES

PROJECT: PORTLAND, MAINE

BASEMENT FIRE ALARM PLAN

SHEET TITLE:	3842.12 - FA100	
WBRC CAD FILE:	3842.12	GRAPHIC SCALE: 0" = 1'
PROJECT No.:	AS NOTED	
SCALE:	SJL	SHEET No.:
PM:	KRM	FA100
DRAWN BY:	SJL	© COPYRIGHT 2013 WBRC

A1 BASEMENT FIRE ALARM PLAN

1/8" = 1'-0"