

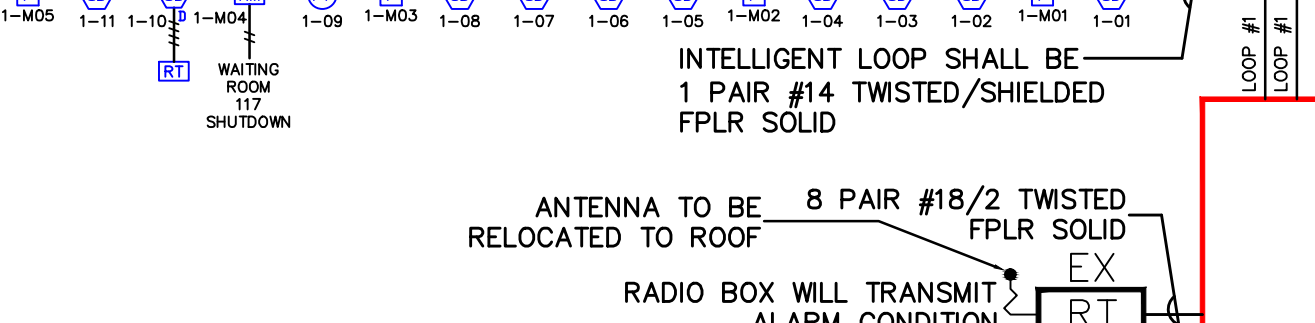
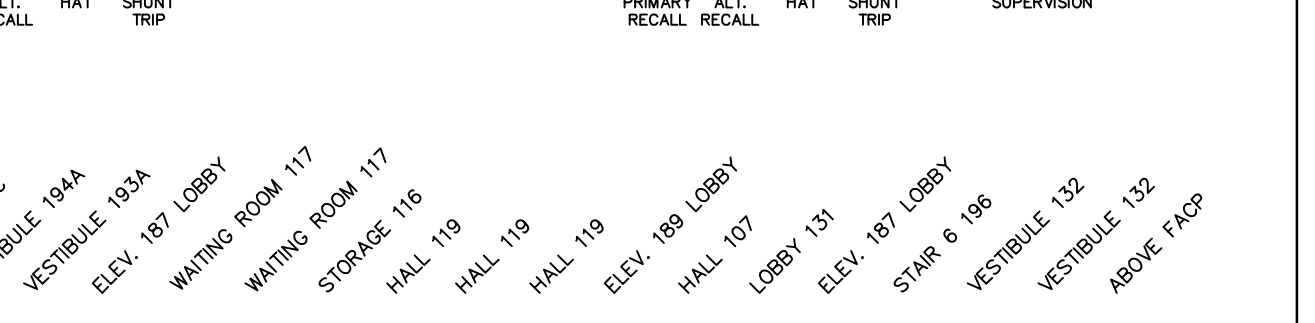
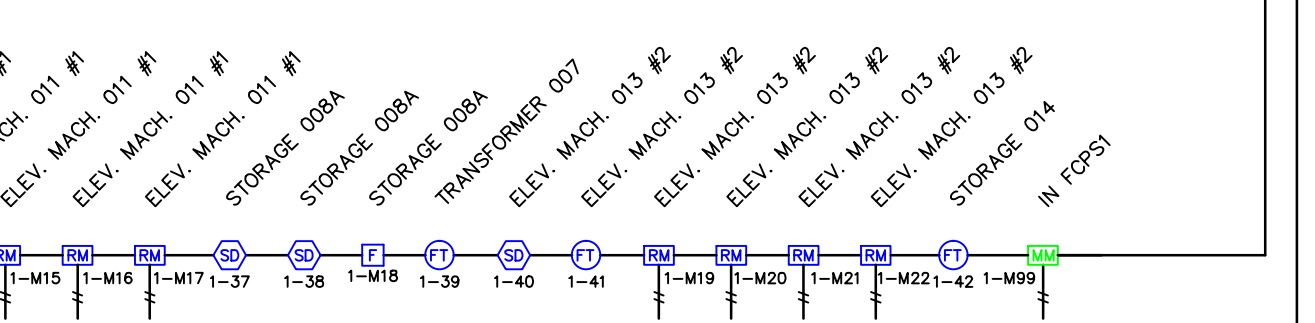
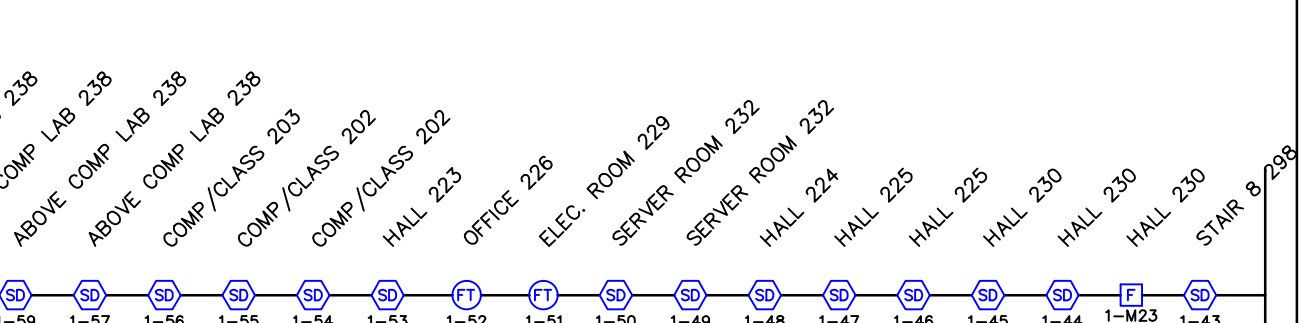
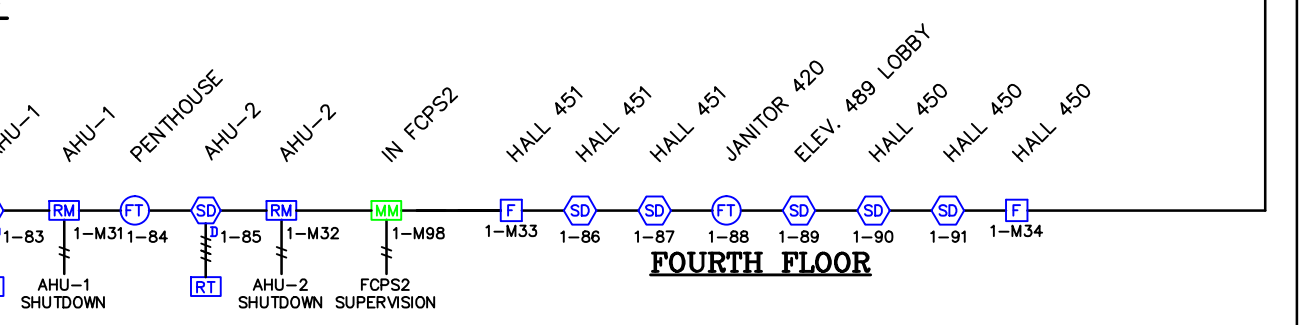
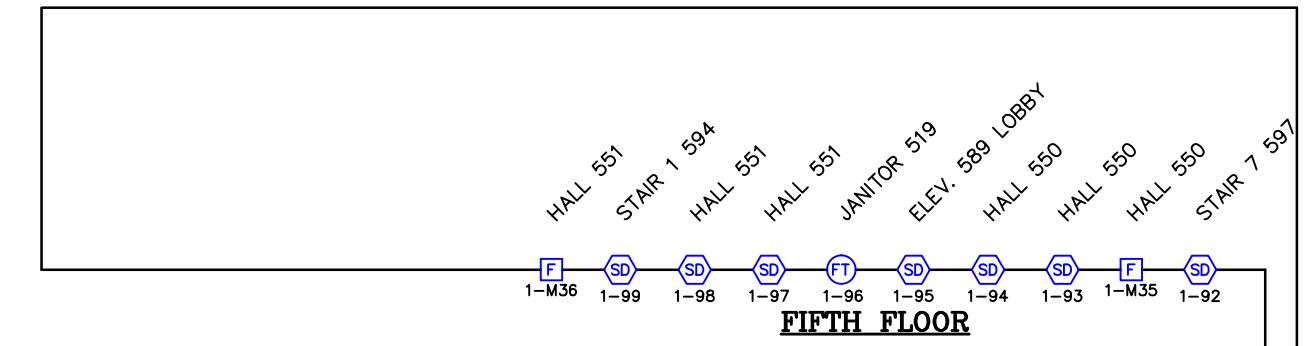
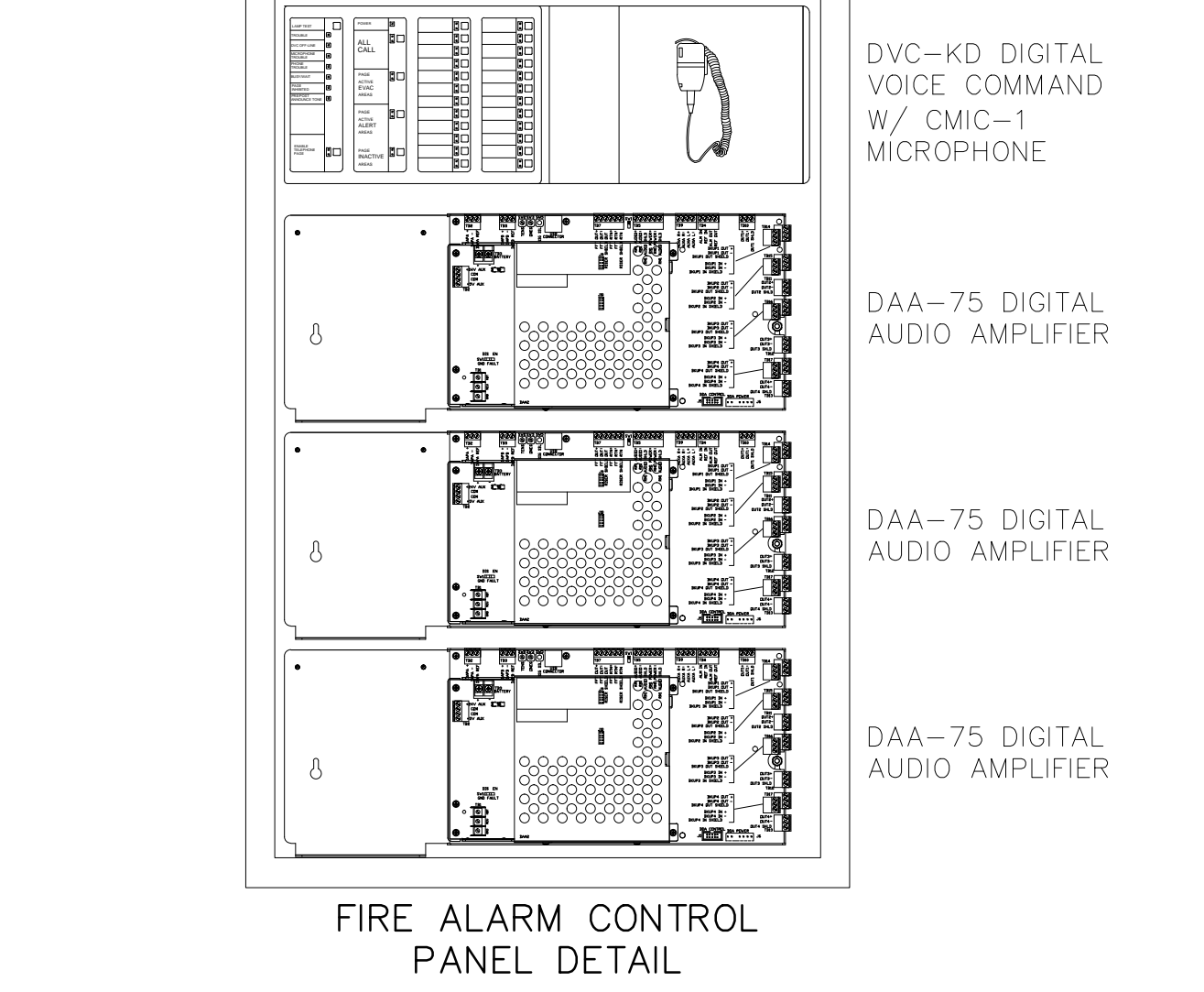
**FIRE ALARM NOTES:**

- 1. SPEAKER CIRCUITS ARE INDICATED ON RISER DIAGRAM AND SYSTEM DESIGN DRAWINGS BY SUBSCRIPT S-1,2,3, ETC.; PLEASE REFER TO RISER AND SYSTEM LAYOUT DRAWINGS FOR LOCATION OF DEVICES.
2. 24VDC STROBE CIRCUITS ARE INDICATED ON RISER DIAGRAM AND SYSTEM DESIGN DRAWINGS BY SUB-SCRIPT V-1, 2, 3, ETC.; PLEASE REFER TO RISER AND SYSTEM LAYOUT DRAWINGS FOR LOCATION OF DEVICES.
3. ALL SPEAKERS ARE TO BE SET FOR 25 VOLT OPERATION AND SPEAKER WATTAGES ARE AS SHOWN ON THE SYSTEM DESIGN DRAWINGS.
4. ALL SPEAKERS ARE TO BE MOUNTED IN A FOUR (4) INCH SQUARE x 2-1/8 INCH DEEP BACKBOX WITH NO EXTENSION RING REQUIRED. THE SHIELD SHOULD BE TWISTED TOGETHER AND TAPED SECURELY IN EACH BACK BOX IN ORDER TO AVOID SHORTS AND GROUNDS WITHIN THE SYSTEM SPEAKER CIRCUITS.
5. THE SIGNAL CIRCUITS ARE TO BE WIRED AND INSTALLED WITH NO DEVIATION TO THE FIRE ALARM SYSTEM RISER DIAGRAM AND LAYOUT DRAWINGS DUE TO CIRCUIT AMPERAGE RESTRICTIONS WITHOUT FIRST DISCUSSING WITH AND OBTAINING APPROVAL FROM BK SYSTEMS, INC.
6. THE SIGNALS OF INTERIOR AND EXTERIOR AUDIO/VISUAL DEVICES SHOWN ON THE DRAWINGS HAVE BEEN LOCATED IN ACCORDANCE WITH NFPA 72. UNDER NO CIRCUMSTANCES SHALL THE ELECTRICAL CONTRACTOR CHANGE THE LOCATIONS OF ANY OF THESE DEVICES WITHOUT FIRST DISCUSSING WITH AND OBTAINING APPROVAL FROM BK SYSTEMS, INC. IF THE ELECTRICAL CONTRACTOR INSTALLS ANY OF THESE DEVICES IN LOCATIONS OTHER THAN AS SHOWN ON THE CONTRACT DOCUMENTS, THE ELECTRICAL CONTRACTOR WILL BE RESPONSIBLE FOR ALL COSTS ASSOCIATED WITH RELOCATING, PATCHING AND PAINTING WHERE DEVICES HAD BEEN IMPROPERLY INSTALLED.
7. THE END-OF-LINE DEVICES MUST BE LOCATED IN A COMMON AREA ONLY.
8. NO WIRING OR CONDUITS TO ENTER OR EXIT FROM TOP LEFT CORNER OF THE FIRE ALARM CONTROL PANEL DUE TO LOCATIONS OF POWER SUPPLIES. NO WIRING OR CONDUITS TO ENTER OR EXIT THROUGH THE BOTTOM OF THE FIRE ALARM CONTROL PANEL EXCEPT FOR BATTERY BOX CONNECTIONS. ALL CONDUITS THAT ENTER THE CONTROL PANEL SHALL BE NO LARGER THAN ONE (1) INCH.
9. NO WIRING OR CONDUITS TO ENTER OR EXIT FROM TOP LEFT CORNER OF THE FIRE ALARM CONTROL PANEL DUE TO LOCATIONS OF POWER SUPPLIES.
10. ALL SMOKE AND HEAT DETECTORS SHALL BE LOCATED A MINIMUM OF 3'-0" AWAY FROM ALL SUPPLY AIR DIFFUSERS.

WBRC ARCHITECTURAL ENGINEERS logo and project information including reviewer name (Stephanie J. Lapina, P.E.) and date (07/03/13).

Refer to marked comments in this submittal for minor labeling revisions.

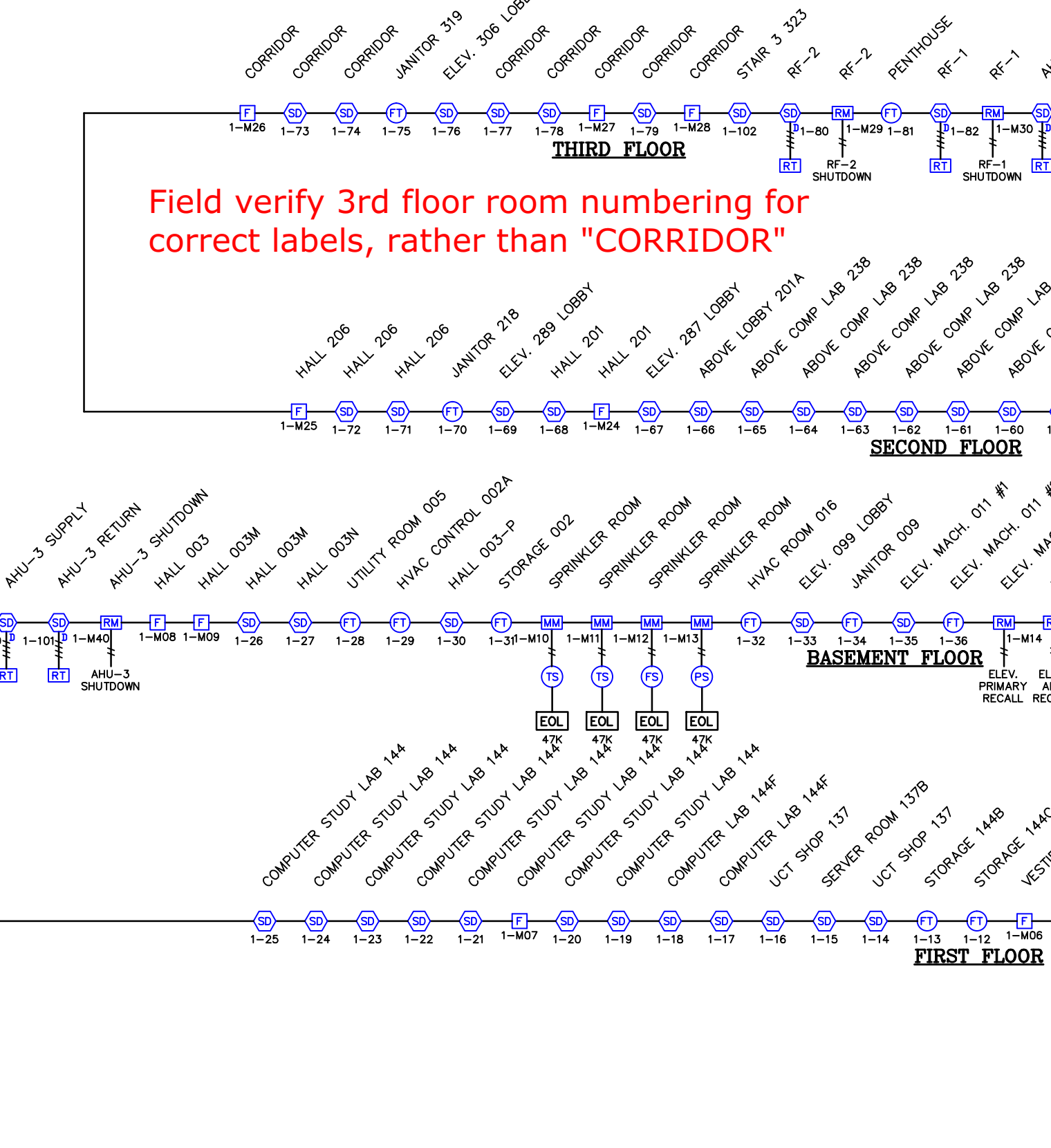
SYSTEM INPUTS table with columns for device type (e.g., Manual Fire Alarm Pull Stations, Smoke Detectors, Heat Detectors, etc.) and rows for floors (Basement, 1st-5th, etc.).



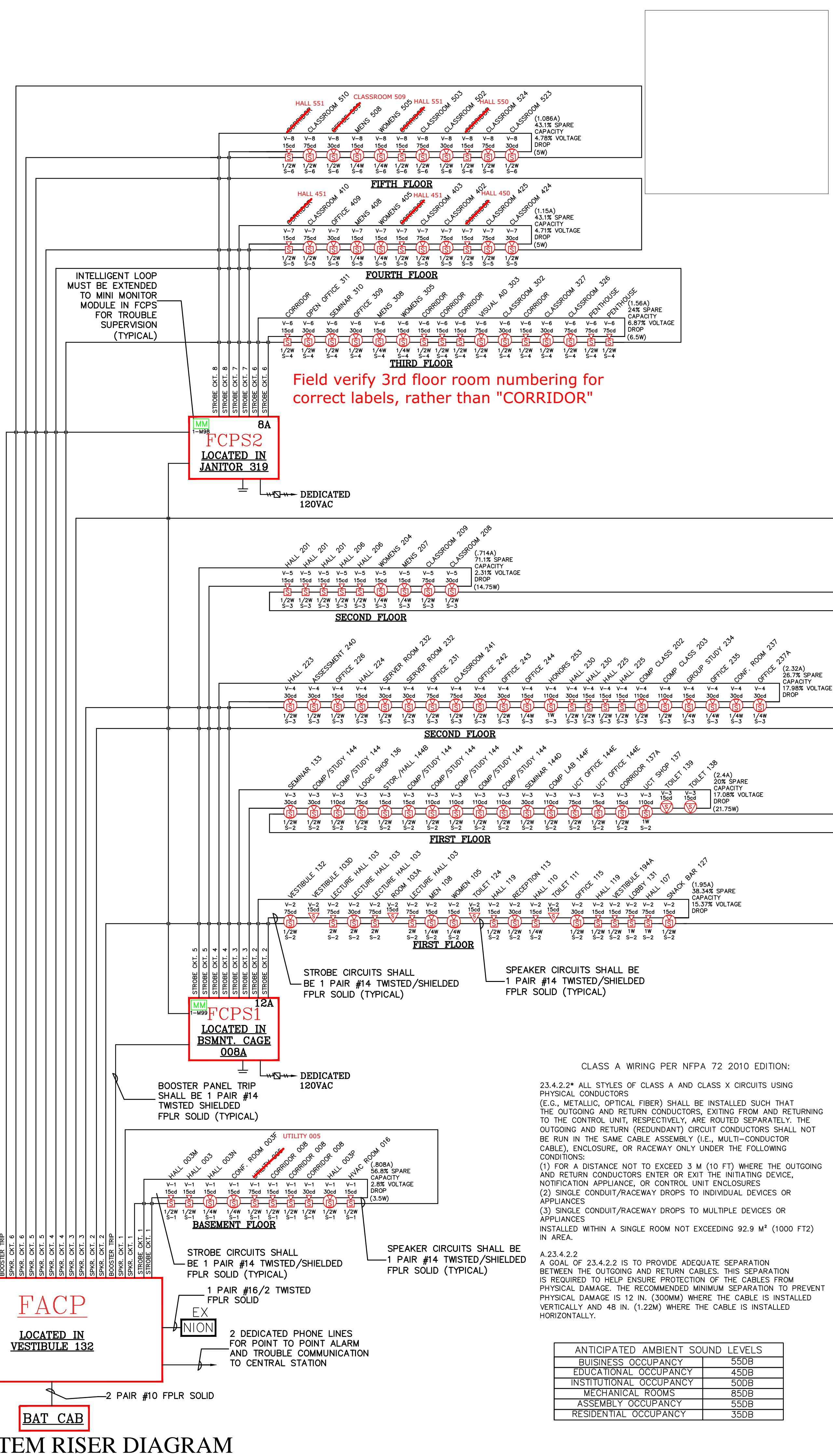
**FIRE ALARM LEGEND**

- FCPS INTELLIGENT ADDRESSABLE FIRE ALARM CONTROL PANEL (NOTIFIER #NFS2-640)
BAT BATTERY CABINET (NOTIFIER #NFS-LBBR)
FCPS FIRE CONTROL POWER SUPPLY WITH BATTERY BACKUP (HONEYWELL #HPFFB)
RT RADIO TRANSMITTER BOX (AES #778BF)
NCOM NETWORK COMMUNICATION MODULE (NOTIFIER #NION)
EX EXISTING DOCUMENT BOX
EX EXISTING KNOX BOX
F ADDRESSABLE DUAL ACTION MANUAL PULL STATION (NOTIFIER #NBG-12LX)
S ADDRESSABLE SMOKE DETECTOR (NOTIFIER #FSP-851 WITH #B210LP BASE)
DS ADDRESSABLE DUCT SMOKE DETECTOR (NOTIFIER #DNR WITH FST-851R AND #ST-3 SAMPLING TUBE)
H ADDRESSABLE 135' F.T. HEAT DETECTOR (NOTIFIER #FST-851 WITH #B210LP BASE)
M ADDRESSABLE MONITOR MODULE (NOTIFIER #FMM-1)
MM ADDRESSABLE MINI MONITOR MODULE (NOTIFIER #FMM-101)
RM ADDRESSABLE RELAY MODULE (NOTIFIER #FRM-1)
RT REMOTE TEST STATION (NOTIFIER #RTS151)
S24 24VDC SYNC. MULTI-CANDELA SPEAKER/STROBE (NOTIFIER #SPSW)
S24S 24VDC SYNC. MULTI-CANDELA SPEAKER/STROBE (NOTIFIER #SPSCW)
S24SYN 24VDC SYNCHRONIZED MULTI-CANDELA STROBE (NOTIFIER #SW)
NOTE: SET CANDELA RATING OF ALL SPEAKER/STROBES AND STROBES AS SHOWN ON SYSTEM DESIGN DRAWINGS.
S24W 24VDC WALL MOUNT MAGNETIC DOOR HOLDERS (NOTIFIER #FM-998)
PS SPRINKLER SYSTEM WATER FLOW SWITCH
PS SPRINKLER SYSTEM TAMPER SWITCH
PS SPRINKLER SYSTEM PRESSURE SWITCH
EOLR END-OF-LINE-RESISTOR
TICKS DENOTES NUMBER OF #14 FPLR FIRE ALARM RATED CONDUCTORS
\* DEVICE TO BE FURNISHED AND INSTALLED BY OTHERS BUT WIRED BY THE E.C.

**FIRE ALARM SEQUENCE OF OPERATION MATRIX**



NOTE: THE SPECIFIED FIRE ALARM SYSTEM AND PERIPHERAL DEVICES SHALL BE NOTIFIER AS FURNISHED BY: BK SYSTEMS, INC. 4 COTE AVENUE GOFFSTOWN, NH 03045 TELEPHONE: 603-647-8775 FAX: 603-647-4806 EMAIL: NIKWEESTER@BKSYSTEMSINC.COM



This drawing and the information and design application herein contained is the property of BK Systems, Inc.; all information herein contained shall be treated as proprietary and confidential; no reproduction of this drawing or part thereof shall be made without the written consent of BK Systems, Inc.

Project information table including Project No. (13-062), Date (06/26/13), Revisions, and Approved By (K. Kларdie).

USM - LUTHER BONNEY HALL PORTLAND, MAINE FIRE ALARM RISER DIAGRAM, NOTES, LEGEND, and SHEET: FA-502

ANTICIPATED AMBIENT SOUND LEVELS table with categories like BUSINESS OCCUPANCY (55DB), EDUCATIONAL OCCUPANCY (45DB), etc.