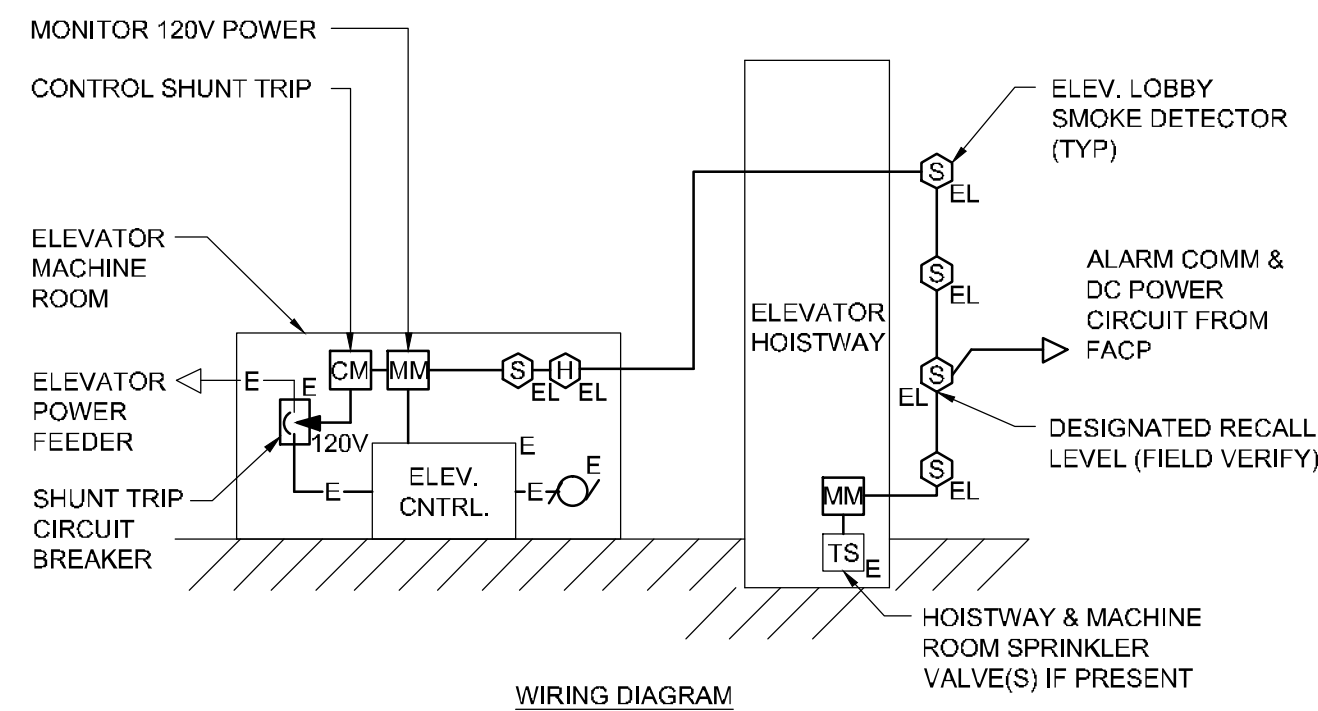


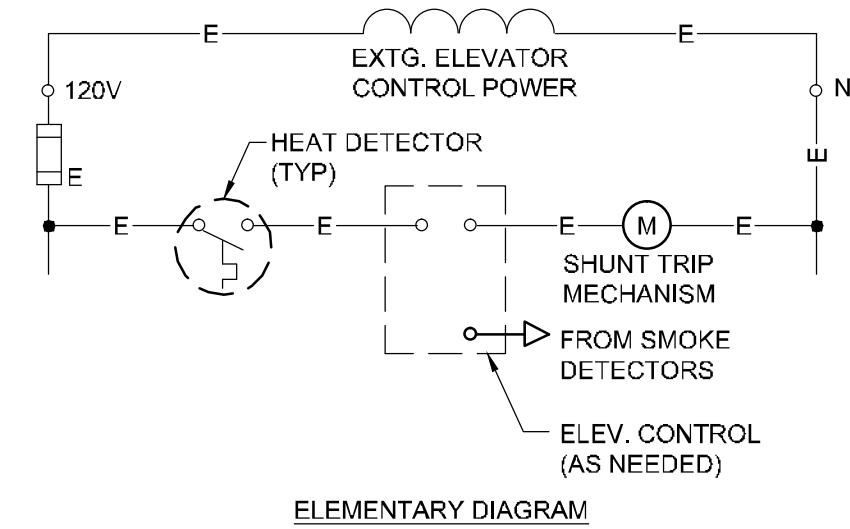
5/10/2013 4:03 PM A:\3801-3900\384210 USM FIRE ALARM SYSTEM UPGRADES\2 DESIGN DWGS\BUDG\LUTHER BONNEY 69002\FIRE ALARM UPGRADES\SHEETS\3842.13-FA501 FIRE ALARM DETAILS & LEGEND.DWG KYLE MAHAR



WIRING DIAGRAM

NOTES:

1. REFER TO NFPA 72-2013 SECTION 21.3 FOR SMOKE DETECTOR ELEVATOR CONTROL CIRCUIT REQUIREMENTS. ACTIVATION OF SMOKE DETECTORS TO CAUSE ELEVATOR CONTROL TO RECALL CAR TO DESIGNATED FLOOR AND OPEN DOORS.
2. FIRE ALARM SYSTEM SHALL BE ADDRESSABLE TYPE. PROVIDE ANY NECESSARY INTERFACE RELAYS BETWEEN 120V AND FIRE ALARM COMPONENTS. LOBBY, HOISTWAY, AND MACHINE DETECTORS SHALL BE ADDRESSABLE CONTROL MODULES TO PROVIDE CONTROL OUTPUTS TO ELEVATOR MACHINE.
3. HEAT DETECTOR ALARM TEMPERATURE TO BE MINIMUM 10°F LOWER THAN SPRINKLER HEAD, PER NFPA 72-2013. MOUNT HEAT DETECTOR WITHIN 2'-0" OF SPRINKLER HEAD.
4. REFER TO NFPA 72-2013 SECTION 21.4 FOR ELEVATOR SHUTDOWN SEQUENCE. ACTIVATION OF ANY HEAT DETECTOR TO ACTIVATE SHUNT TRIP TO POWER DOWN ELEVATOR EQUIPMENT. MONITOR 120V AND INITIATE FIRE ALARM TROUBLE IN EVENT OF LOSS OF SHUNT TRIP POWER.
5. COORDINATE ALL WORK WITH ELEVATOR INSPECTOR & SPRINKLER CONTRACTOR(S) TO MEET LIFE SAFETY AND ELEVATOR CODE REQUIREMENTS.



ELEMENTARY DIAGRAM

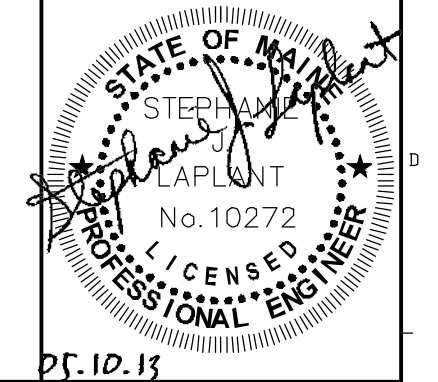
E1 ELEVATOR WIRING DIAGRAM

NTS

REV.	DESCRIPTION	DATE
0	CONSTRUCTION DOCUMENTS	05.10.13

CONSTRUCTION DOCUMENTS  
05.10.13

CURRENT ISSUE STATUS:



Pf. ID: 15

**WBRC**  
ARCHITECTS • ENGINEERS  
WWW.WBRCAE.COM  
BANGOR, MAINE 207-697-4511  
PORTLAND, MAINE 207-626-4511  
SARASOTA, FLORIDA 941-556-0757

LUTHER BONNEY FIRE  
ALARM UPGRADES

PROJECT: PORTLAND, MAINE

FIRE ALARM DETAILS &  
LEGEND

SHEET TITLE:

WBRC CAD FILE: 3842.13 - FA501

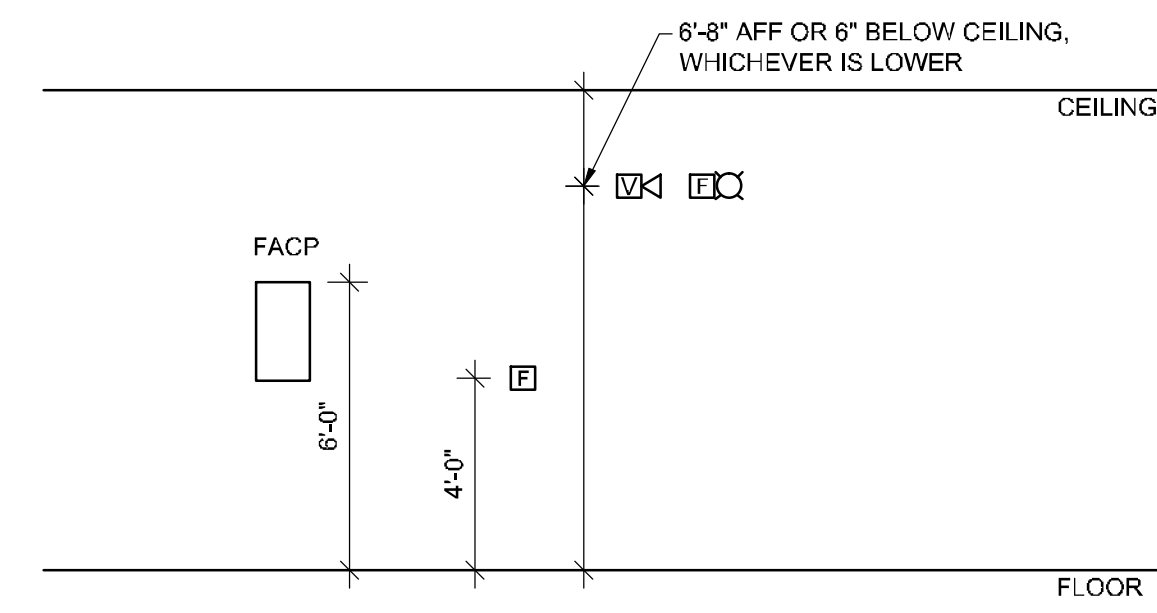
PROJECT No. 3842.13 GRAPHIC SCALE: 0" = 1"

SCALE: AS NOTED

PM: SJL SHEET No.

DRAWN BY: KRM **FA501**

A/E OF RECORD: SJL



NOTE:  
IT IS THE INTENT OF THIS DETAIL TO CENTER ALL DEVICES (ELEC & MECH) LOCATED ABOVE/BELOW/BESIDE EACH OTHER ALONG THE SAME CENTERLINE. PROVIDE MTG. BLOCKING/SUPPORTS AS REQ'D.

A1 MOUNTING HEIGHT DETAIL

NTS

LEGEND

ALL DEVICES, FIXTURES, ETC. SHALL BE NEW UNLESS DESIGNATED WITH THE FOLLOWING TAGS:

- E EXISTING TO REMAIN
- ER EXISTING RELOCATED
- NR NEW TO REPLACE EXISTING IN EXISTING LOCATION
- R EXISTING TO BE REMOVED
- RR REMOVE & RELOCATE EXISTING
- [FACP] FIRE ALARM SYSTEM CONTROL PANEL
- [FAA] FIRE ALARM ANNUNCIATOR
- [H] FIRE ALARM SYSTEM CEILING MOUNTED HEAT DETECTOR
- [S] FIRE ALARM SYSTEM CEILING MOUNTED SMOKE DETECTOR
- [S] FIRE ALARM SYSTEM DUCT MOUNTED SMOKE DETECTOR
- [P] WALL MOUNTED FIRE ALARM SYSTEM MANUAL PULL STATION
- [V] FIRE ALARM SYSTEM WALL MOUNTED VOICE/VISUAL DEVICE WITH VISUAL DEVICE CANDELA RATING AS NOTED
- [V] FIRE ALARM SYSTEM WALL MOUNTED VISUAL DEVICE ONLY - CANDELA RATING AS NOTED FIRE ALARM SYSTEM
- [DH] DOOR HOLD-OPEN DEVICE CONNECTION
- [PS] FIRE ALARM SYSTEM/SPRINKLER SYSTEM PRESSURE SWITCH
- [FS] FIRE ALARM SYSTEM/SPRINKLER SYSTEM FLOW SWITCH
- [TS] FIRE ALARM SYSTEM/SPRINKLER SYSTEM TAMPER SWITCH

ABBREVIATIONS

- A AMPERES
- AFG ABOVE FINISHED FLOOR
- AFG ABOVE FINISHED GRADE
- ATS AUTOMATIC TRANSFER SWITCH
- BATT BATTERY
- BHEC BANGOR HYDRO ELECTRIC CO.
- BKR BREAKER
- BLDG BUILDING
- CB CIRCUIT BREAKER
- CKT CIRCUIT
- CLG CEILING
- CMP CENTRAL MAINE POWER CO.
- CT CURRENT TRANSFORMER
- DN DOWN
- DWG DRAWING
- EMERG EMERGENCY
- EMT ELECTRICAL METALLIC TUBING
- EQUIP EQUIPMENT
- FA FIRE ALARM
- FAA FIRE ALARM ANNUNCIATOR
- FACP FIRE ALARM CONTROL PANEL
- FA-PE FIRE ALARM SYSTEM POWER EXTENDER
- FIN FINISH FINISHED
- FLR FLOOR
- GND GROUND
- HP HORSEPOWER, HEAT PUMP
- JB JUNCTION BOX
- KVA KILO VOLT AMPS
- KW KILOWATT(S)
- LTG LIGHTING
- MAX MAXIMUM
- MIN MINIMUM
- N NEW
- OC ON CENTER
- OS/OI OWNER SUPPLIED, OWNER INSTALLED ITEM
- PAR PARTIAL CIRCUIT
- PVC POLYVINYL CHLORIDE
- RECEP RECEPTACLE
- TEL TELEPHONE
- TYP TYPICAL
- UG UNDERGROUND
- V VOLTS
- W WATTS
- WG WIRE GUARD
- WM WIREMOLD
- WP WEATHERPROOF

A4 LEGEND, ABBREVIATIONS & GENERAL NOTES

NTS

GENERAL NOTES

1. ALL WORK SHALL BE INSTALLED IN A NEAT AND WORKMAN LIKE MANNER, RECTILINEAR TO BUILDING STRUCTURE, AND IN ACCORDANCE WITH ALL APPLICABLE CODES, INCLUDING, BUT NOT LIMITED TO NFPA 70, 72, 90A, AND DIRECTION OF AUTHORITY HAVING JURISDICTION.
2. EXISTING AND NEW FIRE ALARM DEVICES ARE SHOWN IN THEIR APPROXIMATE LOCATION. CONTRACTOR SHALL REVIEW THE BUILDING, AND FIELD VERIFY, TO DETERMINE EXACT MOUNTING LOCATIONS FOR FIRE ALARM DEVICES AND EQUIPMENT. CARE SHALL BE TAKEN TO AVOID EXISTING ELECTRICAL, MECHANICAL, SPRINKLER AND OTHER CEILING AND WALL MOUNTED DEVICES AND EQUIPMENT.
3. ALL PENETRATION THROUGH FLOORS, RATED WALLS AND PARTITIONS SHALL BE SEALED WITH A U.L. LISTED AND APPROVED FIRE SEALANT MATERIAL TO MAINTAIN THE RATING OF THE SEPARATION.
4. TO THE EXTENT POSSIBLE, AREAS OF ANY KNOWN HAZARDOUS MATERIALS HAVE BEEN NOTED IN THESE DRAWINGS. CONTRACTOR SHALL AVOID THESE MATERIALS IF AT ALL POSSIBLE. IF IT IS NECESSARY TO DISTURB ANY HAZARDOUS MATERIALS, CONTRACTOR SHALL NOTIFY THE OWNER AND REQUEST DIRECTION BEFORE PROCEEDING.