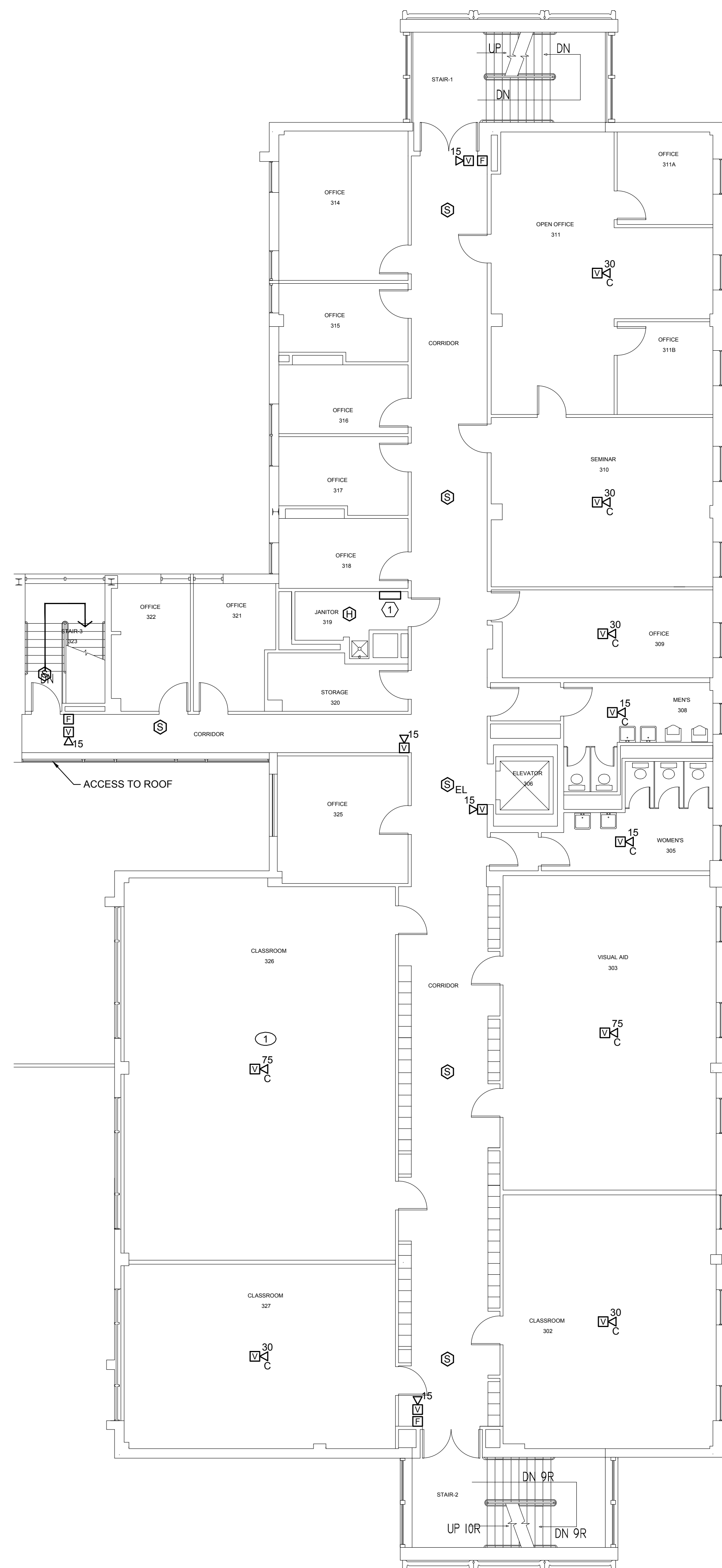
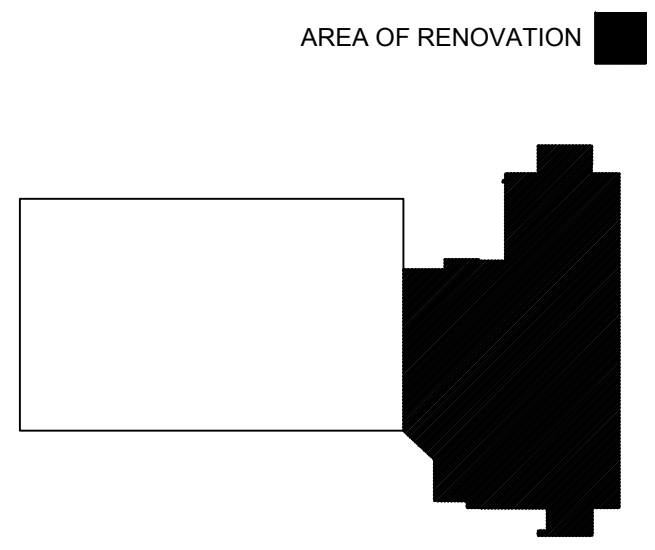


6/3/2013 9:45 AM I:\3801-3900\384210 USM FIRE ALARM SYSTEM UPGRADES\DESIGN\DWGS\BLDG\LUTHER BONNEY 8P002\BONNEY LUTHER FIRE ALARM UPGRADES\SHEETS\FA103A THIRD FLOOR FIRE ALARM PLAN - SEG A.DWG KYLE MAHAR



HAZARDOUS MATERIAL NOTES:
 ① HAZARDOUS MATERIALS HAVE BEEN IDENTIFIED WITHIN THE PIPE INSULATION IN AND AROUND THIS SPACE. CONTRACTOR SHALL AVOID DISTURBING THIS MATERIAL.

TECHNICAL NOTES:
 ① FIRE ALARM AMPLIFIER - FIELD COORDINATE EXACT LOCATION WITHIN THIS ROOM. OBTAIN POWER FROM NEARBY ELECTRICAL PANEL.



KEY PLAN

0	CONSTRUCTION DOCUMENTS	05.10.13
REV.	DESCRIPTION	DATE

CONSTRUCTION DOCUMENTS
05.10.13

CURRENT ISSUE STATUS:

PROJECT NORTH

P.C. 10.13

WBRC
 ARCHITECTS • ENGINEERS
 WWW.WBRCAE.COM
 BANGOR, MAINE 207-947-4511
 PORTLAND, MAINE 207-628-4511
 SARASOTA, FLORIDA 941-556-0757

LUTHER BONNEY FIRE ALARM UPGRADES

PROJECT: PORTLAND, MAINE

THIRD FLOOR FIRE ALARM PLAN - SEG A

SHEET TITLE:	3842.13 - FA103A	
WBRC CAD FILE:	3842.13	GRAPHIC SCALE: 0" = 1"
PROJECT No.:	AS NOTED	
SCALE:	SJL	SHEET No.
PM:	KRM	FA103A
DRAWN BY:	SJL	
A/E OF RECORD:		

A1	THIRD FLOOR FIRE ALARM PLAN - SEG A
1/8" = 1'-0"	--