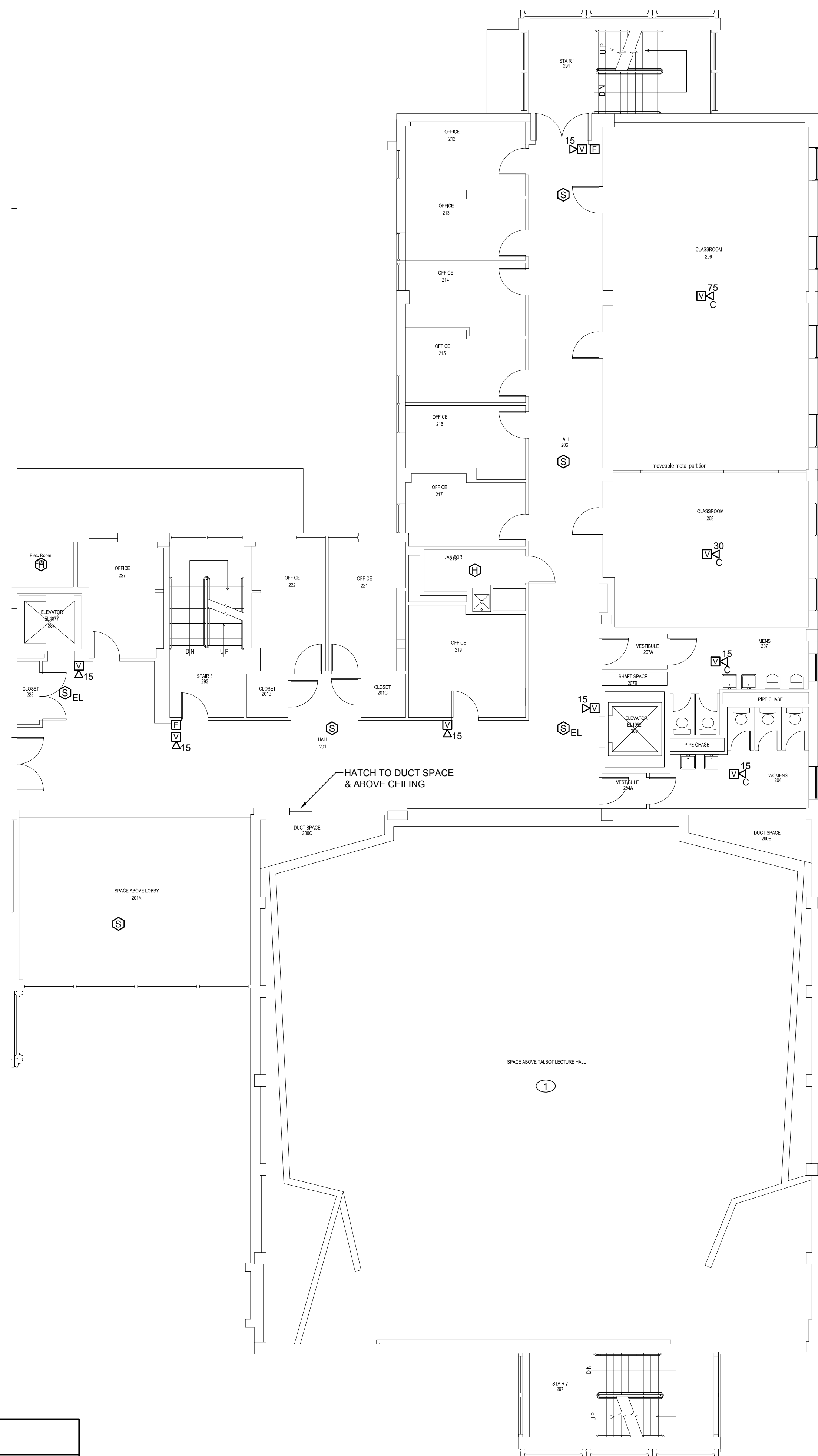


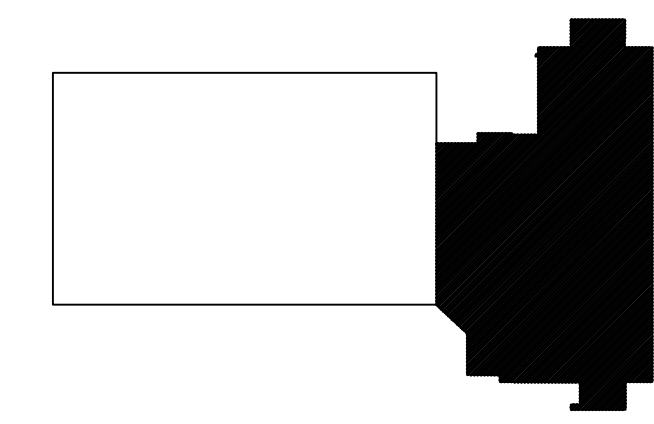
6/3/2013 9:44 AM I:\3801-3900\384210 USM FIRE ALARM SYSTEM UPGRADES\DESIGN\DWGS\BLDG\LUTHER BONNEY 8P002A BONNEY LUTHER FIRE ALARM UPGRADES\SHEETS\FA102A SECOND FLOOR FIRE ALARM PLAN - SEG A.DWG KYLE MAHAR



**HAZARDOUS MATERIAL NOTES:**

1 HAZARDOUS MATERIALS HAVE BEEN IDENTIFIED WITHIN THE FIREPROOFING MATERIAL IN AND AROUND THIS SPACE. CONTRACTOR SHALL AVOID DISTURBING THIS MATERIAL.

AREA OF RENOVATION



**KEY PLAN**

0	CONSTRUCTION DOCUMENTS	05.10.13
REV.	DESCRIPTION	DATE

**CONSTRUCTION DOCUMENTS**  
05.10.13

CURRENT ISSUE STATUS:

PROJECT NORTH

P.C. 10.13

**WBRC**  
ARCHITECTS • ENGINEERS  
WWW.WBRCAE.COM  
BANGOR, MAINE 207-947-4511  
PORTLAND, MAINE 207-626-4511  
SARASOTA, FLORIDA 941-556-0737

**LUTHER BONNEY FIRE ALARM UPGRADES**

PROJECT: PORTLAND, MAINE

**SECOND FLOOR FIRE ALARM PLAN - SEG A**

SHEET TITLE:

WBRC CAD FILE:	3842.13 - FA102A
PROJECT No.	3842.13
SCALE:	AS NOTED
PM:	SJL
DRAWN BY:	KRM
A/E OF RECORD:	SJL

GRAPHIC SCALE: 0" = 1"

SHEET No. **FA102A**

© COPYRIGHT 2013 WBRC

<b>A1</b>	<b>SECOND FLOOR FIRE ALARM PLAN - SEG A</b>
1/8" = 1'-0"	--