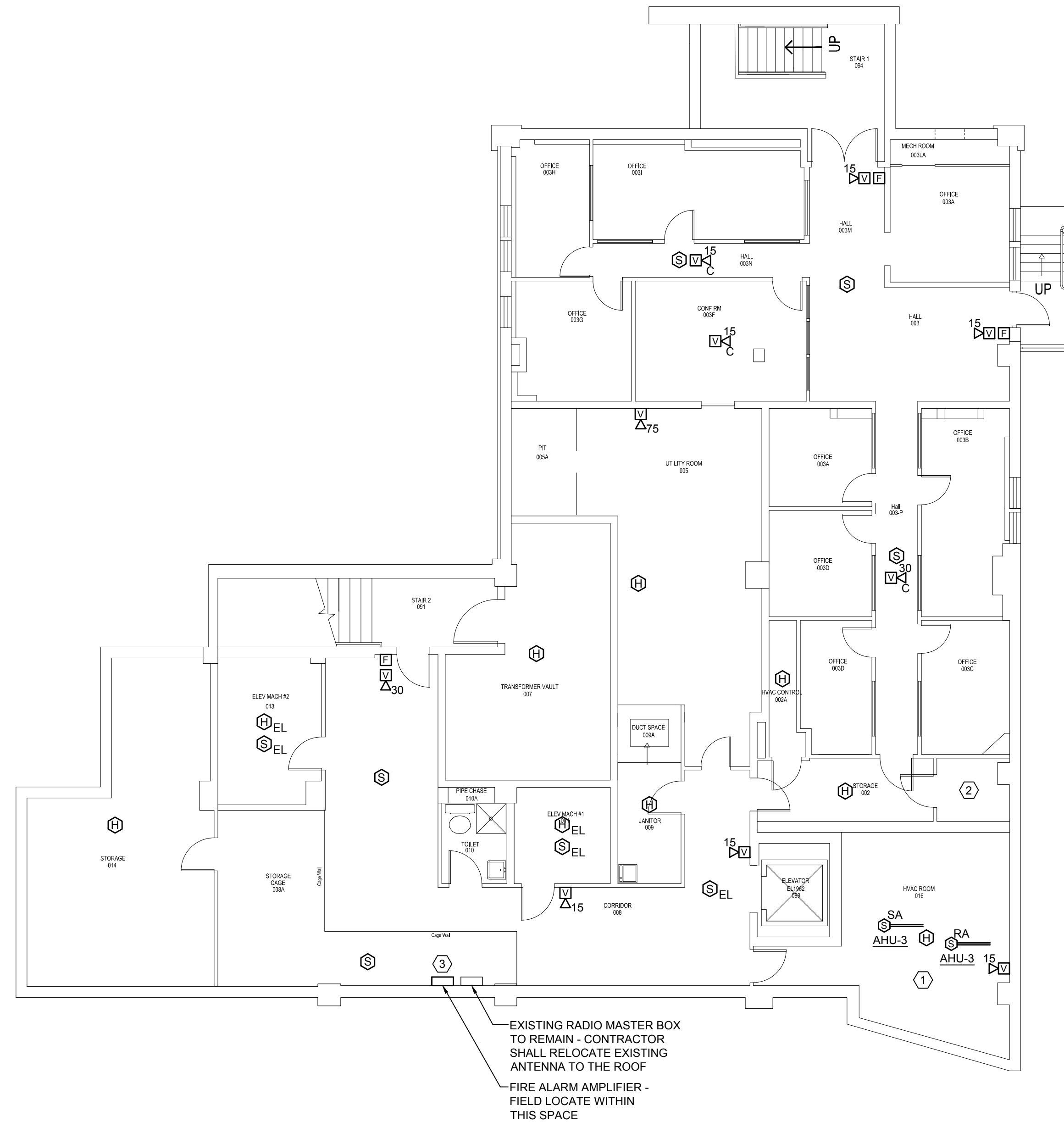
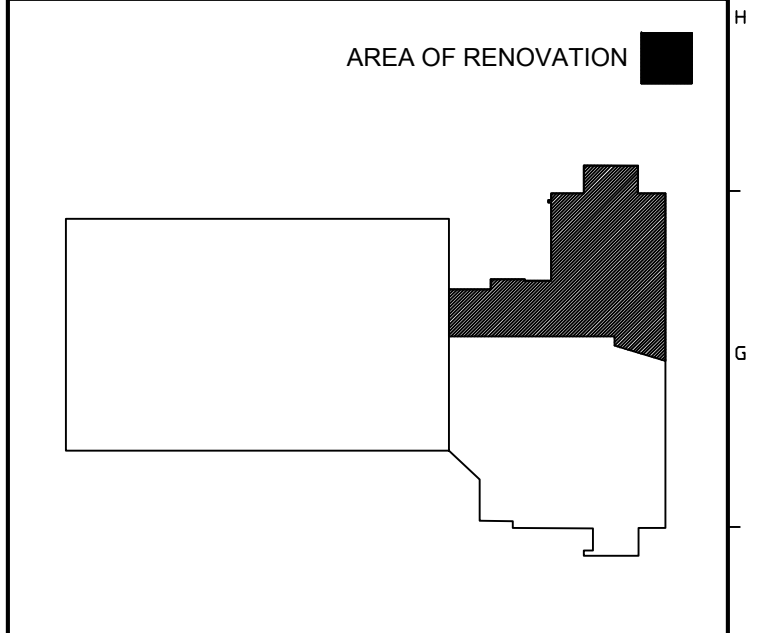


6/3/2013 9:40 AM I:\3801-3900\384210 USM FIRE ALARM SYSTEM UPGRADES\DESIGN\DWGS\BLDG\LUTHER BONNEY 6P002 BONNEY LUTHER FIRE ALARM UPGRADES\3842.13-FA100 BASEMENT FIRE ALARM PLAN.DWG KYLE MAHAR



- TECHNICAL NOTES:**
- ① DUCT SMOKE DETECTORS ARE AS NOTED DIAGRAMMATICALLY IN THIS SPACE. REPLACE EXISTING DUCT SMOKE DETECTOR WITH A NEW DEVICE AND CONNECT TO NEW FIRE ALARM SYSTEM. CONTRACTOR SHALL FIELD VERIFY THE EXACT LOCATION OF EACH EXISTING DETECTOR. IF 120V POWER IS REQUIRED, CONNECT TO NEARBY RECEPTACLE CIRCUIT.
 - ② MAINTAIN EXISTING FLOW AND TAMPER SWITCHES AND OTHER SPRINKLER SYSTEM DEVICE CONNECTIONS.
 - ③ OBTAIN POWER FROM AVAILABLE 120V CIRCUIT WITHIN THIS ROOM.



KEY PLAN

0	CONSTRUCTION DOCUMENTS	05.10.13
REV.	DESCRIPTION	DATE

CONSTRUCTION DOCUMENTS
05.10.13

CURRENT ISSUE STATUS:

PROJECT NORTH

P.C. 10.13

WBRC
ARCHITECTS • ENGINEERS
www.wbrcae.com
BANGOR, MAINE 207-947-4511
PORTLAND, MAINE 207-628-4511
SARASOTA, FLORIDA 941-556-0757

LUTHER BONNEY FIRE ALARM UPGRADES

PROJECT: PORTLAND, MAINE

BASEMENT FIRE ALARM PLAN

SHEET TITLE:

WBRC CAD FILE:	3842.13 - FA100
PROJECT No.	3842.13
SCALE:	AS NOTED
FM:	SJL
DRAWN BY:	KRM
A/E OF RECORD:	SJL

GRAPHIC SCALE: 0" = 1"
SHEET No. **FA100**