

HARRIMAN

AUBURN PORTLAND MANCHESTER

UNIVERSITY OF SOUTHERN MAINE DEPARTMENT REORGANIZATION PROJECT 2015-011

Portland, Maine

Harriman Project No. 15457

Key Plan Proj North

KEY NOTES:

- P01... POWER-PROVIDE BLANK FACEPLATE, DRILL/MODIFY AS REQUIRED TO RECEIVE MODULAR FURNITURE POWER WHIP. MAKE ALL FINAL CONNECTIONS.
P02... DATA-PROVIDE WALL BOX WITH DOUBLE GANG MUD RING WITH BLANK FACEPLATE, DRILL FACEPLATE AND PROVIDE GROMMET AS REQUIRED FOR OWNER'S DATA/VOICE CABLING. COORDINATE WITH OWNER'S VENDOR.

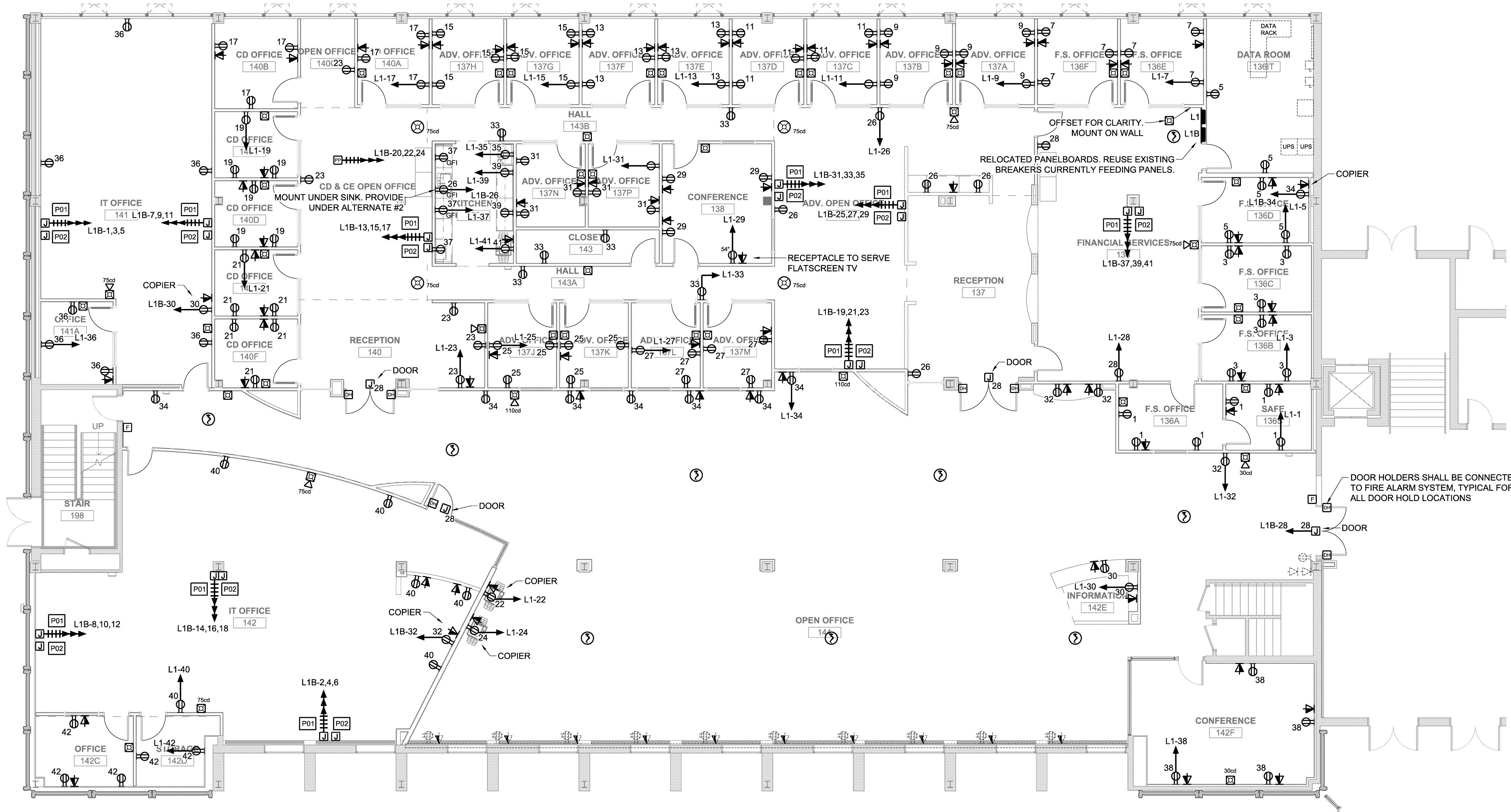
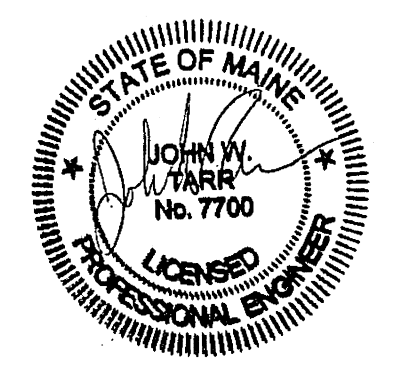


Table for L1 (Data Room) listing load descriptions, amperage, wattage, and phase loads. Includes a summary row with total amperage of 115.4 and total wattage of 41549.

Table for L1B (Financial Serv 136) listing load descriptions, amperage, wattage, and phase loads. Includes a summary row with total amperage of 83.3 and total wattage of 30000.

Issues and Revisions table with columns for Mark, Date, and Description. Lists revisions from 07-09-15 to 08-10-15.



Drawing Scales: 1/8" = 1'-0" and a graphical scale bar from 0 to 12 feet.

PA / PE: JWT © 2015
Drawn By: BSO Harriman Associates

LUTHER BONNEY FIRST FLOOR POWER AND SYSTEMS

E20.1