

UNIVERSITY OF SOUTHERN MAINE

SCIENCE BUILDING C300 CHEMISTRY LAB

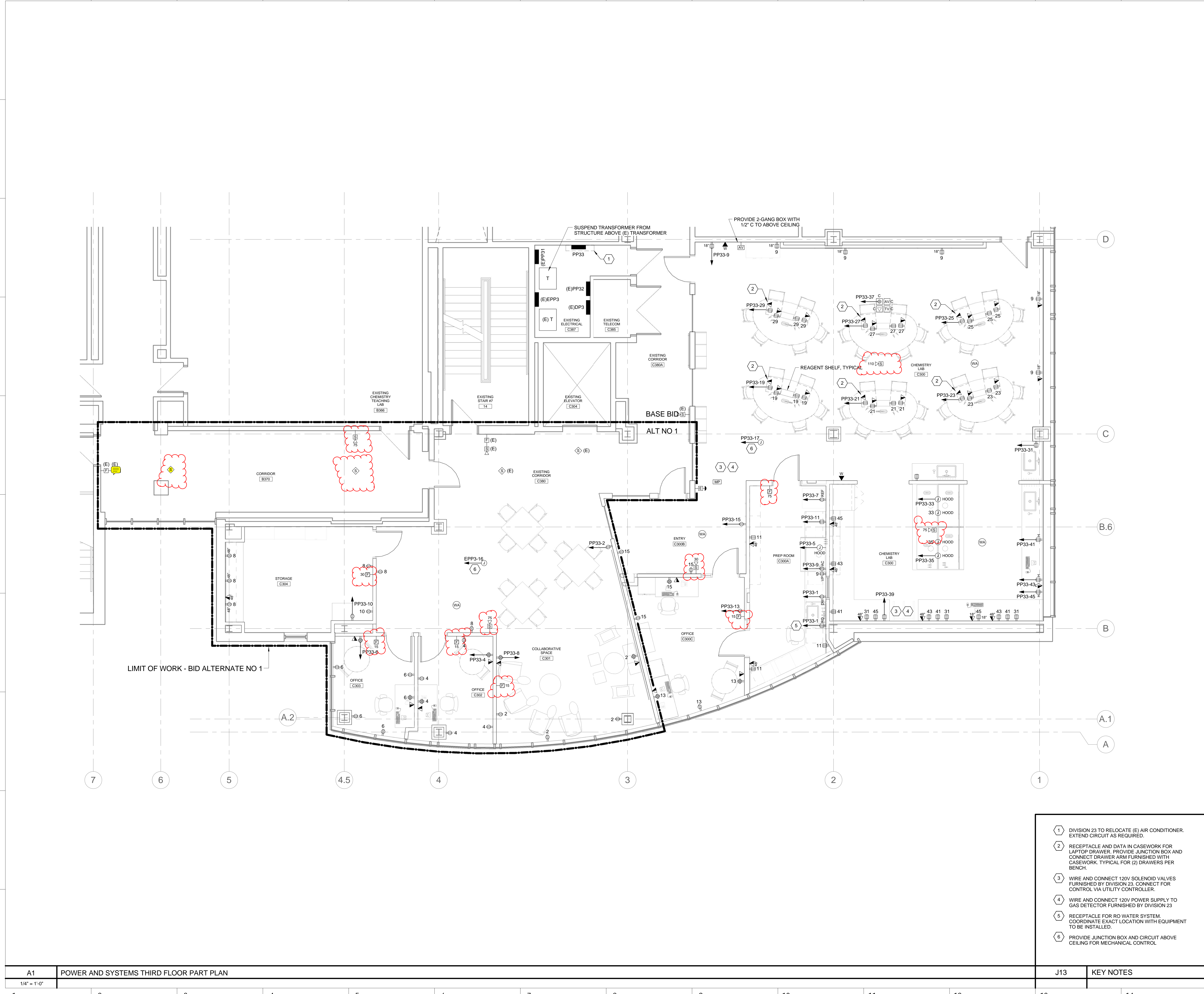
Street, City, State, Zip

NO.	DESCRIPTION	DATE
PERMIT SET		07/21/2015



- 1 DIVISION 23 TO RELOCATE (E) AIR CONDITIONER. EXTEND CIRCUIT AS REQUIRED.
- 2 RECEPTACLE AND DATA IN CASEWORK FOR LAPTOP DRAWER. PROVIDE JUNCTION BOX AND CONNECT DRAWER ARM FURNISHED WITH CASEWORK. TYPICAL FOR (2) DRAWERS PER BENCH.
- 3 WIRE AND CONNECT 120V SOLENOID VALVES FURNISHED BY DIVISION 23. CONNECT FOR CONTROL VIA UTILITY CONTROLLER.
- 4 WIRE AND CONNECT 120V POWER SUPPLY TO GAS DETECTOR FURNISHED BY DIVISION 23
- 5 RECEPTACLE FOR RO WATER SYSTEM. COORDINATE EXACT LOCATION WITH EQUIPMENT TO BE INSTALLED.
- 6 PROVIDE JUNCTION BOX AND CIRCUIT ABOVE CEILING FOR MECHANICAL CONTROL.

CONTENT: POWER AND SYSTEMS THIRD FLOOR PART PLAN	
DRAWN BY:	DLL
PROJECT NO:	14-049-00
DATE:	08/17/2015
REVISED:	
SCALE:	As Indicated
EP1.1	
Project Phase BID DOCUMENTS	
<small>COPYRIGHT © 2015 BY LAVALLEE BRENSINGER PROFESSIONAL ASSOCIATION. ALL RIGHTS RESERVED. NO REPRODUCTION WITHOUT PERMISSION.</small>	



8/17/2015 9:27:35 AM N:\Projects\2015\15049 - USM Science Building C300 Chemistry Lab - redesign from 14073000 Drawing Files\15049-Ext