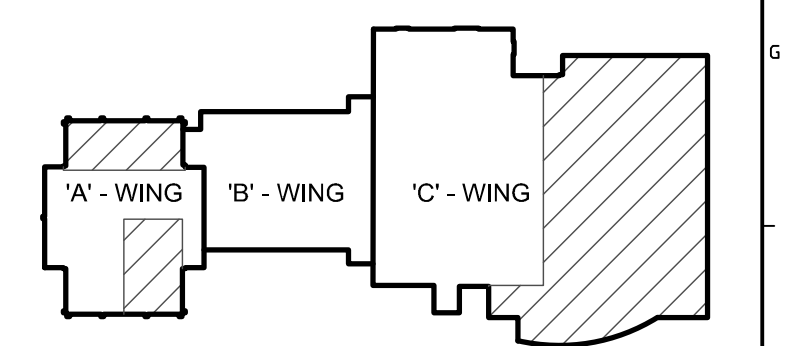


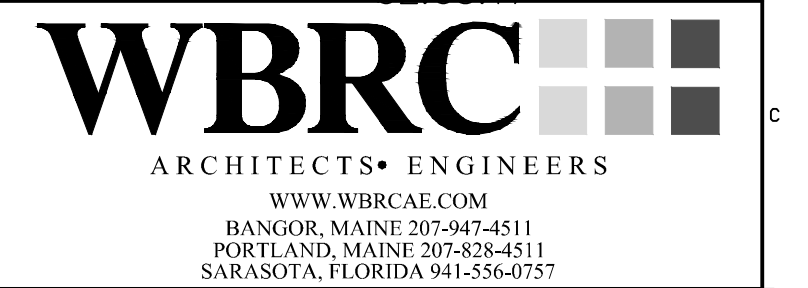
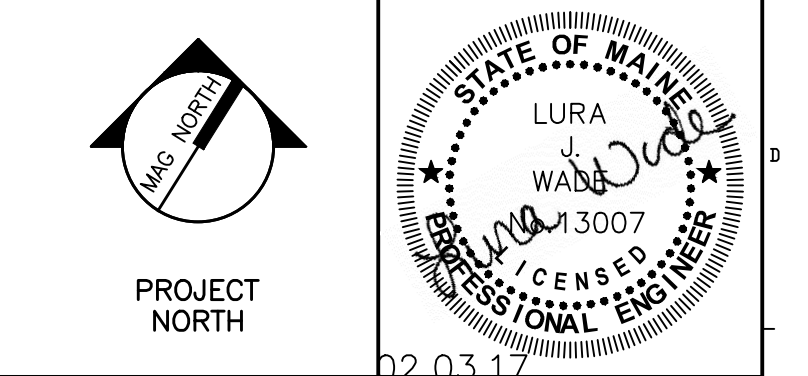
TECHNICAL NOTES

- 1 REMOVE MONUMENT MOUNTED DEVICE INSTALLED ON CASEWORK.
- 2 2-ZONE 0-10V DIMMING ROOM CONTROLLER - CONTROLLER SHALL BE EQUAL TO HUBBELL BUILDING AUTOMATION, CAT NO. NXRC-2RD-UNV. REFER TO DETAIL J8/E-501 FOR ADDITIONAL WIRING INFORMATION.
- 3 EXISTING MECHANICAL EQUIPMENT TO BE REMOVED AND RELOCATED - POWER SHOULD REMAIN AT EXISTING LOCATION FOR RECONNECTION.
- 4 EXISTING MECHANICAL EQUIPMENT TO BE REMOVED - REMOVE ALL ASSOCIATED ELECTRICAL DEVICES AND CONNECTIONS. CONDUCTORS AND CONDUIT SHOULD BE REMOVED BACK TO PANEL BOARD. IF ALL LOAD HAS BEEN REMOVED FROM BREAKER TURN OFF BREAKER AND LABEL SPARE.
- 5 RECONNECT TO EXISTING POWER CIRCUIT.
- 6 MULTI-OUTLET ASSEMBLY SHALL BE EQUAL TO WIREMOLD 4000 SERIES. DUPLEX RECEPTACLES SHALL BE 18" O.C. AND SHALL ALTERNATE CIRCUITS. DATA JACKS SHOWN SHALL BE LOCATED AS SHOWN. ANY OUTLET WITHIN 6'-0" OF WATER SOURCE SHALL BE GFI.
- 7 RECONNECT TO EXISTING LIGHTING CIRCUIT SERVING THIS AREA.
- 8 MULTI-OUTLET ASSEMBLY SHALL BE EQUAL TO WIREMOLD 4000 SERIES. DUPLEX RECEPTACLES SHALL BE 18" O.C. AND SHALL ALTERNATE CIRCUITS. DATA JACKS SHOWN SHALL BE LOCATED AS SHOWN. ANY OUTLET WITHIN 6'-0" OF WATER SOURCE SHALL BE GFI.
- 9 CEILING MOUNTED PROJECTOR CONNECTIONS - PROVIDE POWER, DATA AND A/V SYSTEMS CONNECTIONS WITHIN RECESSED CEILING BOX EQUAL TO WIREMOLD, CAT. NO. E02BSP. REFER TO DETAIL A15/E-501 FOR ADDITIONAL CONNECTION INFORMATION.
- 10 REMOVE ALL ELECTRICAL CONNECTIONS ASSOCIATED WITH FUME HOOD TO BE REMOVED. CONDUCTORS AND CONDUIT SHALL BE REMOVED BACK TO PANELBOARD. ASSOCIATED BREAKER SHALL BE TURNED OFF AND LABELED SPARE.



KEY PLAN

REV.	DESCRIPTION	DATE
0	BID DOCUMENTS	02-03-17



USM SCIENCE BUILDING OFFICE RENOVATIONS
PROJECT: PORTLAND, ME
FOURTH FLOOR ELECTRICAL PLANS

SHEET TITLE:	4128.10 - E-104
WBRC CAD FILE:	4128.10
PROJECT No.:	GRAPHIC SCALE: 0"
SCALE:	AS NOTED
PROJECT MANAGER:	MEJ
DRAWN BY:	DVS
CHECKED BY:	LJW

E-104

A1 FOURTH FLOOR ELECTRICAL DEMO PLANS

1/8" = 1'-0"

A10 FOURTH FLOOR ELECTRICAL PLANS

1/8" = 1'-0"