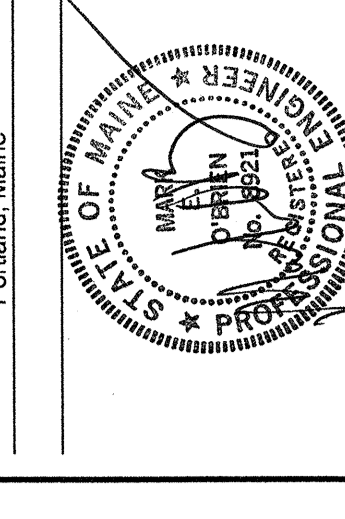


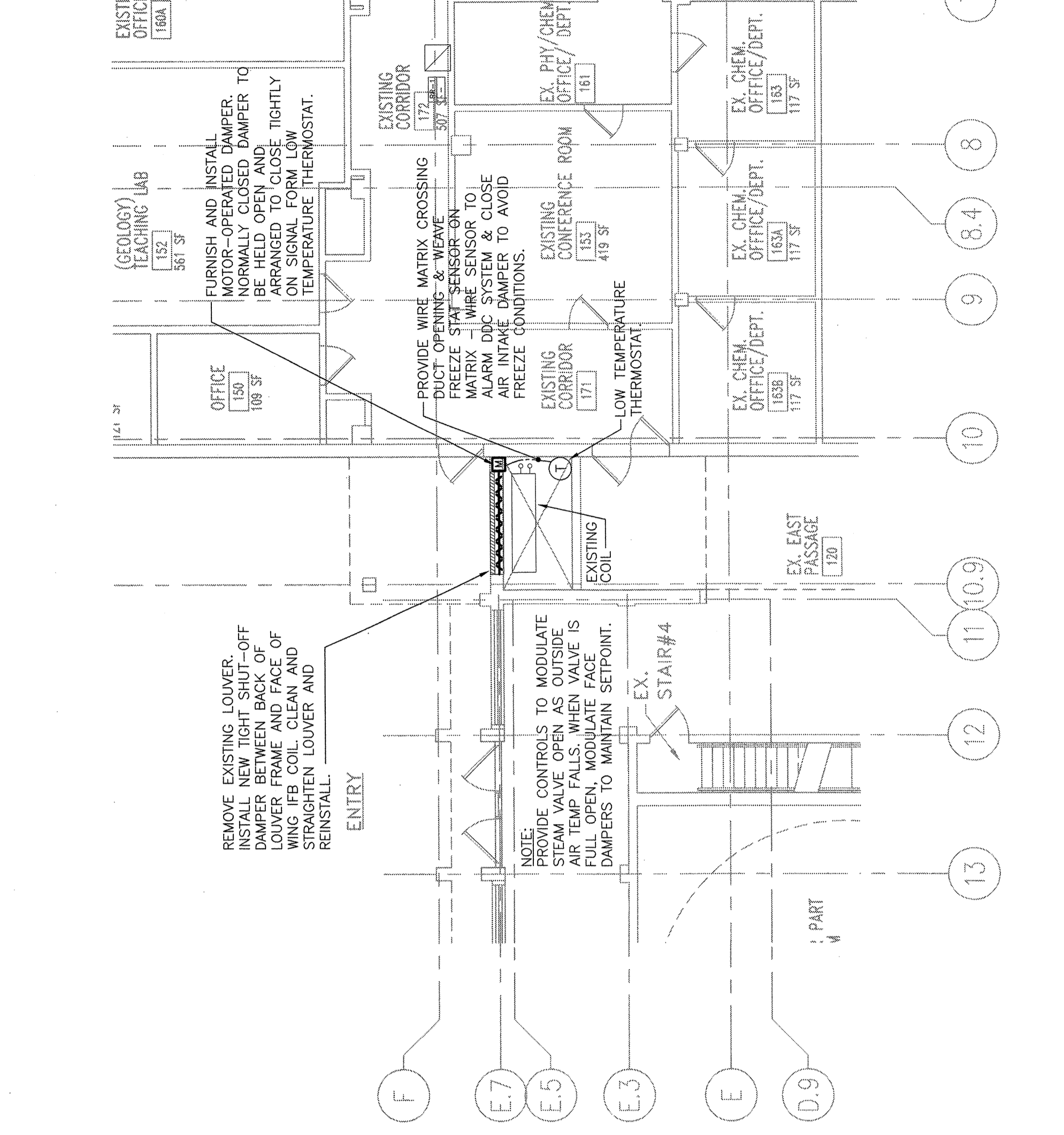
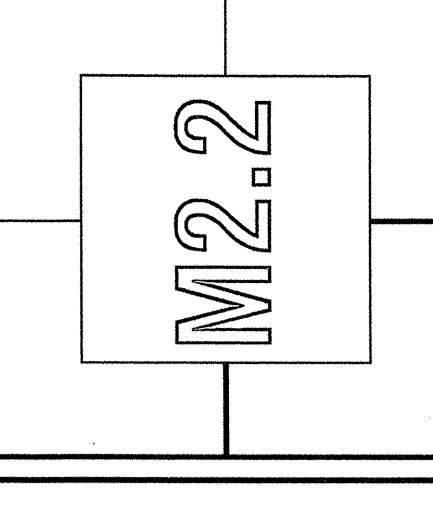
OWNER REVIEW
NAME _____ DATE _____

NO.	DATE	CONSTRUCTION	ISSUE LOG	DESCRIPTION
0	02.29.04			

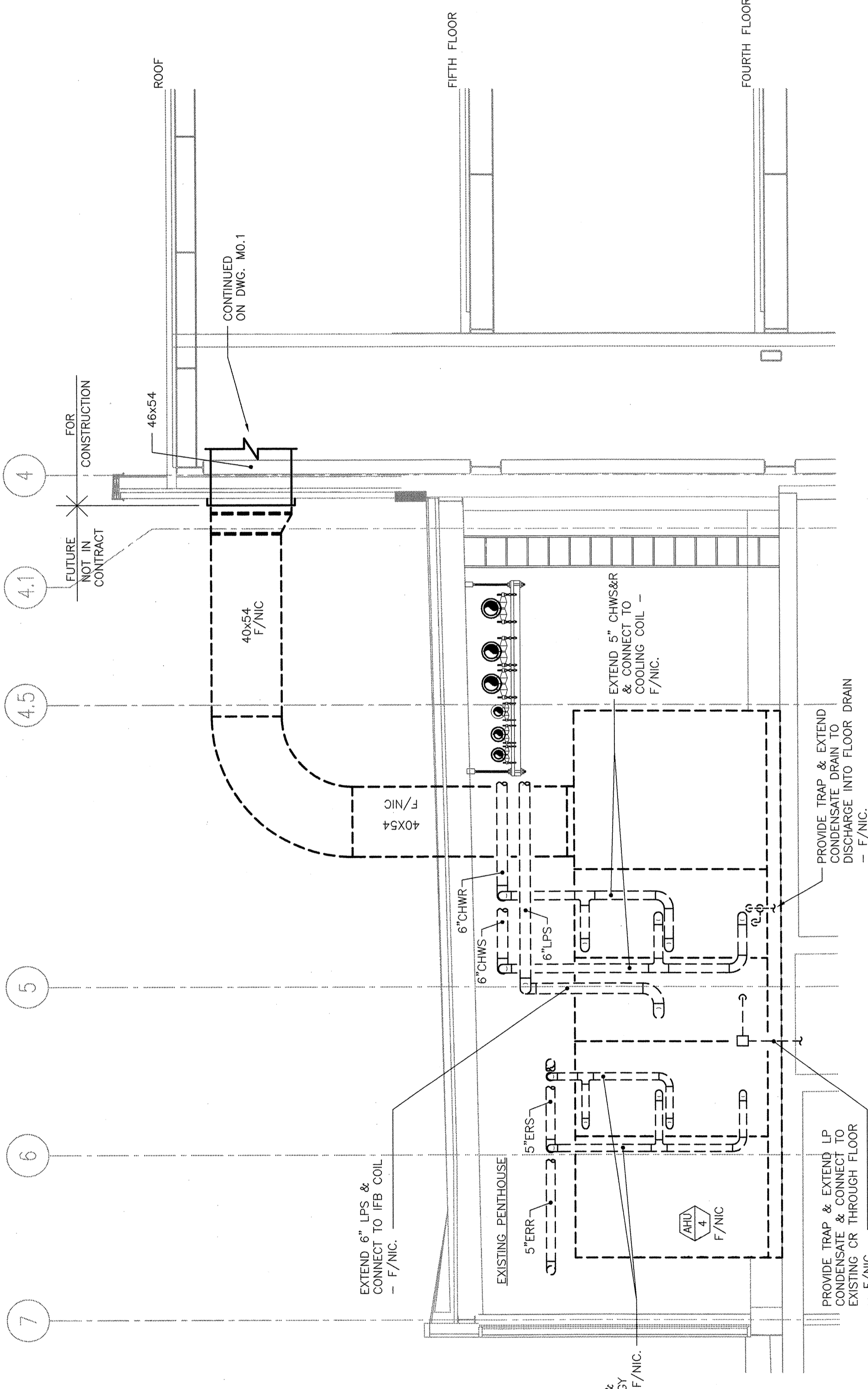
A/C OVER CHANGE
SOUTHERN MAINE MECHANICAL ASSOCIATES, INC.
25 FARMER STREET
PORTLAND, MAINE 04106
TEL: 617.447.5600
FAX: 617.554.5758



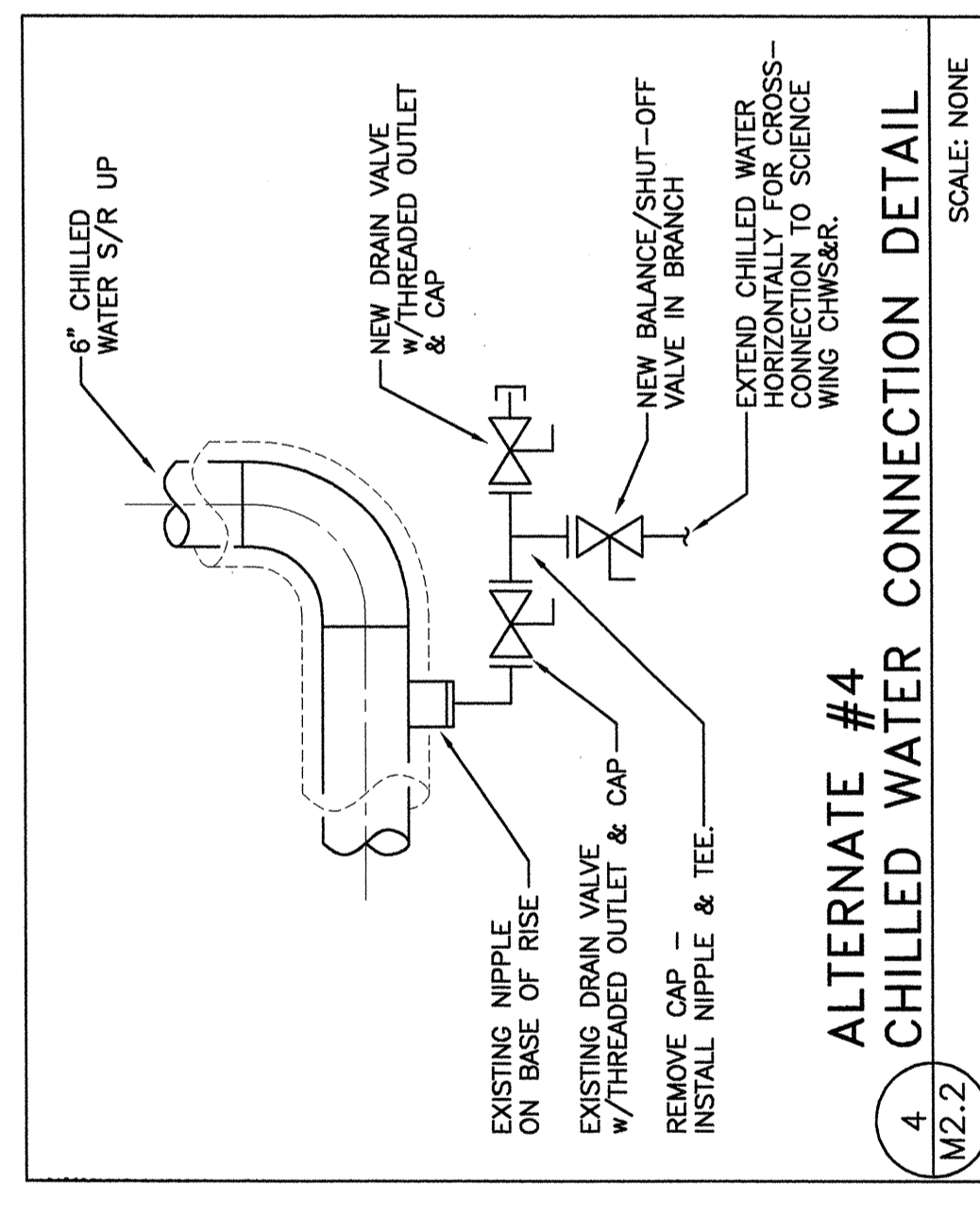
PART PLANS, SECTION, & DETAILS
SCALE: AS NOTED
DRAWN BY: JMC/TV
CHECKED BY: PROJ. ARCH. ENGR. EAP/PEEH
PROJ. NO. RCH
JOB NO. 03049.00
© SYMES MAN & MOORE ASSOCIATES, INC. 2003



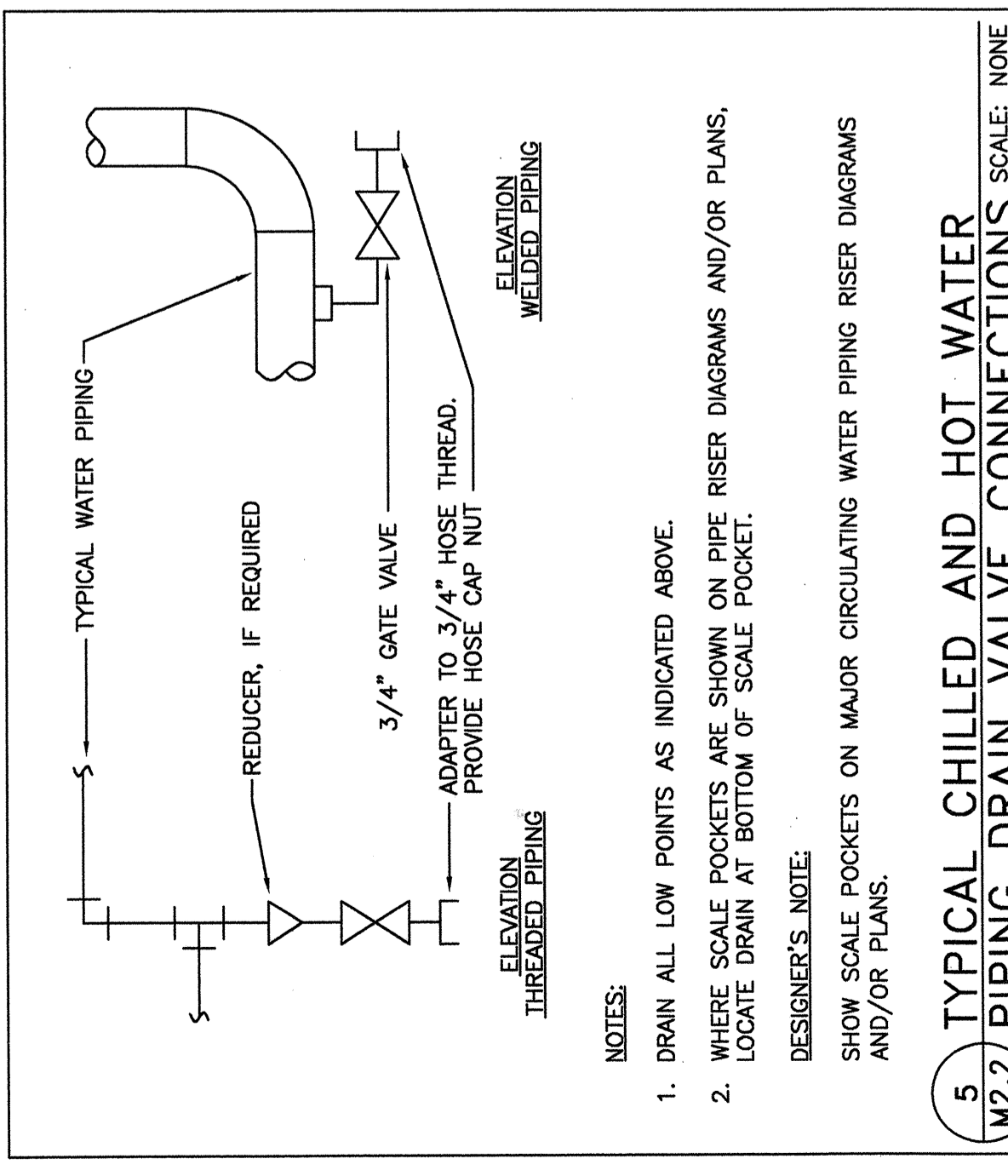
ALTERNATE #3
EXISTING BUILD. FIRST FLOOR PART PLAN
W2.2 1/8" = 1'-0"



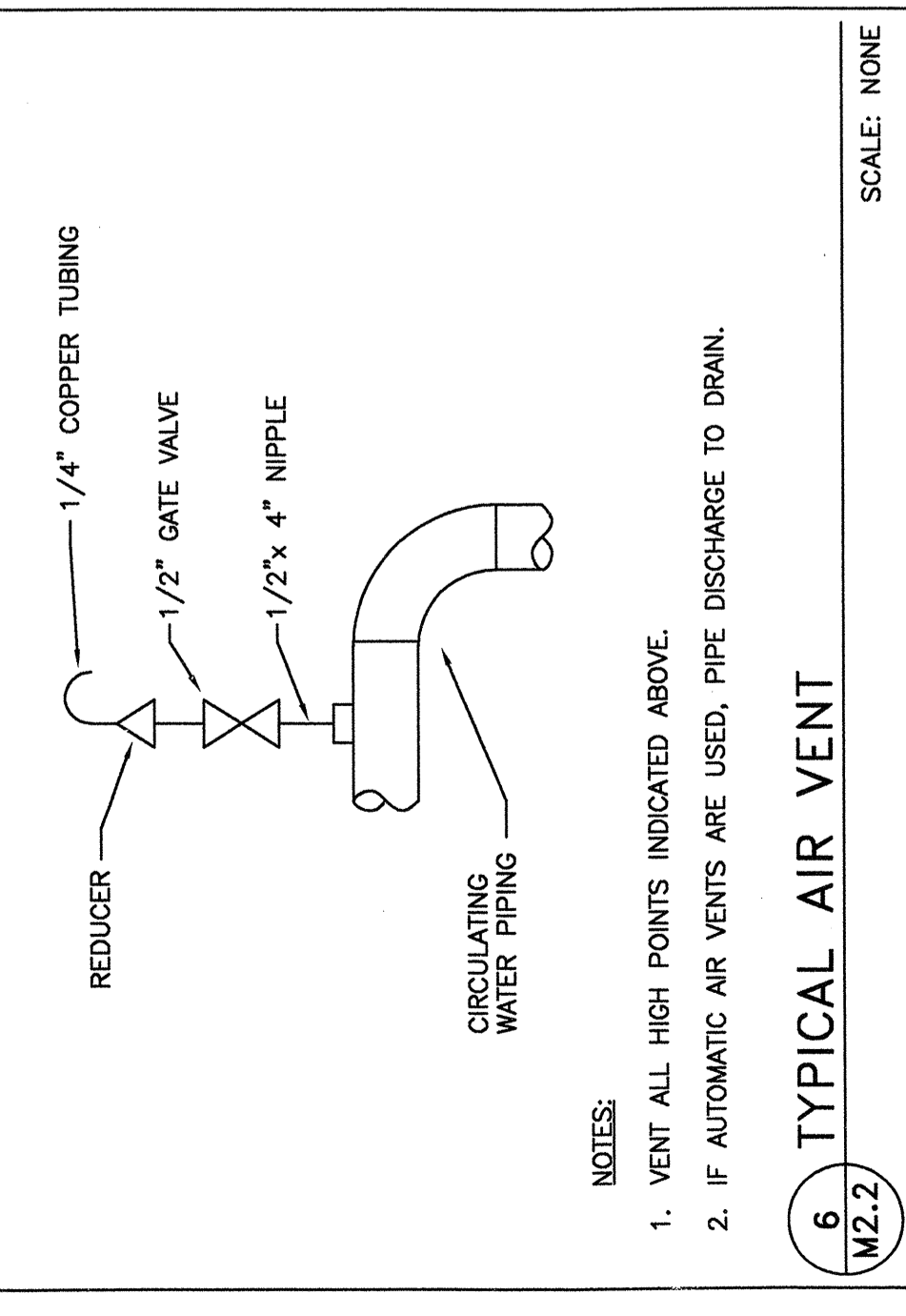
EXISTING PENTHOUSE SECTION
W2.2 1/4" = 1'-0"



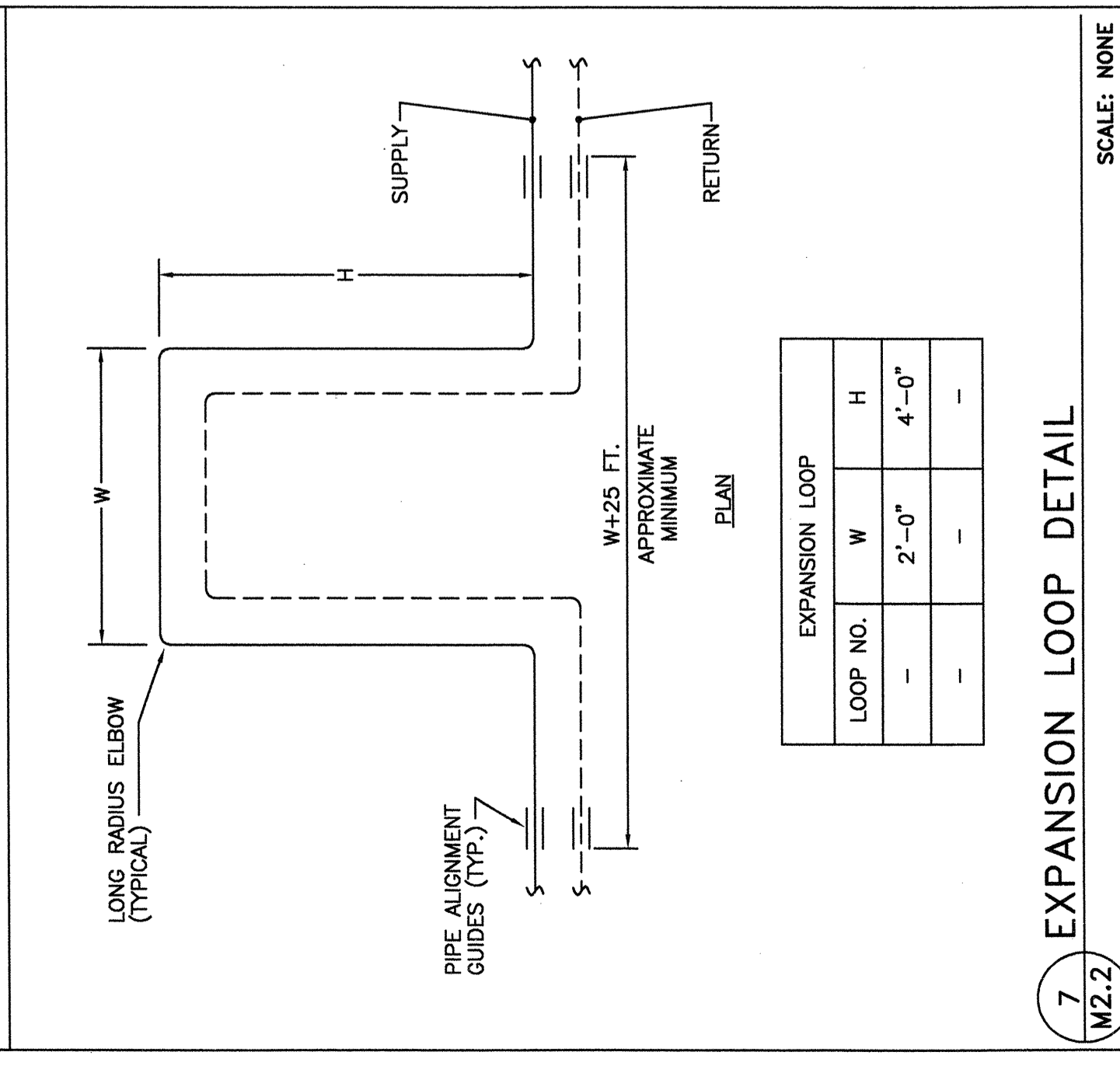
ALTERNATE #4
CHILLED WATER CONNECTION DETAIL
SCALE: NONE
W2.2



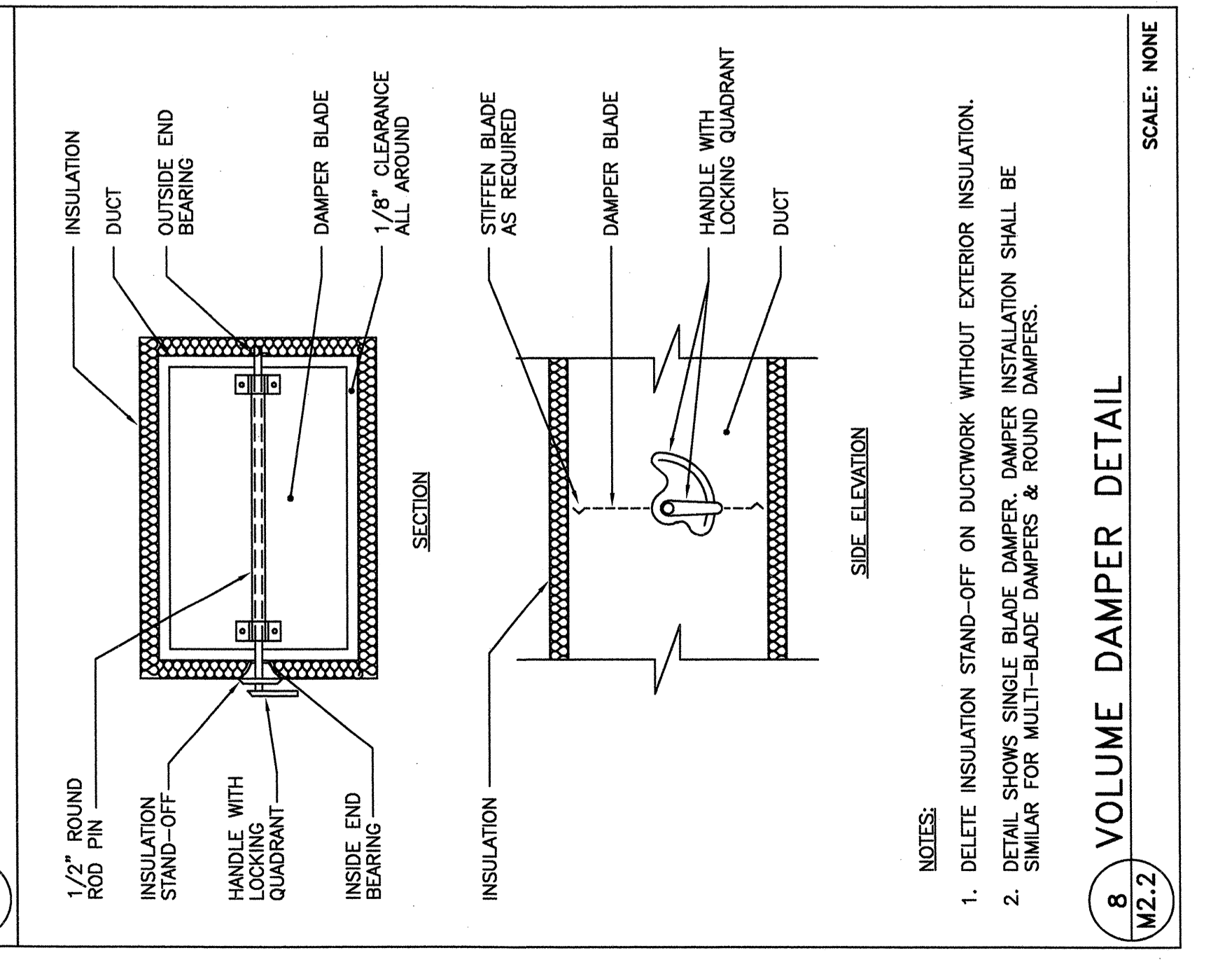
TYPICAL CHILLED AND HOT WATER PIPING DRAIN VALVE CONNECTIONS
SCALE: NONE
W2.2



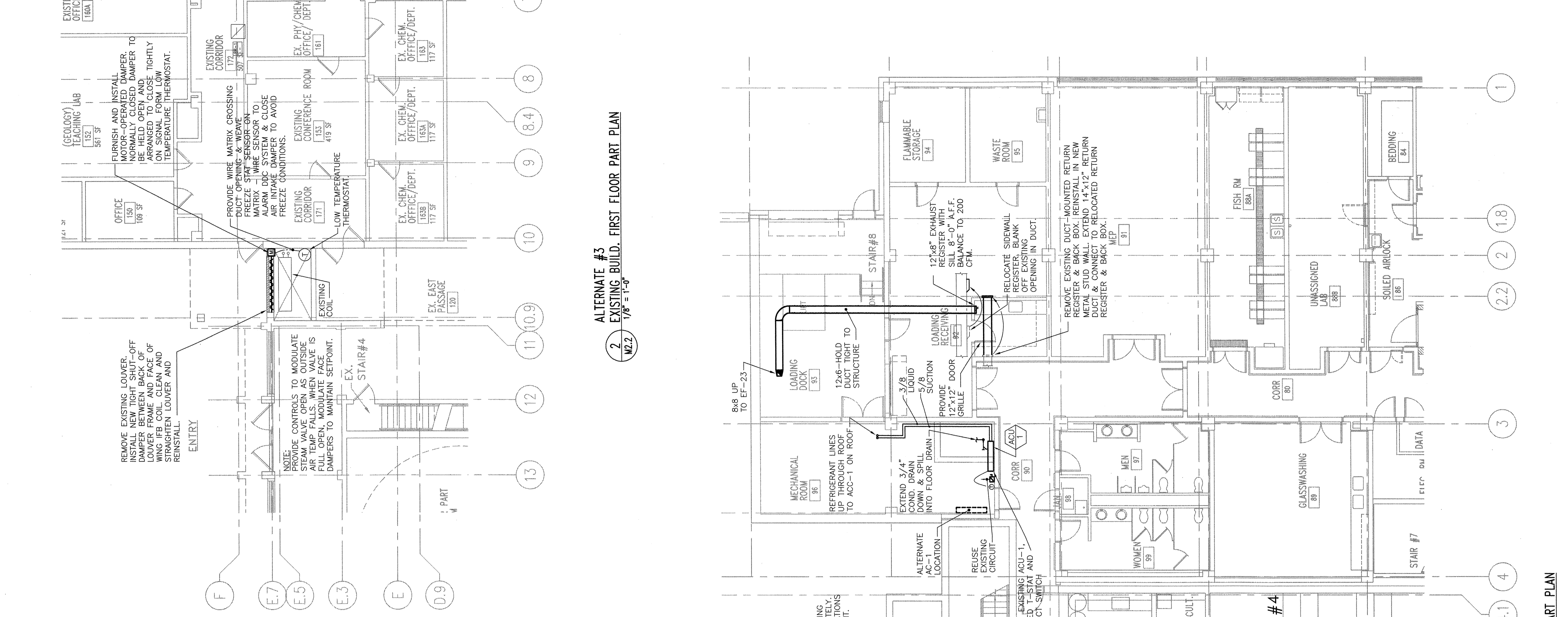
TYPICAL AIR VENT
SCALE: NONE
W2.2



EXPANSION LOOP DETAIL
SCALE: NONE
W2.2



VOLUME DAMPER DETAIL
SCALE: NONE
W2.2



EXISTING BUILD. BASEMENT PART PLAN
W2.2 1/8" = 1'-0"