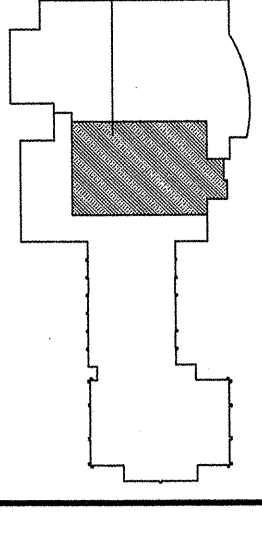




1000 Massachusetts Avenue
Cambridge, Massachusetts 02138
817.547.5400 Fax 817.554.5756



OWNER REVIEW
NAME _____ DATE _____

NO. 02/20/04 CONTRIBUTION
ISSUE DATE

ISSUE NO. _____ DESCRIPTION

UNIVERSITY OF SOUTHERN MAINE
3000 Congress Street
Portland, Maine

PROFESSIONAL SEAL



SECOND FLOOR & PENTHOUSE PLANS

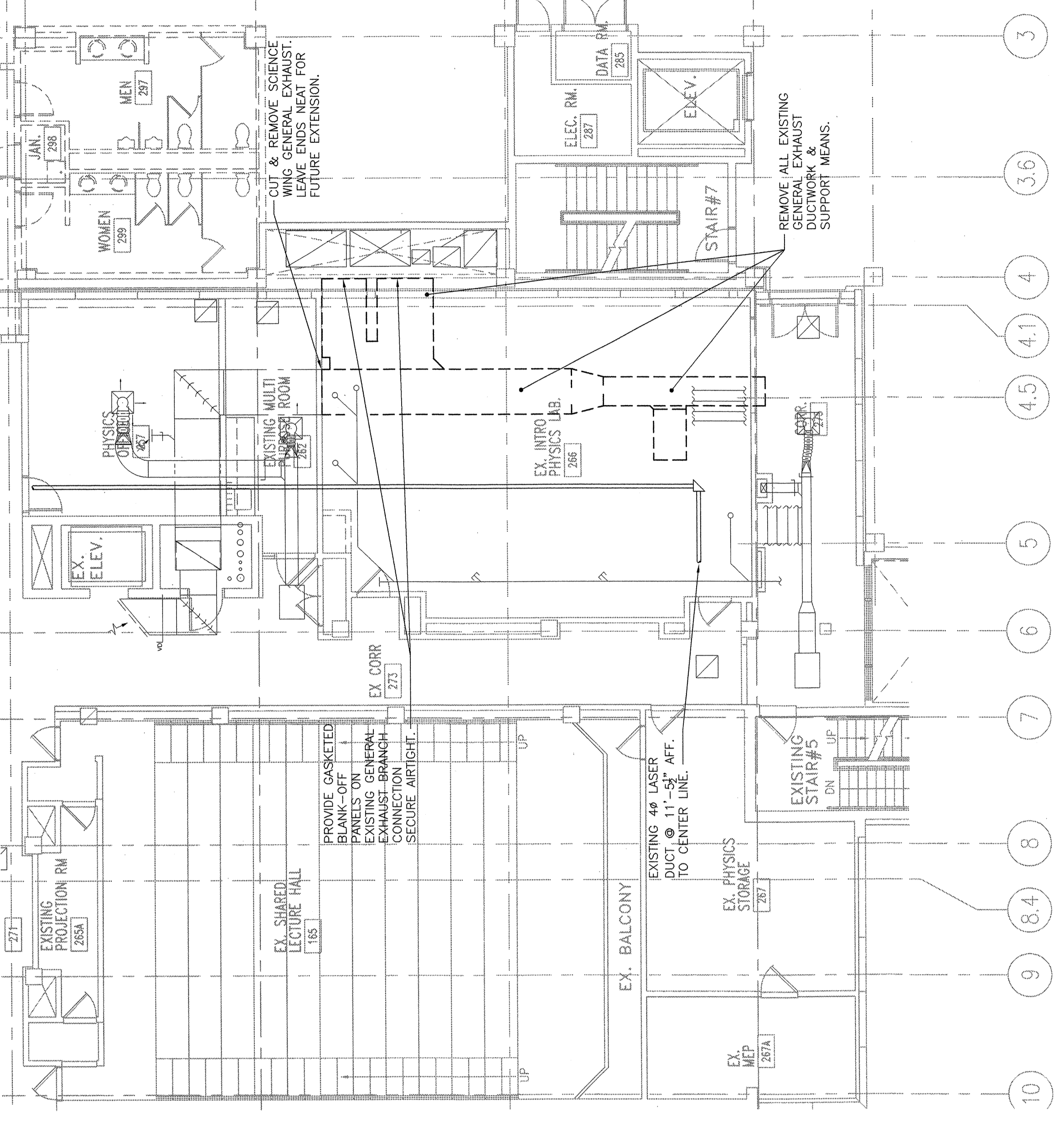
SCALE AS NOTED
DRAWN BY JIM CRY

CHECKED BY PROJ. ARCH./ENGR. EAPPEH RICH

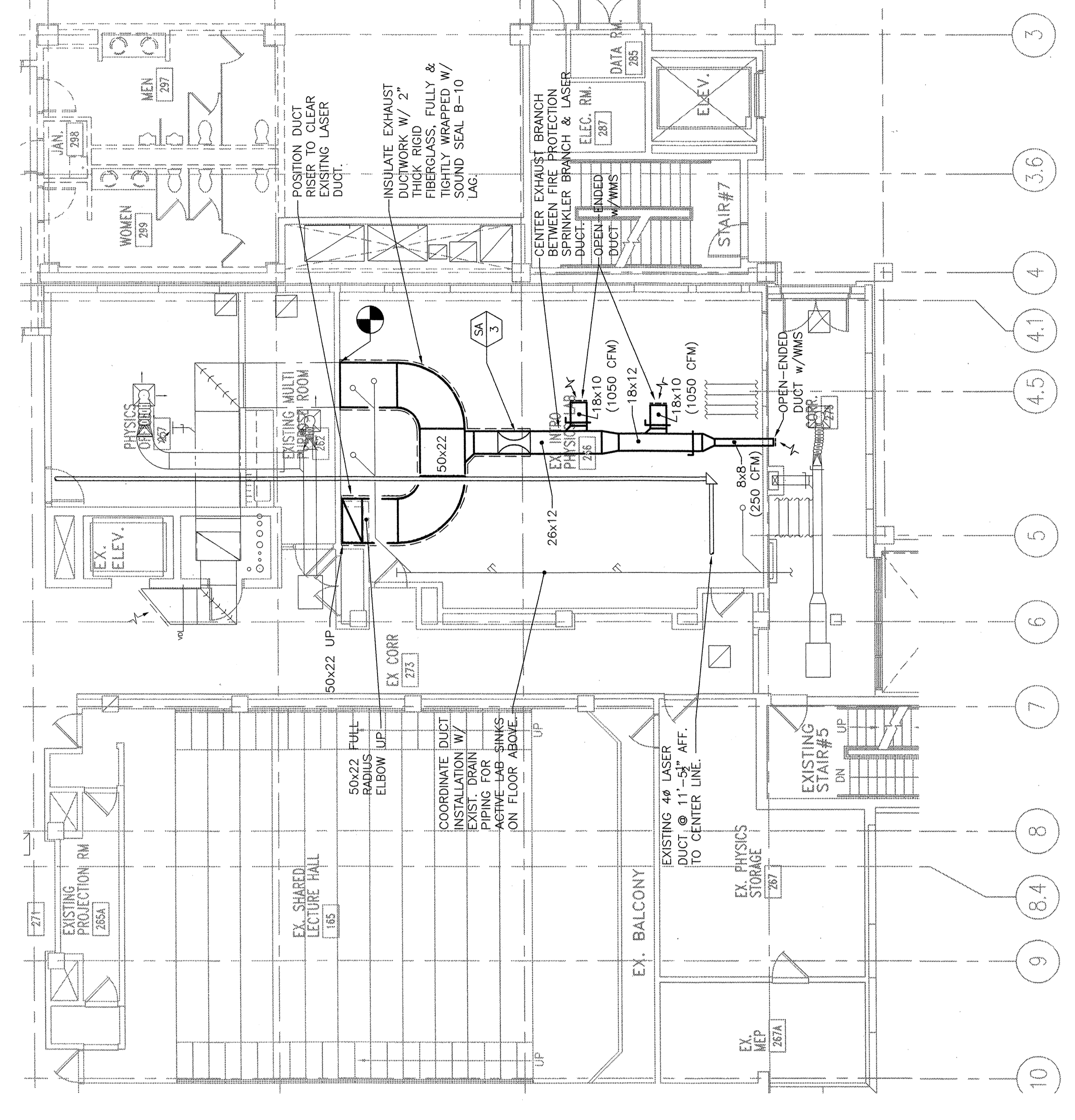
JOB NO. 00049.00

BY SYMMES MANI LOCKEE ASSOCIATES, INC. 200

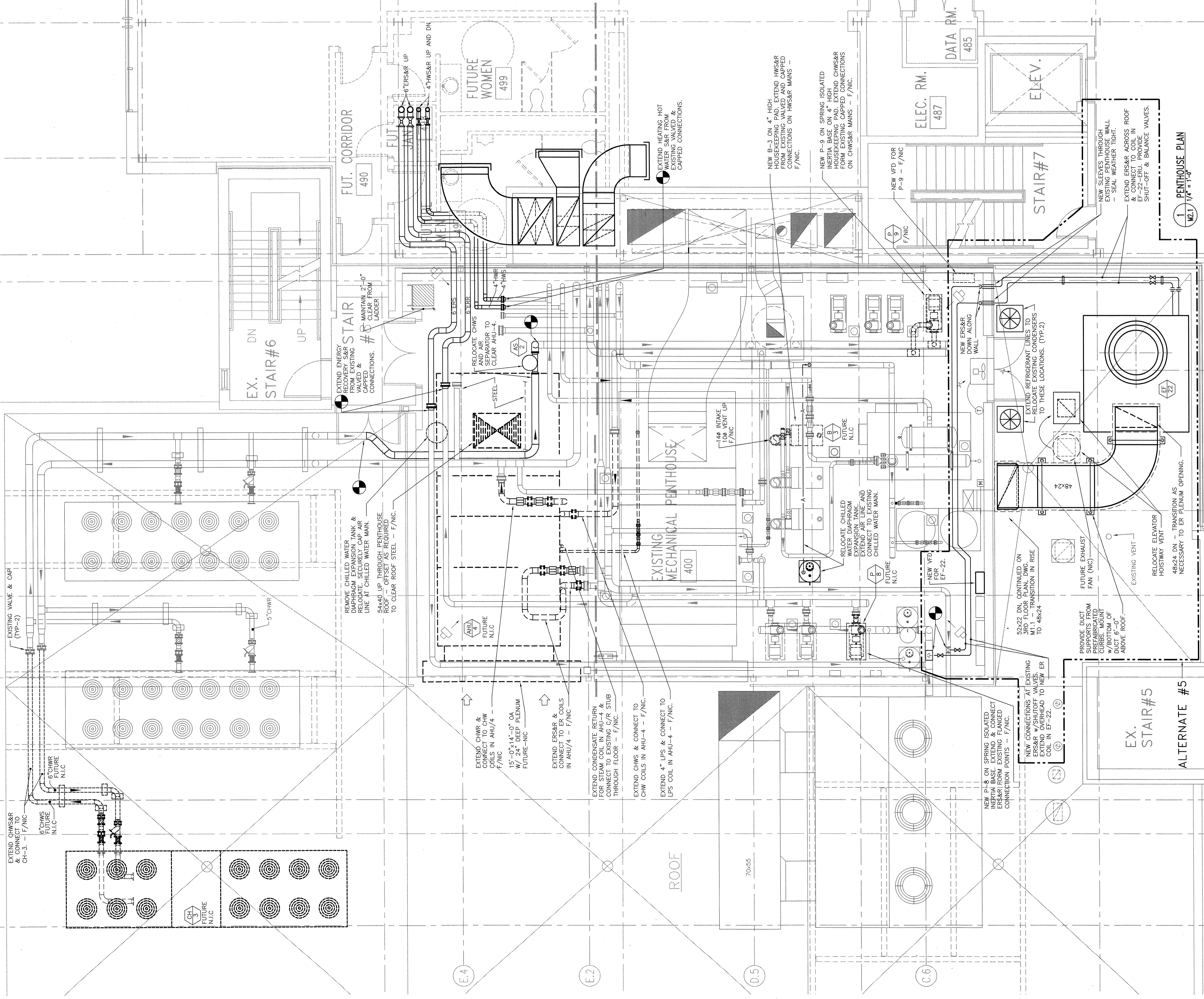
M2.1



ALTERNATE #5
2 SECOND FLOOR PART PLAN - DEMOLITION
W2.1 1/8" = 1'-0"



ALTERNATE #5
3 SECOND FLOOR PART PLAN - RENOVATION
W2.1 1/8" = 1'-0"



ALTERNATE #5
1 PENTHOUSE PLAN
W2.1 1/4" = 1'-0"