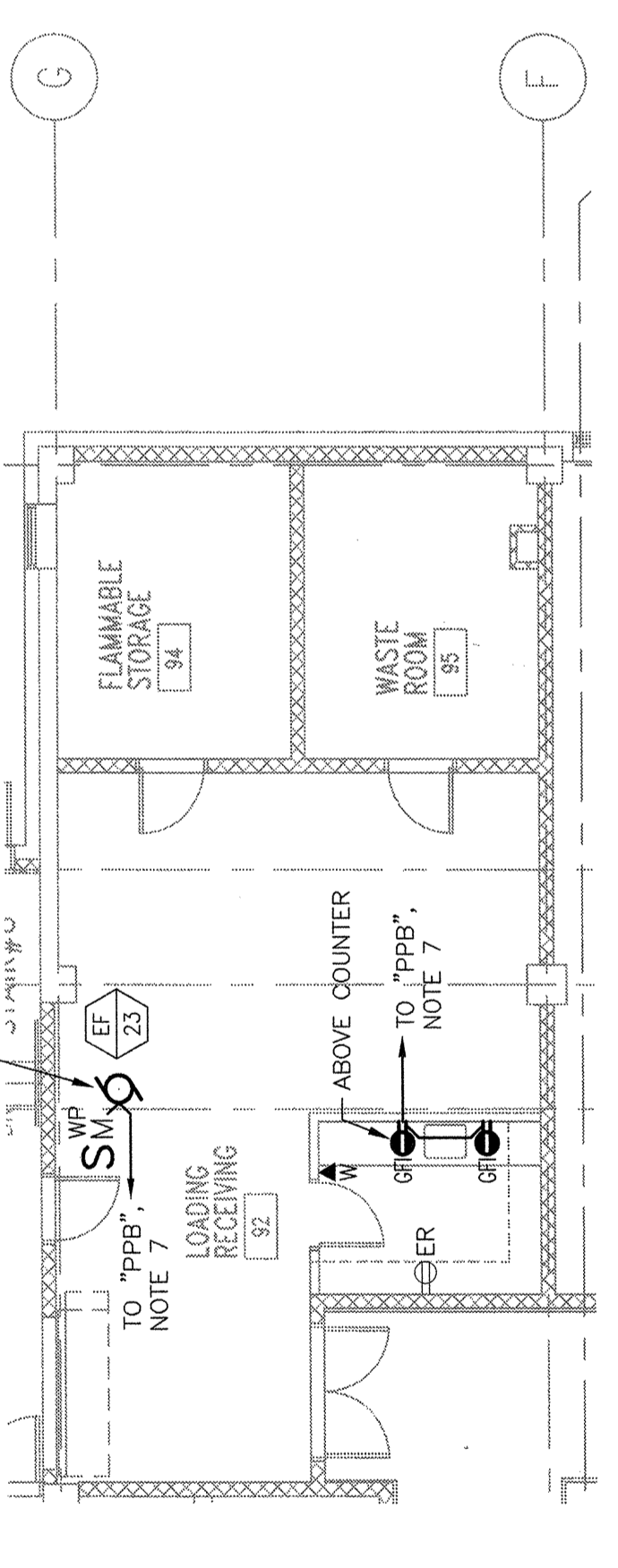
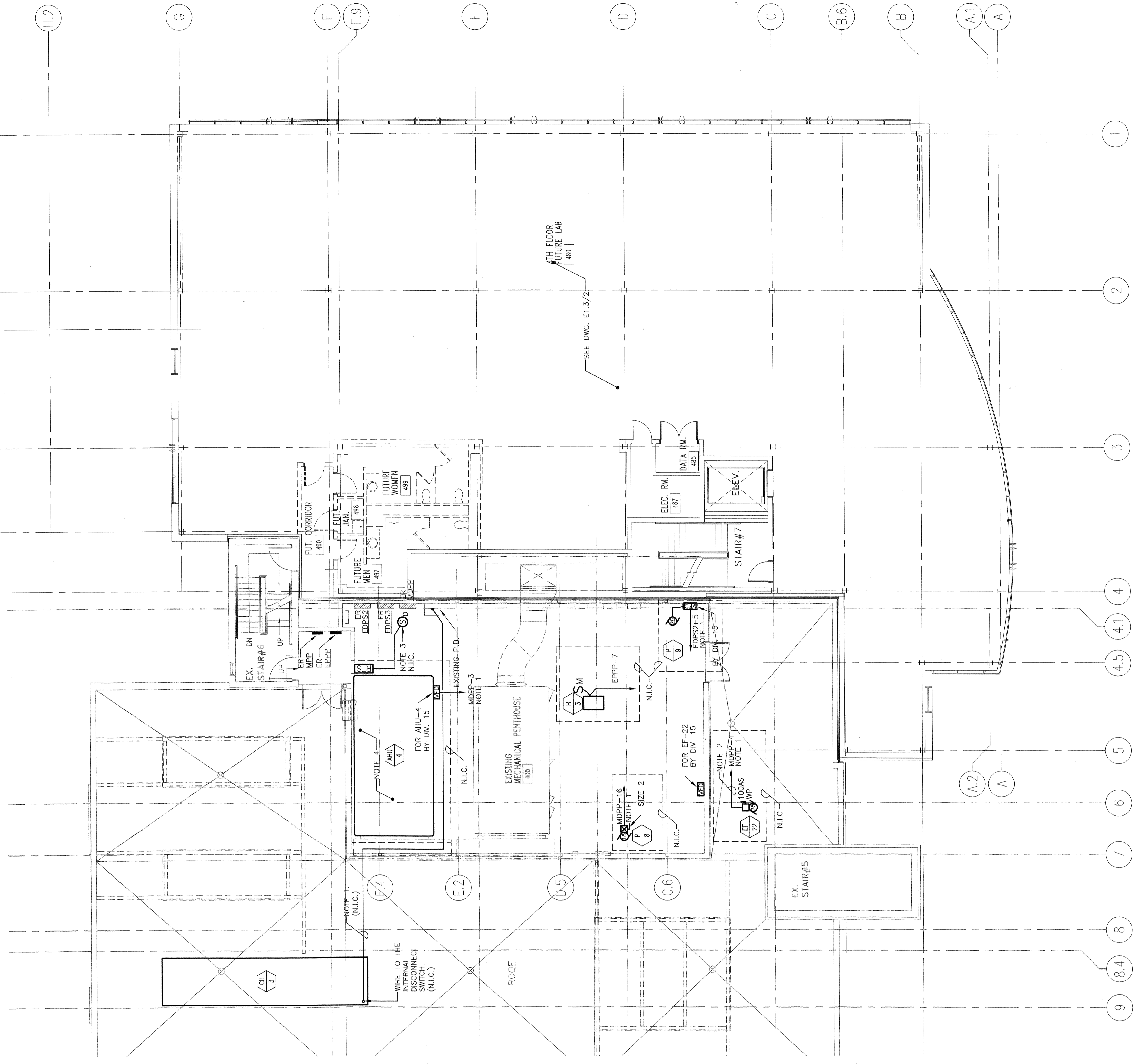
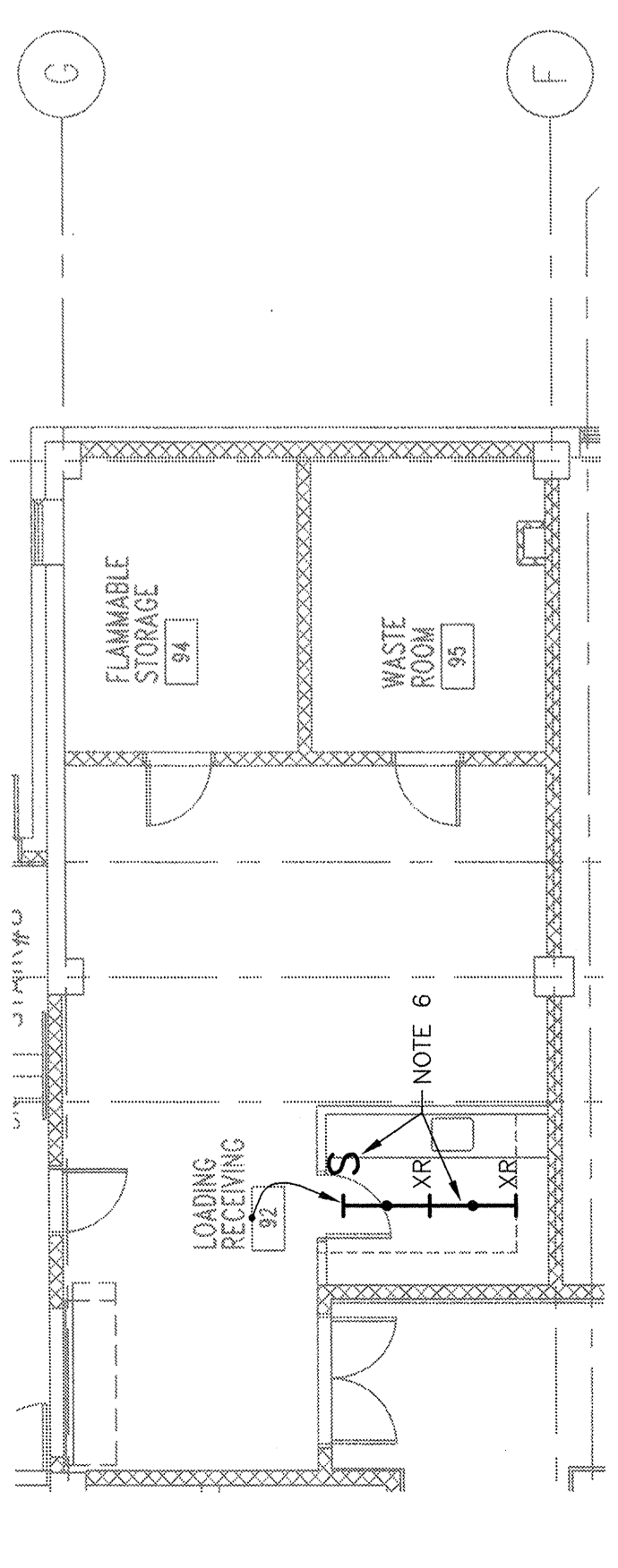


NOTES:

1. PROVIDE NEW CIRCUIT BREAKER IN EXISTING PANEL. FOR CIRCUIT BREAKER AND WIRING. PROVIDE NEW CIRCUIT BREAKER AND WIRING TO BE FIELD COORDINATED WITH MECHANICAL EQUIPMENT AND DUCTWORK.
2. WIRE VIA VFD LOCATED IN PENTHOUSE
3. DUCT THE SHAW'S DETECTOR, FURNISHED AND WIRED BY ELECTRICAL CONTRACTOR, INSTALLED AND WIRING TO BE FIELD COORDINATED WITH MECHANICAL EQUIPMENT AND DUCTWORK TO BUILDING FIRE ALARM SYSTEM.
4. RELOCATE AND RE-WIRE (3) EXISTING PENDANT LIGHTING FIXTURES TO ACCOMMODATE AN INSTALLATION OF AHU-4.
5. CONNECT TO INTEGRAL DISCONNECT SWITCH.
6. RELOCATE TWO EXISTING FLUORESCENT FIXTURES AS INDICATED AND REMIRE TO NEW ROOM SWITCH. RE-USE EXISTING LIGHTING CIRCUIT.
7. WIRE TO SPARE 20A/1P CIRCUIT BREAKER IN EXISTING PANEL "TPB" LOCATED IN ELECTRIC ROOM ON THIS FLOOR.



3 BASEMENT PARTIAL PLAN - POWER
1/8" = 1'-0"



2 BASEMENT PARTIAL PLAN - LIGHTING
1/8" = 1'-0"

1 PENTHOUSE PLAN - NEW POWER
1/8" = 1'-0"