

480V, 3P, 3W  
600A MLO

**PANELBOARD "EDPS2"**  
(EXISTING)

Ckt. No.	Ckt. BKR.	LOAD (CONN.)	HP	KVA	FEEDER	EQUIPMENT
1	80	3	30.0	33.0	3/4" C. - 3P8 & 1P8OND.	EF-2
2	70	3	25.0	28.0	3/4" C. - 3P8 & 1P8OND.	P-3
3	400	3	194.0	212.0	1/2" C. - 3P200kVMI & 1P250D.	CH-2
4	70	3	25	28.0	3/4" C. - 3P8 & 1P8OND.	FAN EF-19
5	70	3	25	28.0	3/4" C. - 3P8 & 1P8OND.	PUMP P-9
6		3				SPACE
7		3				SPACE
8		3				SPACE

N.I.C.

480V, 3P, 3W  
600A MLO

**PANELBOARD "EDPS3"**  
(EXISTING)

Ckt. No.	Ckt. BKR.	LOAD (CONN.)	HP	KVA	FEEDER	EQUIPMENT
1	80	3	30.0	33.0	3/4" C. - 3P8 & 1P8OND.	EF-1
2	80	3	30.0	33.0	3/4" C. - 3P8 & 1P8OND.	EF-3
3	70	3	25.0	28.0	3/4" C. - 3P8 & 1P8OND.	P-1
4	70	3	25.0	28.0	3/4" C. - 3P8 & 1P8OND.	P-2
5	30	3	7.5	9.1	1/2" C. - 3P12 & 1P12OND.	P-4
6	30	3	7.5	9.1	1/2" C. - 3P12 & 1P12OND.	P-5
7	400	3	194.0	212.0	1/2" C. - 3P200kVMI & 1P250D.	CH-1
8	70	3	25	28.0	3/4" C. - 3P8 & 1P8OND.	FAN EF-20
9	70	3	25	28.0	3/4" C. - 3P8 & 1P8OND.	FAN EF-21
10	3	3	10.0	13.0		SPACE (FOR FUTURE EQUIPMENT-EFT)
11	30	3	20	20	1" C. - 3P10 & 1P10OND.	15 KVA TRANSFORMER (PANEL "TPPP")
12		3				SPACE
13		3				SPACE
14		3				SPACE

N.I.C.

277/480V, 3P, 4W  
400A MLO

**PANELBOARD "MDPP"**  
(EXISTING)

S.C.I. = 35.000A  
MECH. PENTHOUSE RM.

Ckt. No.	Ckt. BKR.	LOAD (CONN.)	HP	KVA	FEEDER	EQUIPMENT
1	100	3	50.0	54.0	1" C. - 3P4 & 1P8OND.	AHU-3
2	30	3	10.0	11.0	1" C. - 3P10 & 1P10OND.	15 KVA TRANSFORMER (PANEL "TPPP")
3	125	3	60	64.0	1 1/2" C. - 3P2 & 1P8OND.	AHU-4
4	70	3	25.0	28	3/4" C. - 3P8 & 1P8OND.	EF-22
5	50	3	15.0	17.5	3/4" C. - 3P10 & 1P10OND.	PUMP P-6
6	50	3	15.0	17.5	3/4" C. - 3P10 & 1P10OND.	PUMP P-7
7	20	1	2.0	2.0	1/2" C. - 3P12 & 1P12OND.	LIGHTING
8	15	3	0.5	0.9	1/2" C. - 3P12 & 1P12OND.	EF-4
9	15	3	0.5	0.9	1/2" C. - 3P12 & 1P12OND.	EF-9
10	15	3	0.5	0.9	1/2" C. - 3P12 & 1P12OND.	EF-8
11	15	3	0.5	0.9	1/2" C. - 3P12 & 1P12OND.	EF-10
12	15	3	0.5	0.9	1/2" C. - 3P12 & 1P12OND.	EF-7
13	15	3	0.5	0.9	1/2" C. - 3P12 & 1P12OND.	EF-14
14	15	3	0.5	0.9	1/2" C. - 3P12 & 1P12OND.	EF-15
15	15	3	3.0	4.0	1/2" C. - 3P12 & 1P12OND.	EF-18
16	50	3	15	17.5	3/4" C. - 3P10 & 1P10OND.	PUMP P-8
17		3				SPACE
18	20	1	2.0	2.0	1/2" C. - 3P12 & 1P12OND.	4th & 5th FL. LITS.
19		1				SPACE
20		1				SPACE
21		1				SPACE
22		1				SPACE

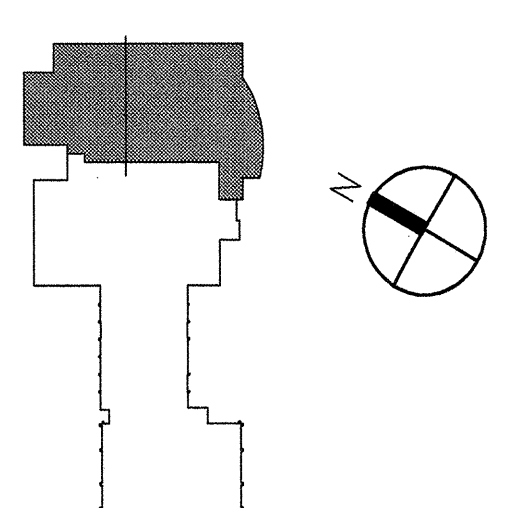
N.I.C.

NOTES:  
1. PROVIDE NEW C/B IN THE EXISTING SPACE.

**LIGHTING FIXTURE SCHEDULE**

FIX. TYPE	MANUFACTURER	CATALOG NO.	VOLTS	NO. OF LAMPS	LAMP TYPE	MOUNTING	DESCRIPTION
A1	CORELITE	NAVIGATOR NBLM318-20-AC	277	3	F032/835	PENDANT F. TO BOTTOM	DIRECT/INDIRECT FIXTURE. 30" UB/70" DOWN. DOUBLE-SWITCHED WITH FLEO-ADJUSTABLE PLASTER. FOR FIXTURE LENGTH SEE PLAN.
E	METALUX	IA-332	277	2	F032/835	CHAN-WTD.	4" W/15" UPLIGHT INDUSTRIAL FIXTURE WITH 15" UPLIGHT
F	doc LIGHTING	68031-2FT24-277-XX	277	2	CF2407/841	WALL	18" DIA. WALL MOUNTED WITH ORAL WHITE DIFFUSER AND PERFORATED SIDE ALUMINUM HOUSING. FINISH BY ARCH.
L	LITHONIA	TWH-250W-277	277	1	250W MH	EXTERIOR WALL	OUTDOOR WALLPACK
L2	LITHONIA	TWH-150W-277-SI-PE	277	1	150W MH	EXTERIOR WALL	OUTDOOR WALLPACK WITH ORAL FUSE AND PHOTOCELL
X	LIGHT PANEL TECHNOLOGIES, LLC	DC4-AC-2A	277	-	ELECTROLUMINESCENT	UNIVERSAL	ONE GRT ALUMINUM EXT. 65W BY SOURCE. GREEN LETTERS, ARROWS AND DOUBLE FACE REEL TO DRAWING

① NUMBER OF LAMPS IN CROSS SECTION.



**LEGEND**

NOTE: ALL SYMBOLS ON THIS LIST ARE NOT NECESSARILY USED ON THIS JOB.

CONDUIT AND WIRE:  
PPH-1-135  
-----  
RACEWAY CONCEALED IN CEILING OR WALLS, OR EXPOSED IN UNFINISHED AREAS.  
-----  
CONDUIT UP.  
-----  
CONDUIT DOWN.

LIGHTING:  
A 1  
A 2  
A 3  
A 4  
A 5  
A 6  
A 7  
A 8  
A 9  
A 10  
A 11  
A 12  
A 13  
A 14  
A 15  
A 16  
A 17  
A 18  
A 19  
A 20  
A 21  
A 22  
A 23  
A 24  
A 25  
A 26  
A 27  
A 28  
A 29  
A 30  
A 31  
A 32  
A 33  
A 34  
A 35  
A 36  
A 37  
A 38  
A 39  
A 40  
A 41  
A 42  
A 43  
A 44  
A 45  
A 46  
A 47  
A 48  
A 49  
A 50  
A 51  
A 52  
A 53  
A 54  
A 55  
A 56  
A 57  
A 58  
A 59  
A 60  
A 61  
A 62  
A 63  
A 64  
A 65  
A 66  
A 67  
A 68  
A 69  
A 70  
A 71  
A 72  
A 73  
A 74  
A 75  
A 76  
A 77  
A 78  
A 79  
A 80  
A 81  
A 82  
A 83  
A 84  
A 85  
A 86  
A 87  
A 88  
A 89  
A 90  
A 91  
A 92  
A 93  
A 94  
A 95  
A 96  
A 97  
A 98  
A 99  
A 100  
A 101  
A 102  
A 103  
A 104  
A 105  
A 106  
A 107  
A 108  
A 109  
A 110  
A 111  
A 112  
A 113  
A 114  
A 115  
A 116  
A 117  
A 118  
A 119  
A 120  
A 121  
A 122  
A 123  
A 124  
A 125  
A 126  
A 127  
A 128  
A 129  
A 130  
A 131  
A 132  
A 133  
A 134  
A 135  
A 136  
A 137  
A 138  
A 139  
A 140  
A 141  
A 142  
A 143  
A 144  
A 145  
A 146  
A 147  
A 148  
A 149  
A 150  
A 151  
A 152  
A 153  
A 154  
A 155  
A 156  
A 157  
A 158  
A 159  
A 160  
A 161  
A 162  
A 163  
A 164  
A 165  
A 166  
A 167  
A 168  
A 169  
A 170  
A 171  
A 172  
A 173  
A 174  
A 175  
A 176  
A 177  
A 178  
A 179  
A 180  
A 181  
A 182  
A 183  
A 184  
A 185  
A 186  
A 187  
A 188  
A 189  
A 190  
A 191  
A 192  
A 193  
A 194  
A 195  
A 196  
A 197  
A 198  
A 199  
A 200  
A 201  
A 202  
A 203  
A 204  
A 205  
A 206  
A 207  
A 208  
A 209  
A 210  
A 211  
A 212  
A 213  
A 214  
A 215  
A 216  
A 217  
A 218  
A 219  
A 220  
A 221  
A 222  
A 223  
A 224  
A 225  
A 226  
A 227  
A 228  
A 229  
A 230  
A 231  
A 232  
A 233  
A 234  
A 235  
A 236  
A 237  
A 238  
A 239  
A 240  
A 241  
A 242  
A 243  
A 244  
A 245  
A 246  
A 247  
A 248  
A 249  
A 250  
A 251  
A 252  
A 253  
A 254  
A 255  
A 256  
A 257  
A 258  
A 259  
A 260  
A 261  
A 262  
A 263  
A 264  
A 265  
A 266  
A 267  
A 268  
A 269  
A 270  
A 271  
A 272  
A 273  
A 274  
A 275  
A 276  
A 277  
A 278  
A 279  
A 280  
A 281  
A 282  
A 283  
A 284  
A 285  
A 286  
A 287  
A 288  
A 289  
A 290  
A 291  
A 292  
A 293  
A 294  
A 295  
A 296  
A 297  
A 298  
A 299  
A 300  
A 301  
A 302  
A 303  
A 304  
A 305  
A 306  
A 307  
A 308  
A 309  
A 310  
A 311  
A 312  
A 313  
A 314  
A 315  
A 316  
A 317  
A 318  
A 319  
A 320  
A 321  
A 322  
A 323  
A 324  
A 325  
A 326  
A 327  
A 328  
A 329  
A 330  
A 331  
A 332  
A 333  
A 334  
A 335  
A 336  
A 337  
A 338  
A 339  
A 340  
A 341  
A 342  
A 343  
A 344  
A 345  
A 346  
A 347  
A 348  
A 349  
A 350  
A 351  
A 352  
A 353  
A 354  
A 355  
A 356  
A 357  
A 358  
A 359  
A 360  
A 361  
A 362  
A 363  
A 364  
A 365  
A 366  
A 367  
A 368  
A 369  
A 370  
A 371  
A 372  
A 373  
A 374  
A 375  
A 376  
A 377  
A 378  
A 379  
A 380  
A 381  
A 382  
A 383  
A 384  
A 385  
A 386  
A 387  
A 388  
A 389  
A 390  
A 391  
A 392  
A 393  
A 394  
A 395  
A 396  
A 397  
A 398  
A 399  
A 400  
A 401  
A 402  
A 403  
A 404  
A 405  
A 406  
A 407  
A 408  
A 409  
A 410  
A 411  
A 412  
A 413  
A 414  
A 415  
A 416  
A 417  
A 418  
A 419  
A 420  
A 421  
A 422  
A 423  
A 424  
A 425  
A 426  
A 427  
A 428  
A 429  
A 430  
A 431  
A 432  
A 433  
A 434  
A 435  
A 436  
A 437  
A 438  
A 439  
A 440  
A 441  
A 442  
A 443  
A 444  
A 445  
A 446  
A 447  
A 448  
A 449  
A 450  
A 451  
A 452  
A 453  
A 454  
A 455  
A 456  
A 457  
A 458  
A 459  
A 460  
A 461  
A 462  
A 463  
A 464  
A 465  
A 466  
A 467  
A 468  
A 469  
A 470  
A 471  
A 472  
A 473  
A 474  
A 475  
A 476  
A 477  
A 478  
A 479  
A 480  
A 481  
A 482  
A 483  
A 484  
A 485  
A 486  
A 487  
A 488  
A 489  
A 490  
A 491  
A 492  
A 493  
A 494  
A 495  
A 496  
A 497  
A 498  
A 499  
A 500  
A 501  
A 502  
A 503  
A 504  
A 505  
A 506  
A 507  
A 508  
A 509  
A 510  
A 511  
A 512  
A 513  
A 514  
A 515  
A 516  
A 517  
A 518  
A 519  
A 520  
A 521  
A 522  
A 523  
A 524  
A 525  
A 526  
A 527  
A 528  
A 529  
A 530  
A 531  
A 532  
A 533  
A 534  
A 535  
A 536  
A 537  
A 538  
A 539  
A 540  
A 541  
A 542  
A 543  
A 544  
A 545  
A 546  
A 547  
A 548  
A 549  
A 550  
A 551  
A 552  
A 553  
A 554  
A 555  
A 556  
A 557  
A 558  
A 559  
A 560  
A 561  
A 562  
A 563  
A 564  
A 565  
A 566  
A 567  
A 568  
A 569  
A 570  
A 571  
A 572  
A 573  
A 574  
A 575  
A 576  
A 577  
A 578  
A 579  
A 580  
A 581  
A 582  
A 583  
A 584  
A 585  
A 586  
A 587  
A 588  
A 589  
A 590  
A 591  
A 592  
A 593  
A 594  
A 595  
A 596  
A 597  
A 598  
A 599  
A 600  
A 601  
A 602  
A 603  
A 604  
A 605  
A 606  
A 607  
A 608  
A 609  
A 610  
A 611  
A 612  
A 613  
A 614  
A 615  
A 616  
A 617  
A 618  
A 619  
A 620  
A 621  
A 622  
A 623  
A 624  
A 625  
A 626  
A 627  
A 628  
A 629  
A 630  
A 631  
A 632  
A 633  
A 634  
A 635  
A 636  
A 637  
A 638  
A 639  
A 640  
A 641  
A 642  
A 643  
A 644  
A 645  
A 646  
A 647  
A 648  
A 649  
A 650  
A 651  
A 652  
A 653  
A 654  
A 655  
A 656  
A 657  
A 658  
A 659  
A 660  
A 661  
A 662  
A 663  
A 664  
A 665  
A 666  
A 667  
A 668  
A 669  
A 670  
A 671  
A 672  
A 673  
A 674  
A 675  
A 676  
A 677  
A 678  
A 679  
A 680  
A 681  
A 682  
A 683  
A 684  
A 685  
A 686  
A 687  
A 688  
A 689  
A 690  
A 691  
A 692  
A 693  
A 694  
A 695  
A 696  
A 697  
A 698  
A 699  
A 700  
A 701  
A 702  
A 703  
A 704  
A 705  
A 706  
A 707  
A 708  
A 709  
A 710  
A 711  
A 712  
A 713  
A 714  
A 715  
A 716  
A 717  
A 718  
A 719  
A 720  
A 721  
A 722  
A 723  
A 724  
A 725  
A 726  
A 727  
A 728  
A 729  
A 730  
A 731  
A 732  
A 733  
A 734  
A 735  
A 736  
A 737  
A 738  
A 739  
A 740  
A 741  
A 742  
A 743  
A 744  
A 745  
A 746  
A 747  
A 748  
A 749  
A 750  
A 751  
A 752  
A 753  
A 754  
A 755  
A 756  
A 757  
A 758  
A 759  
A 760  
A 761  
A 762  
A 763  
A 764  
A 765  
A 766  
A 767  
A 768  
A 769  
A 770  
A 771  
A 772  
A 773  
A 774  
A 775  
A 776  
A 777  
A 778  
A 779  
A 780  
A 781  
A 782  
A 783  
A 784  
A 785  
A 786  
A 787  
A 788  
A 789  
A 790  
A 791  
A 792  
A 793  
A 794  
A 795  
A 796  
A 797  
A 798  
A 799  
A 800  
A 801  
A 802  
A 803  
A 804  
A 805  
A 806  
A 807  
A 808  
A 809  
A 810  
A 811  
A 812  
A 813  
A 814  
A 815  
A 816  
A 817  
A 818  
A 819  
A 820  
A 821  
A 822  
A 823  
A 824  
A 825  
A 826  
A 827  
A 828  
A 829  
A 830  
A 831  
A 832  
A 833  
A 834  
A 835  
A 836  
A 837  
A 838  
A 839  
A 840  
A 841  
A 842  
A 843  
A 844  
A 845  
A 846  
A 847  
A 848  
A 849  
A 850  
A 851  
A 852  
A 853  
A 854  
A 855  
A 856  
A 857  
A 858  
A 859  
A 860  
A 861  
A 862  
A 863  
A 864  
A 865  
A 866  
A 867  
A 868  
A 869  
A 870  
A 871  
A 872  
A 873  
A 874  
A 875  
A 876  
A 877  
A 878  
A 879  
A 880  
A 881  
A 882  
A 883  
A 884  
A 885  
A 886  
A 887  
A 888  
A 889  
A 890  
A 891  
A 892  
A 893  
A 894  
A 895  
A 896  
A 897  
A 898  
A 899  
A 900  
A 901  
A 902  
A 903  
A 904  
A 905  
A 906  
A 907  
A 908  
A 909  
A 910  
A 911  
A 912  
A 913  
A 914  
A 915  
A 916  
A 917  
A 918  
A 919  
A 920  
A 921  
A 922  
A 923  
A 924  
A 925  
A 926  
A 927  
A 928  
A 929  
A 930  
A 931  
A 932  
A 933  
A 934  
A 935  
A 936  
A 937  
A 938  
A 939  
A 940  
A 941  
A 942  
A 943  
A 944  
A 945  
A 946  
A 947  
A 948  
A 949  
A 950  
A 951  
A 952  
A 953  
A 954  
A 955  
A 956  
A 957  
A 958  
A 959  
A 960  
A 961  
A 962  
A 963  
A 964  
A 965  
A 966  
A 967  
A 968  
A 969  
A 970  
A 971  
A 972  
A 973  
A 974  
A 975  
A 976  
A 977  
A 978  
A 979  
A 980  
A 981  
A 982  
A 983  
A 984  
A 985  
A 986  
A 987  
A 988  
A 989  
A 990  
A 991  
A 992  
A 993  
A 994  
A 995  
A 996  
A 997  
A 998  
A 999  
A 1000

**LEGEND**

NOTE: ALL SYMBOLS ON THIS LIST ARE NOT NECESSARILY USED ON THIS JOB.

CONDUIT AND WIRE:  
PPH-1-135  
-----  
RACEWAY CONCEALED IN CEILING OR WALLS, OR EXPOSED IN UNFINISHED AREAS.  
-----  
CONDUIT UP.  
-----  
CONDUIT DOWN.

LIGHTING:  
A 1  
A 2  
A 3  
A 4  
A 5  
A 6  
A 7  
A 8  
A 9  
A 10  
A 11  
A 12  
A 13  
A 14  
A 15  
A 16  
A 17  
A 18  
A 19  
A 20  
A 21  
A 22  
A 23  
A 24  
A 25  
A 26  
A 27  
A 28  
A 29  
A 30  
A 31  
A 32  
A 33  
A 34  
A 35  
A 36  
A 37  
A 38  
A 39  
A 40  
A