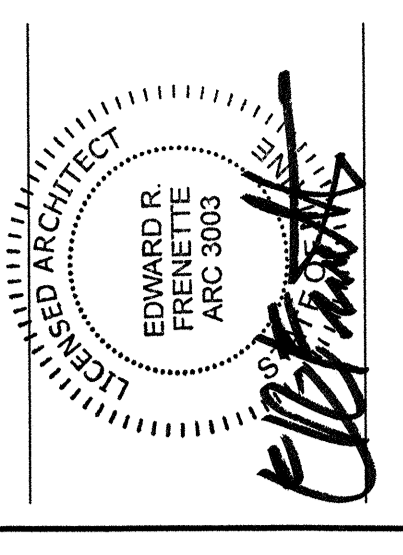


NO.	DATE	DESCRIPTION
1	5.12.04	ADDENDUM 4
2	02.20.04	CONSTRUCTION

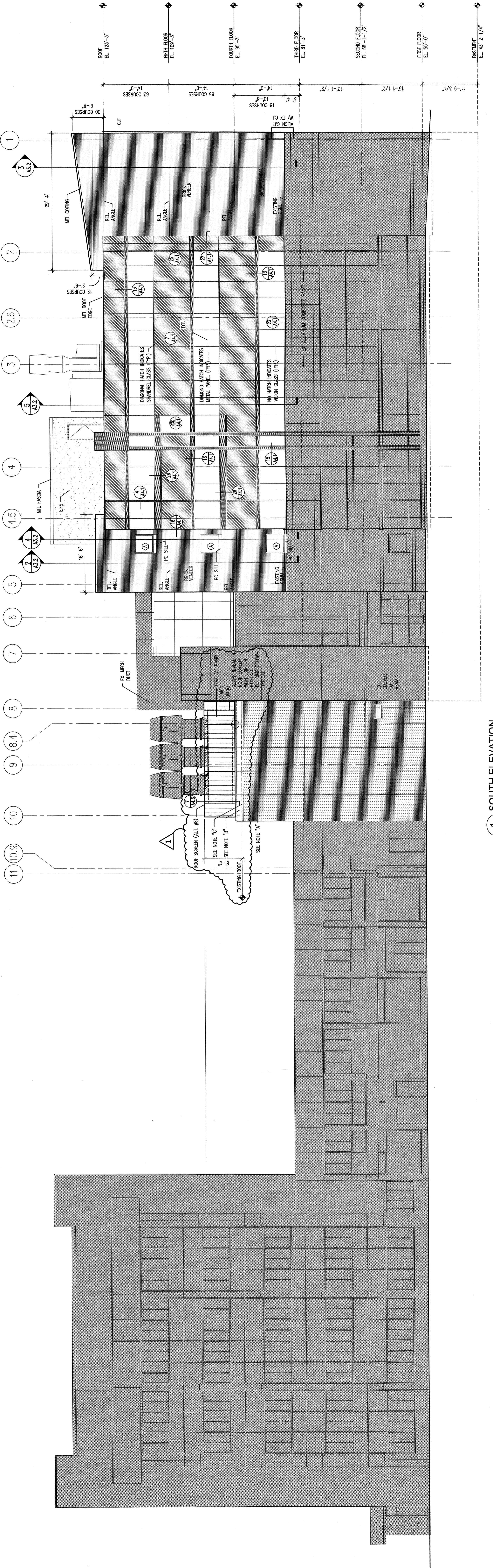
UNIVERSITY OF  
SOUTHERN MAINE  
SCHOOL OF ARCHITECTURE AND DESIGN  
70 Fairbanks Street  
Portland, Maine



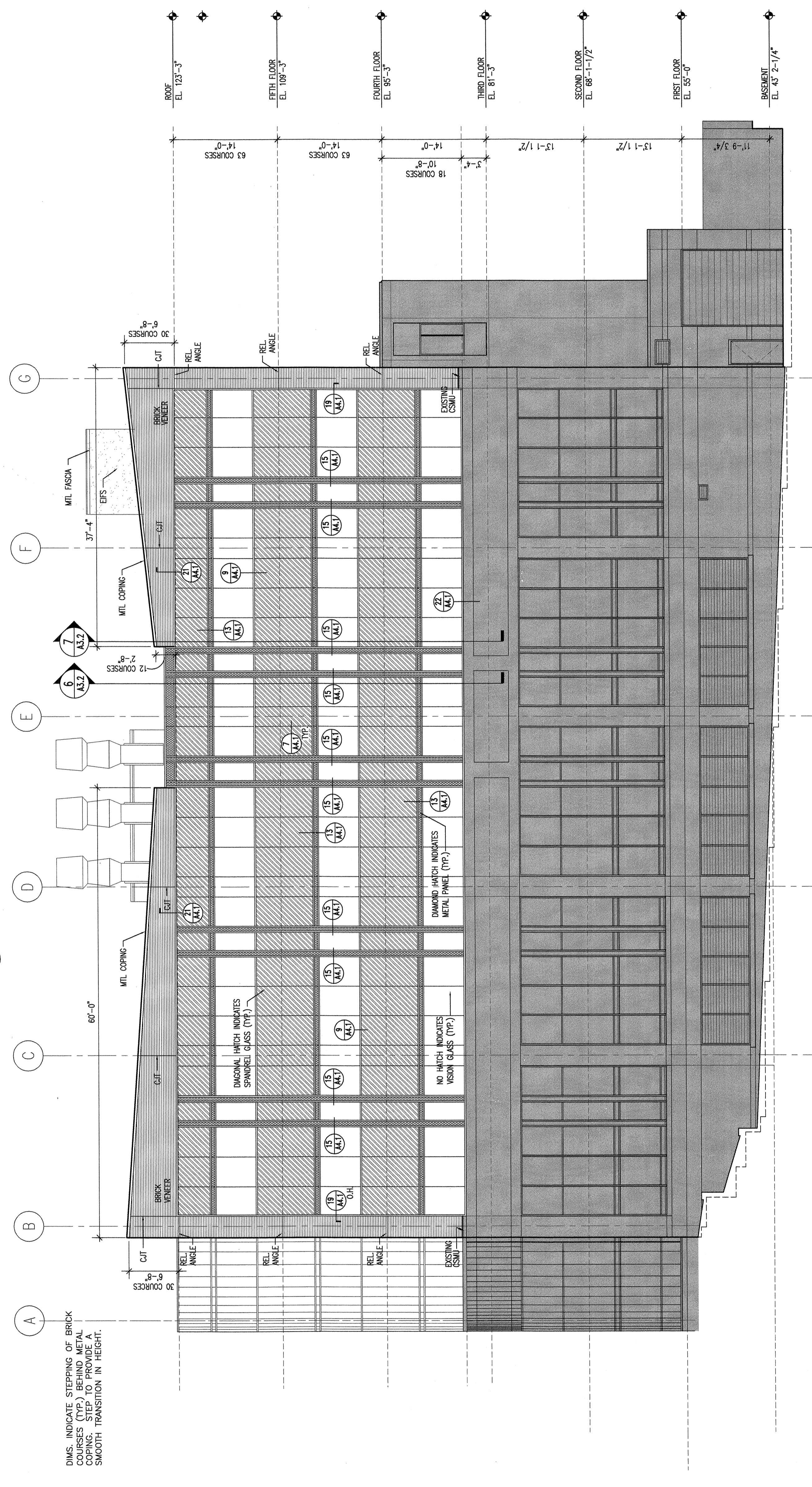
**EXTERIOR ELEVATIONS**

SCALE 1/8" = 1'-0"  
DRAWN BY JJ  
CHECKED BY PROJ ARCH/ENGR. EAP  
PROJ MGR. RCH  
JOB NO. 0549.00  
© SYMMES, MAIN & MOORE ASSOCIATES, INC. 2003

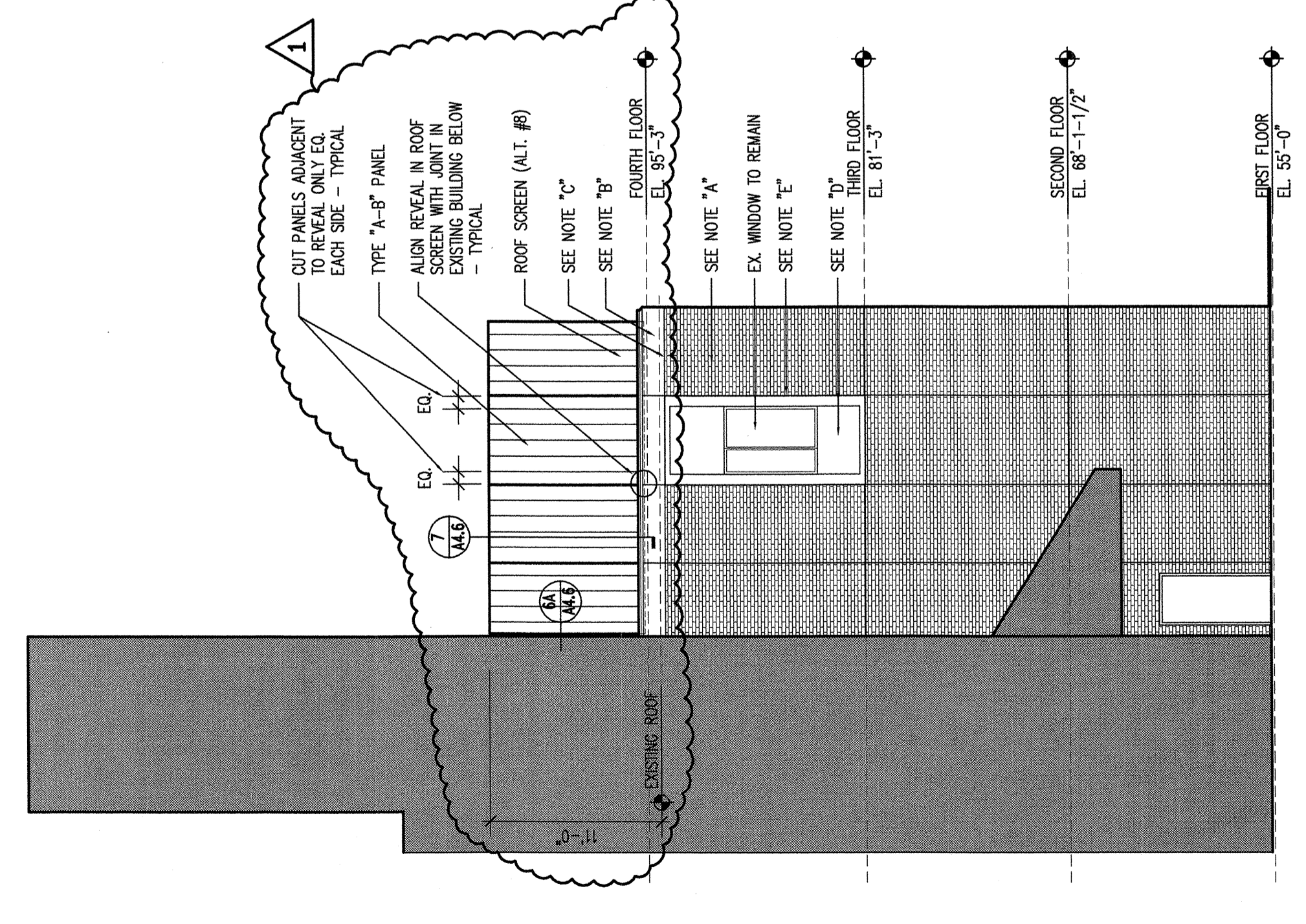
**A2.1**



**1 SOUTH ELEVATION**  
A2.1 SCALE 1/8" = 1'-0"



**2 EAST ELEVATION**  
A2.1 SCALE 1/8" = 1'-0"



**3 PARTIAL EAST ELEVATION OF EX. SCIENCE WING**  
A2.1 SCALE 1/8" = 1'-0"

**EXTERIOR ELEVATION (S&E):**  
CSM: CAST STONE MASONRY UNIT  
EXISTING TO REMAIN UNLESS NOTED  
P.C. SILL: PRE-CAST CONCRETE SILL

**GENERAL NOTES:**  
1. ALL MULLIONS WIDTHS AND MULLION COVERS SHALL MATCH EXISTING IN COLOR AND FINISH, AS SPECIFIED.  
2. ALIGN ALL VERTICAL MULLIONS EXACTLY WITH EXISTING MULLIONS BELOW.  
3. CAP ALL EXPOSED ENDS OF MULLION CAPS. STEP TOP OF MASONRY VENEER AND CUT BRICKS AS NECESSARY TO ACHIEVE SLOPE OF PARAPETS AS INDICATED BEHIND METAL COPING.

**NOTES RELATIVE TO ALTERNATES # AND #7:**  
NOTE "A": "BRICK" HATCH INDICATES EXTENT OF THIN BRICK SYSTEM APPLIED OVER EXISTING EXTENT OF BRICK-COLORED CONCRETE COATING APPLIED OVER EXISTING CONCRETE WALLS. AS SPECIFIED AND PROVIDE ASSOCIATED SEALANTS AND FLASHINGS ONLY AS WORK OF ALTERNATE # 6 OR #7).  
NOTE "B": EXISTING CONCRETE SHALL REMAIN UNLESS NOTED OTHERWISE. FINISH WITH THIN BRICK SYSTEM SURFACE FOR ALTERNATES # AND #7).  
NOTE "C": ALTERNATE #7 ONLY PROVIDE LEAD COATED COPPER CAP FLASHING AT TOP OF THIN-BRICK SYSTEM. RAKE OUT TOP SPRING-Lock FLASHING 2" MINIMUM INTO JOINT. SECURE WITH LEAD WEDGES, AND APPLY 3" MIN FACE DIMENSION DRIP FORMED BY A BACKBEND, AND SHALL BE HELD IN POSITION BY CONCEALED CLATS.  
NOTE "D": DO NOT APPLY CONCRETE COATING TO (OR WITHIN) PROJECTING WINDOW NOT APPLY THIN-BRICK SYSTEM TO THESE SURFACE FOR ALTERNATE #7.  
NOTE "E": FOR ALTERNATE #7, BUTT END OF THIN-BRICK SYSTEM AGAINST PROJECTING SURFACE. SURROUNDING WITH A 3/8" TO 1/2" SEALANT JOINT.