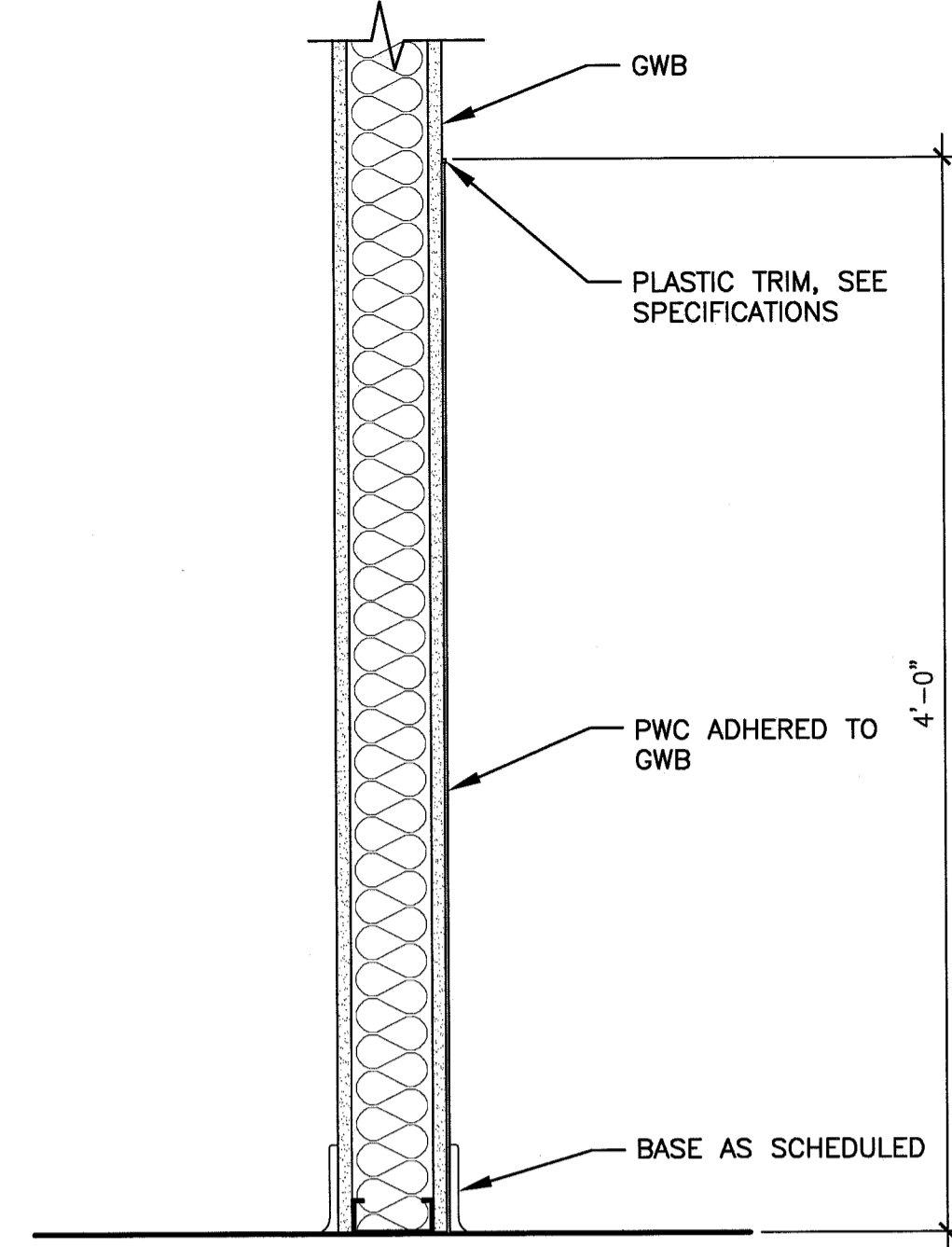


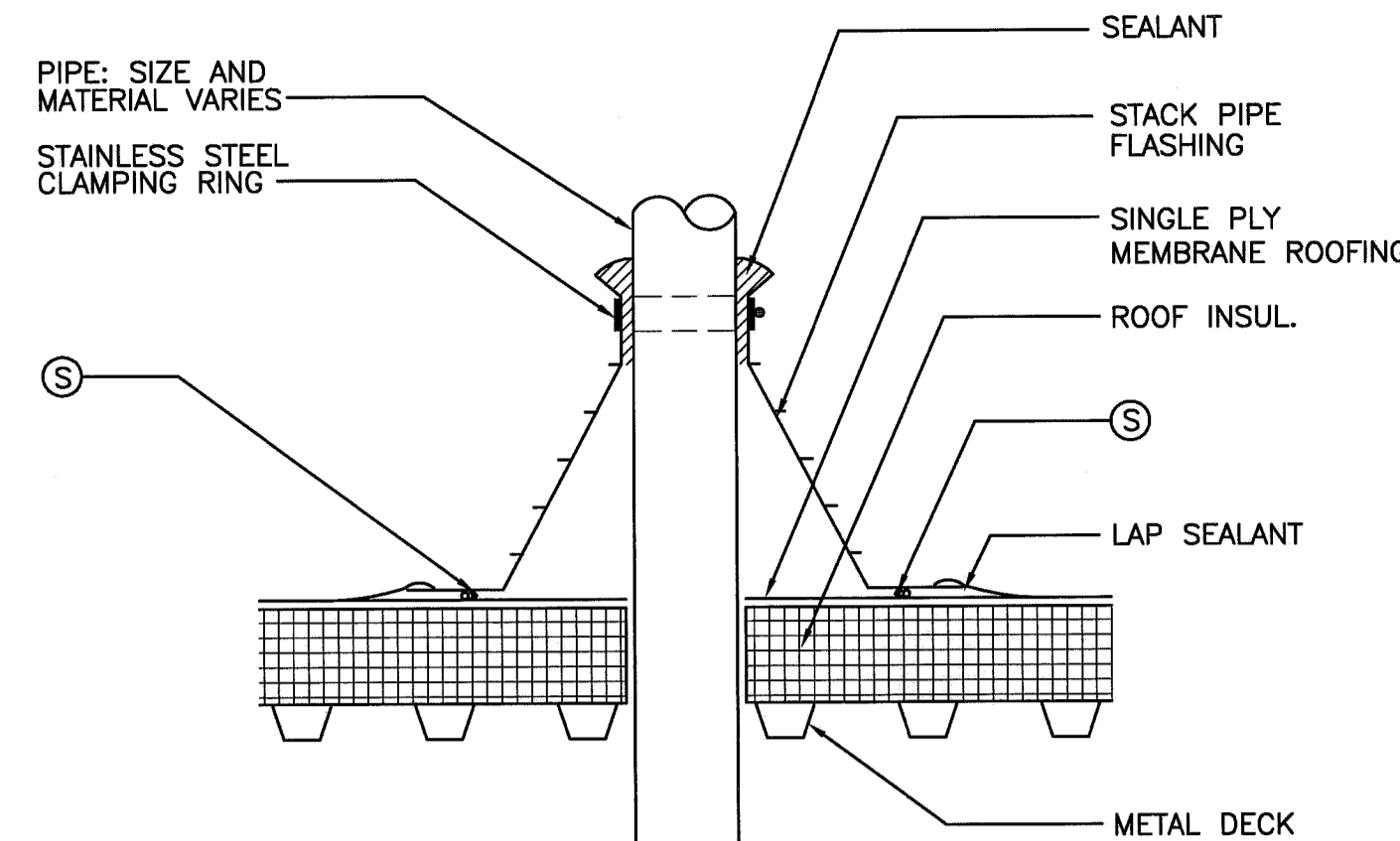
G1 CASEWORK DETAIL

1-1/2"=1'-0"



H5 WALL PROTECTION DETAIL

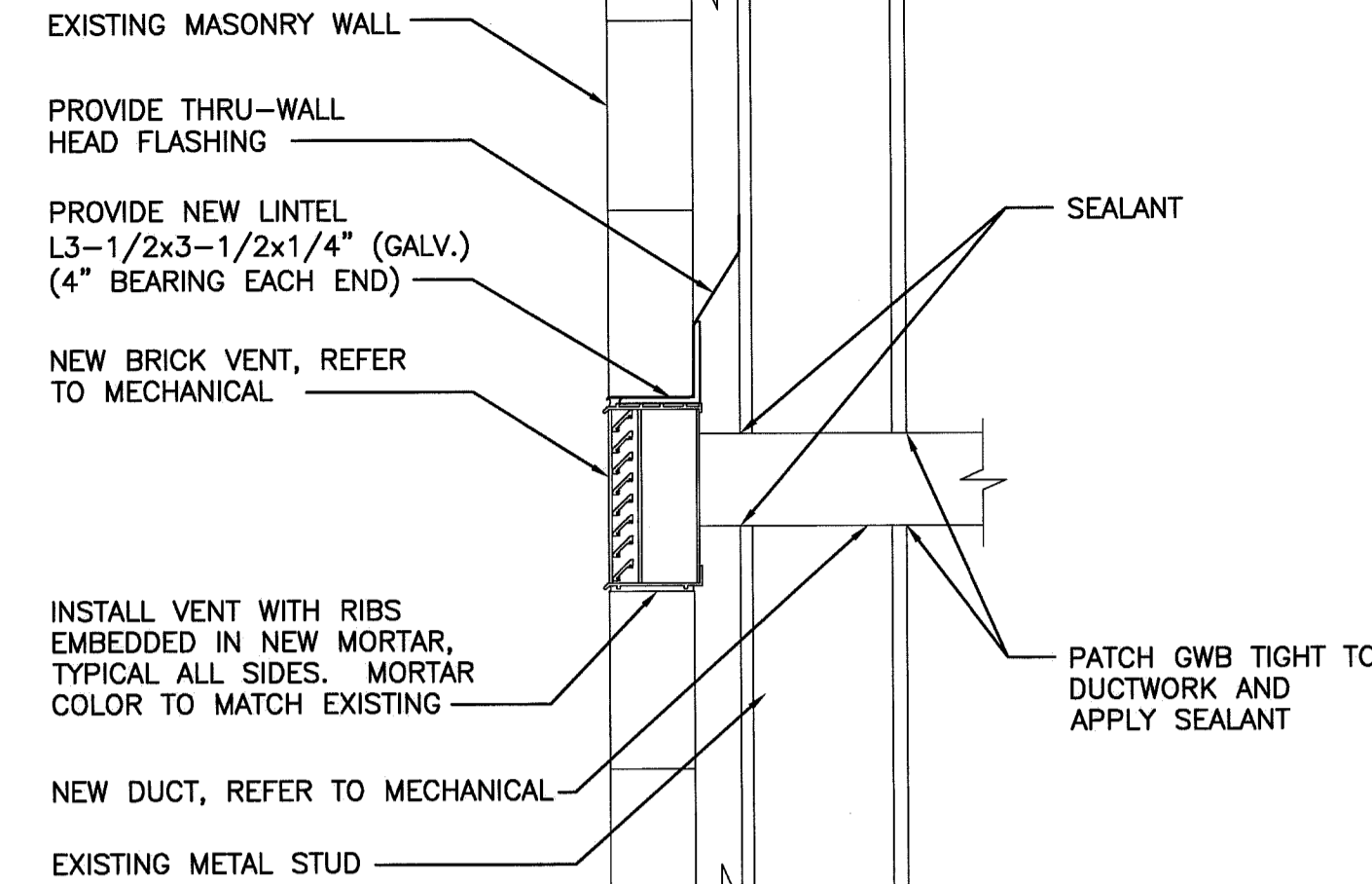
1-1/2"=1'-0"



NOTE: VERIFY ALL MATERIALS USED ARE COMPATIBLE WITH EXISTING ROOFING SYSTEM.

H9 PIPE PENETRATION DETAIL

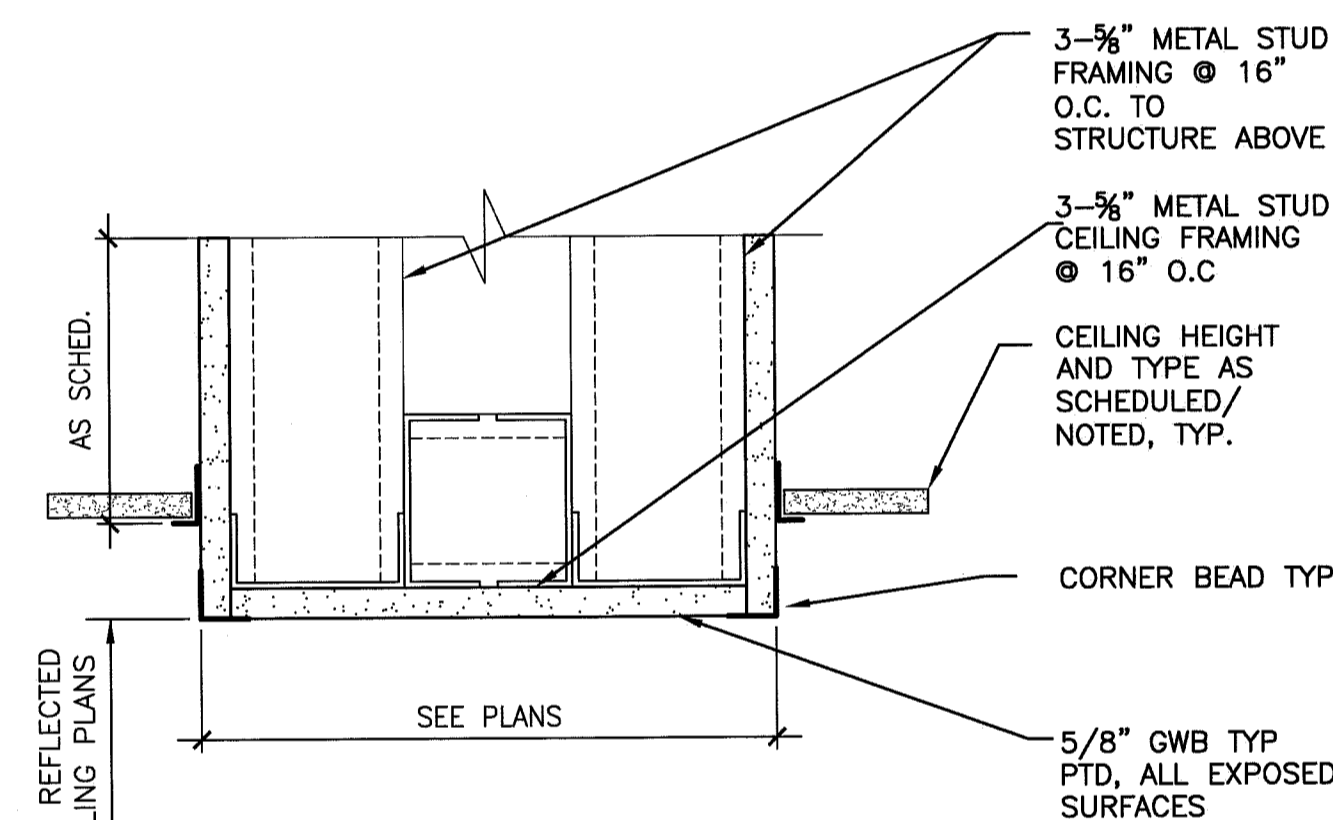
1-1/2"=1'-0"



NOTE: VERIFY SCOPE WITH ARCHITECT PRIOR TO INSTALLATION.

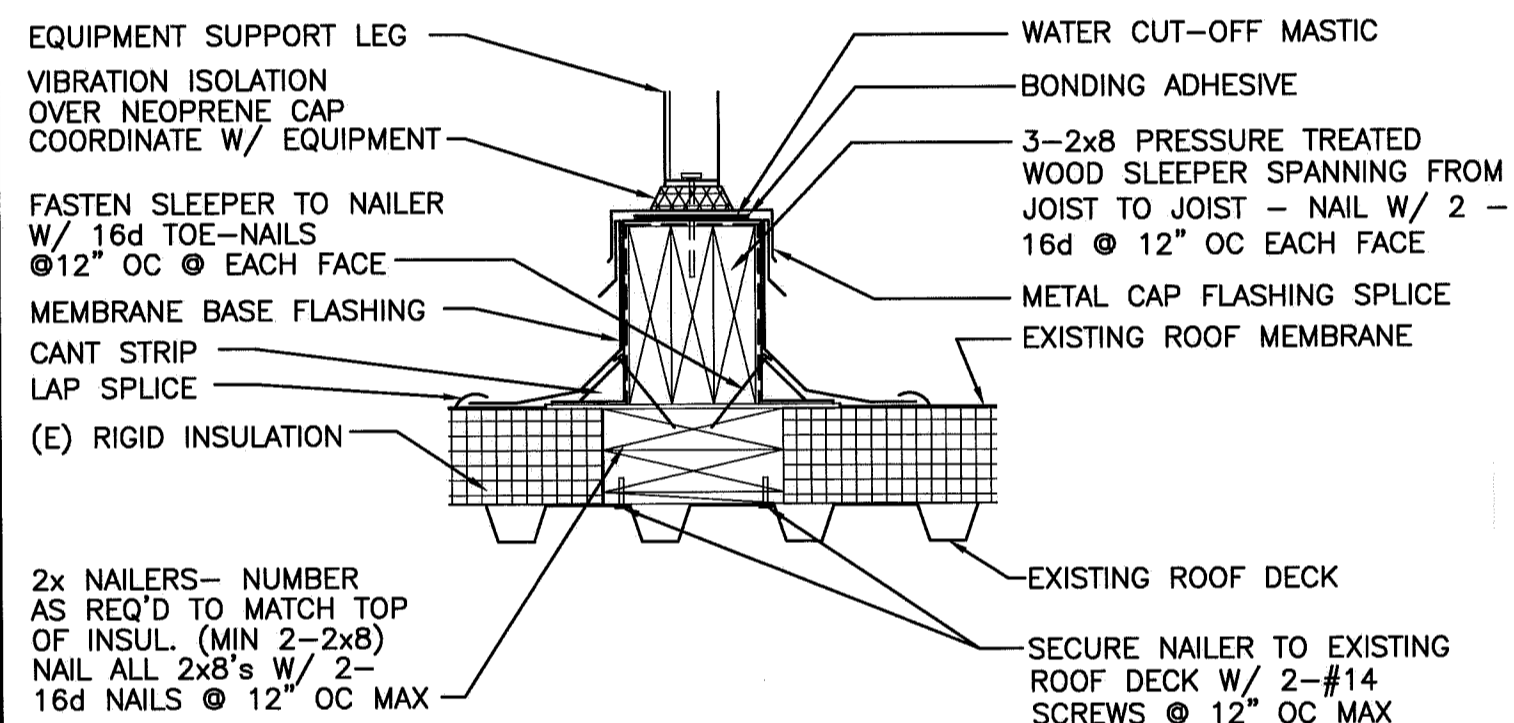
H13 BRICK VENT DETAIL

1-1/2"=1'-0"



E9 SOFFIT DETAIL

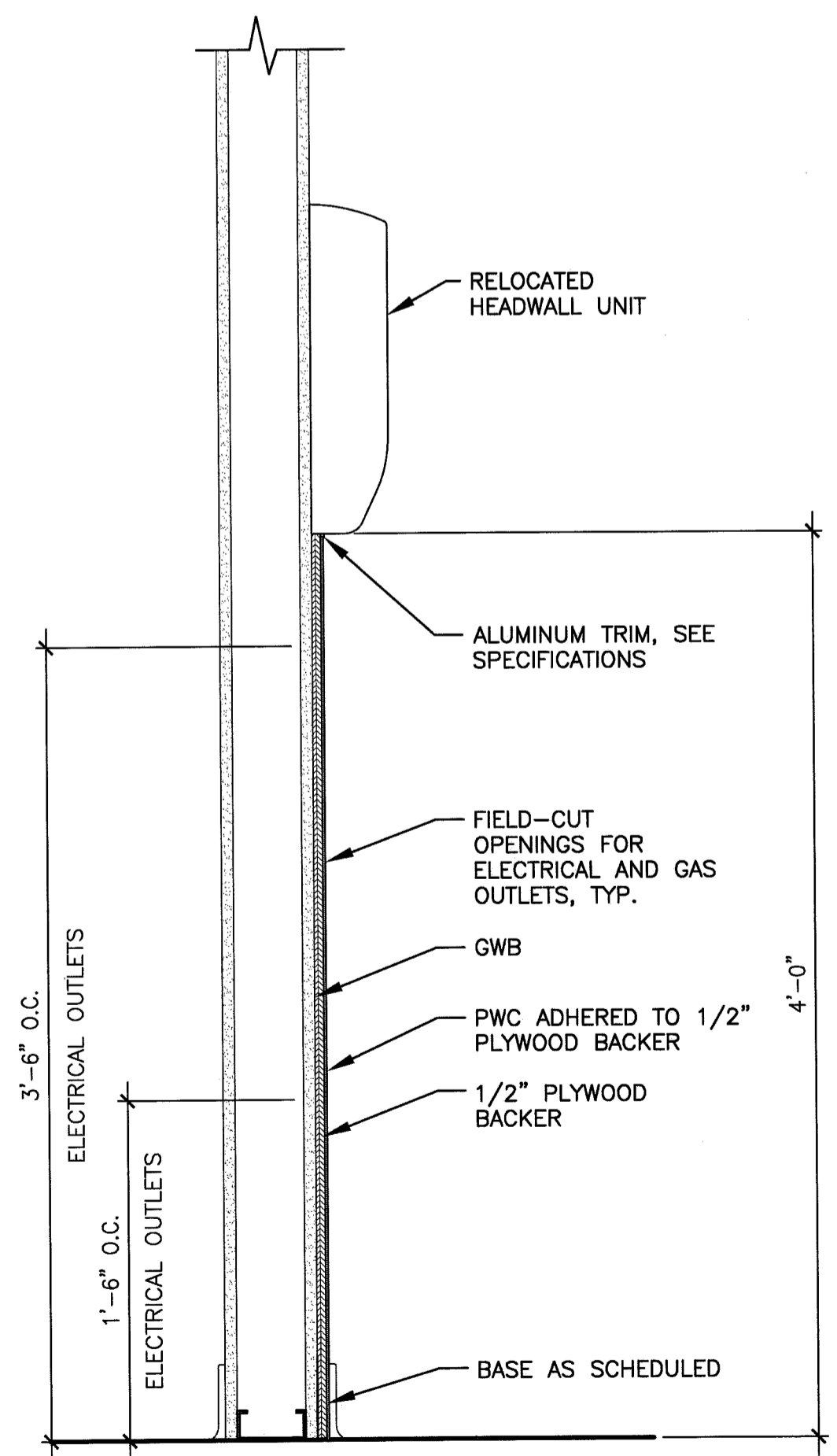
3"=1'-0"



NOTE: VERIFY ALL MATERIALS USED ARE COMPATIBLE WITH EXISTING ROOFING SYSTEM.

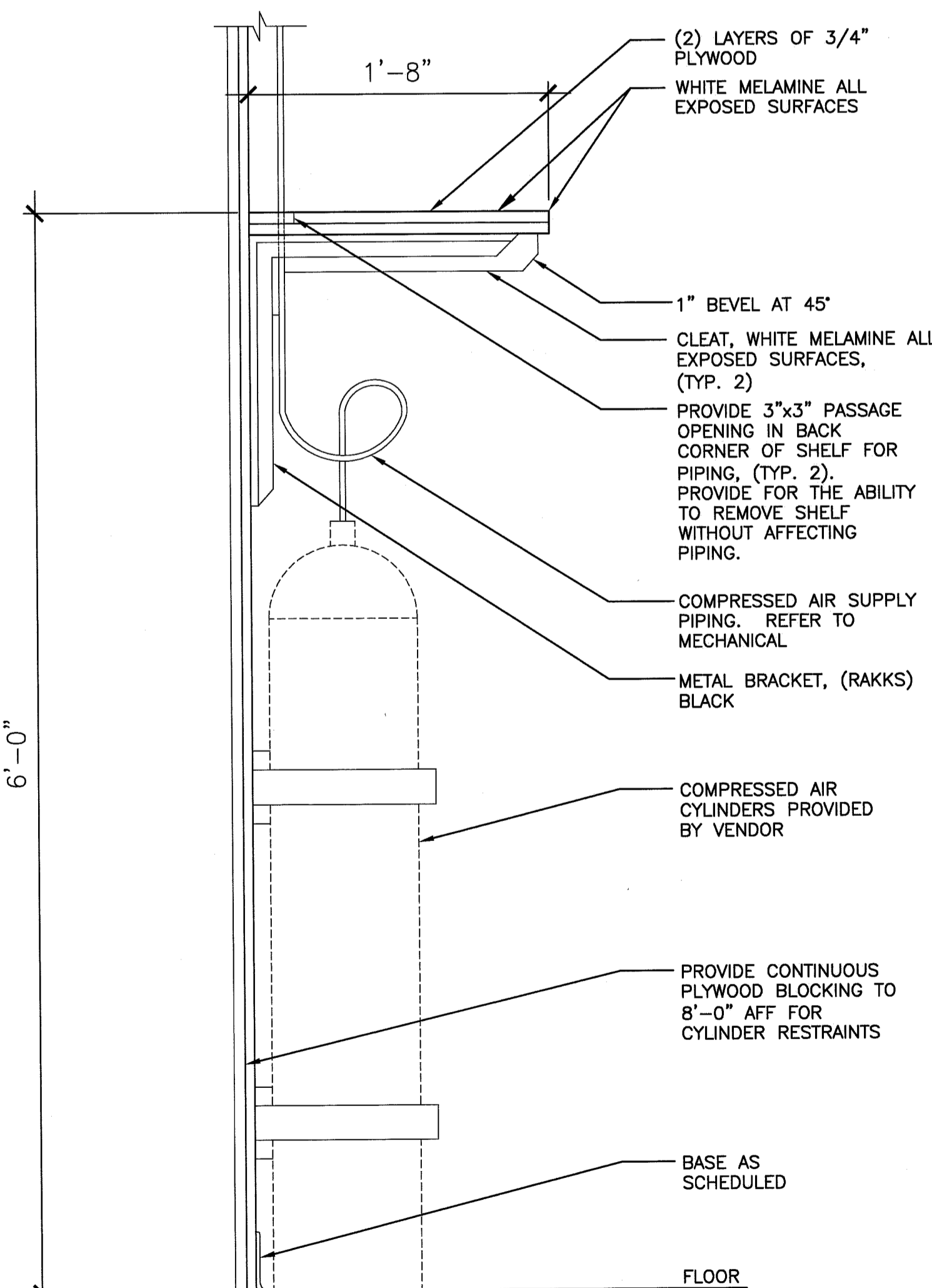
E13 SLEEPER DETAIL

1-1/2"=1'-0"



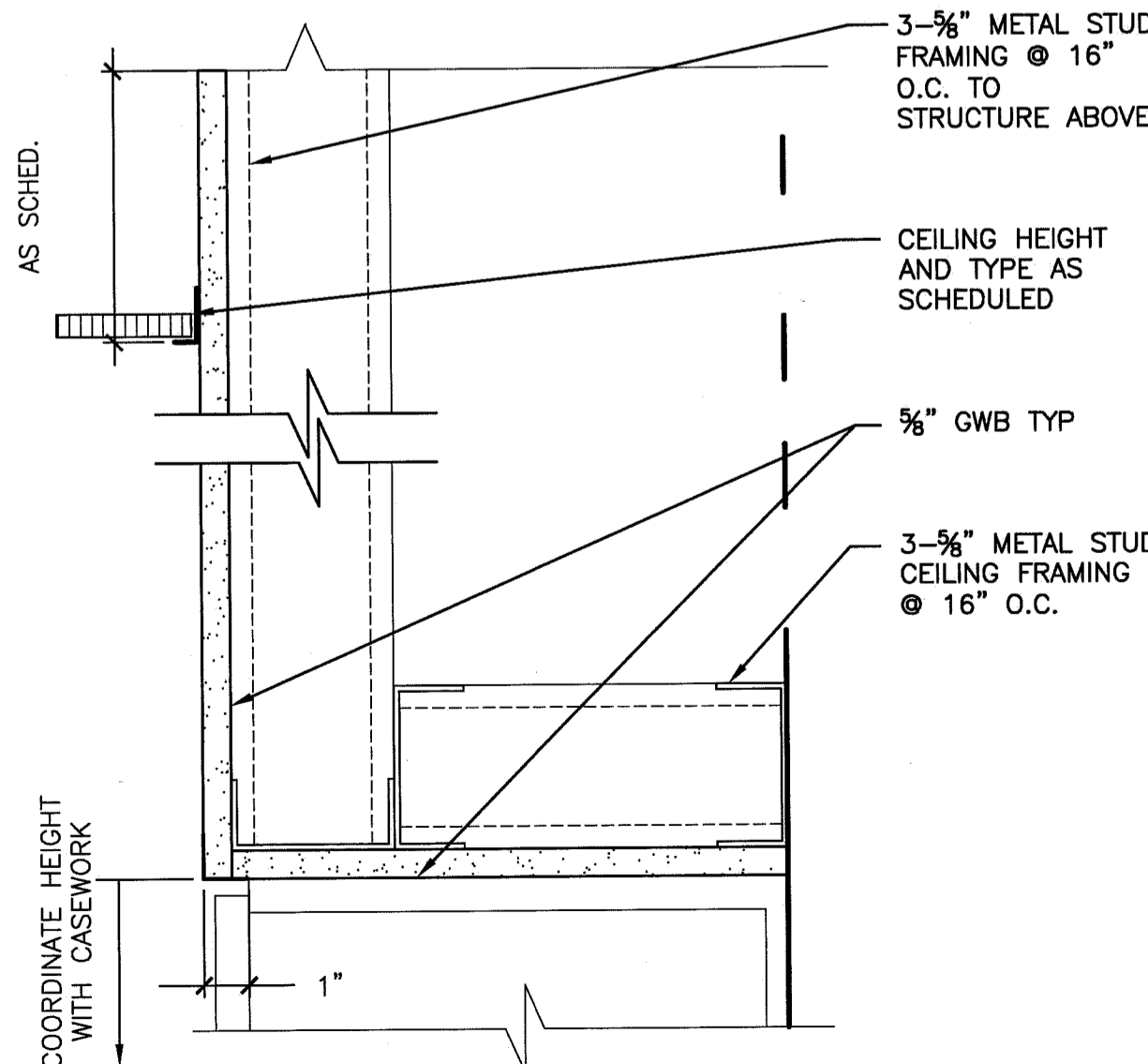
A1 CASEWORK DETAIL

1-1/2"=1'-0"



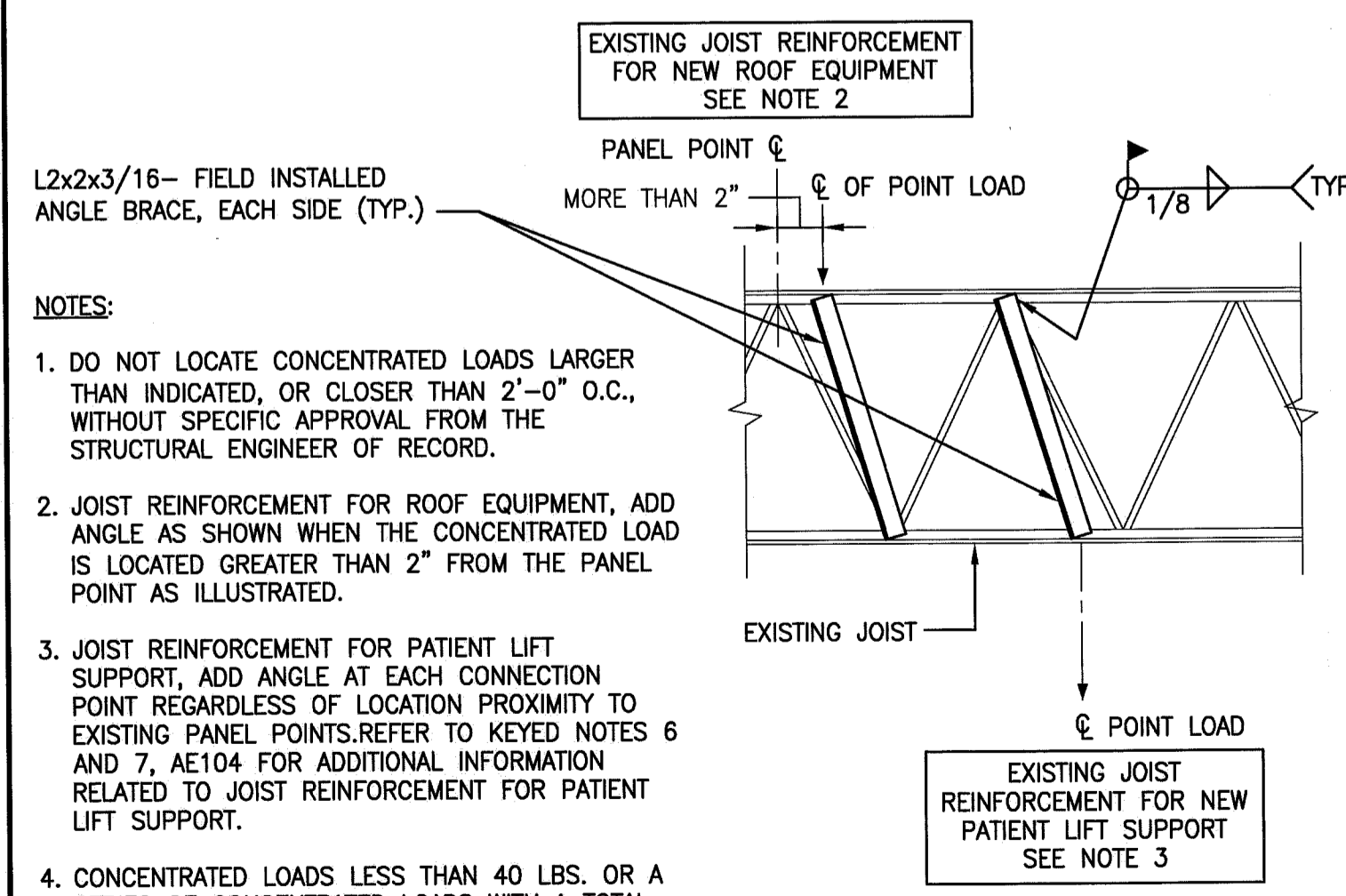
A5 CASEWORK DETAIL

1-1/2"=1'-0"



A9 JOIST REINFORCEMENT DETAIL

3"=1'-0"



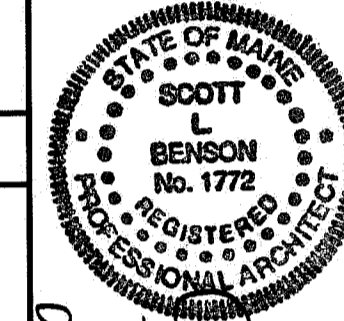
A13 JOIST REINFORCEMENT DETAIL

3/4"=1'-0"

144 Fore Street/P.O. Box 618
Portland, Maine 04104
tel. (207) 772-3846
fax. (207) 772-1070
www.smrinc.com

ARCHITECTURE
ENGINEERING
PLANNING
INTERIOR DESIGN
COMMISSIONING

SMRI



UNIVERSITY OF SOUTHERN MAINE
SIMULATION LABORATORY
PORTLAND, MAINE

ISSUED FOR BIDDING & CONSTRUCTION
4-15-11

REV	DESCRIPTION	DATE
0	ISSUED FOR BIDDING & CONSTRUCTION	4-15-11

GRAPHIC SCALE: 0" = 1"

SCALE: AS NOTED

PROJECT MANAGER: SLB

JC/DRAWN BY: CB

A/E OF RECORD: SLB

CAD FILE: AE502-10150

PROJECT NO: 10150-00

DATE: 4-15-11

SHEET TITLE: DETAILS

SHEET No. **AE502**

© copyright 2009 SMRI INC.