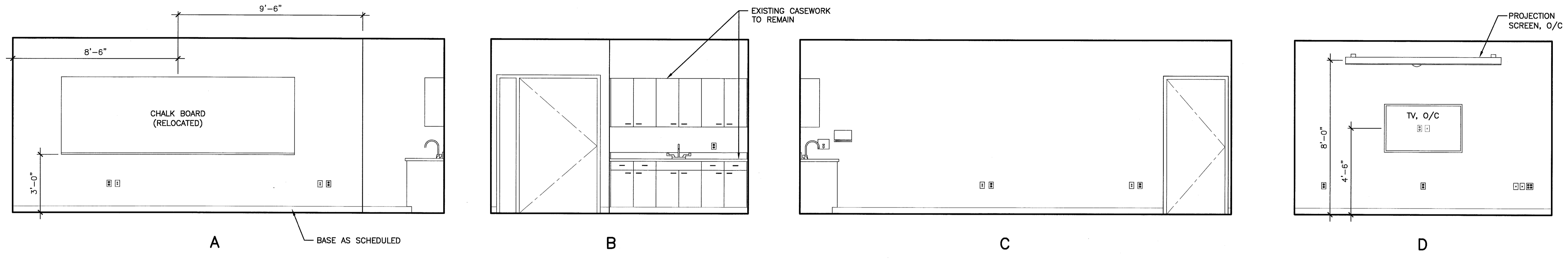
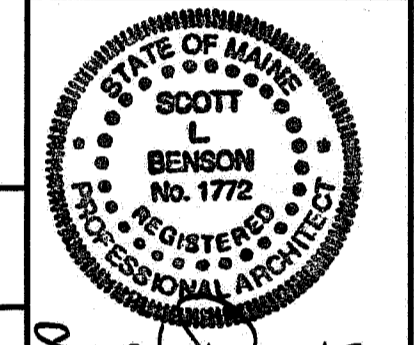


- NOTES:**
- SEE AE601 FOR ROOM FINISH SCHEDULE FOR FINISH ABBREVIATIONS.
  - REFER TO ELECTRICAL DRAWINGS FOR ELECTRICAL DEVICES NOT SHOWN.
  - REFER TO AE602 DOOR SCHEDULE FOR DOOR GLAZING TYPES.

144 Fore Street/P.O. Box 618  
 Portland, Maine 04104  
 Tel: (207) 772-3846  
 Fax: (207) 772-1070  
 www.smartinc.com

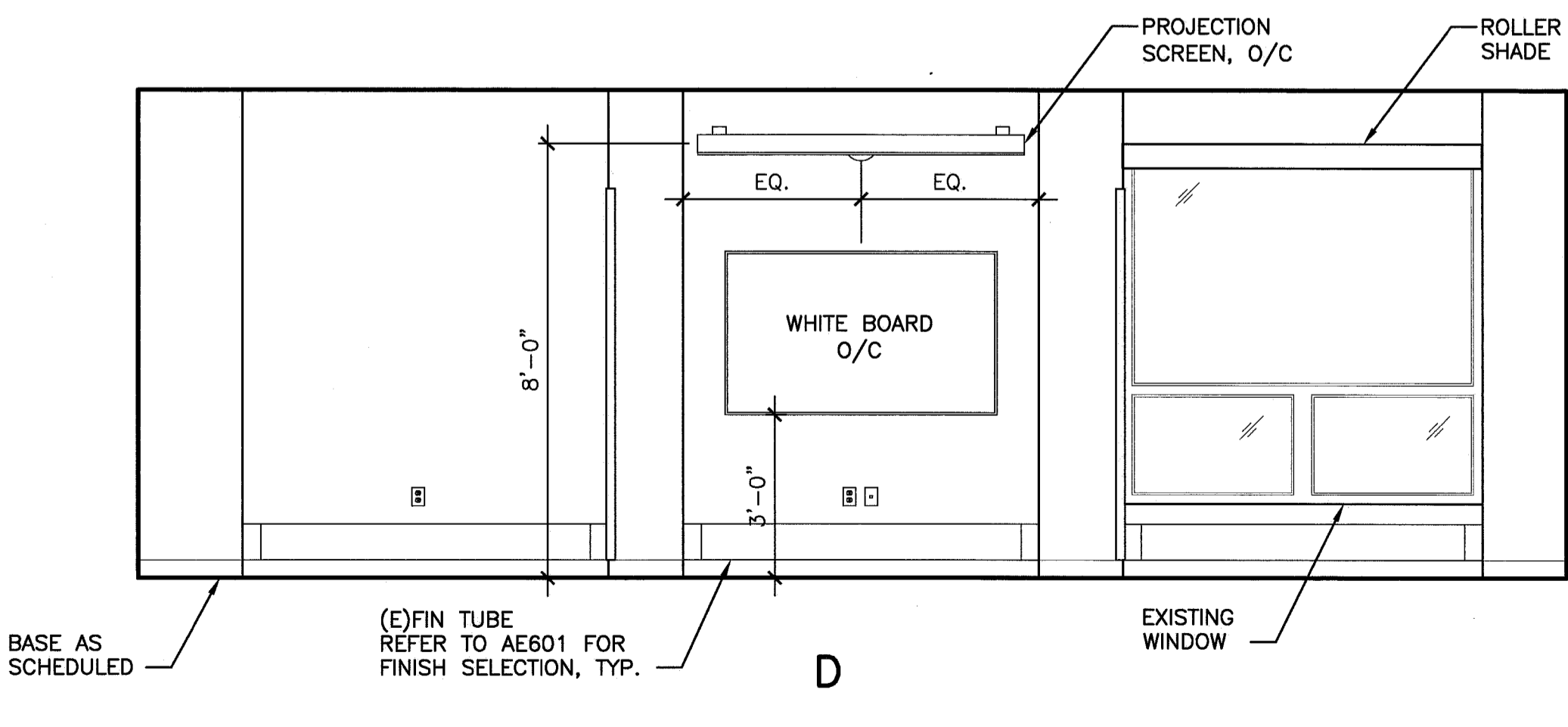
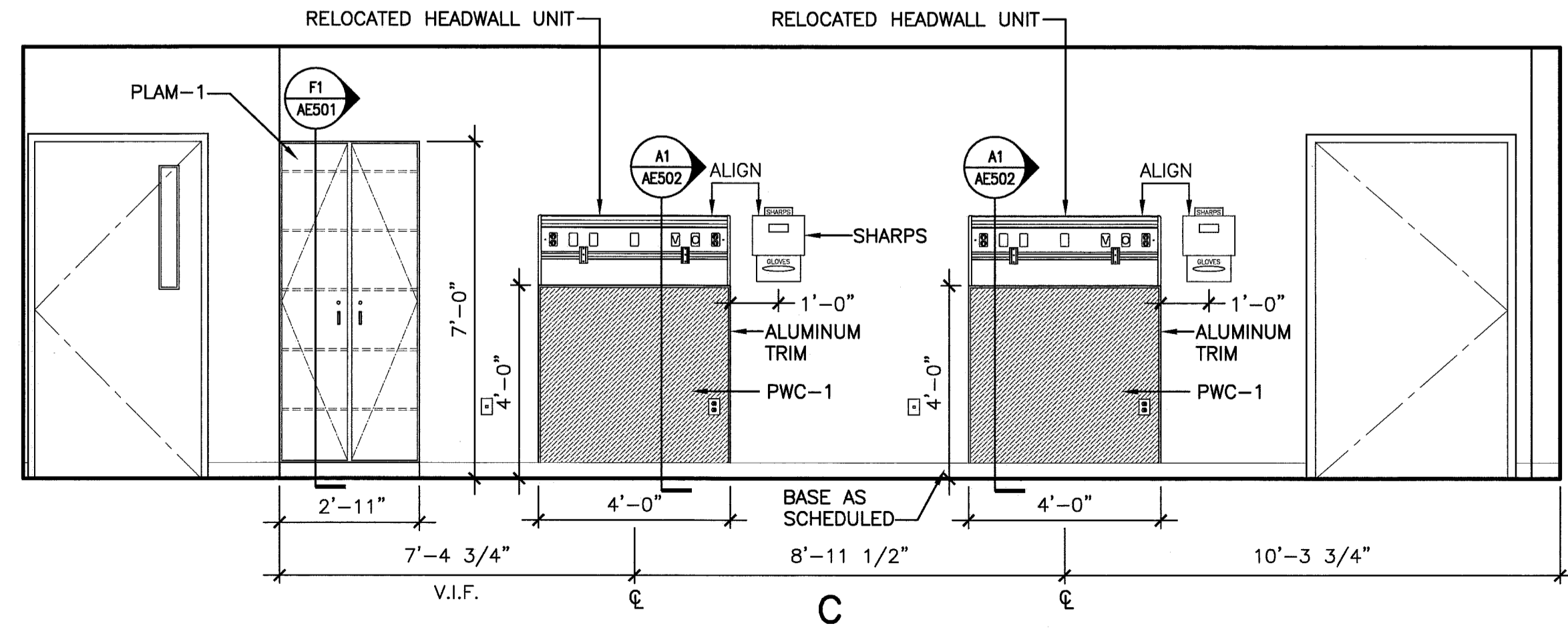
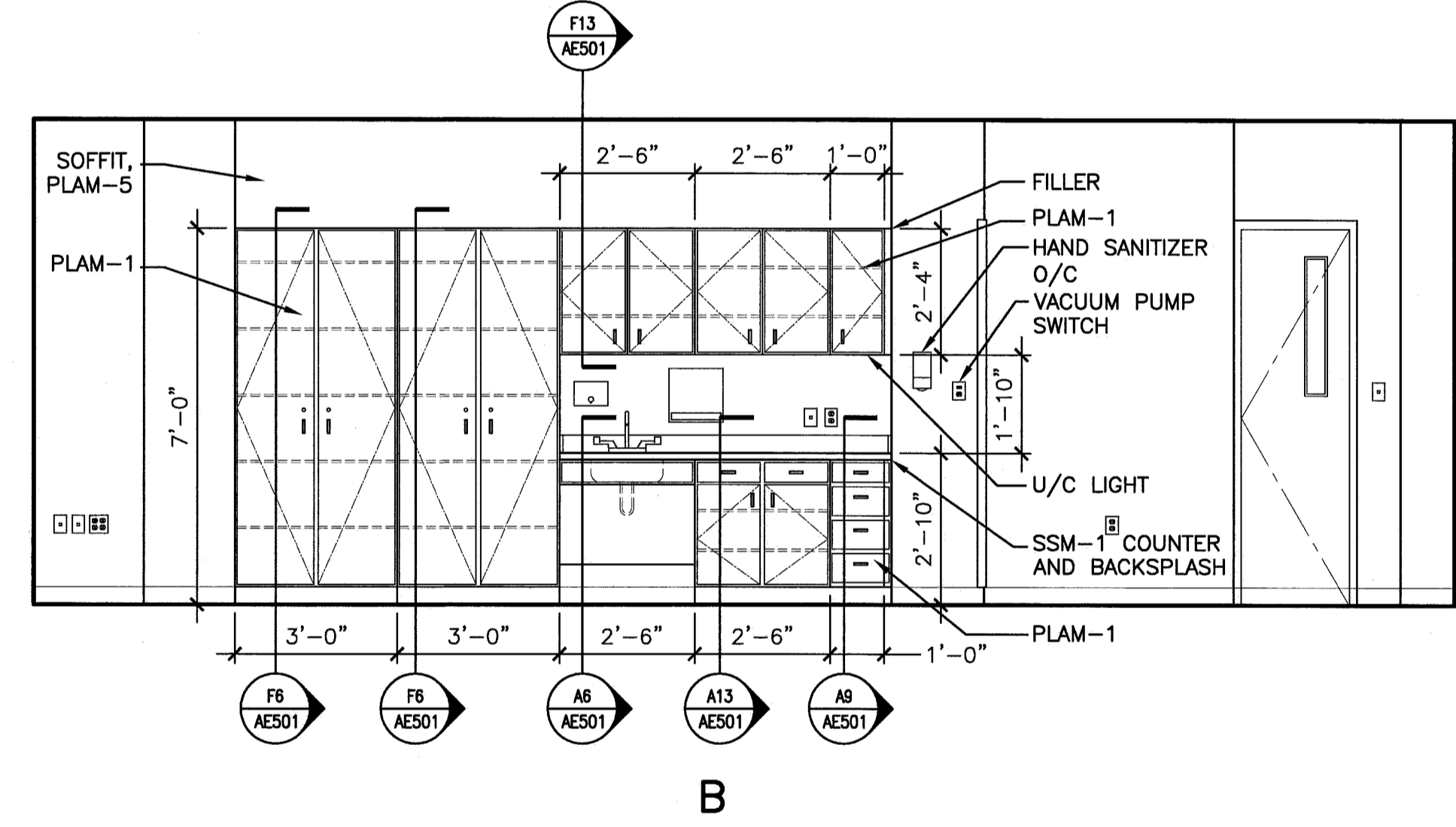
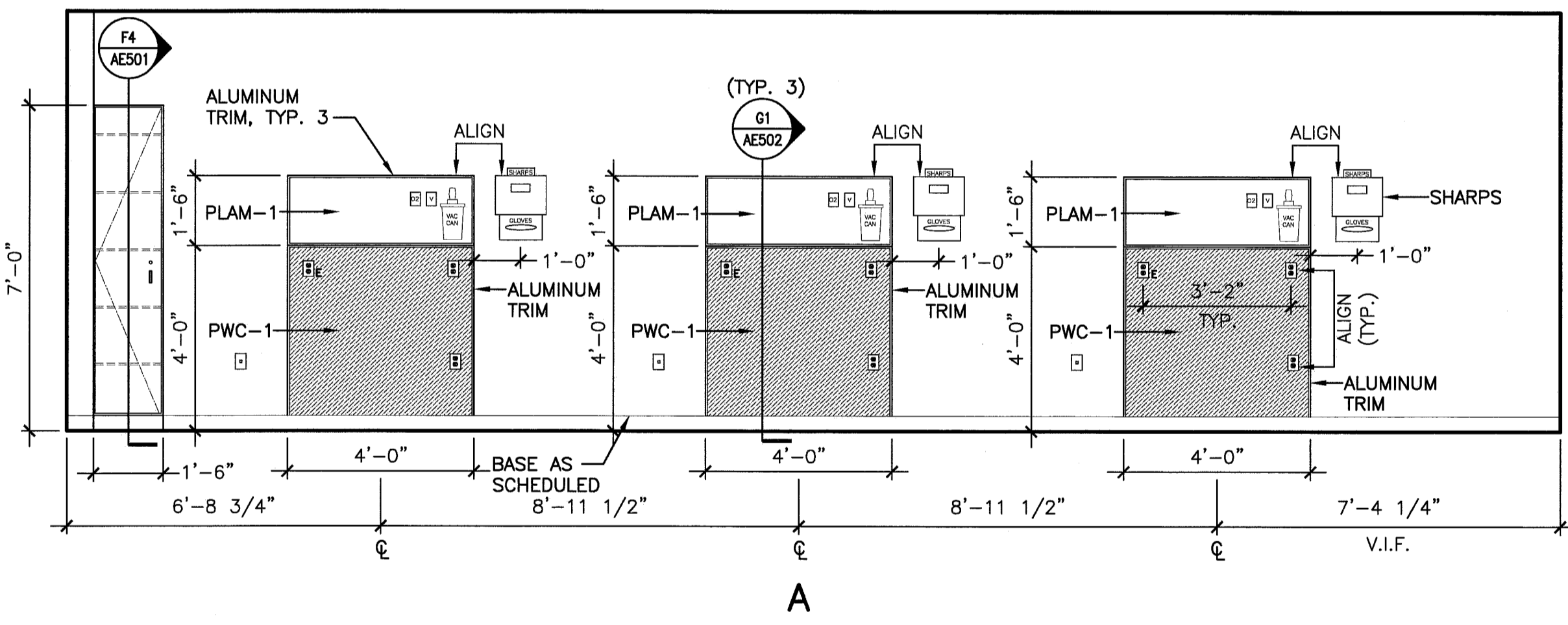
ARCHITECTURE  
 ENGINEERING  
 PLANNING  
 INTERIOR DESIGN  
 COMMISSIONING

**SMART**



**H1 DEBRIEFING 303**

3/8" = 1'-0"



**A1 FUNDAMENTALS LAB 305**

3/8" = 1'-0"

UNIVERSITY OF SOUTHERN MAINE  
 SIMULATION LABORATORY  
 PORTLAND, MAINE

ISSUED FOR BIDDING & CONSTRUCTION  
 4-15-11

CURRENT ISSUE STATUS:

REV	DESCRIPTION	DATE
0	ISSUED FOR BIDDING & CONSTRUCTION	4-15-11

GRAPHIC SCALE:  
 0" 1"

SCALE: AS NOTED

PROJECT MANAGER: SLB  
 J/C/DRAWN BY: CAH  
 A/E OF RECORD: SLB

CAD FILE: AE213-10150  
 PROJECT NO: 10150-00  
 DATE: 4-15-11

SHEET TITLE:  
 INTERIOR ELEVATIONS

SHEET No.  
**AE213**

© COPYRIGHT 2009 SMART INC.