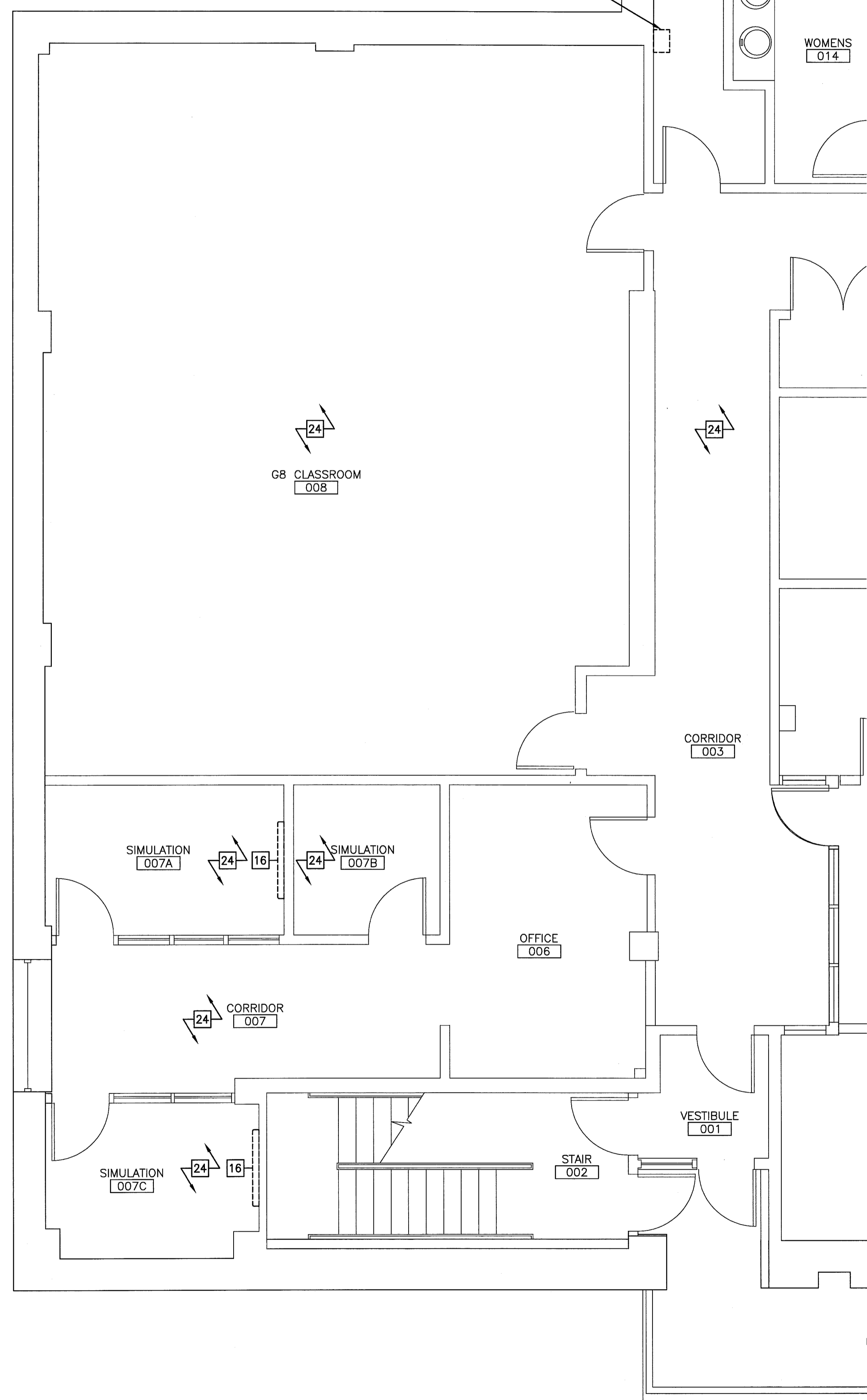


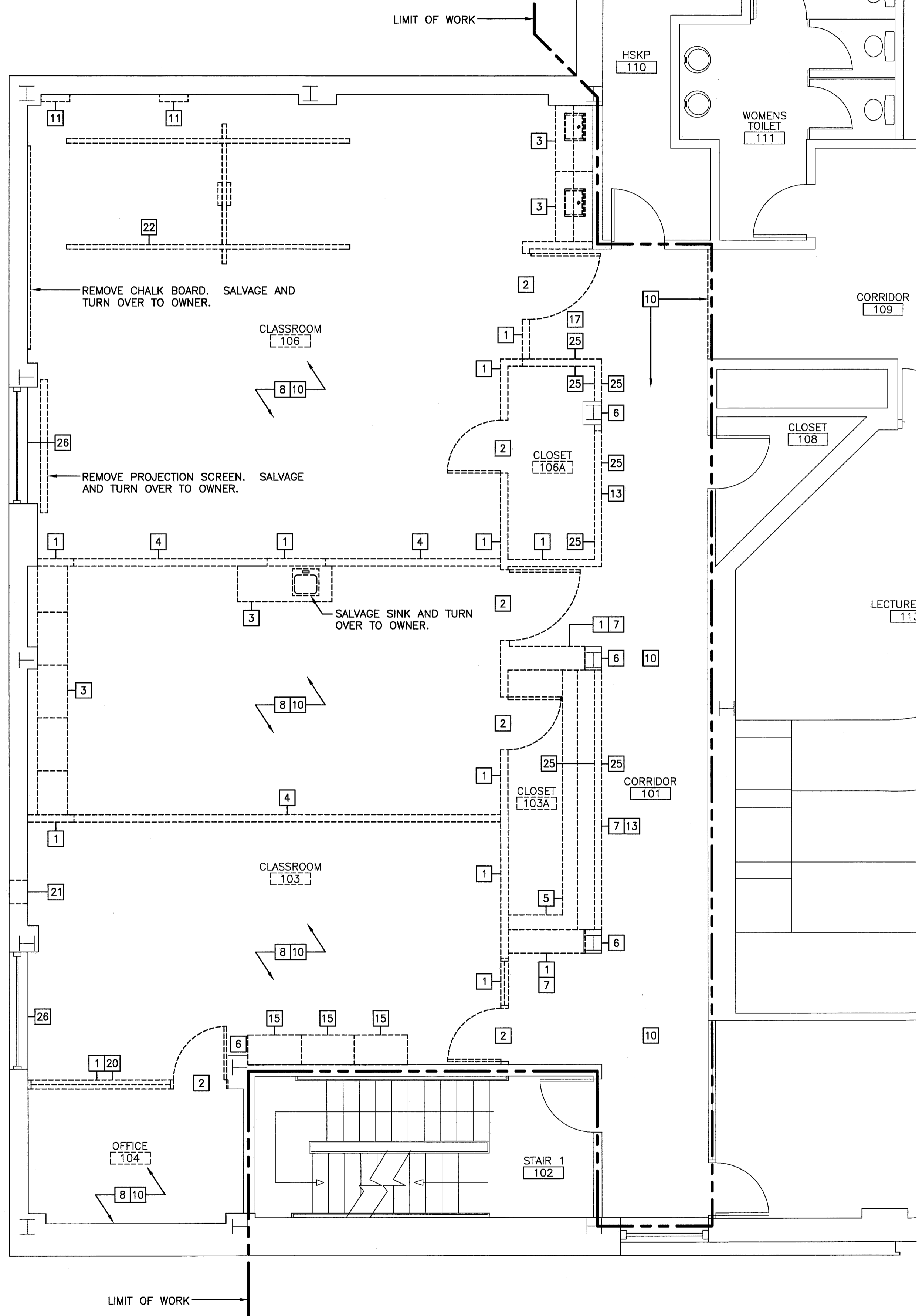
EXISTING VACUUM PUMP TO BE RELOCATED TO MECHANICAL PENTHOUSE. REMOVE AND RELOCATE EXISTING SHELF AND SUPPORTS TO MECHANICAL PENTHOUSE. REFER TO MECHANICAL AND PLUMBING PLANS FOR LOCATION.

EXISTING VACUUM PUMP TO BE REMOVED AND TURNED OVER TO OWNER FOR SALVAGE. REMOVE SHELF AND ALL ASSOCIATED SUPPORTS.



A1 GROUND FLOOR DEMOLITION PLAN

1/4" = 1'-0"



A7 FIRST FLOOR DEMOLITION PLAN

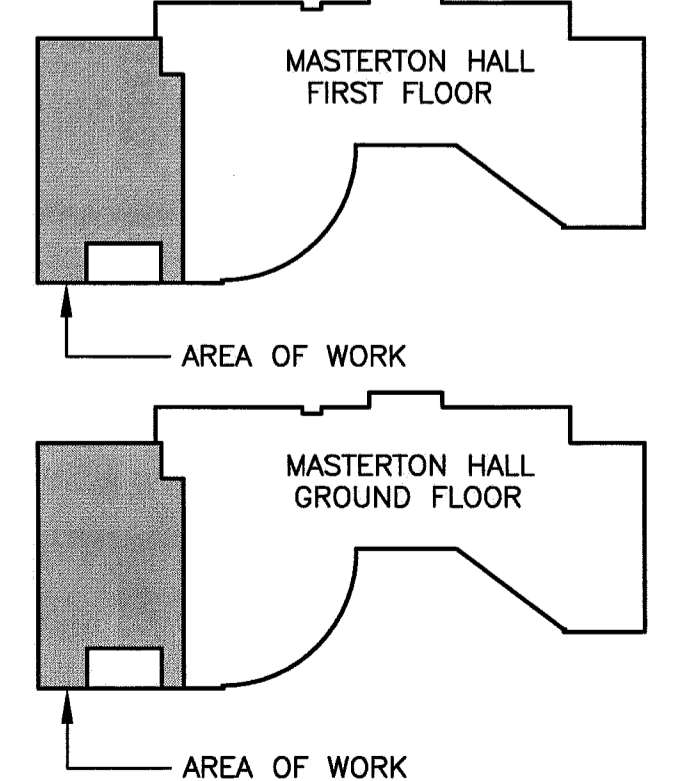
1/4" = 1'-0"

GENERAL DEMOLITION NOTES:

- COORDINATE EXTENT OF DEMOLITION WITH LOCATIONS OF PARTITIONS DESCRIBED ON PLANS AND WITH LOCATIONS OF FINISHES NOTED AS EXISTING TO REMAIN.
- ANY WALL, PARTITION OR SURFACE DISTURBED BECAUSE OF NEW WORK OR DEMOLITION SHALL BE PATCHED AND FINISHED CONTINUOUSLY TO THE NEAREST CORNER UNLESS NOTED OTHERWISE. MATCH EXISTING ADJACENT CONSTRUCTION FINISHES, CONTINUITY AND FIRE RATINGS UNLESS NOTED OTHERWISE.
- PROTECT ALL FINISHES, MATERIALS AND EQUIPMENT NOTED AS EXISTING TO REMAIN. CONTRACTOR SHALL BE RESPONSIBLE TO REPLACE ALL FINISHES, MATERIALS AND EQUIPMENT DAMAGED DURING CONSTRUCTION.
- FOR EXTENTS OF CEILING GRID REMOVALS AND ADJUSTMENTS ON FIRST FLOOR, REFER TO SHEET AE111.
- REFER TO G101 FOR SCHEDULE OF ALTERNATES.

DEMOLITION KEYED NOTES:

- REMOVE EXISTING PARTITION COMPLETE.
- REMOVE EXISTING DOOR, FRAME AND HARDWARE ASSEMBLIES. SALVAGE DOOR AND HARDWARE AND RETURN TO OWNER.
- REMOVE EXISTING CASEWORK. SALVAGE AND TURN OVER TO OWNER. WHERE APPLICABLE, COORDINATE WITH PLUMBING PLANS FOR EXTENT OF FIXTURE REMOVALS.
- REMOVE EXISTING SOFFIT COMPLETE.
- REMOVE EXISTING BUILT-IN SHELVING.
- MAINTAIN OR REPAIR EXISTING FIRE PROOFING AT COLUMNS.
- REMOVE RECESSED MAIL BOXES COMPLETE.
- REMOVE EXISTING CARPET FLOORING COMPLETE.
- REMOVE EXISTING VCT FLOORING COMPLETE.
- REMOVE EXISTING CEILING TILES AND GRID ASSEMBLY COMPLETE. COORDINATE EXTENTS OF REMOVAL WITH AE111 AND AE112.
- REMOVE WALL MOUNTED ENCLOSURE AND ASSOCIATED PIPING AND WIRING. SALVAGE ENCLOSURE AND TURN OVER TO OWNER.
- REMOVE PORTION OF WALL FOR INSTALLATION OF NEW DOOR. COORDINATE WITH NEW PLAN FOR EXTENT.
- REMOVE PORTION OF WALL FOR INSTALLATION OF WINDOW. COORDINATE EXTENT WITH NEW PLANS AND ELEVATIONS.
- REMOVE DOOR, FRAME AND HARDWARE. SALVAGE AUTO-OPENER AND TURN OVER TO OWNER.
- REMOVE EXISTING CASEWORK AND RELOCATE TO STORAGE 305A.
- REMOVE AND RELOCATE HEADWALL UNIT TO THIRD FLOOR FUNDAMENTALS LAB. COORDINATE WITH ELECTRICAL AND MECHANICAL PLANS FOR EXTENT. PATCH ALL WALL PENETRATIONS.
- REMOVE PORTION OF FLOOR AND CEILING. COORDINATE WITH NEW PLANS FOR EXTENT.
- REMOVE AND RELOCATE EXISTING CHALK BOARD IN DEBRIEFING 303. COORDINATE WITH NEW PLANS FOR LOCATION.
- REMOVE AND RELOCATE DOOR, FRAME AND HARDWARE TO DOOR #303A.
- REMOVE WINDOW/SIDELITE AND FRAME COMPLETE.
- REMOVE PORTION OF EXTERIOR WALL FOR INSTALLATION OF BRICK VENT. REMOVE EXISTING BRICKS AS REQUIRED FOR VENT SIZE SPECIFIED. COORDINATE WITH MECHANICAL PLANS AND SPECIFICATIONS. VERIFY SCOPE WITH ARCHITECT PRIOR TO WORK.
- REMOVE AND RELOCATE CEILING MOUNTED PATIENT LIFT TO FUNDAMENTALS LAB 305. REMOVE ALL ASSOCIATED EQUIPMENT SUPPORTS. REFER TO AE102 AND AE104 FOR NEW LOCATION.
- EXISTING CASEWORK TO REMAIN.
- REMOVE EXISTING CEILING SYSTEM AS NEEDED TO PERFORM REQUIRED PLUMBING REMOVALS AND INSTALLATIONS. COORDINATE WITH PLUMBING PLANS FOR EXACT LOCATIONS. REINSTALL CEILING IN ORIGINAL LOCATION AND CONDITION WHEN WORK IS COMPLETE.
- REMOVE EXISTING GWB FULL HEIGHT. EXISTING METAL STUD FRAMING TO REMAIN. REFER TO AE103 AND AE104 FOR NEW WALL TYPE.
- REMOVE EXISTING WINDOW SHADE AND ASSOCIATED BRACKETS.
- REMOVE EXISTING CEILING SYSTEM AS NEEDED TO PERFORM REQUIRED JOIST REINFORCEMENT. REFER TO AE110. REINSTALL CEILING TILES IN ORIGINAL LOCATION AND CONDITION WHEN WORK IS COMPLETE.

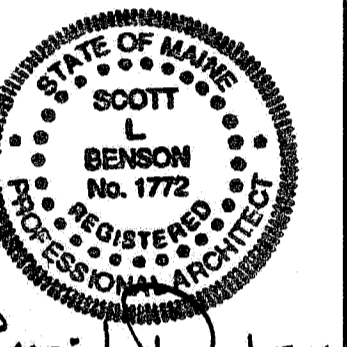
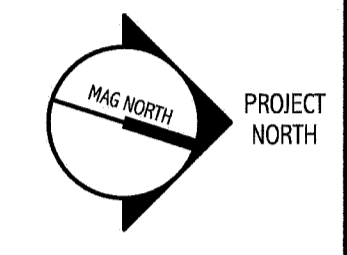
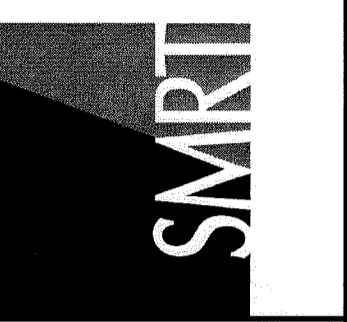


A14 KEY PLAN

NOT TO SCALE

144 Fore Street/P.O. Box 618
Portland, Maine 04104
Tel: (207) 772-3846
Fax: (207) 772-1070
www.smartrc.com

ARCHITECTURE
ENGINEERING
PLANNING
INTERIOR DESIGN
COMMISSIONING



UNIVERSITY OF SOUTHERN MAINE
SIMULATION LABORATORY
PORTLAND, MAINE

ISSUED FOR BIDDING & CONSTRUCTION
4-15-11

REV	DESCRIPTION	DATE
0	ISSUED FOR BIDDING & CONSTRUCTION	4-15-11

GRAPHIC SCALE:
0" 1"

SCALE: 1/4" = 1'-0"
PROJECT MANAGER: SLB
JC/DRAWN BY: CAH
A/E OF RECORD: SLB
CAD FILE: AD101-10150
PROJECT NO: 10150-00
DATE: 4-15-11

SHEET TITLE:
GROUND FLOOR AND FIRST FLOOR DEMOLITION PLANS

SHEET No. AD101
© COPYRIGHT 2009 SMART INC.