

NOTE:
1. SEE GIO01 FOR LEGEND AND GENERAL NOTES.

144 Fore Street/P.O. Box 618
Portland, Maine 04104
tel. (207) 772-3846
fax. (207) 772-1070
www.smritinc.com

ARCHITECTURE
ENGINEERING
PLANNING
INTERIOR DESIGN
COMMISSIONING

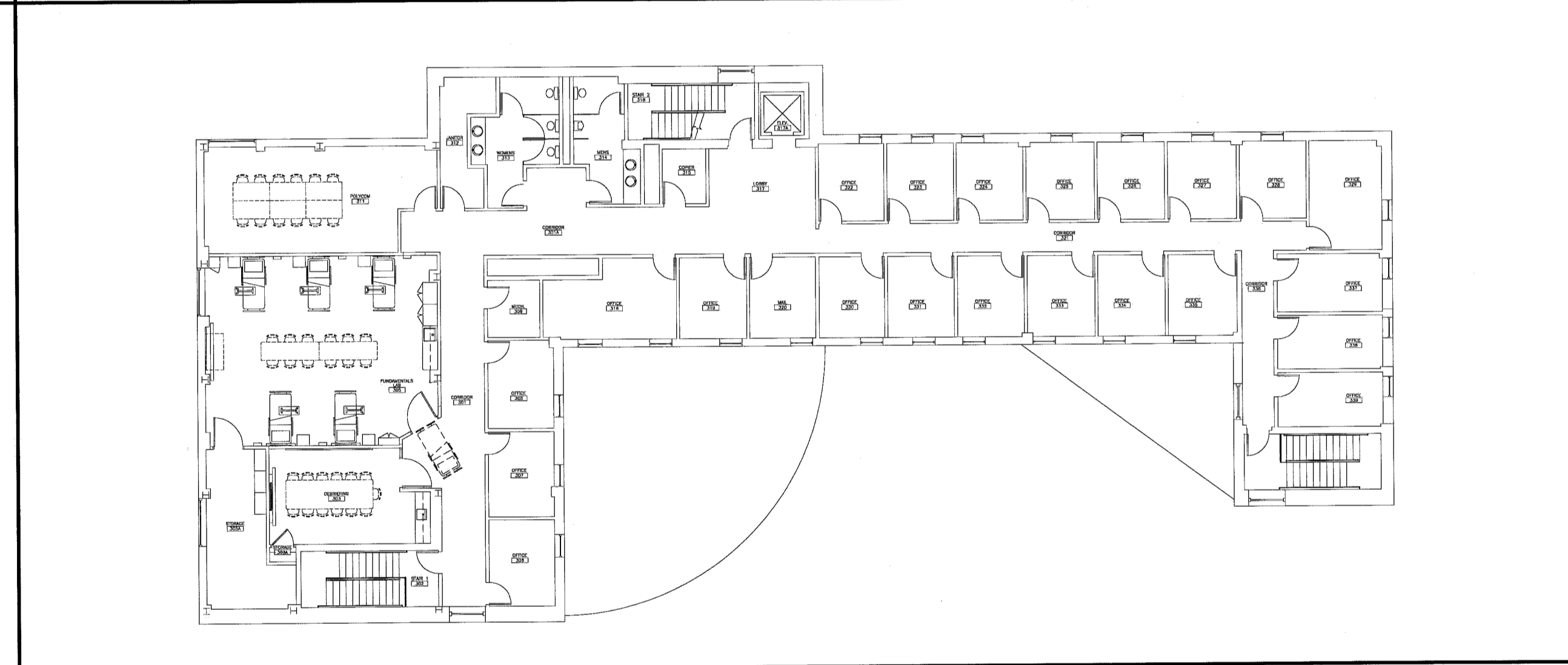
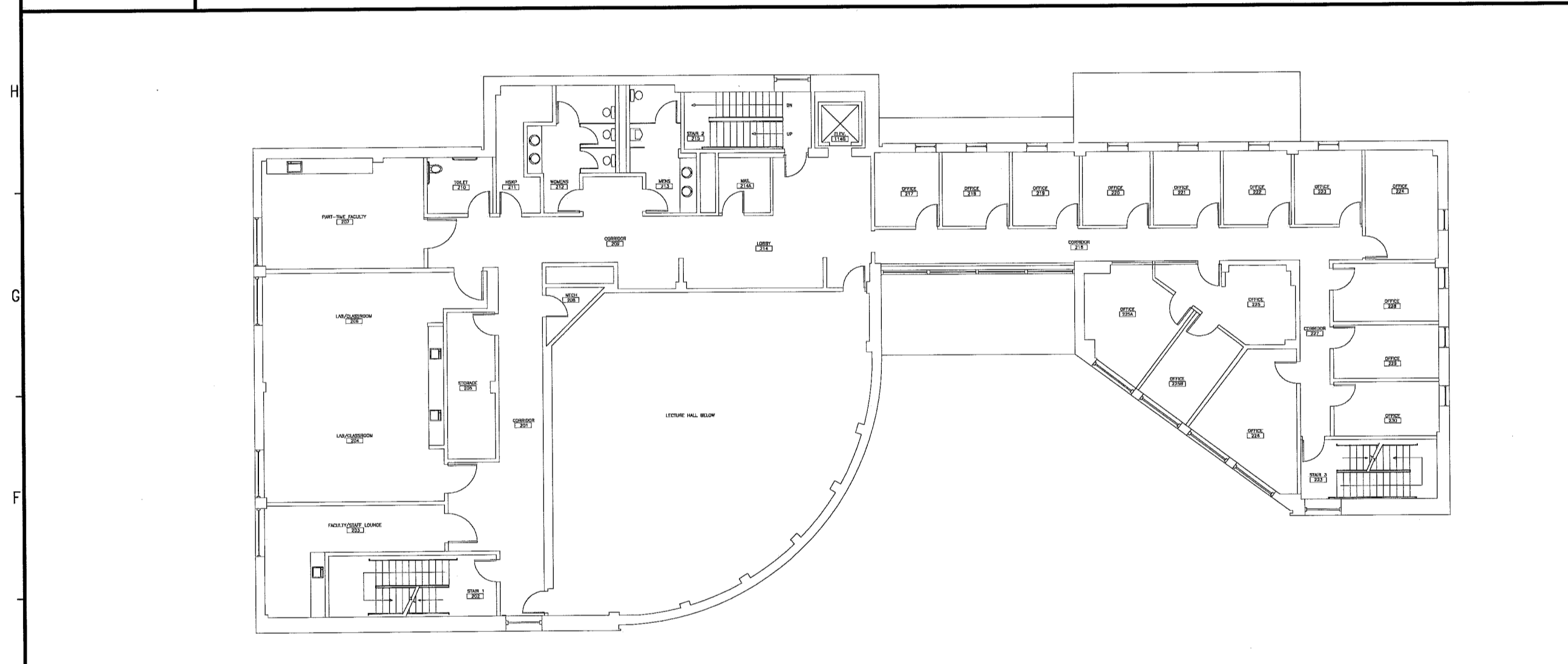
SMRI

MAG NORTH PROJECT NORTH

STATE OF MAINE
SCOTT L. BENSON
No. 1772
REGISTERED PROFESSIONAL ARCHITECT

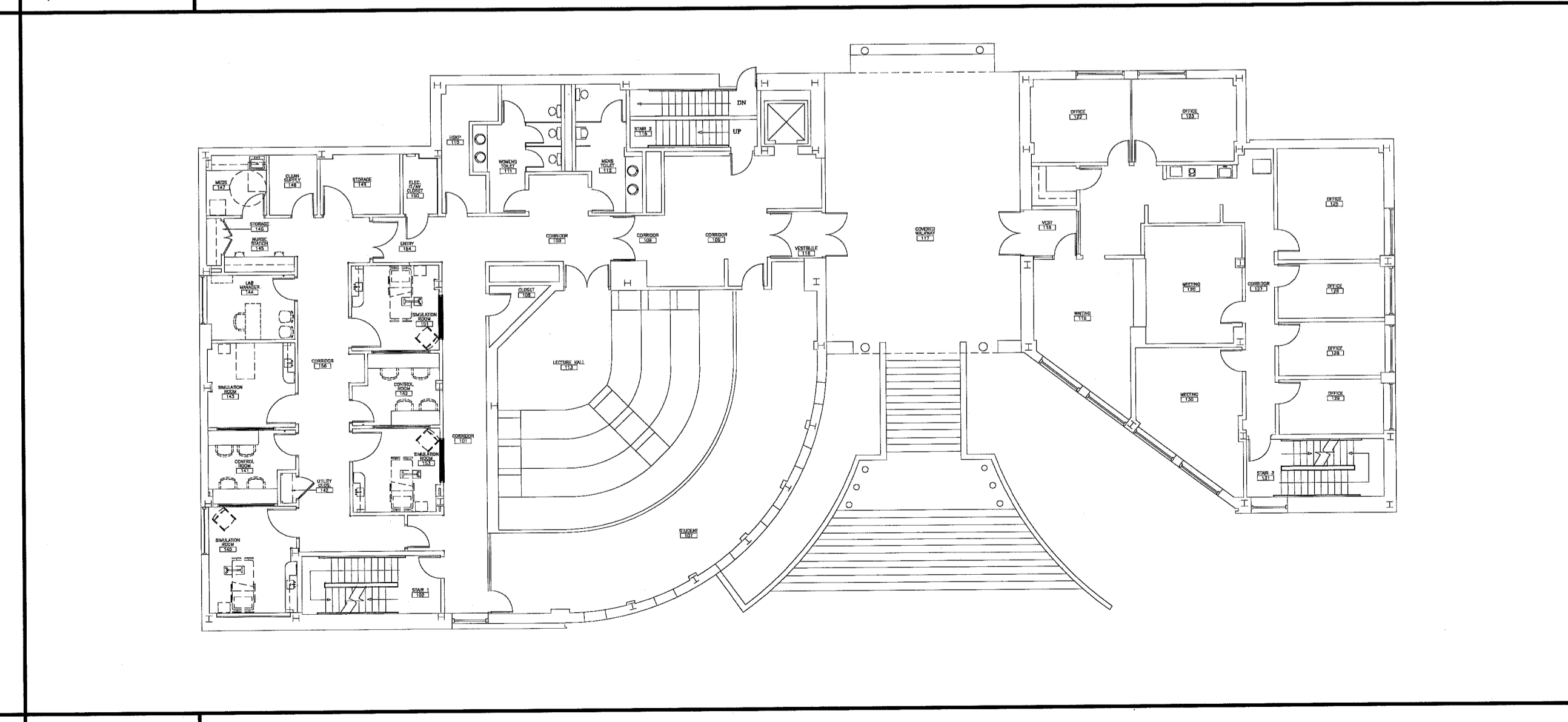
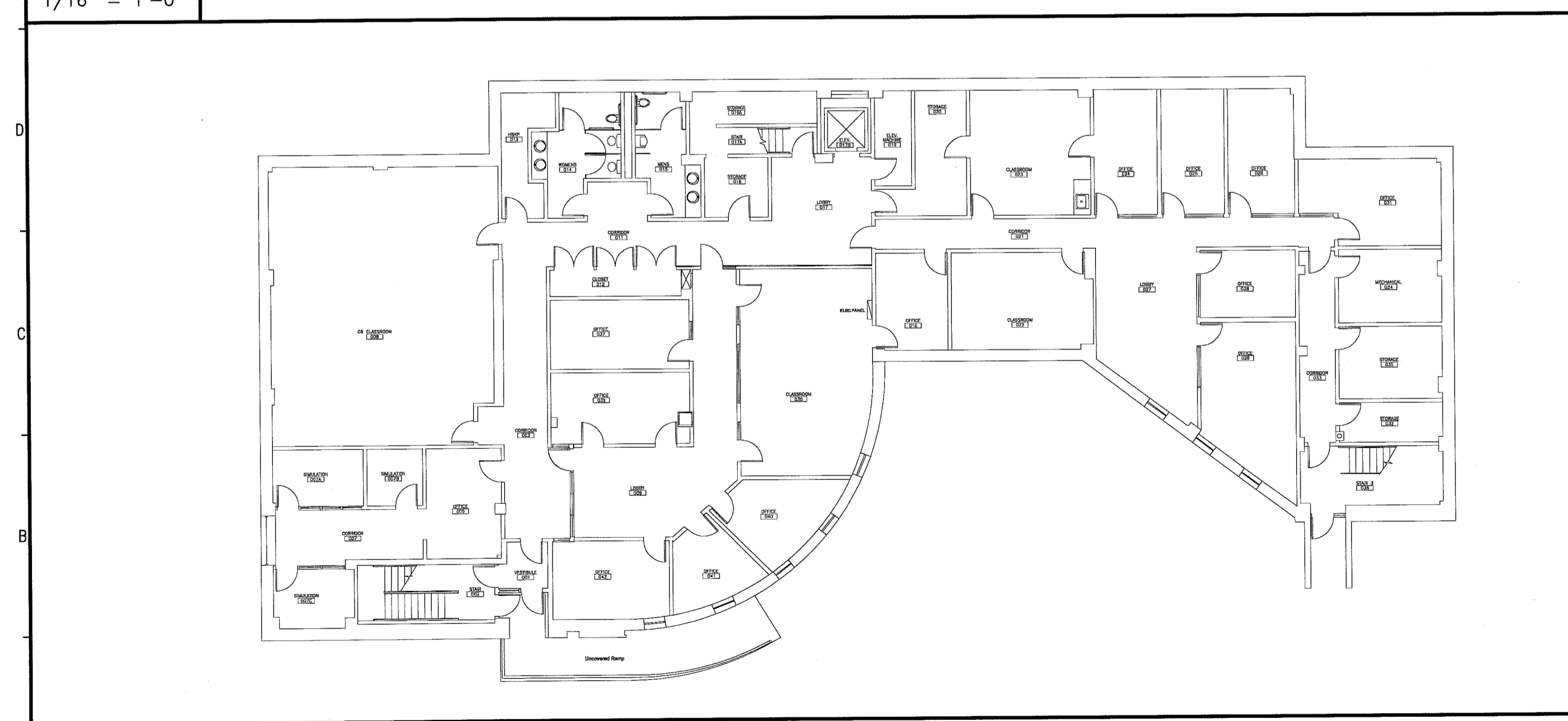
J1 PENTHOUSE PLAN
1/16" = 1'-0"

J8 ROOF PLAN
1/16" = 1'-0"



E1 SECOND FLOOR PLAN
1/16" = 1'-0"

E8 THIRD FLOOR PLAN
1/16" = 1'-0"



A1 GROUND FLOOR PLAN
1/16" = 1'-0"

A8 FIRST FLOOR PLAN
1/16" = 1'-0"

UNIVERSITY OF SOUTHERN MAINE
SIMULATION LABORATORY
PORTLAND, MAINE

ISSUED FOR BIDDING & CONSTRUCTION
4-15-11

CURRENT ISSUE STATUS:

REV	DESCRIPTION	DATE
0	ISSUED FOR BIDDING & CONSTRUCTION	4-15-11

GRAPHIC SCALE:
0' 1'

SCALE: AS NOTED

PROJECT MANAGER: SLB
JC/DRAWN BY: CAL
A/E OF RECORD: SLB
CAD FILE: A-002-10150
PROJECT NO: 10150-00
DATE: 4-15-11

SHEET TITLE:
FACILITY PLAN

SHEET No.
A-002

© copyright 2009 SMRI INC.