

CODE COMPLIANCE

CODE REVIEW SUMMARY

PROJECT DESCRIPTION:
REMOVALS AND RENOVATIONS TO EXISTING CLASSROOM AREAS FOR USE AS LEARNING LABORATORIES WHERE STUDENTS INTERACT WITH ELECTRONICALLY CONTROLLED PATIENT MANNEQUINS WITHIN A SIMULATED HEALTHCARE ENVIRONMENT.

FIRE: NFPA INCLUDING 101 LIFE SAFETY CODE, 2009 EDITION

BUILDING: INTERNATIONAL BUILDING CODE, 2009 EDITION

ACCESSIBILITY: ADA, ACCESSIBILITY GUIDELINES FOR BUILDINGS AND FACILITIES.

PLUMBING: MAINE STATE PLUMBING CODE, 2009 EDITION

ELECTRICAL: NATIONAL ELECTRICAL CODE, 2008 EDITION

USE GROUP CLASSIFICATION(S):
IBC: BUSINESS GROUP B - EDUCATIONAL OCCUPANCY ABOVE 12TH GRADE
NFPA: BUSINESS - COLLEGE AND UNIVERSITY INSTRUCTIONAL BUILDINGS

SPECIFIC OCCUPANCY AREAS/HAZARDOUS AREA PROTECTION:
IBC CHAPTER 3, TABLE 302.1.1
NFPA 101 CHAPTER 38
STORAGE ROOMS > 100 SQ FT 1 HOUR SEPARATION OR AUTO SPRINKLERS

TYPE OF CONSTRUCTION:

IBC: CHAPTER 6, TABLE 601: NON-COMBUSTABLE

MINIMUM NUMBER OF EXITS REQUIRED
PER FLOOR LEVEL: 2
PER ROOM WITH >50 OCCUPANTS: 2

EGRESS CAPACITY:
EXIT ACCESS CORRIDOR WIDTH:
DOOR WIDTH

MINIMUM ALLOWABLE
44 IN. CLEAR
32 IN. CLEAR

ARRANGEMENT:
DEAD-END-CORRIDOR
COMMON PATH OF TRAVEL
TRAVEL DISTANCE TO EXIT

MAXIMUM ALLOWABLE
50 FT.
100 FT.
300 FT.

EMERGENCY LIGHTING: EXISTING BATTERY BACK-UP FIXTURES WILL BE RELOCATED AND SUPPLEMENTED AS NECESSARY TO PROVIDE MINIMUM LIGHT LEVELS REQUIRED BY NFPA 101/7.9.2.

EXIT SIGNAGE: INTERNALLY ILLUMINATED EXIT SIGNS WITH BATTERY BACK-UP WILL BE RELOCATED AND SUPPLEMENTED AS NECESSARY IN RESPONSE TO THE REQUIREMENTS OF NFPA 101/7.10.

INTERIOR FINISH: IBC - CHAPTER 8, NFPA 101 - CHAPTERS 10 & 19

WALL AND CEILING FINISHES: (IBC TABLE 803.5)
VERTICAL EXITS & PASSAGEWAYS: NOT APPLICABLE
EXIT ACCESS CORRIDORS: CLASS A OR B
ROOMS & ENCLOSED SPACES: CLASS A, B OR C
FLOOR FINISHES: NO REQUIREMENTS

DETECTION, ALARM, AND COMMUNICATIONS SYSTEMS: EXISTING ZONED FIRE ALARM SYSTEM.

OCCUPANT: NOTIFICATION DEVICES CONFORMING WITH NFPA 9.6 WILL BE RELOCATED AND/OR SUPPLEMENTED AS REQUIRED BY THE PARTITION LAYOUT.

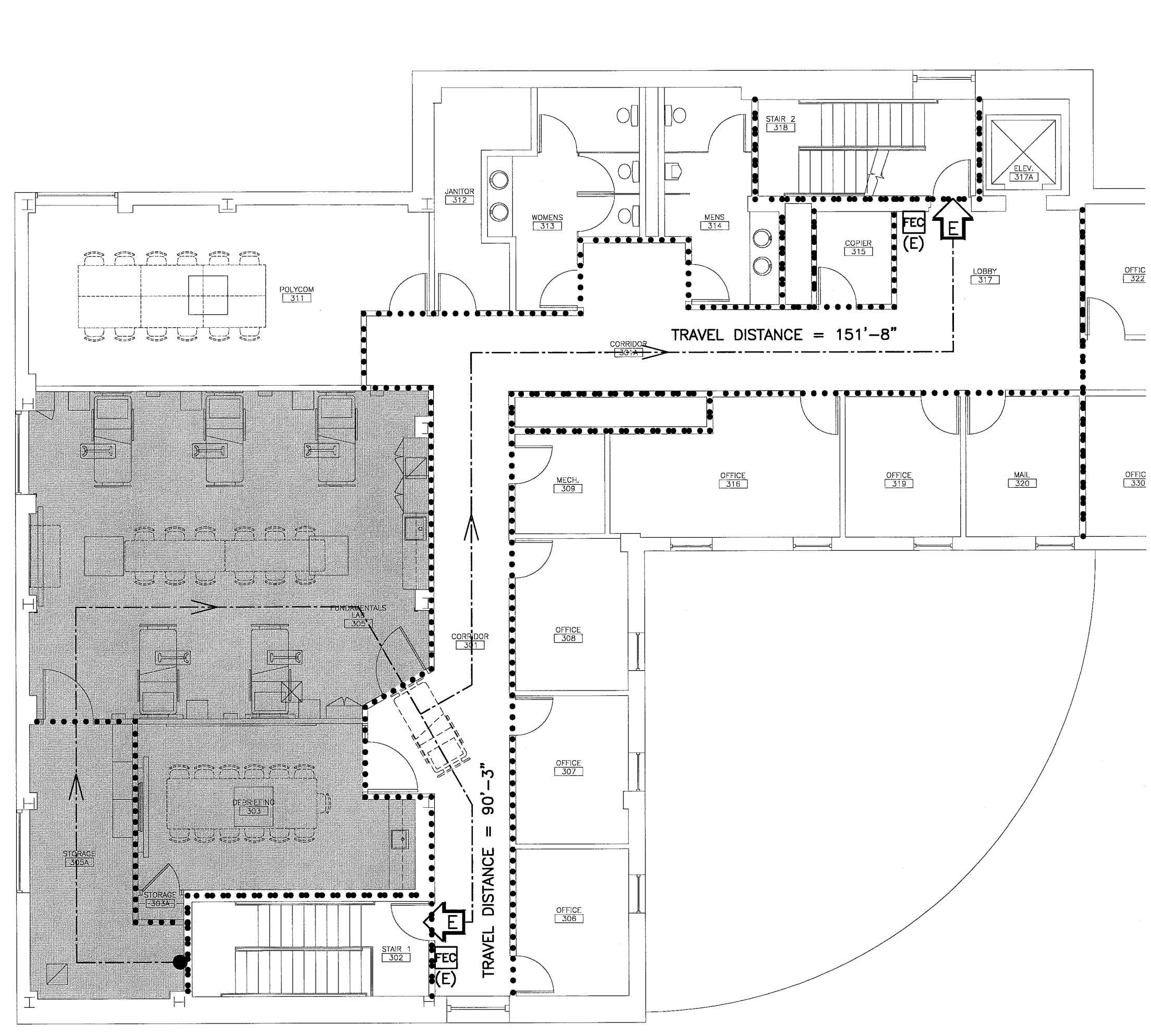
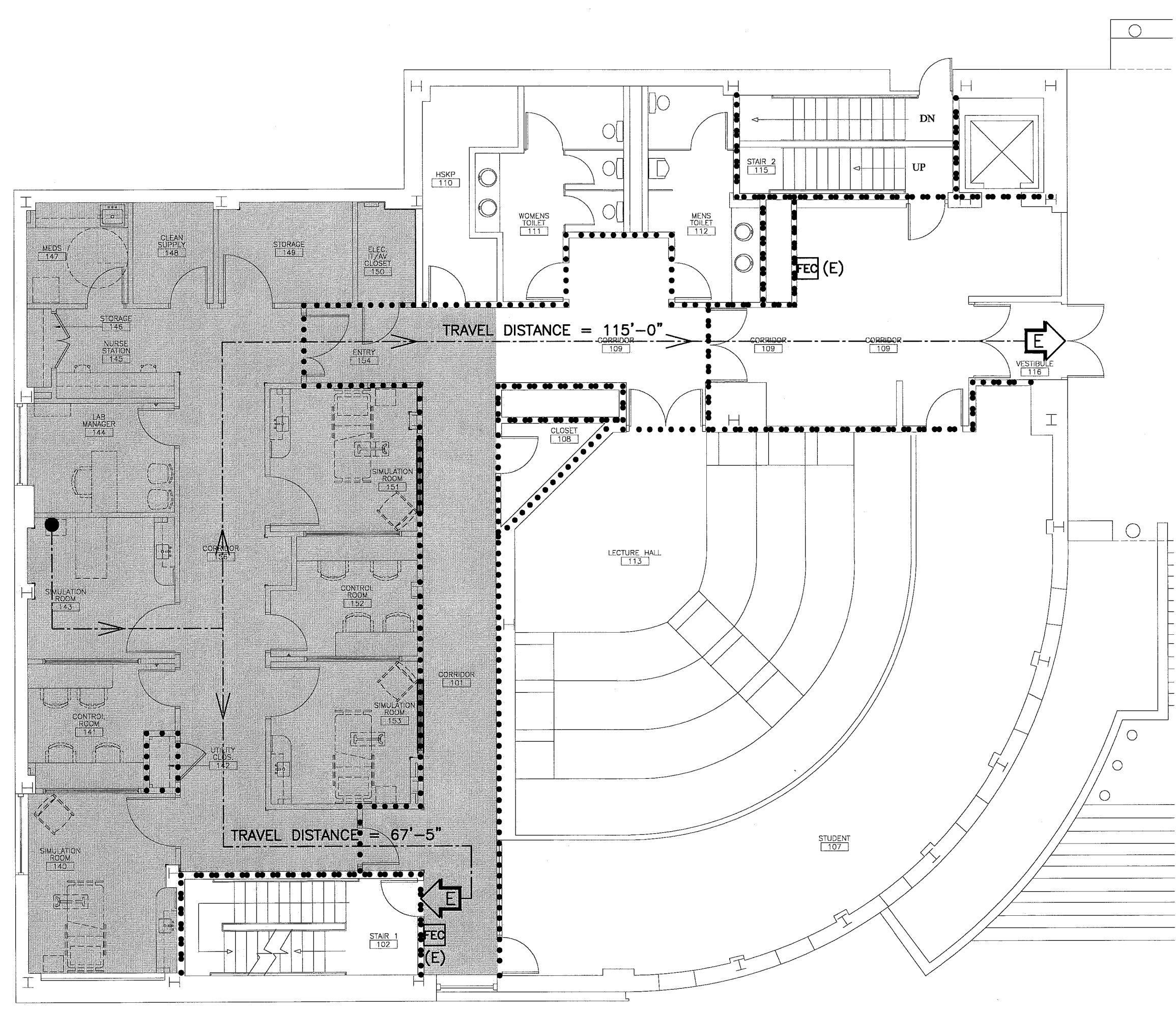
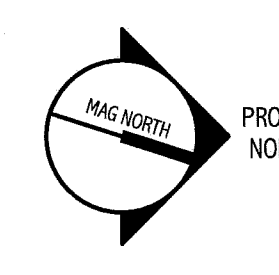
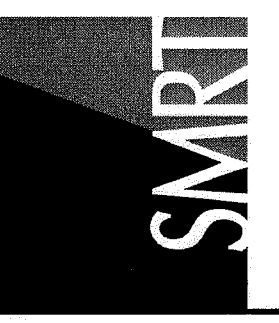
EXTINGUISHMENT REQUIREMENTS:

AUTOMATIC FIRE SUPPRESSION: EXISTING WATER BASED SPRINKLER SYSTEM WILL HAVE HEAD LOCATIONS MODIFIED AS REQUIRED BY THE PARTITION LAYOUT.
PORTABLE FIRE EXTINGUISHERS: EXISTING PORTABLE FIRE EXTINGUISHERS WILL REMAIN.

CORRIDORS: NO REQUIREMENTS.
NEW CONSTRUCTION SHALL MAINTAIN 1 HOUR FIRE RESISTANCE RATING OF EXISTING CORRIDOR WALLS.

144 Fore Street/P.O. Box 618
Portland, Maine 04104
tel. (207) 772-3846
fax. (207) 772-1070
www.smriinc.com

ARCHITECTURE
ENGINEERING
PLANNING
INTERIOR DESIGN
COMMISSIONING

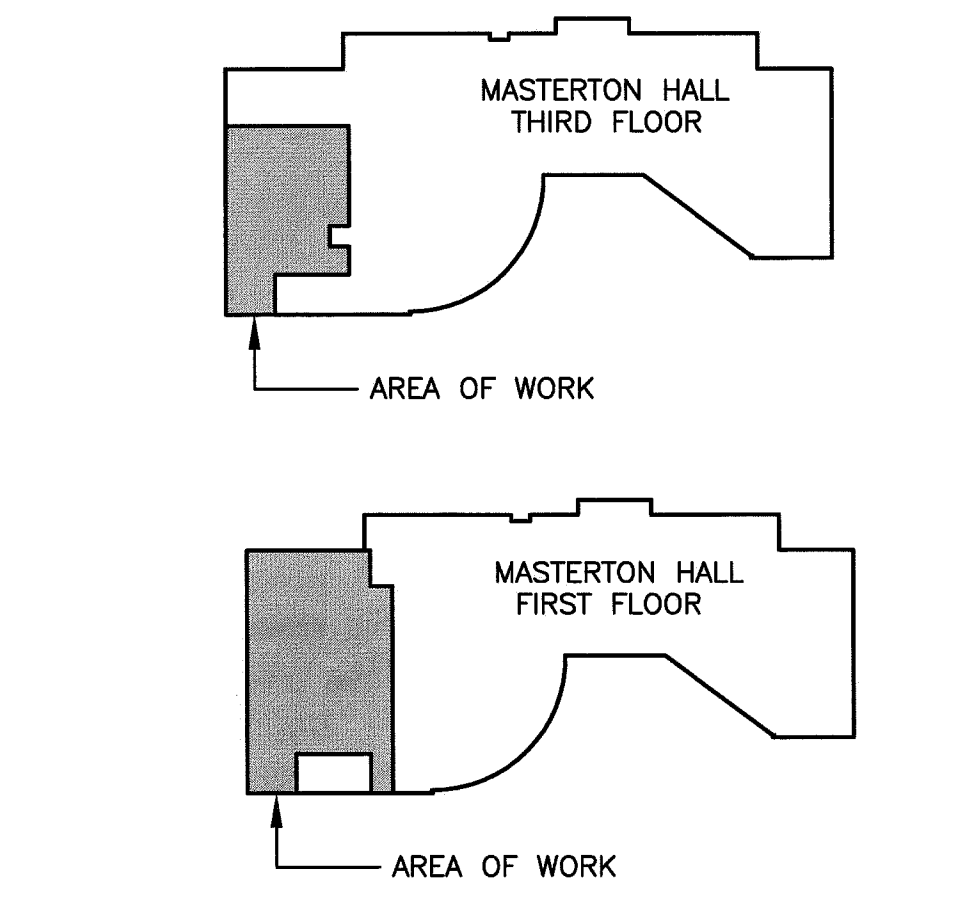


NOTES:

- EACH TRADE TO PROVIDE SMOKE OR FIRE SEALANT AT PENETRATIONS AS REQUIRED FOR WALL TYPE. ALL FIRE SEALANT, FIRE STOPPING, AND SMOKE STOPPING ASSEMBLIES SHALL BE U.L. RATED.
- SEAL ALL PIPE AND DUCT FLOOR PENETRATIONS WITH RATED SEALANT.

LEGEND

- INDICATES 1-HOUR FIRE RATED PARTITION
- INDICATES 2-HOUR FIRE RATED PARTITION
- INDICATED SMOKE BARRIER
- INDICATES SMOKE PARTITION
- ALL PENETRATIONS ARE SEALED TO LIMIT THE PASSAGE OF SMOKE
- FIRE EXTINGUISHER
- FIRE EXTINGUISHER CABINET
- PATH OF EGRESS
- POINT OF EGRESS



UNIVERSITY OF SOUTHERN MAINE
SIMULATION LABORATORY
PORTLAND, MAINE

ISSUED FOR BIDDING & CONSTRUCTION
4-15-11

CURRENT ISSUE STATUS:

NO.	DESCRIPTION	DATE
0	ISSUED FOR BIDDING & CONSTRUCTION	4-15-11

GRAPHIC SCALE:
0" 1"

SCALE: AS NOTED
PROJECT MANAGER: SLE
JC/DRAWN BY: CAH
A/E OF RECORD: SLE
CAD FILE: A-001-10150
PROJECT NO: 10150-00
DATE: 4-15-11

SHEET TITLE:
CODE COMPLIANCE PLAN

SHEET No.
A-001

A1

FIRST FLOOR CODE COMPLIANCE PLAN

1/8" = 1'-0"

A7

THIRD FLOOR CODE COMPLIANCE PLAN

1/8" = 1'-0"

A14

KEY PLAN

NOT TO SCALE

© 2011 SMRI