

RNC RDA MSA  
 21702.01  
 DESIGNED BY:  
 DRAWN BY:  
 CHECKED BY:  
 PROJECT:

UNIVERSITY OF SOUTHERN MAINE  
 COLLEGE OF EDUCATION AND  
 HUMAN DEVELOPMENT  
 Portland, ME 04104

LECTURE HALL RENOVATION  
 AND UPGRADES  
 PAYSON SMITH HALL  
 96 Fairmouth St. - Portland, Maine

MECHANICAL  
 PART PLANS

SCALE: AS NOTED

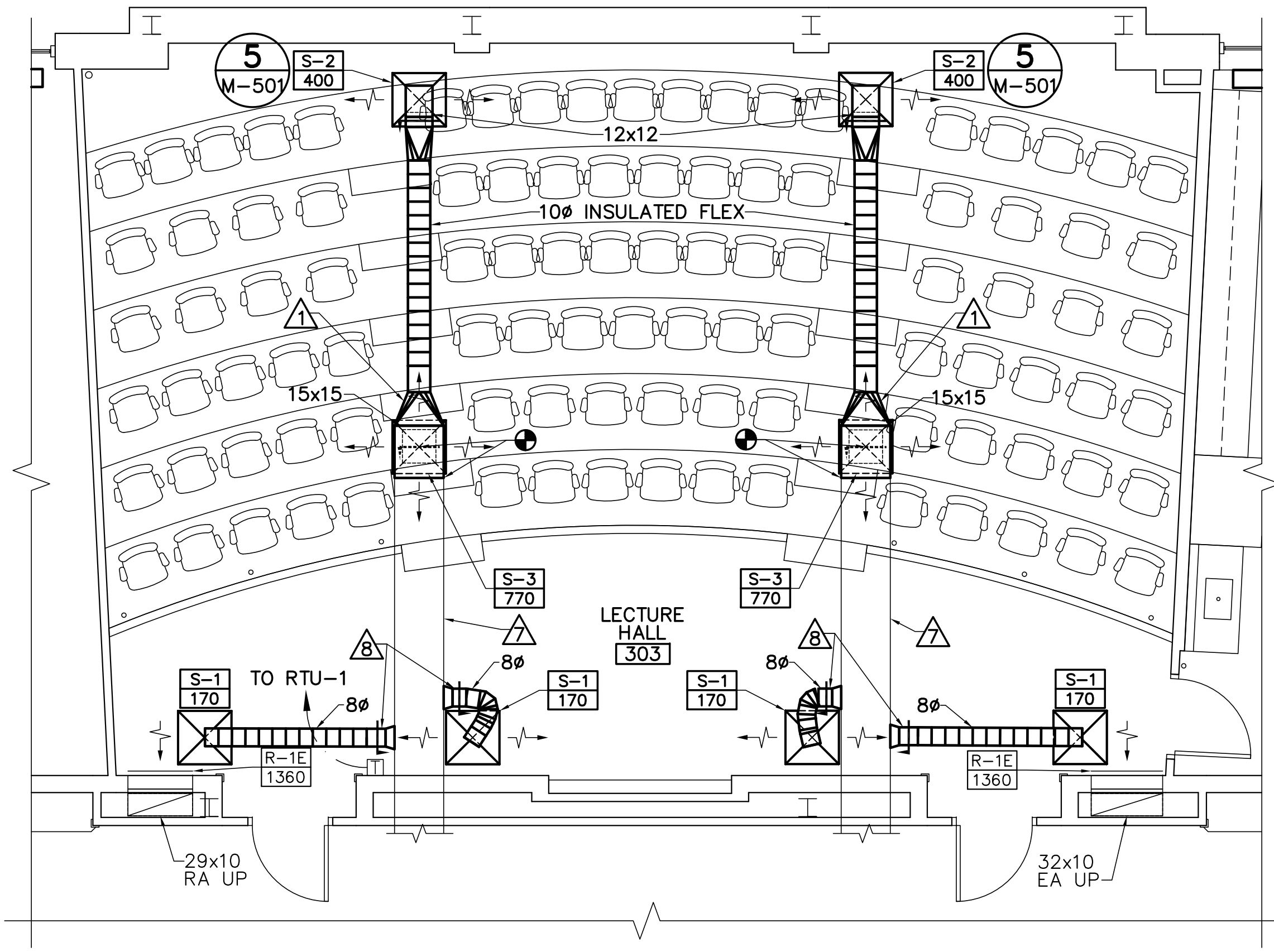
DATE: 01-09-18

DWG: **M-101**

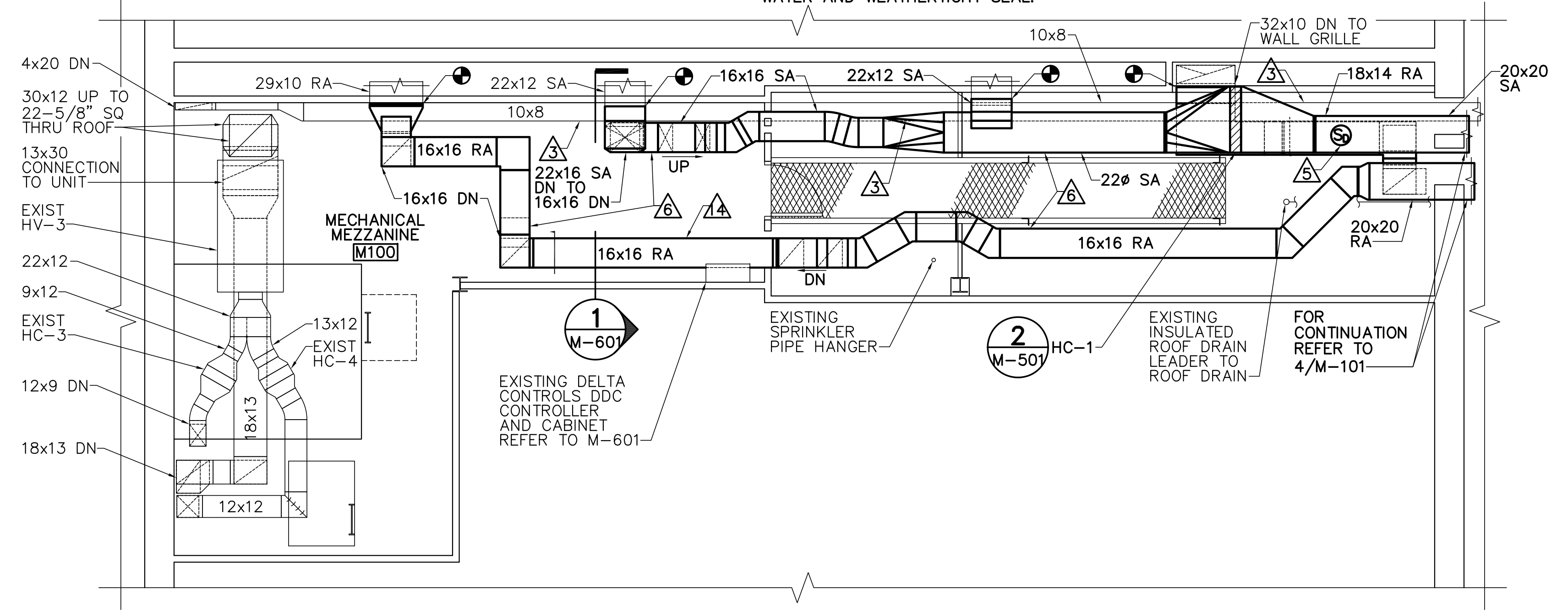
SHEET: **11** of **17**

**DRAWING KEYNOTES**

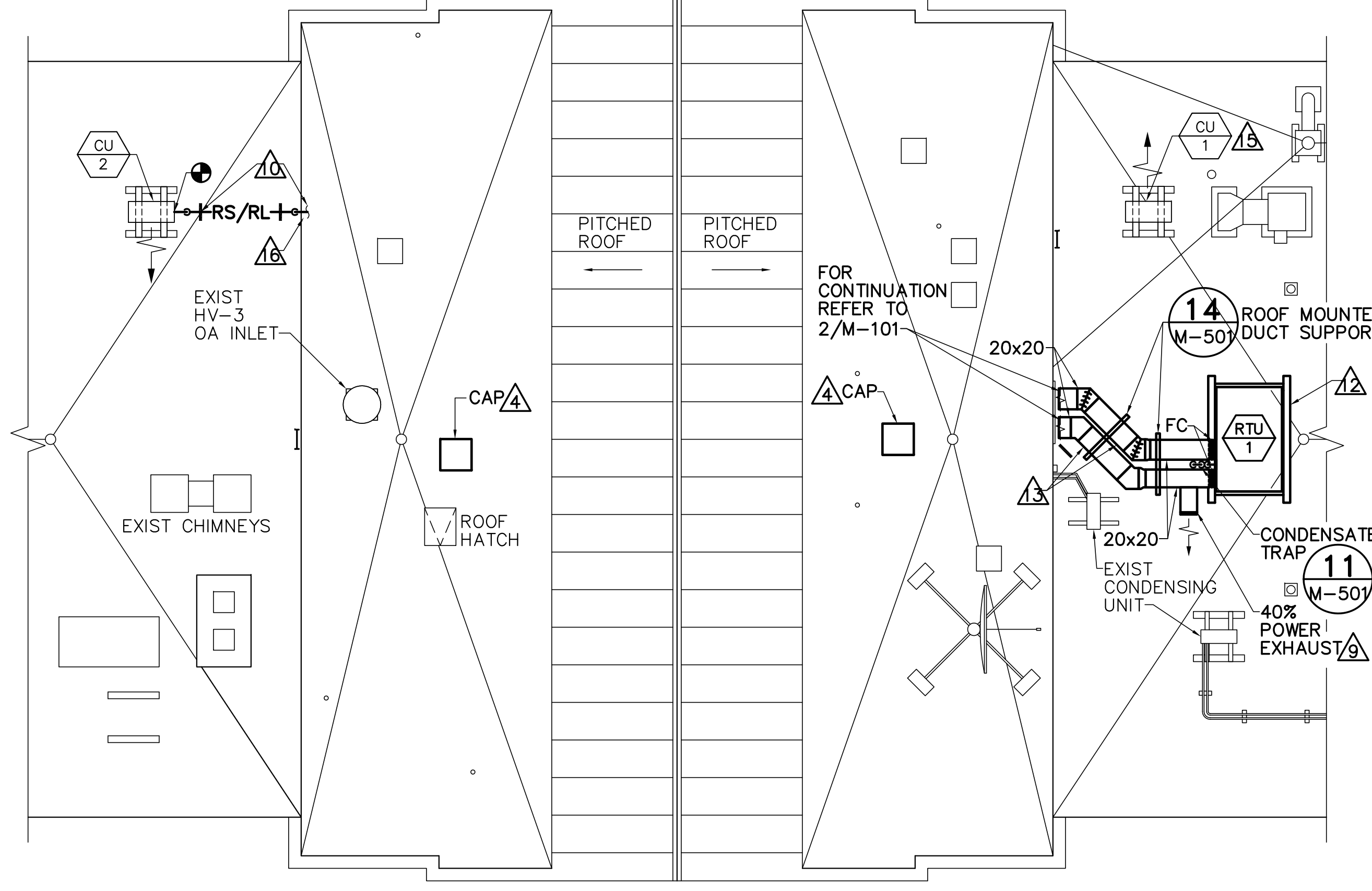
- 1 PROVIDE METAL TRANSITION DUCT.
- 2 PROVIDE TURNING VANES IN ELBOW.
- 3 PROVIDE REPLACEMENT DUCTWORK SUPPORTS FOR EXISTING DUCTWORK WHERE NEEDED TO FACILITATE DUCTWORK INSTALLATION.
- 4 REFER TO ARCHITECTURAL DRAWINGS FOR CAPPING AND INSULATION DETAILS.
- 5 DUCT SMOKE DETECTOR LOCATION. REFER TO ELECTRICAL DRAWINGS FOR DUCT SMOKE DETECTOR DETAILS.
- 6 PROVIDE INSULATION ON SUPPLY AND RETURN DUCTWORK.
- 7 PROVIDE INSULATION ON EXISTING SUPPLY DUCTWORK THROUGHOUT LECTURE HALL CEILING CAVITY AND INTO THE MECHANICAL MEZZANINE.
- 8 ALIGN DUCT CONNECTIONS TO PERMIT FLEX DUCT TO PASS STRAIGHT THROUGH OPENING IN OPEN WEB CEILING JOISTS.
- 9 PROVIDE POWERED EXHAUST. INSTALL IN ACCORDANCE WITH MANUFACTURER'S WRITTEN INSTRUCTIONS. REFER TO PACKAGED ROOFTOP HVAC UNIT SCHEDULE FOR DETAILS.
- 10 RE-INSTALL TEMPORARILY STORED LINESET ENCLOSURE AND PROVIDE ROOF MOUNTED SUPPORTS. BASIS OF DESIGN SUPPORTS: EATON DURA-BLOK. PROVIDE ADDITIONAL MATCHING ENCLOSURE COMPONENTS TO COMPLETE INSTALLATION AS RECOMMENDED BY ENCLOSURE MANUFACTURER WRITTEN INSTALLATION INSTRUCTIONS, INCLUDING BUT NOT LIMITED TO COUPLINGS ELBOWS AND END CAPS. PROVIDE POWER CABLE AND LINESET SIZED IN ACCORDANCE WITH EQUIPMENT MANUFACTURER'S RECOMMENDATIONS. FOR CONTINUATION REFER TO 2/M-102.
- 11 PROVIDE NECESSARY HARDWARE, EQUIPMENT AND LABOR TO SECURE ROOFTOP UNIT TO ELEVATED STRUCTURAL STEEL SUPPORT FRAME.
- 12 PROVIDE PITCH TO TOP OF DUCTWORK INSULATION TO FACILITATE DRAINAGE OF WATER OFF TOP OF DUCT.
- 13 PROVIDE RIGID DUCT INSULATION AND METAL ADHESIVE JACKET ON LENGTH OF DUCTWORK LESS THAN 60 INCHES ABOVE FINISHED FLOOR.
- 14 CONDENSING UNIT CU-1 WILL REMAIN IN PLACE. PLANS FOR ITS REUSE ARE NOT IN THE PROJECT SCOPE.
- 15 CORE DRILL AND PROVIDE SLEEVE SEAL SYSTEM FOR ELECTRICAL CONDUIT AND REFRIGERANT LINESET PIPING FOR A WATER AND WEATHERTIGHT SEAL.



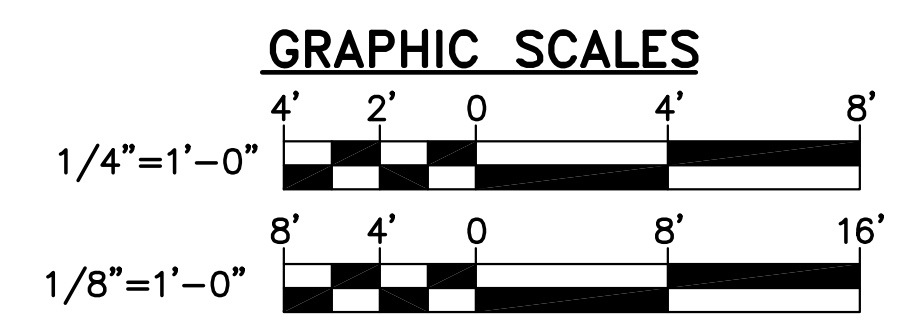
**1 LECTURE HALL 303 MECHANICAL PART PLAN**  
 M-101 SCALE: 1/4"=1'-0"  
 PLAN NORTH



**2 MECHANICAL MEZZANINE DUCTWORK PART PLAN**  
 M-101 SCALE: 1/4"=1'-0"  
 PLAN NORTH



**3 MECHANICAL ROOFTOP PART PLAN**  
 M-101 SCALE: 1/8"=1'-0"  
 PLAN NORTH



CHECK GRAPHIC SCALES BEFORE USING