

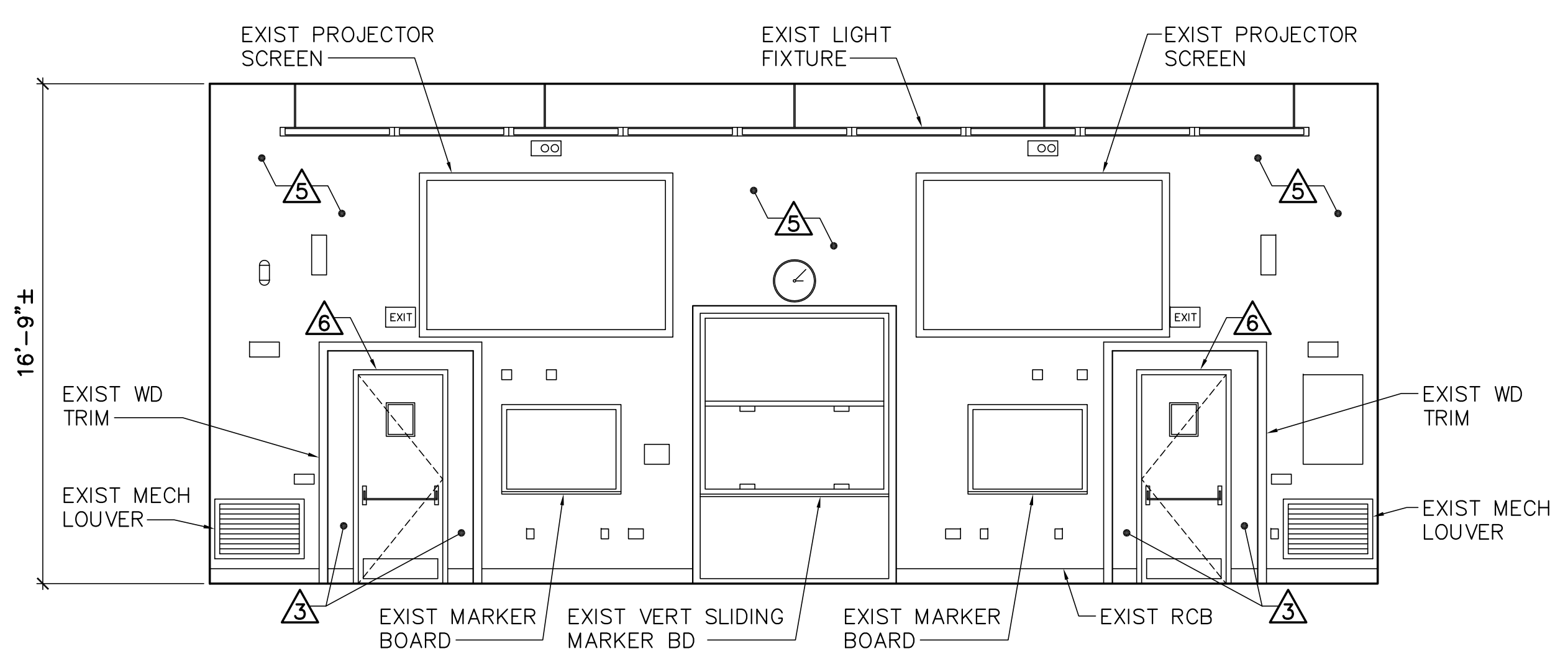
JMC  
 CRR  
 JMC  
 DESIGNED BY:  
 DRAWN BY:  
 CHECKED BY:  
 PROJECT:  
 21702.01

**UNIVERSITY OF SOUTHERN MAINE  
 COLLEGE OF EDUCATION AND  
 HUMAN DEVELOPMENT**  
 Portland, ME 04104

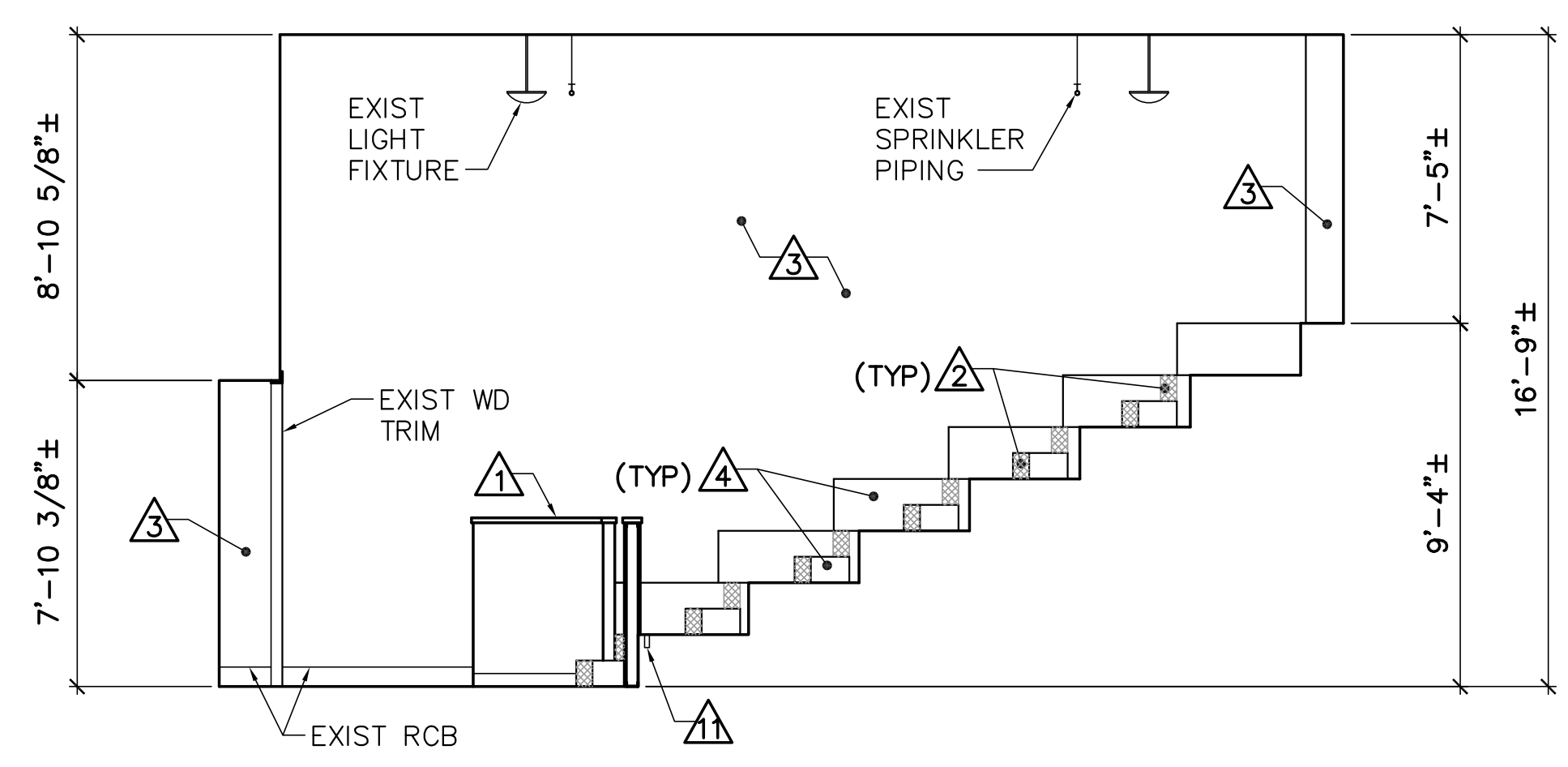
**LECTURE HALL RENOVATION  
 AND UPGRADES  
 PAYSON SMITH HALL**  
 96 Falmouth St., Portland, Maine

**INTERIOR  
 ELEVATIONS**

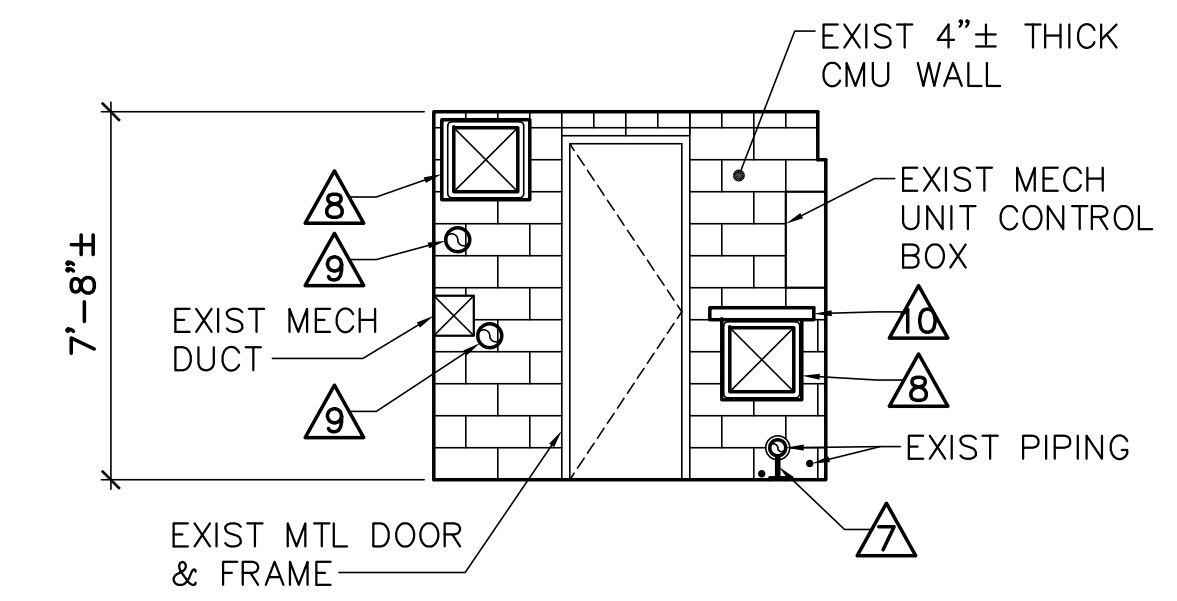
SCALE: AS NOTED  
 DATE: 01-09-18  
 DWG.: **AE201**  
 SHEET: **8** OF **17**



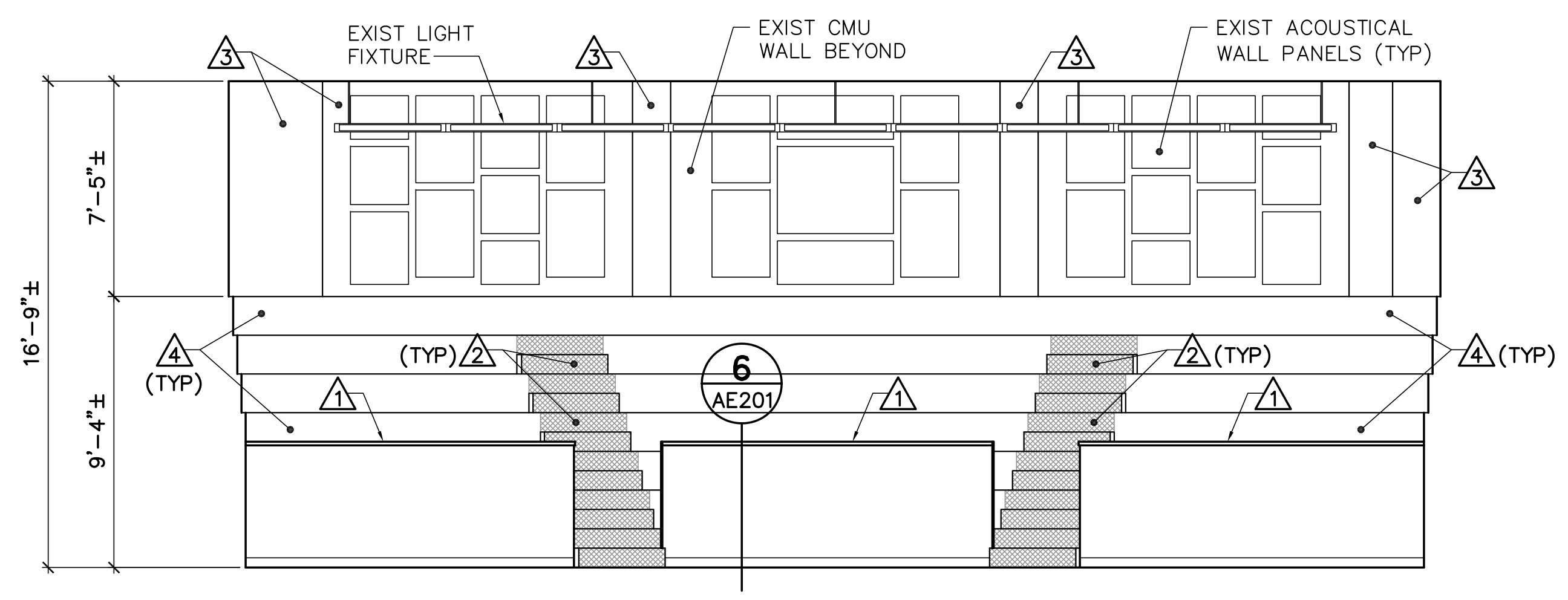
**1 INTERIOR ELEVATION**  
 AE101/AE201 SCALE: 1/4"=1'-0"



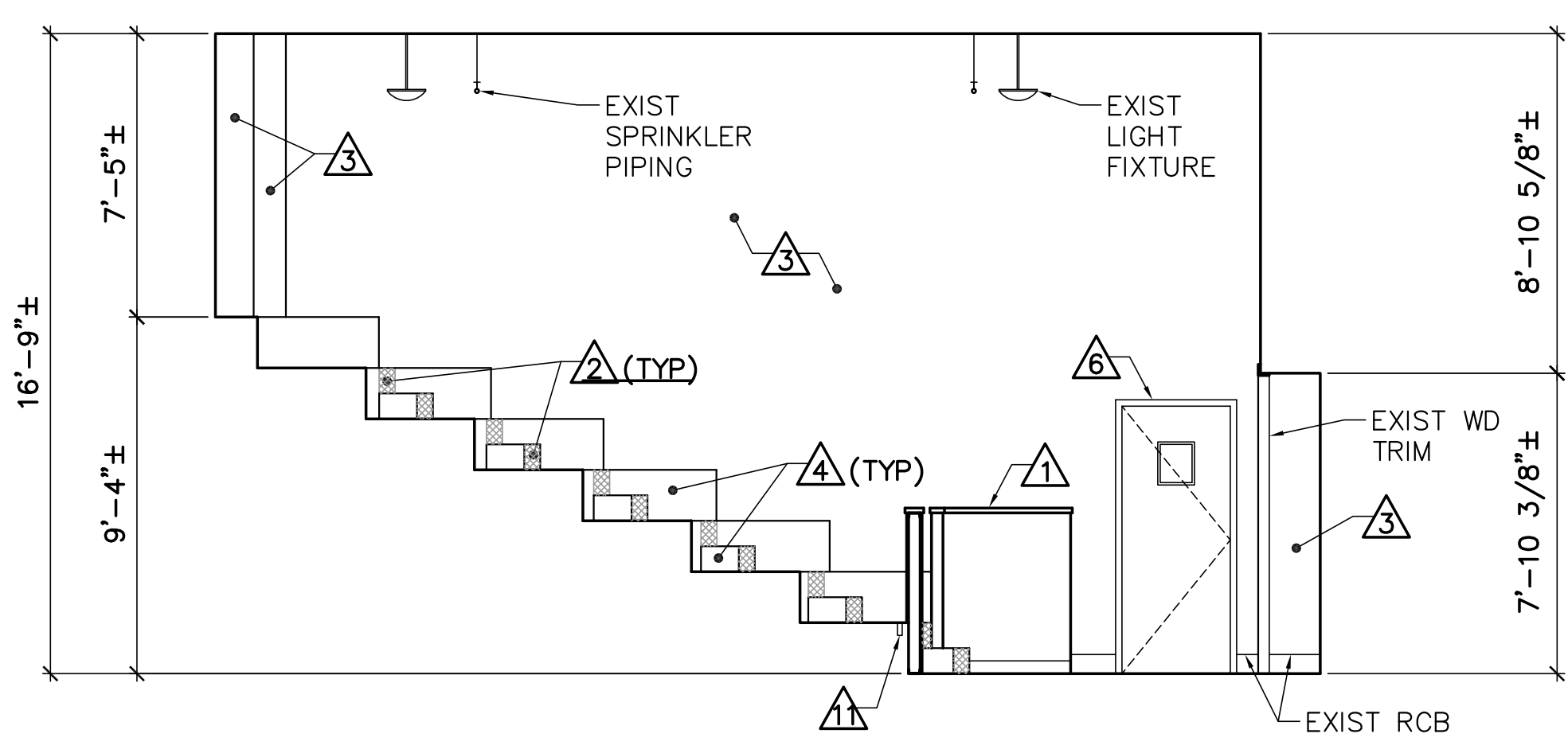
**2 INTERIOR ELEVATION**  
 AE101/AE201 SCALE: 1/4"=1'-0"



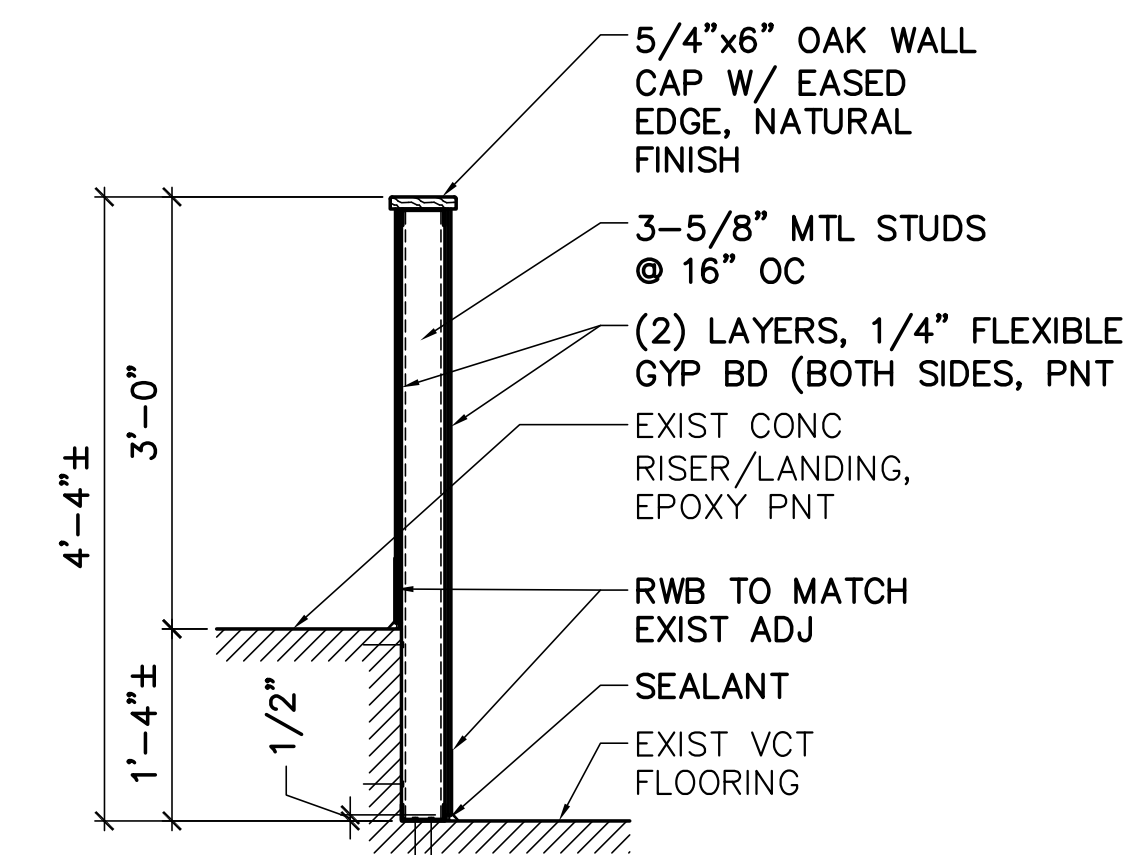
**5 INTERIOR ELEVATION**  
 AE101/AE201 SCALE: 1/4"=1'-0"



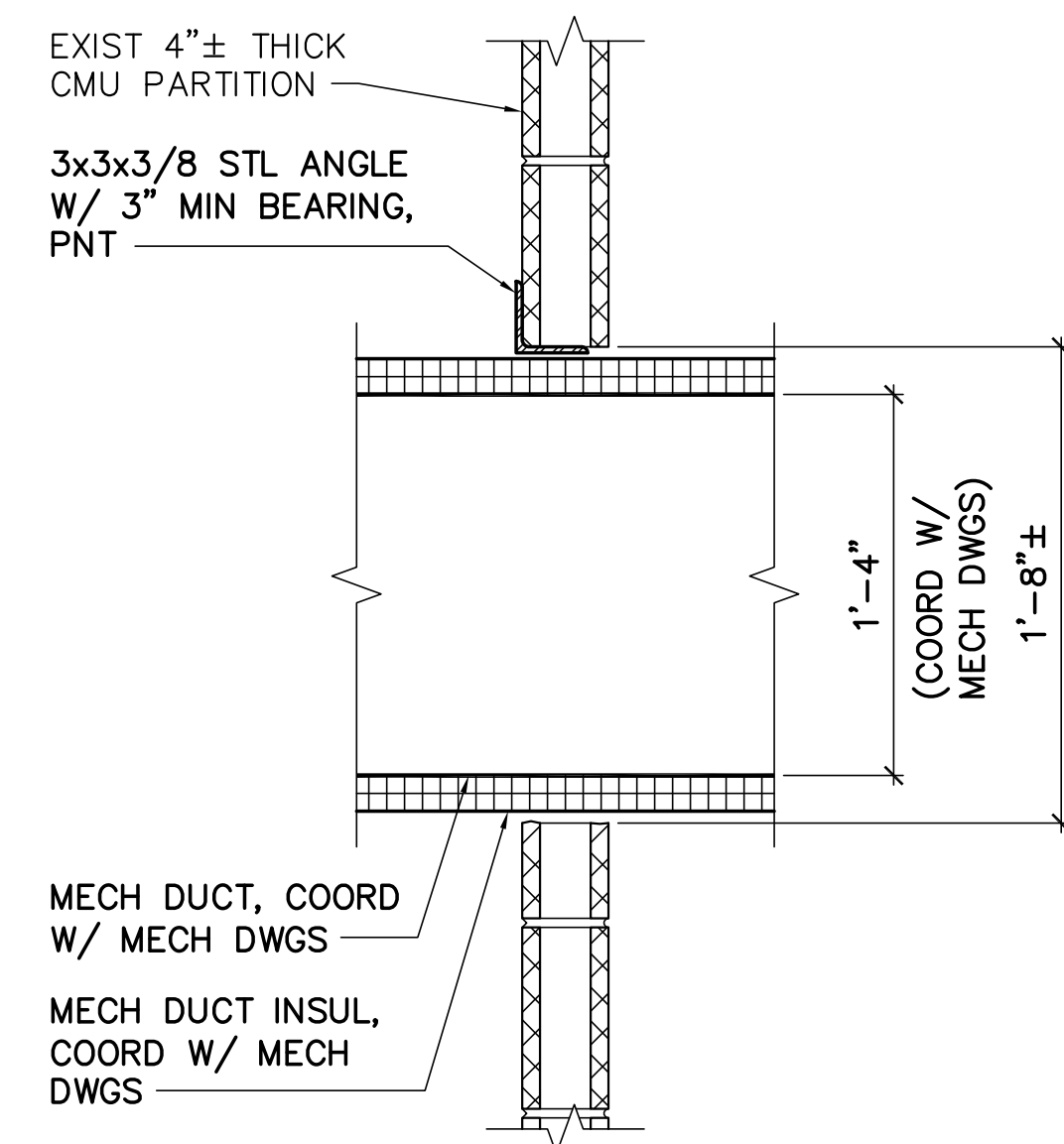
**3 INTERIOR ELEVATION**  
 AE101/AE201 SCALE: 1/4"=1'-0"



**4 INTERIOR ELEVATION**  
 AE101/AE201 SCALE: 1/4"=1'-0"



**6 PARTITION DETAIL**  
 AE201 SCALE: 3/4"=1'-0"



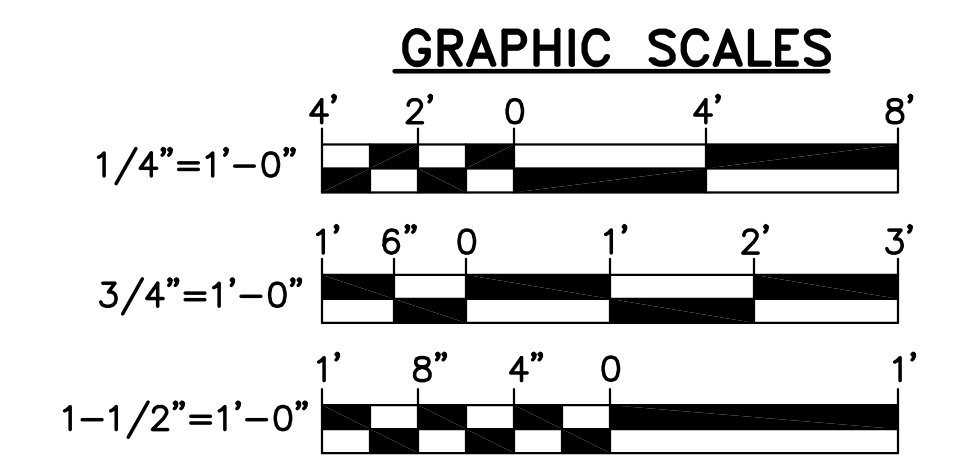
**7 MECHANICAL DUCT PENETRATION (INTERIOR WALL)**  
 AE201 SCALE: 1-1/2"=1'-0"

**KEYNOTES (THIS SHEET ONLY)**

- 1 3-5/8" METAL STUDS HALF-WALL PARTITION. SEE DETAIL 6/AE201.
- 2 CARPET FLOORING AT STAIR TREADS AND RISERS.
- 3 PAINT EXISTING CMU WALL.
- 4 APPLY EPOXY FLOOR FINISH TO EXISTING CONCRETE RISERS/PLATFORM. BASIS-OF-DESIGN PRODUCT "MACRO POXY", SHERWIN WILLIAMS.
- 5 PATCH AND PAINT EXISTING GYPSUM BOARD PARTITION.
- 6 PAINT EXISTING HOLLOW METAL DOOR FRAME.
- 7 FLOOR MOUNTED PIPE SUPPORT. COORDINATE WITH MECHANICAL DRAWINGS.
- 8 MECHANICAL DUCT WITH INSULATION. COORDINATE WITH MECHANICAL DRAWINGS.
- 9 MECHANICAL PIPING WITH INSULATION. COORDINATE WITH MECHANICAL DRAWINGS.
- 10 3x3x1/4 STEEL LINTEL WITH 3" MINIMUM BEARING AT ENDS. SEE DETAIL 7/AE201.
- 11 GRIND STEEL PIPE SMOOTH AND FILL HOLE WITH NON-SHRINK GROUT.

**GENERAL SHEET NOTES**

- 1. LECTURE HALL SEATING NOT SHOWN FOR CLARITY.
- 2. FINISH COLORS TO BE SELECTED BY OWNER.



CHECK GRAPHIC SCALES BEFORE USING