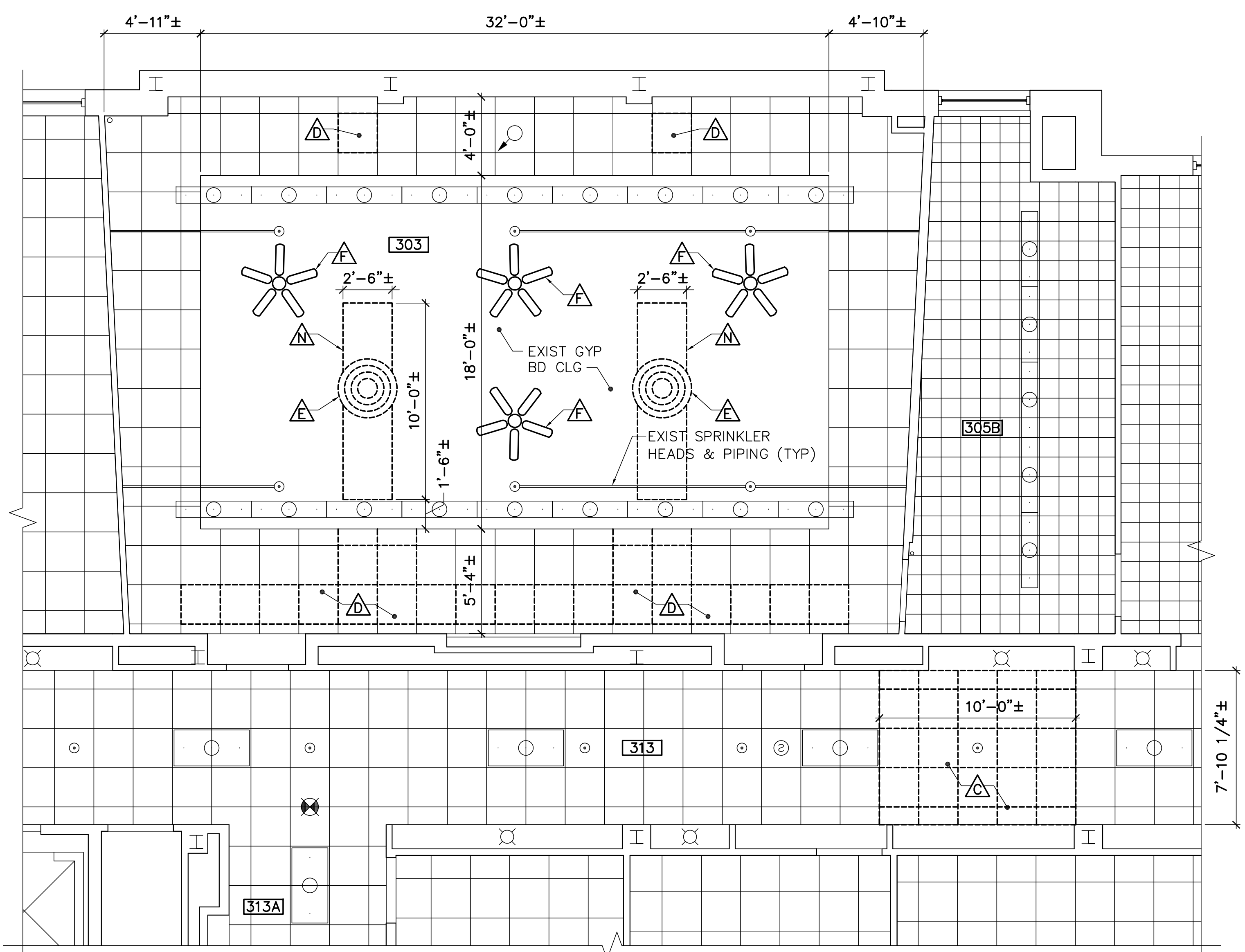
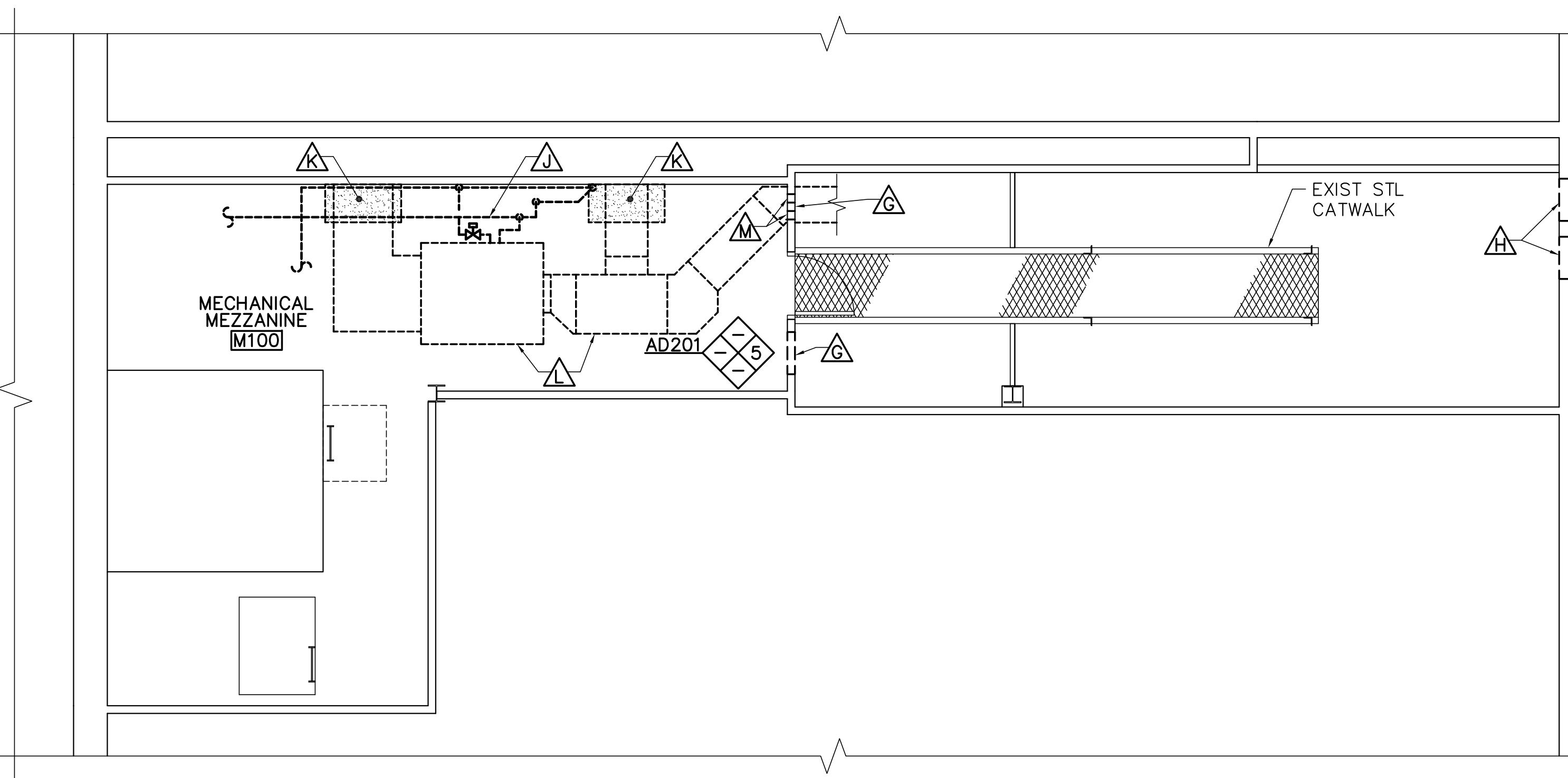


**1 ENLARGED LECTURE HALL REMOVALS FLOOR PLAN**  
 AD101 SCALE: 1/4"=1'-0"  
 PLAN NORTH



**2 ENLARGED LECTURE HALL REMOVALS REFLECTED CEILING PLAN**  
 AD101 SCALE: 1/4"=1'-0"  
 PLAN NORTH



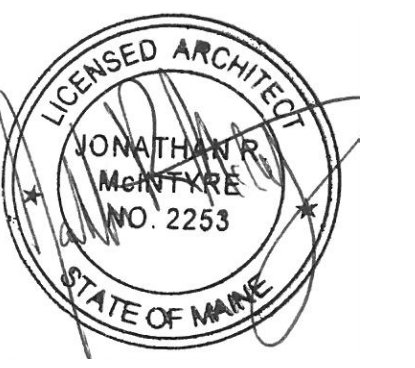
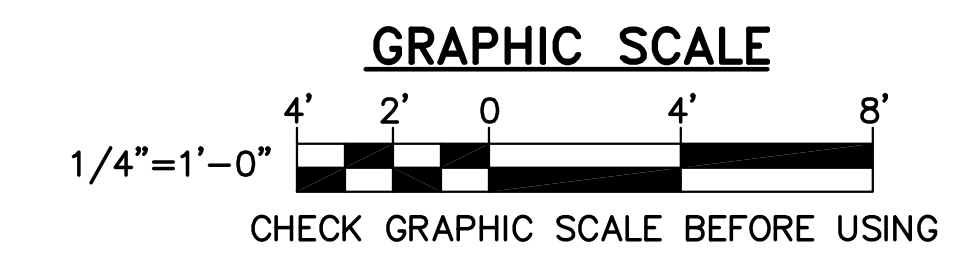
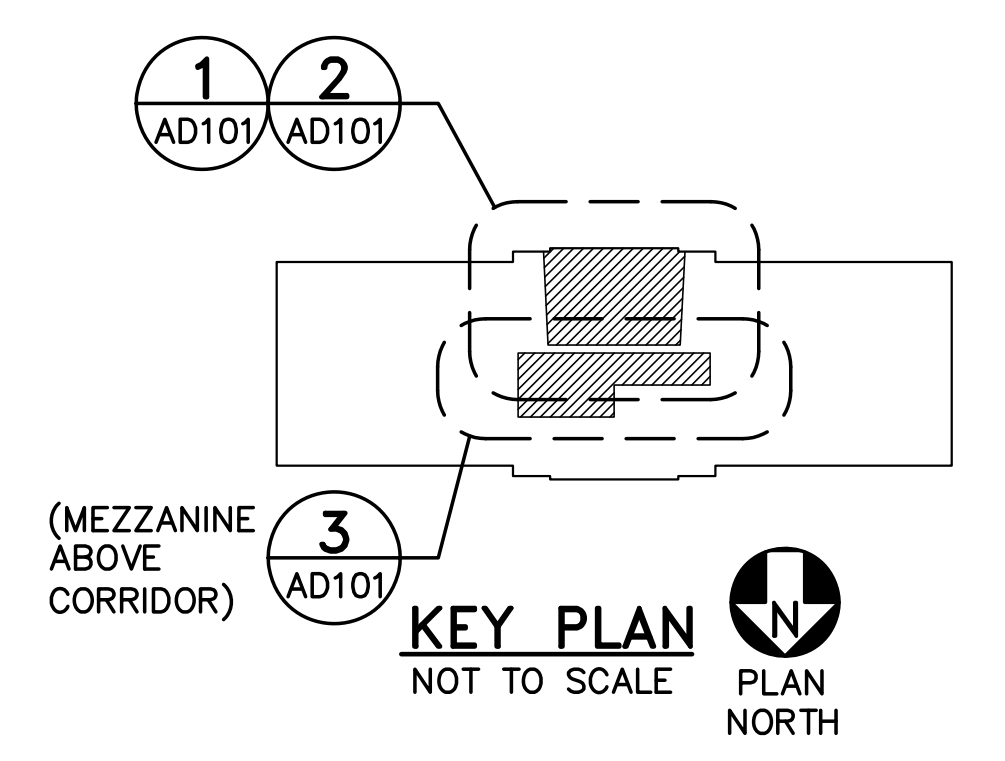
**3 ENLARGED MECHANICAL MEZZANINE REMOVALS FLOOR PLAN**  
 AD101 SCALE: 1/4"=1'-0"  
 PLAN NORTH

**REMOVALS KEYNOTES (THIS SHEET ONLY)**

- (A) REMOVE 2'-6"± HIGH x 10'-0"± LONG STEEL PIPE GUARDRAIL FLUSH TO CONCRETE.
- (B) REMOVE CARPET AND ADHESIVE.
- (C) REMOVE AND STORE EXISTING ACOUSTICAL CEILING TILES AND SUSPENSION SYSTEM FOR REINSTALLATION AS REQUIRED TO INSTALL MECHANICAL UNIT IN MECHANICAL MEZZANINE. COORDINATE WITH MECHANICAL AND STRUCTURAL REMOVALS DRAWINGS.
- (D) REMOVE AND STORE FOR REINSTALLATION ACOUSTICAL CEILING PANELS AS REQUIRED FOR MECHANICAL DIFFUSER INSTALLATION.
- (E) REMOVE MECHANICAL DIFFUSERS. COORDINATE WITH MECHANICAL REMOVALS DRAWINGS.
- (F) REMOVE CEILING FANS. COORDINATE WITH ELECTRICAL REMOVALS DRAWINGS.
- (G) SAWCUT AND REMOVE PORTION OF 4"± THICK CMU WALL FOR MECHANICAL DUCT PENETRATION. REFER TO INTERIOR ELEVATION 5/AD201. COORDINATE WITH MECHANICAL DRAWINGS.
- (H) SAWCUT AND REMOVE 1'-8"± x 1'-8"± PORTION OF 1'-4"± THICK EXTERIOR MASONRY WALL FOR MECHANICAL DUCT WORK PENETRATION. COORDINATE WITH MECHANICAL DRAWINGS.
- (I) REMOVE AND ABATE APPROXIMATELY 20 LF ASBESTOS CONTAINING 1-1/2" THICK PIPE INSULATION. COORDINATE WITH MECHANICAL REMOVALS.
- (J) REMOVE PORTION OF PLASTER CEILING TO ACCOMMODATE MECHANICAL DUCT RECONFIGURATION. COORDINATE SIZE AND LOCATIONS IN FIELD AND WITH MECHANICAL DRAWINGS.
- (K) REMOVE MECHANICAL EQUIPMENT AND DUCT WORK. COORDINATE WITH MECHANICAL REMOVALS DRAWINGS FOR ALL MECHANICAL REMOVALS.
- (L) CORE DRILL 6"± DIAMETER PIPE PENETRATION IN 4"± THICK CMU PARTITION. COORDINATE WITH MECHANICAL DRAWINGS.
- (M) REMOVE PORTION OF GYPSUM BOARD CEILING TO INSULATE EXISTING MECHANICAL DUCT. EXISTING STEEL BRIDGING TO REMAIN.

**GENERAL SHEET NOTES**

1. ALL ITEMS ON THIS SHEET ARE EXISTING UNLESS NOTED OTHERWISE.
2. COORDINATE REMOVALS WITH MECHANICAL, PLUMBING, ELECTRICAL AND STRUCTURAL DRAWINGS.
3. PARTIAL MECHANICAL REMOVALS IN MEZZANINE SHOWN FOR CLARITY. COORDINATE ENTIRE MECHANICAL REMOVALS WITH MECHANICAL DRAWINGS.



DESIGNED BY: JMC  
 DRAWN BY: CRR  
 CHECKED BY: JMC  
 PROJECT: 21702.01

UNIVERSITY OF SOUTHERN MAINE  
 COLLEGE OF EDUCATION AND HUMAN DEVELOPMENT  
 Portland, ME 04104

LECTURE HALL RENOVATION AND UPGRADES  
 PAYSON SMITH HALL  
 96 Falmouth St., Portland, Maine

**REMOVALS FLOOR PLAN**

SCALE: AS NOTED  
 DATE: 01-09-18  
 DWG.: AD101  
 SHEET: 4 OF 17