

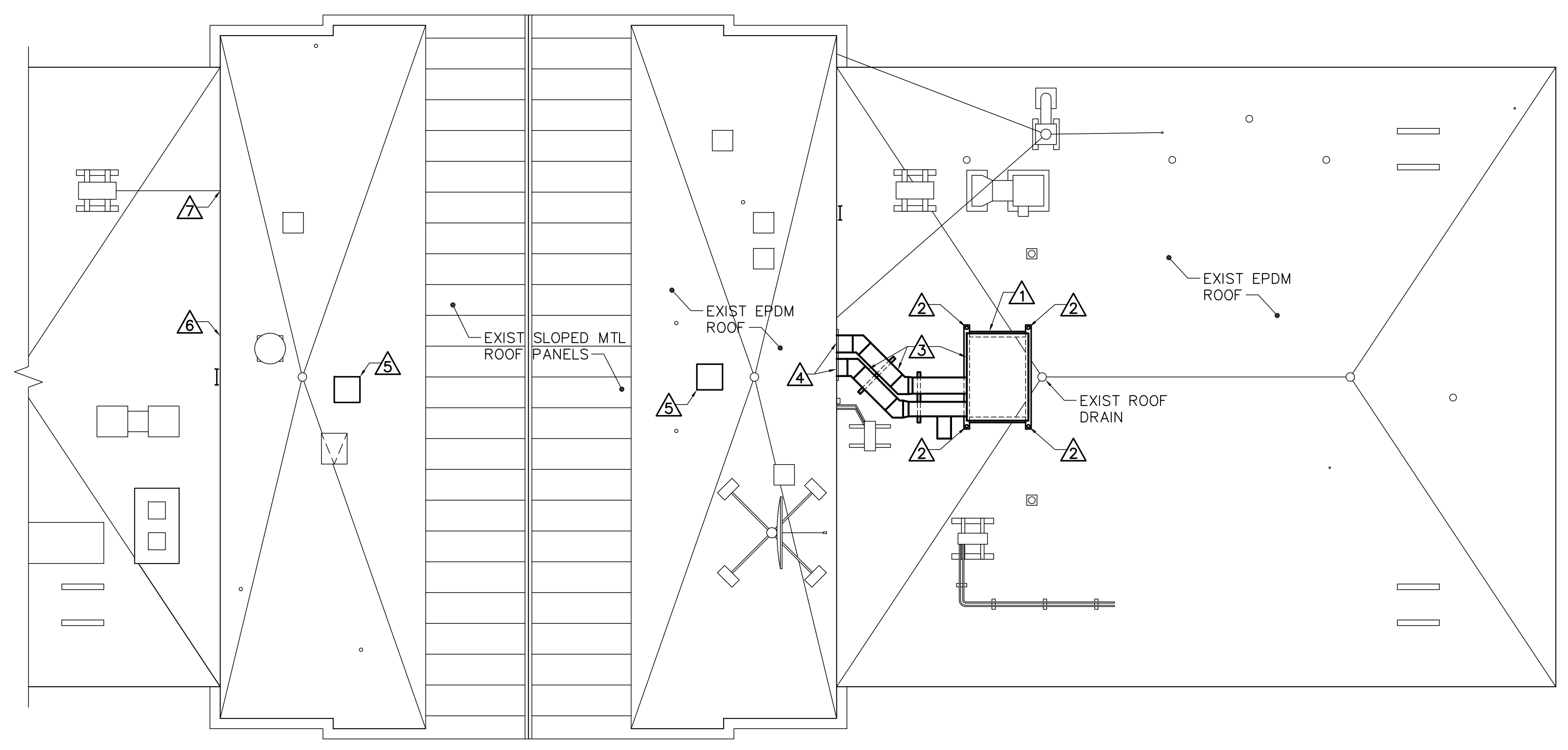
JMC  
CRR  
JMC  
DESIGNED BY:  
DRAWN BY:  
CHECKED BY:  
PROJECT:  
21702.01

UNIVERSITY OF SOUTHERN MAINE  
 COLLEGE OF EDUCATION AND  
 HUMAN DEVELOPMENT  
 Portland, ME 04104

LECTURE HALL RENOVATION  
 AND UPGRADES  
 PAYSON SMITH HALL  
 96 Falmouth St., Portland, Maine

PARTIAL ROOF  
 PLAN AND  
 DETAILS

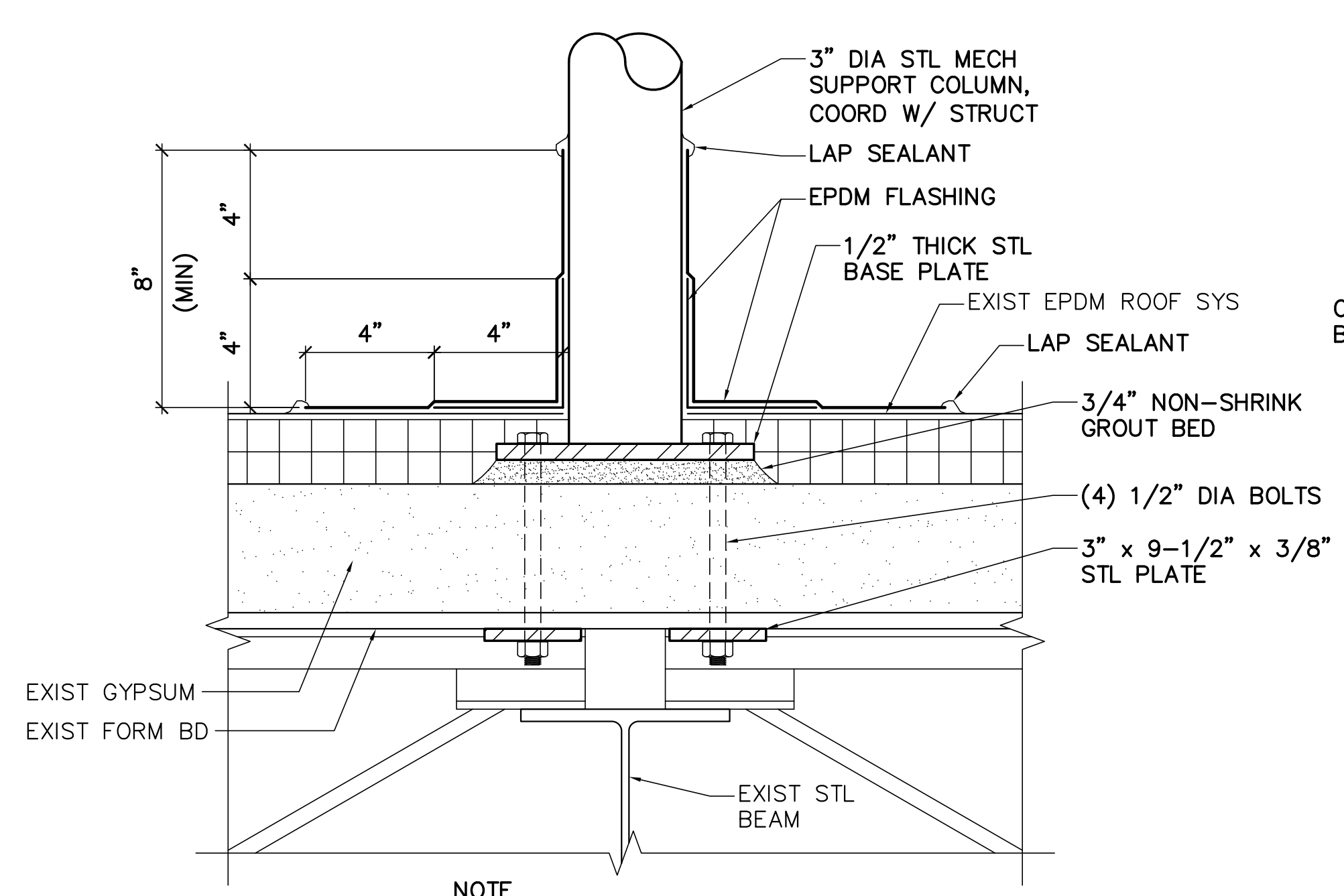
SCALE: AS NOTED  
 DATE: 01-09-18  
 DWG.: AE120  
 SHEET: 7 OF 17



**1 PARTIAL ROOF PLAN**  
 AE120 SCALE: 1/8"=1'-0"  
 PLAN NORTH

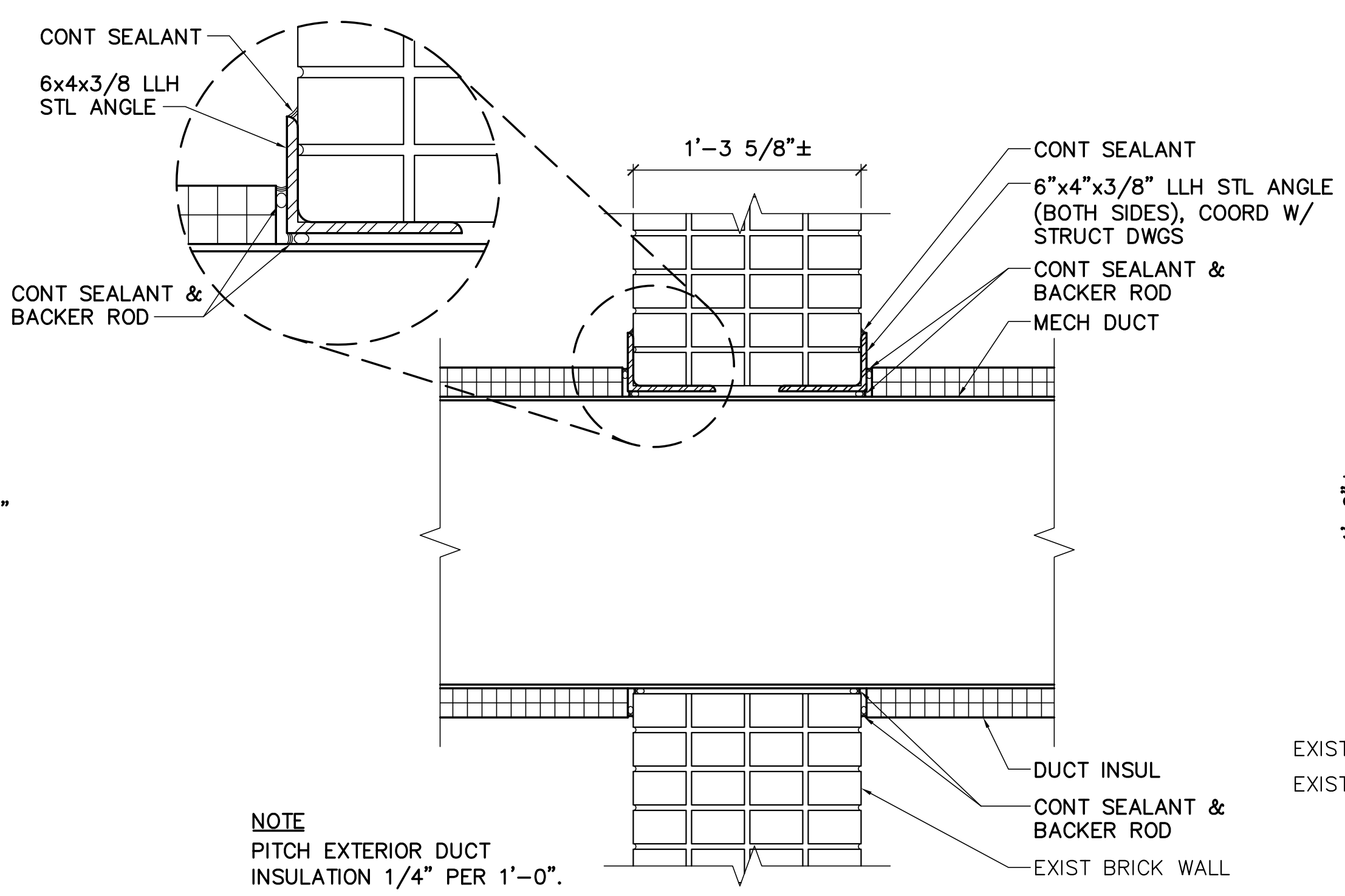
- KEYNOTES (THIS SHEET ONLY)**
- 1 STEEL MECHANICAL EQUIPMENT SUPPORT. SEE DRAWING SF101 FOR LOCATION AND DETAILS.
  - 2 EPDM FLASHING AT 3" DIAMETER EQUIPMENT SUPPORT POST. SEE DETAIL 2/AE120.
  - 3 MECHANICAL AIR HANDLING UNIT AND DUCT WORK. COORDINATE WITH MECHANICAL DRAWINGS.
  - 4 PERIMETER SEALANT AT DUCT PENETRATION. SEE DETAIL 3/AE120.
  - 5 (2) LAYERS, 3/4" PLYWOOD DECKING AT EXISTING ABANDONED 2'-0"± x 2'-0"± ROOF CURB. SEE DETAIL 4/AE120.
  - 6 MORTAR PATCH AT REMOVED LINE-SET PIPING PENETRATION.
  - 7 PENETRATION SEALANT AT LINE-SET PIPING PENETRATION.

- GENERAL SHEET NOTES**
1. COORDINATE ROOF PLAN WITH STRUCTURAL AND MECHANICAL DRAWINGS.
  2. PROVIDE EPDM FLASHING TO MAINTAIN EXISTING ROOF MANUFACTURERS WARRANTY.
  3. PERFORM WORK TO MAINTAIN EXISTING EPDM ROOF SYSTEM WARRANTY.



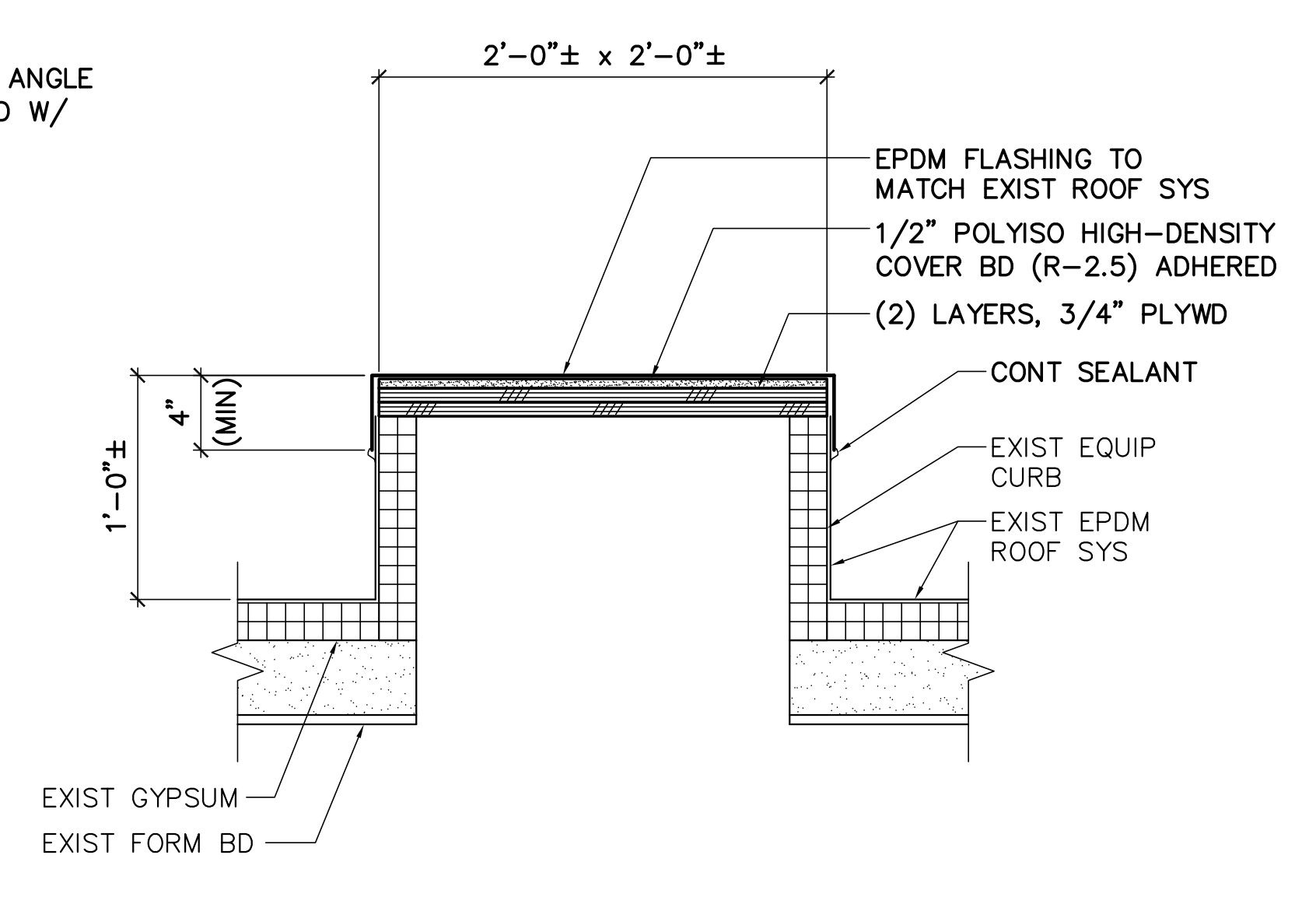
**2 EQUIP SUPPORT FLASHING DETAIL**  
 AE120 SCALE: 3"=1'-0"

NOTE  
 COORDINATE WITH STRUCTURAL  
 DETAIL 3/SF101.

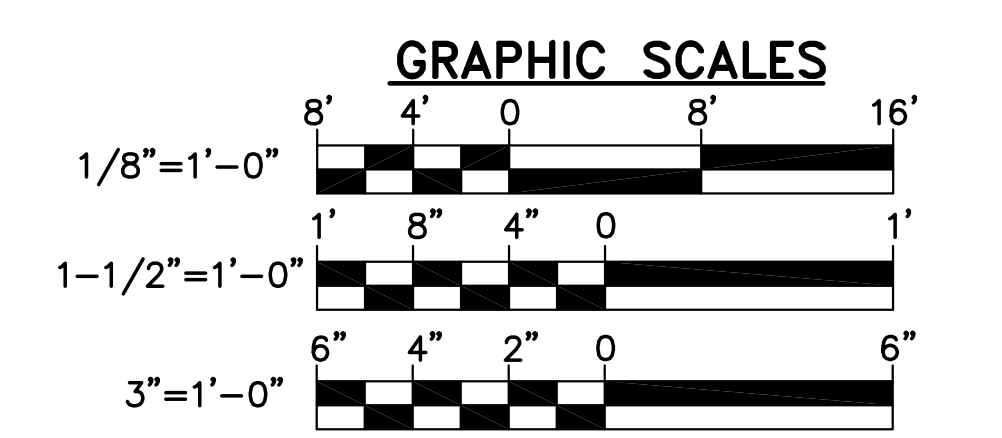


**3 DUCT PENETRATION DETAIL (EXTERIOR WALL)**  
 AE120 SCALE: 1-1/2"=1'-0"

NOTE  
 PITCH EXTERIOR DUCT  
 INSULATION 1/4" PER 1'-0".



**4 EXIST EQUIP CURB CAP DETAIL**  
 AE120 SCALE: 1-1/2"=1'-0"



CHECK GRAPHIC SCALES BEFORE USING