

| No. | Date | Description |
|-----|------|-------------|
| | | |
| | | |

| Revision | Schedule |
|----------|----------|
| | |
| | |

JOB NO.
17064

DRWN: CHK
K.F.M.

SCALE:
1/4"=1'-0"

ISSUE
08/04/17

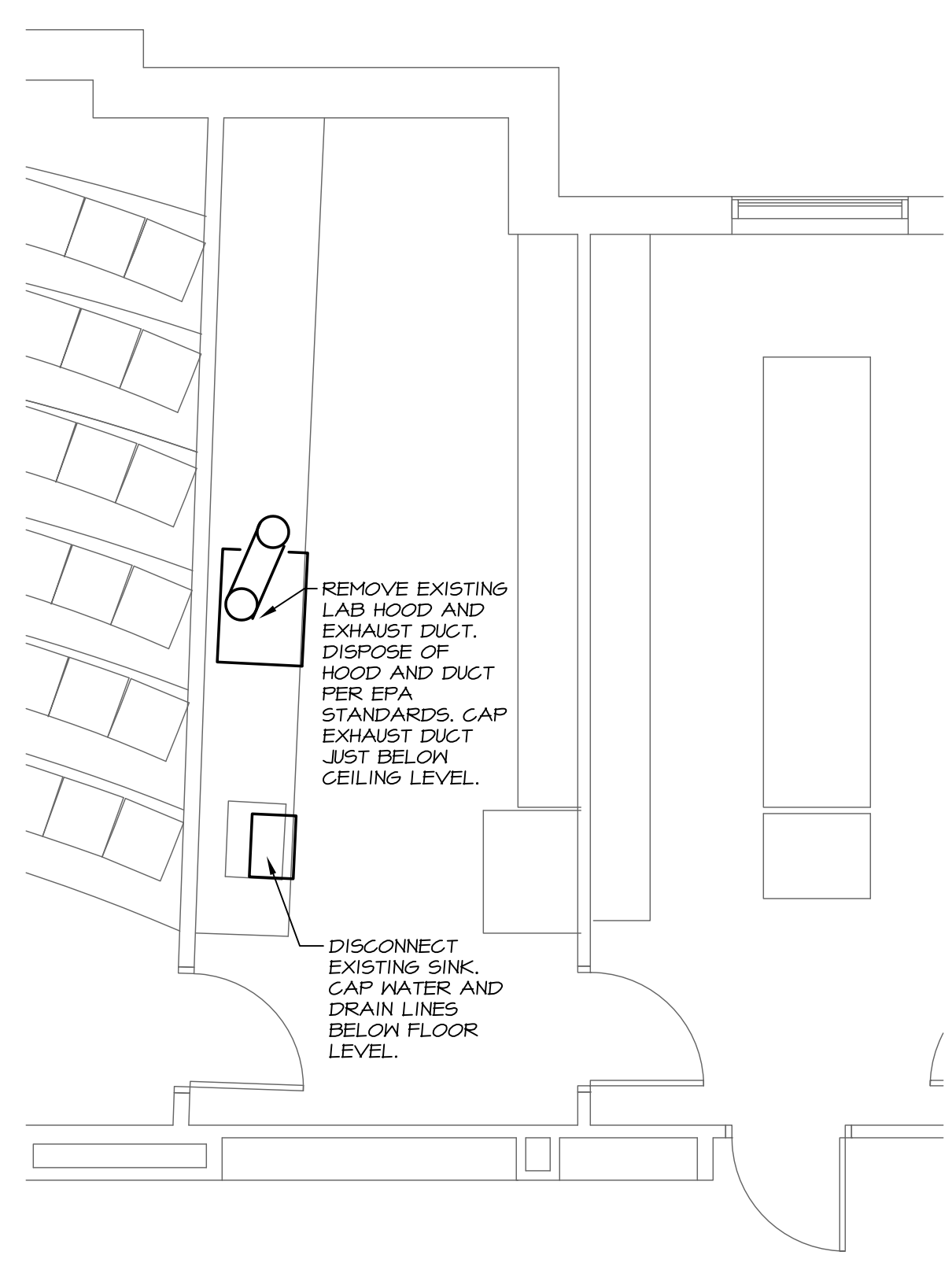
TITLE
PIPING
FIRE SPRINKLER
SHEET/METAL
ROOMS 305

SHEET

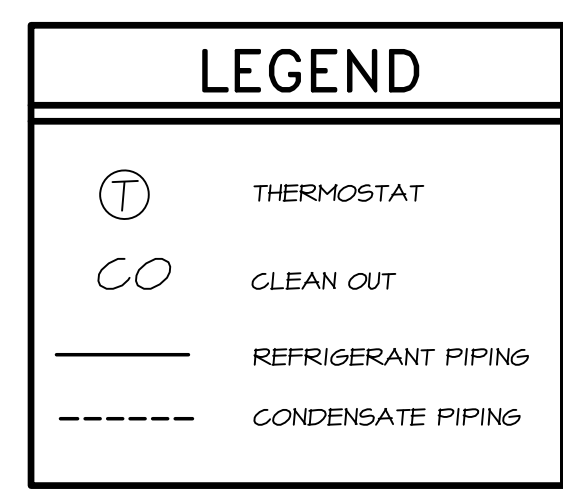
M102

| HEAT PUMP OUTDOOR UNIT SCHEDULE | | | | | | | | | | |
|---------------------------------|-----------------------------|--------------|-------------|----------|-----|-----|------|------|---------|---|
| TAG | DESIGN MANUFACTURER & MODEL | NOMINAL SIZE | REFRIGERANT | ELECTRIC | | | SEER | HSPF | WEIGHT | REMARKS |
| | | | | POWER | MCA | MOP | | | | |
| OU-3 | mitsubishi PUZ-A24NH44 | 2.0 TONS | 410A | 208/60/1 | 18 | 30 | 17.0 | 10.8 | 165 LBS | WITH FRONT, BACK AND SIDE WIND BAFFLE FOR COOLING OPERATION TO -23 DEG F AND BACnet INTEGRATION, OR EQUAL BY TRANE, SAMSUNG OR DAIKIN |

| HEAT PUMP INDOOR UNIT SCHEDULE SCHEDULE | | | | | | | | | | |
|---|-----------------------------|------|-----------------------|-----------------------|-----|-----|-----|--------|---------|------|
| TAG | DESIGN MANUFACTURER & MODEL | TYPE | COOLING CAPACITY BTUH | HEATING CAPACITY BTUH | CFM | MCA | MOP | WEIGHT | REMARKS | |
| | | | | | | | | | | IU-4 |



1 MECHANICAL DEMOLITION PLAN
SCALE: 1/4" = 1'-0"

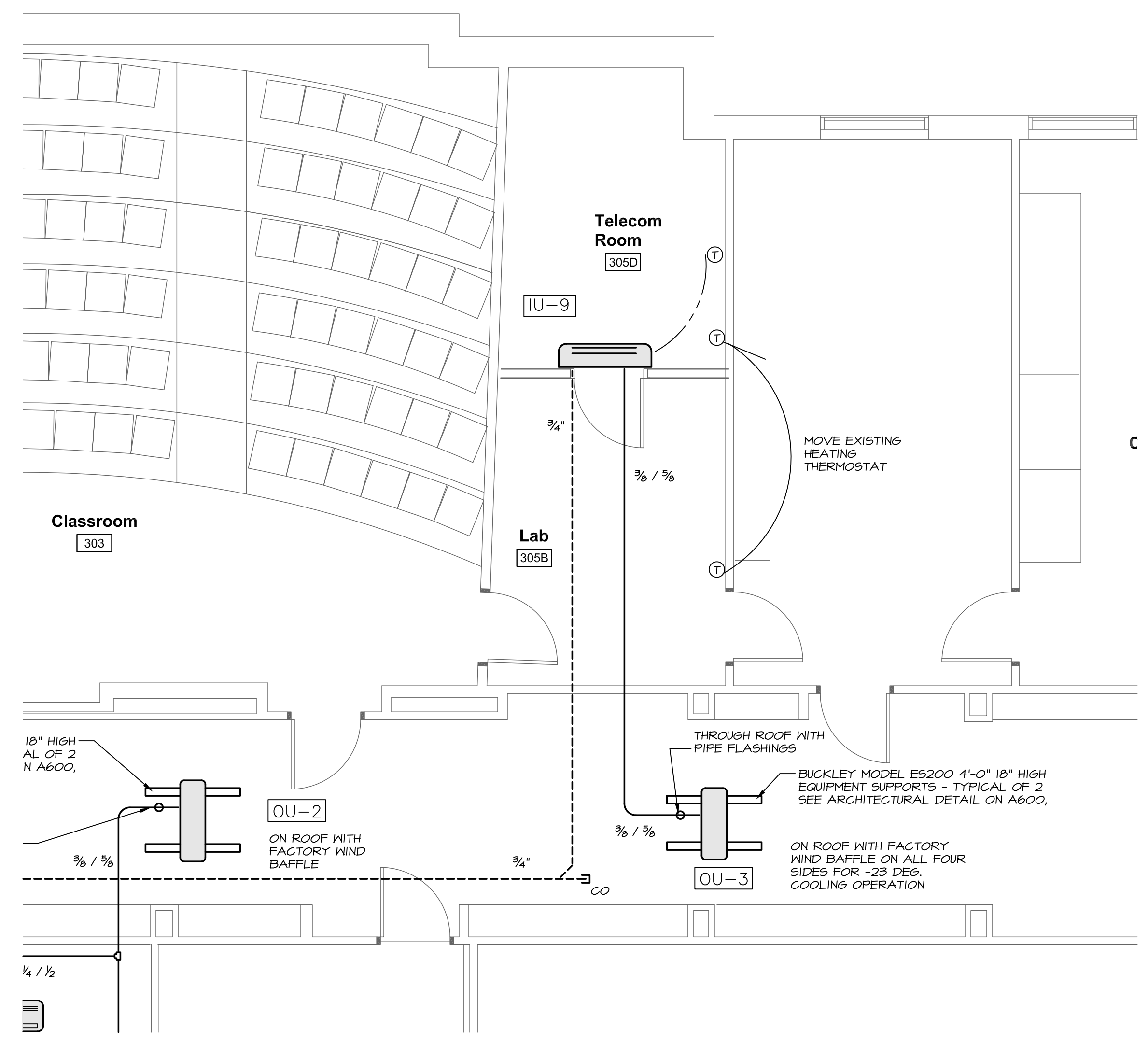


- PIPING NOTES**
- Piping is shown diagrammatically and does not indicate all the offsets, rises and drops that will be required.
 - All refrigerant piping to be Type "K" copper or ACR Tube
 - All condensate piping to be Schedule 40 PVC.
 - Insulate all refrigerant piping with 1/2" closed cell insulation (Armatflex or equal).
 - All outdoor refrigerant piping to be painted with paint approved by insulation manufacturer.

- GENERAL NOTES**
- All systems are to be to meet the following Codes and Standards.
 - 1.1. ASHRAE 90.1 2007 - Energy Standard For Commercial Buildings.
 - 1.2. ASHRAE 60.1 2007 - Standard for Indoor Air Quality in Commercial Buildings.
 - 1.3. 2009 IECC - International Energy Conservation Code.
 - 1.4. NFPA - National Fire Protection Association Standards.

- CONTROL NOTES**
- It will be the Mechanical Contractor's responsibility to provide and install all controls and all control wiring. Mechanical Contractor to subcontract ATC work to:
IB Controls (Brian Lajeunesse) brian@ibcontrols.com
3 Pope Road
Winthrop, ME 04092
207-843-0080
 - All control wiring that is run in concealed spaces to be plenum rated.
 - All control wiring that is run exposed shall be in electrical conduit provided and installed by the ATC contractor.
 - All thermostats to be provided by the Equipment Manufacturer and installed by the ATC contractor.
 - Heat Pump Manufacturer to supply BACnet gateway for integration into the campus Building Management System
 - Sequence of operation
 - 6.1. On a call for cooling enable cooling.

- FIRE SPRINKLER NOTES**
- Provide all design services, construction documents, labor, transportation, equipment, permits, materials, tools, inspections, incidentals, tests and perform all operations in connection with the modification of the existing Fire Sprinkler System in the building.
 - Comply with requirements of all Authorities Having Jurisdiction.
 - Rearrange sprinkler coverage as required for new partitions.
 - Coordinate with interfacing trades
 - Submit equipment and components for review. Prepare sprinkler drawings and Record Drawings.
 - Provide 1 year guarantees and warranties on all new work.
 - The Automatic Sprinkler System shall meet the standards of the most recent edition of the National Fire Protection Association's (NFPA) - NFPA 13 Standard for the Installation of Sprinkler Systems.
 - 6.1. ROOM 305B
 - 6.2. ROOM 305D



2 MECHANICAL PIPING PLAN
SCALE: 1/4" = 1'-0"



**REVIEW ONLY
NOT FOR
CONSTRUCTION**