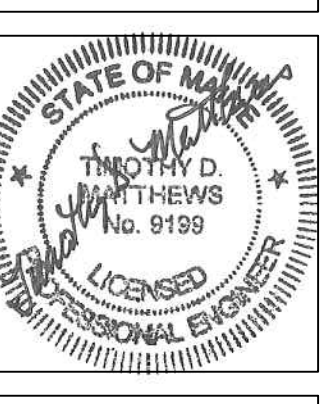


1	Date	Revision
1		1



JOB NO.  
17064

DRWN. CHK  
JMD TDM

SCALE:

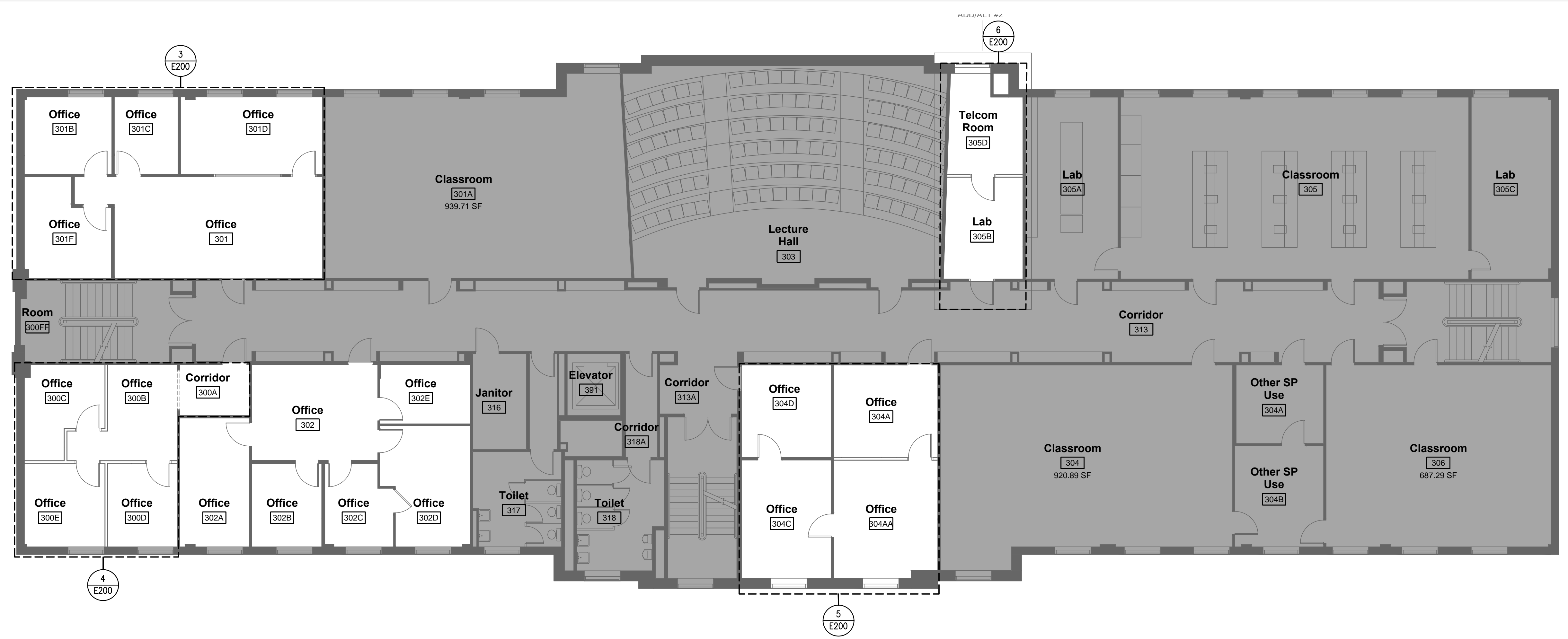
ISSUE  
FOR BIDDING  
08/7/17

TITLE  
ELECTRICAL  
LIGHTING & FIRE  
ALARM PLAN -  
LEVEL 3

SHEET

**E200**

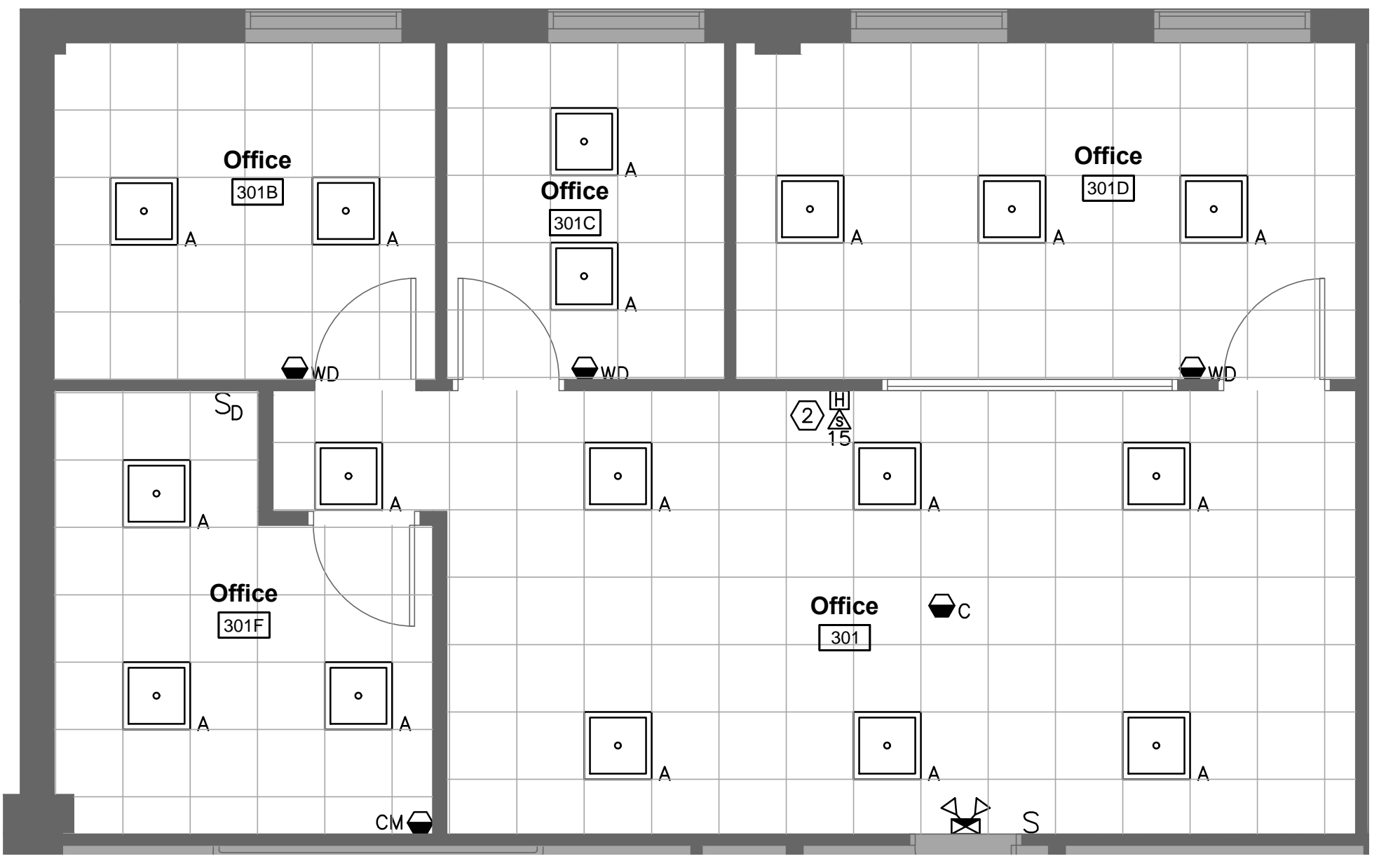
- NOTES:**
- SEE E0.0 FOR LEGEND, ABBREVIATIONS AND GENERAL NOTES.
  - RECONNECT NEW LIGHTS TO EXISTING LIGHTING CIRCUITS. FURNISH ANY ADDITIONAL WIRING REQUIRED FOR DIMMING AND NEW SWITCH LOCATIONS.
  - CONNECT COMBINATION EXIT SIGNS/EMERGENCY LIGHTS TO LOCAL LIGHTING CIRCUIT.
- KEYED NOTES:**
- FURNISH NEW HORN STROBE TO EXISTING FIRE ALARM ZONE. FURNISH ALL WIRING, BOXES, PROGRAMMING, AND AUXILIARY EQUIPMENT REQUIRED FOR A COMPLETE AND OPERABLE SYSTEM.
  - EXISTING FIRE ALARM DEVICE.
  - MAXLITE FIXTURES ARE DEDUCT/ALT #2.



**1 ELECTRICAL LIGHTING & FIRE ALARM PLAN**  
SCALE: 1/8"=1'

LIGHTING SCHEDULE					
TYPE	DESCRIPTION	MANUFACTURER	LAMPS	MOUNTING	NOTES
A	2' X 2' LED VOLUMETRIC TROFFER. 120V	COLUMBIA LIGHTING	39W LED 3500K 4398 LUMENS	CEILING GRID	MODEL #: LCAT22-35VLG-EDU
A	2' X 2' LED FLAT PANEL EDGE LIT DLC PREMIUM LISTED. 120V	MAXLITE	36W LED 3500K 4700 LUMENS	CEILING GRID	MODEL #: MLFP-22EP-35-35
C	CEILING MOUNTED DUAL TECHNOLOGY ULTRASONIC AND PASSIVE INFRARED OCCUPANCY SENSOR 120V	HUBBELL	N/A	CEILING SURFACE	MODEL #: OMNID500 FURNISH RELAYS/POWER PACKS AS REQUIRED FOR A COMPLETE AND OPERABLE INSTALLATION
CM	CORNER MOUNTED DUAL TECHNOLOGY ULTRASONIC AND PASSIVE INFRARED OCCUPANCY SENSOR 120V	HUBBELL	N/A	CORNER SURFACE	MODEL #: L0DT FURNISH RELAYS/POWER PACKS AS REQUIRED FOR A COMPLETE AND OPERABLE INSTALLATION
WD	WALL MOUNT DIMMING PASSIVE INFRARED OCCUPANCY SENSOR, WHITE COLOR. 120V	HUBBELL	N/A	WALL SURFACE	MODEL #: LHD-IRS-3-N-WH
	EMERGENCY BATTERY UNIT 120V	DUAL-LITE	2W LED	WALL SURFACE	MODEL #: EV4D-02L
	LED EXIT SIGN EMERGENCY BATTERY UNIT COMBINATION WITH REMOTE CAPACITY 120V	DUAL-LITE	(2) 1W LED	CEILING SURFACE	MODEL #: EVCU-R-W-D4
	LED EXIT SIGN EMERGENCY BATTERY UNIT 120V	DUAL-LITE	2W LED	CEILING SURFACE	MODEL #: EVEU-R-W

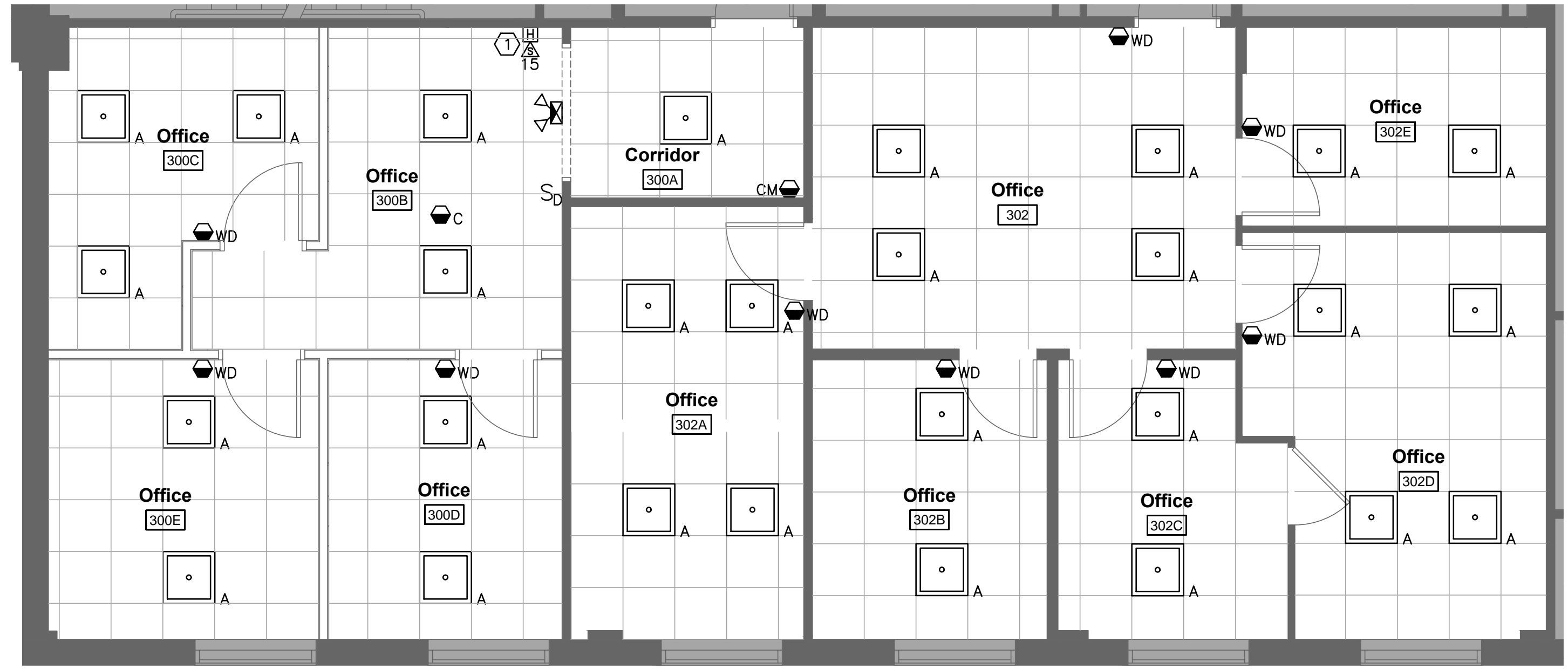
**2 LIGHTING SCHEDULE**  
SCALE: NOT TO SCALE



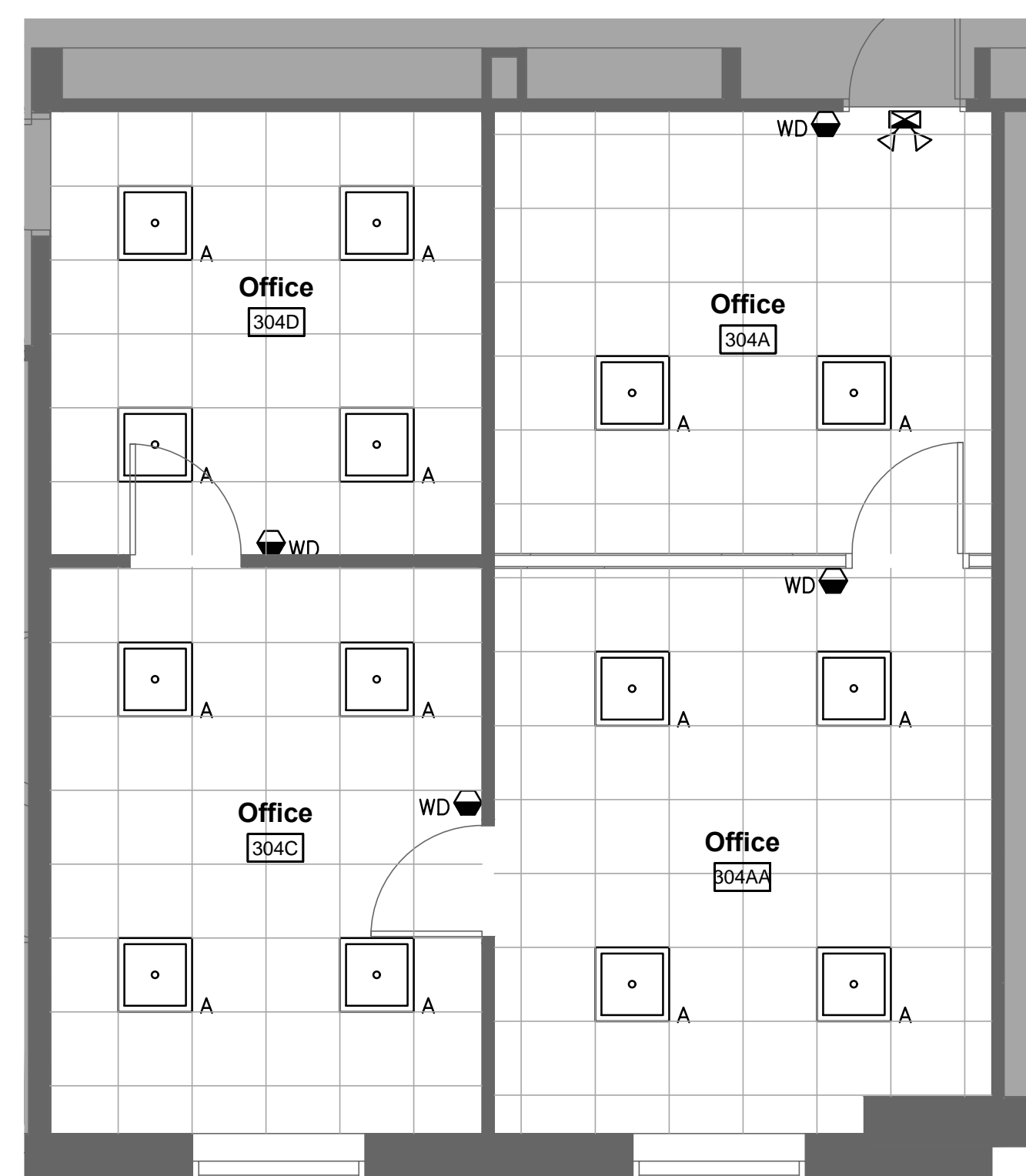
**3 LIGHTING DETAIL - 301, 301B, 301C, 301D, 301F**  
SCALE: 1/4"=1'

Room #	Room Name	FIXTURE "ON" BY	FIXTURE "OFF" BY
3rd Floor			
300A	CORRIDOR	CORNER SENSOR	CORNER SENSOR
300B	OFFICE	WALL DIMMER	SWITCH/CEILING SENSOR
300C	ROOM	WALL DIMMER	WALL DIMMER/SENSOR
300D	ROOM	WALL DIMMER	WALL DIMMER/SENSOR
300E	ROOM	WALL DIMMER	WALL DIMMER/SENSOR
301	OFFICE	SWITCH	SWITCH/CEILING SENSOR
301B	OFFICE	WALL DIMMER	WALL DIMMER/SENSOR
301C	OFFICE	WALL DIMMER	WALL DIMMER/SENSOR
301D	OFFICE	WALL DIMMER	WALL DIMMER/SENSOR
301F	OFFICE	WALL DIMMER	SWITCH/CORNER SENSOR
302	OFFICE	WALL DIMMER	WALL DIMMER/SENSOR
302A	OFFICE	WALL DIMMER	WALL DIMMER/SENSOR
302B	OFFICE	WALL DIMMER	WALL DIMMER/SENSOR
302C	OFFICE	WALL DIMMER	WALL DIMMER/SENSOR
302D	OFFICE	WALL DIMMER	WALL DIMMER/SENSOR
302E	OFFICE	WALL DIMMER	WALL DIMMER/SENSOR
304C	OFFICE	WALL DIMMER	WALL DIMMER/SENSOR
304D	OFFICE	WALL DIMMER	WALL DIMMER/SENSOR
304E	CONFERENCE	WALL DIMMER	SWITCH/CEILING SENSOR
305B	LAB	WALL DIMMER	WALL DIMMER/SENSOR
305D	TELECOM ROOM	WALL DIMMER	WALL DIMMER/SENSOR

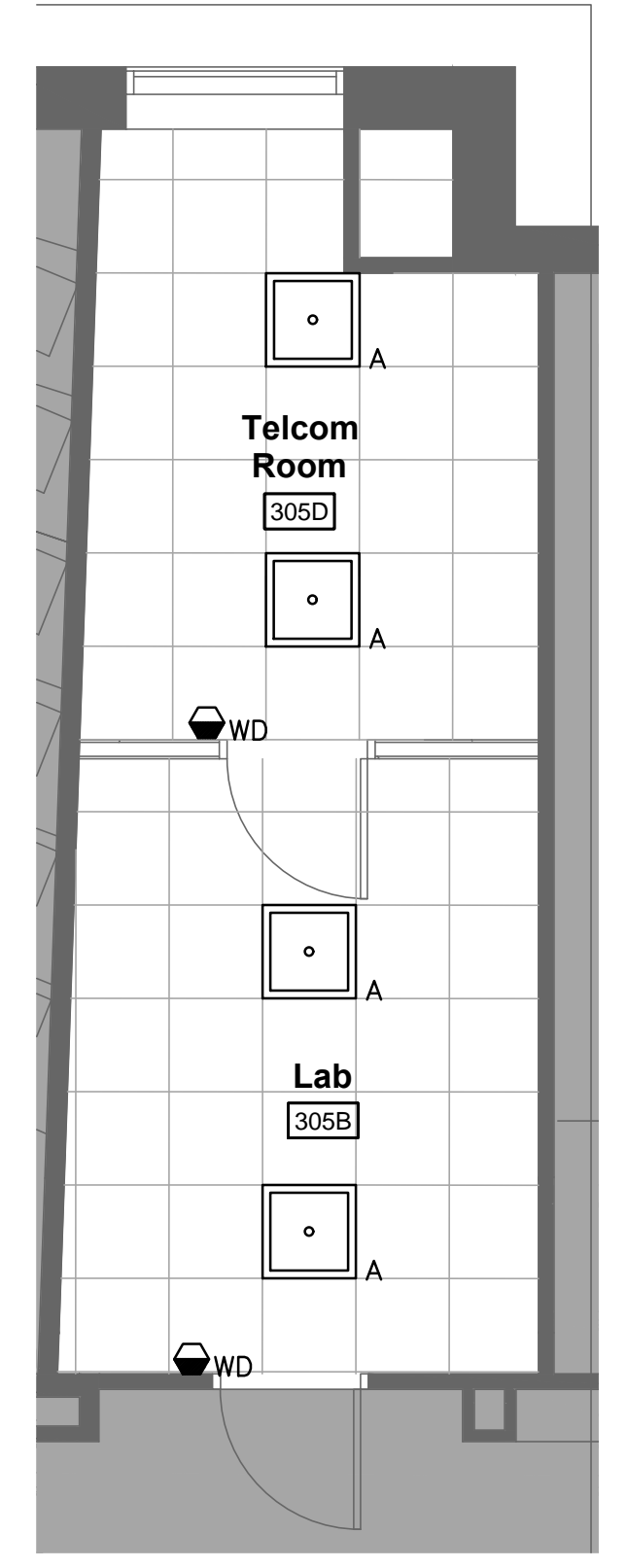
**7 LIGHTING CONTROL SCHEDULE**  
SCALE: NOT TO SCALE



**4 LIGHTING DETAIL - OFFICE SUITES 300 & 302**  
SCALE: 1/4"=1'



**5 LIGHTING DETAIL - 304C, 304D, 304E**  
SCALE: 1/4"=1'



**6 ADD ALT #2 - ELECTRICAL DETAIL - 305B, 305D**  
SCALE: 1/4"=1'