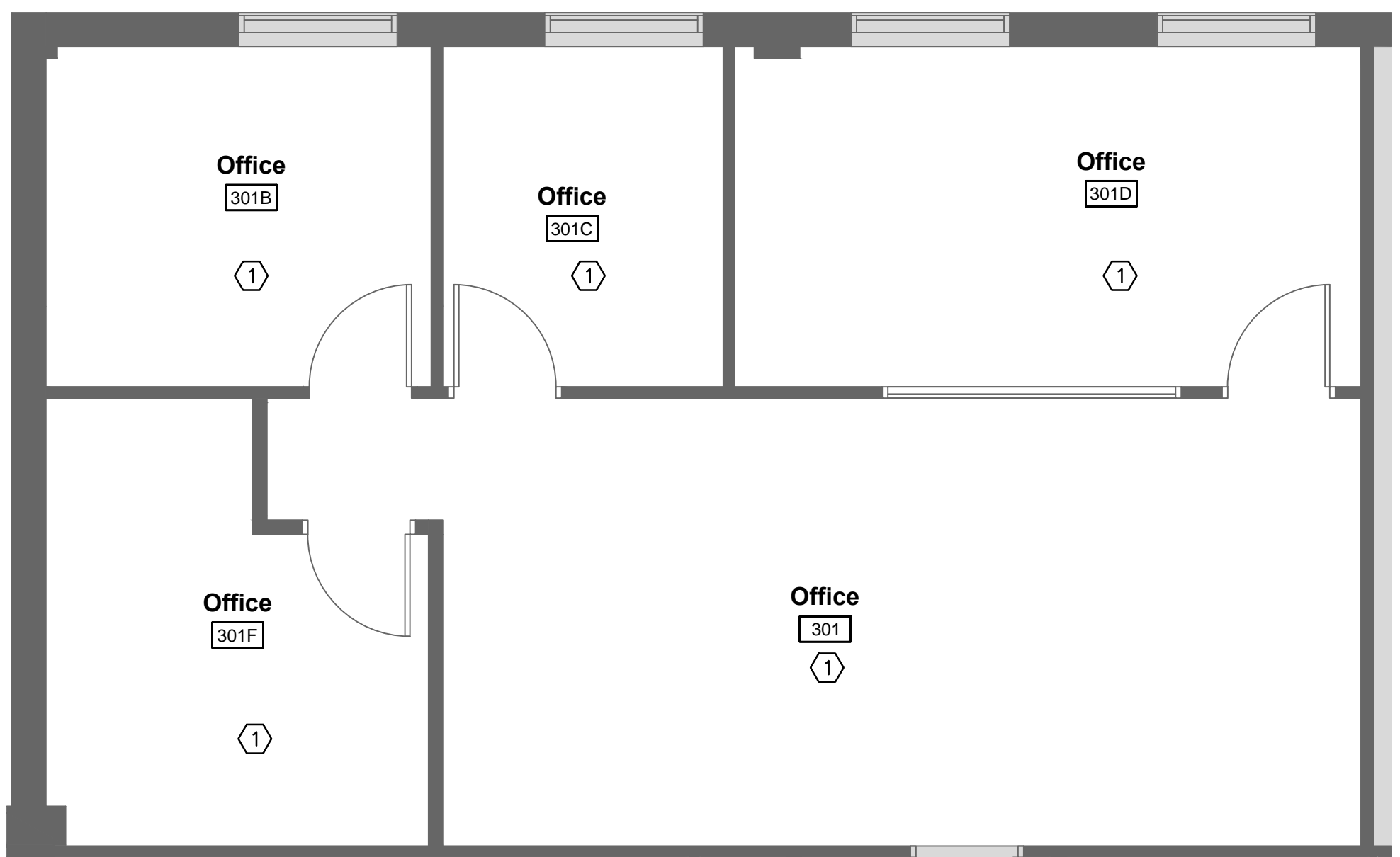
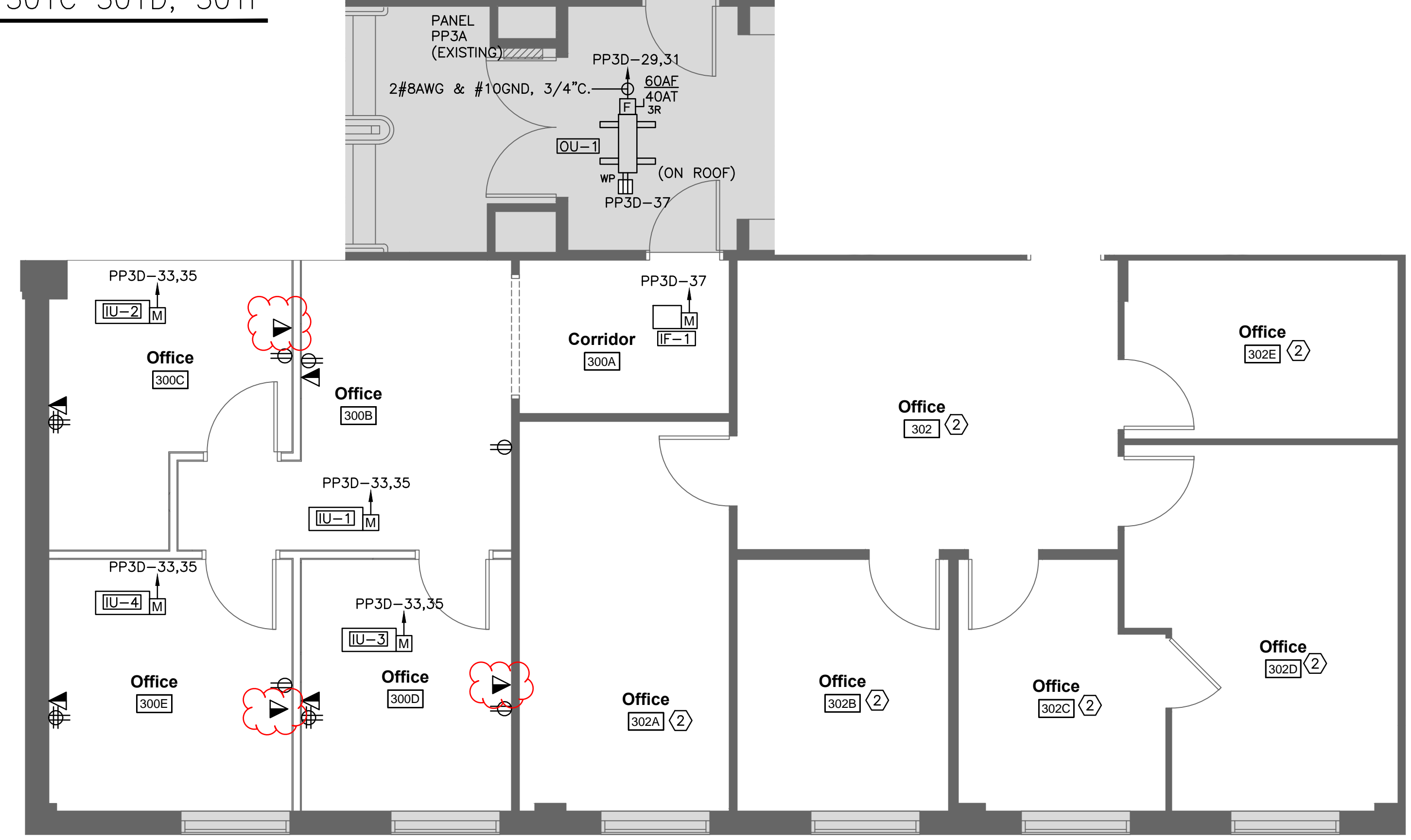


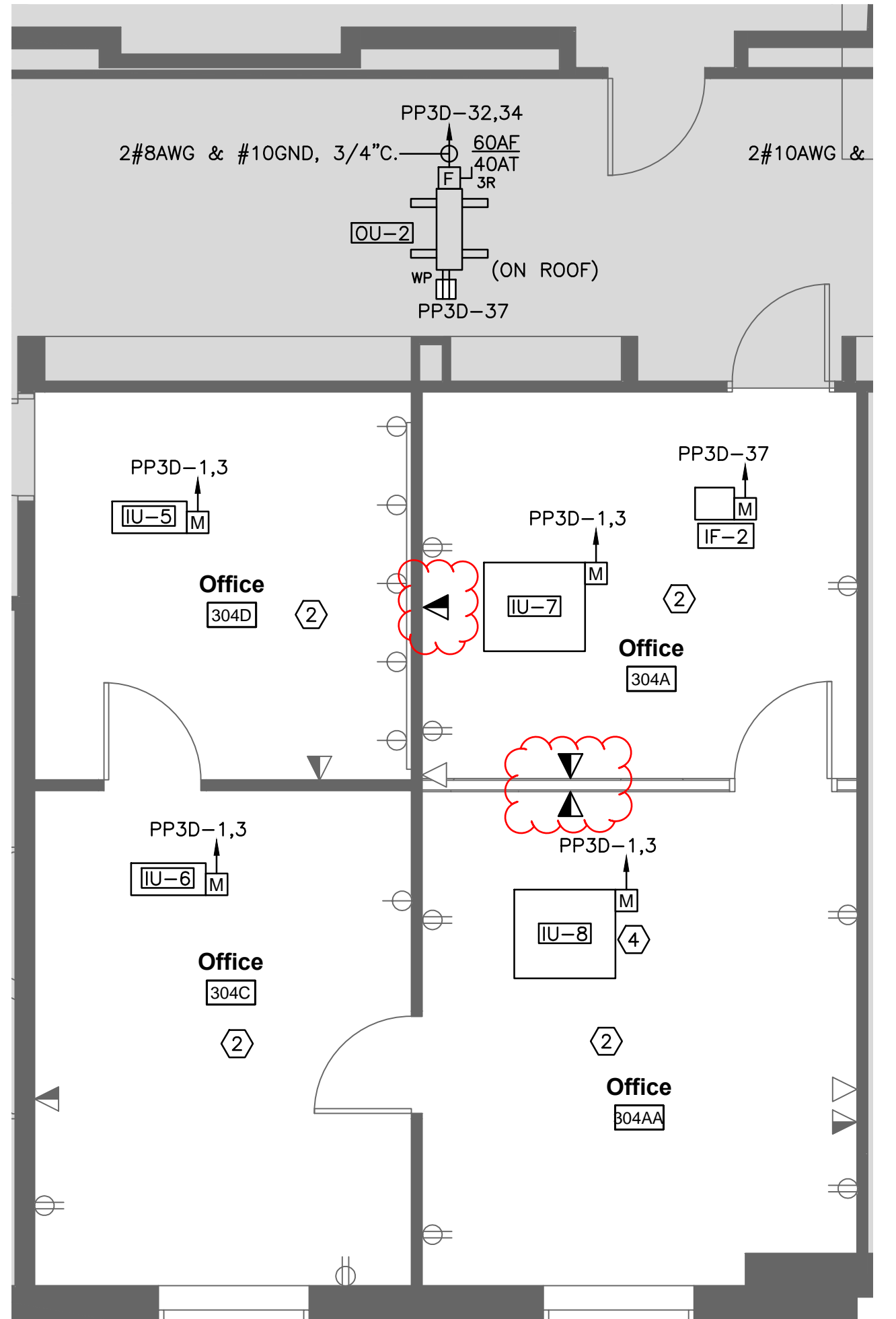
1 ELECTRICAL POWER & SYSTEMS PLAN
SCALE: 1/8"=1'



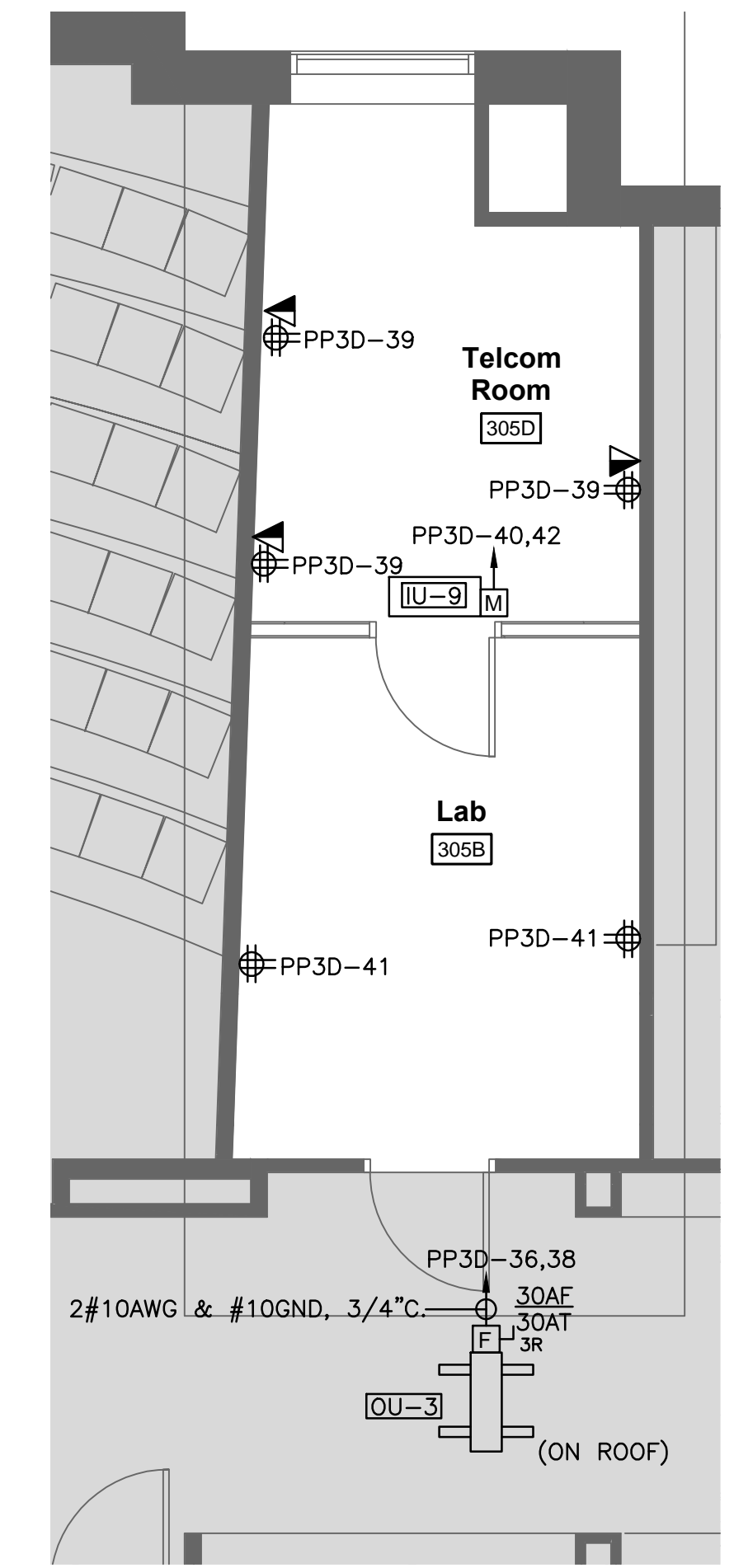
3 ELECTRICAL DETAIL - 301, 301B, 301C, 301D, 301F
SCALE: 1/4"=1'



4 ELECTRICAL DETAIL - OFFICE SUITES 300 & 302
SCALE: 1/4"=1'



5 ELECTRICAL DETAIL - 304C, 304D, 304E
SCALE: 1/4"=1'



6 ADD ALT #1 - ELECTRICAL DETAIL - 305B, 305D
SCALE: 1/4"=1'

DIRECTORY	KVA LOAD			CCT #	BKR AMPS	PHASE	BKR AMPS	CCT #	KVA LOAD			DIRECTORY		
	A	B	C						A	B	C			
ROOM 305 IU-5,6,7	0.1			1	20	A	20	4	*	*	*	ITV 304		
AC ROOM UNIT 304E			*	5	15	C	20	6			*	SPARE		
RECEPTS ROOM 302	*			7	20	A	20	8	*			RTU #1		
RECEPTS RM 302		*		9	20	B	20	10		*				
ROOFTOP UNIT #1 RECEPTS			*	11	20	C	30	12		*		RTU RM 304		
RM 302 RECEPTS	*			13	20	A	20	14	*					
RM 301A RECEPTS		*		15	20	B	20	16	*			RTU-304 BLOWER		
RM 302 D-C RECEPTS		*	*	17	20	C	20	18		*		RTU-305 HOOD		
WOMENS RM DOOR OPENER	*			19	20	A	20	20	*			HVAC #4 RECEPT		
HVAC RTU #2		*		21		B		22	*					
		*	*	23	25	C	25	24		*		HVAC RTU #3		
		*		25		A		26	*					
CONTROLLER HV3 HV4		*		27	20	B	30	28	*			HVAC RTU #4		
RM 300 OU-1	3.2			31	40	A	40	32	3.2			ROOM 305 OU-2		
RM 300 IU-1,2,3,4		0.1		33	15	B	30	34		3.2				
IF-1			0.1	35		C	30	36	*			RM 305 OU-3		
TELECOM ROOM QUAD RECEPTS		1.2		39	20	B	40	40	*			ROOM 305 IU-9		
LAB QUAD RECEPTS			0.8	41	20	C	15	42	*					
SUBTOTAL	###	###	###						###	###	###	SUBTOTAL		
VOLTAGE: 208Y/120V			PHASE: 3			POLES: 4			TOTAL KVA A-PHASE			###	PANEL	PP30
MAIN LUGS ONLY			BUS AMPS: 225A			TOTAL KVA B-PHASE			###			LOCATION	CENTER STAIRWELL	
MOUNTING: SURFACE			TOTAL KVA C-PHASE			###			TOTAL KVA			###		
SHORT CIRCUIT RATING: 10KAIC			TOTAL KVA			###								
NOTES:														

2 ELECTRICAL PANEL SCHEDULES
SCALE: NOT TO SCALE

- NOTES:
- SEE E0.0 FOR LEGEND, ABBREVIATIONS AND GENERAL NOTES.
- KEYED NOTES:
- RETAIN DEVICES IN THIS AREA. REPLACE RECEPTACLES AND COVERPLATES IN PLACE. CONFIRM EQUIPMENT IN FIELD.
 - DEVICES AS SHOWN IN THIS AREA SHALL REMAIN AS SHOWN. REPLACE RECEPTACLES AND COVERPLATES, IN PLACE.
 - IT IS ASSUMED THAT EXISTING CLASSROOM RECEPTACLES AND THE OVERHEAD PROJECTOR ARE FED FROM PANEL PP3A IN STAIRWELL. CONFIRM CIRCUITS IN FIELD. REFEED NEW RECEPTACLES FROM EXISTING CIRCUITS.
 - REMOVE EXISTING ROOM UNIT AND WIRING. INSTALL NEW TO CIRCUIT SHOWN.
 - REUSE EXISTING BREAKER (PREVIOUSLY FEEDING AC ROOFTOP UNIT).
 - REMOVE EXISTING ROOFTOP UNIT WIRING.
 - FURNISH NEW GE TYPE THOB BREAKERS.

PDT ARCHITECTS
49 DARTMOUTH STREET
PORTLAND, MAINE 04101
207-775-1059
www.pdtarchts.com

COPYRIGHT
PDT Architects
Re-use or reproduction of the contents of this document is not permitted without written permission of PDT Architects.

Payson Smith 3rd Floor Renovations
Falmouth St, Portland ME

1	Date	Revision 1
No.	Date	Description
Revision Schedule		

JOB NO. 17064
DRWN. CHK JMD TDM
SCALE:
ISSUE FOR BIDDING 08/7/17
TITLE ELECTRICAL POWER & SYSTEMS PLAN - LEVEL 3
SHEET **E100**