

Door & Frame Schedule																			
LOCATION			DOOR										FRAME						
MARK	ROOM NO.	ROOM NAME	OPERATION	OPENING				PANEL						RATING		HDWR		COMMENTS	
				WIDTH	HEIGHT	R.O. WID	R.O. HGT	TYPE	MATL	THICK	CONFIG	PANEL WIDTH	TYPE	MATL					
300	300A	Corridor	Single - Hinged	3'-0"	7'-0"	3'-4"	7'-2"	G	WD/GLASS	1 3/4"	SINGLE	3'-0"	1	HM					
300.1	300B	Office	Door Opening/No Panel	5'-0"	7'-0"	5'-4"	7'-2"			0"	SINGLE	5'-0"	2	HM					
300.2	300C	Office	Single - Hinged	3'-0"	7'-0"	3'-4"	7'-2"	N	WD/GLASS	1 3/4"	SINGLE	3'-0"	1	HM					
300.3	300E	Office	Single - Hinged	3'-0"	7'-0"	3'-4"	7'-2"	N	WD/GLASS	1 3/4"	SINGLE	3'-0"	1	HM					
300.4	300D	Office	Single - Hinged	3'-0"	7'-0"	3'-4"	7'-2"	N	WD/GLASS	1 3/4"	SINGLE	3'-0"	1	HM					
301	301	Office	Single - Hinged	3'-0"	7'-0"	3'-4"	7'-2"	G	WD/GLASS	1 3/4"	SINGLE	3'-0"	1	HM					
301.1	301D	Office	Single - Hinged	3'-0"	7'-0"	3'-4"	7'-2"	N	WD/GLASS	1 3/4"	SINGLE	3'-0"	1	HM					
301.2	301C	Office	Single - Hinged	3'-0"	7'-0"	3'-4"	7'-2"	N	WD/GLASS	1 3/4"	SINGLE	3'-0"	1	HM					
301.3	301B	Office	Single - Hinged	3'-0"	7'-0"	3'-4"	7'-2"	N	WD/GLASS	1 3/4"	SINGLE	3'-0"	1	HM					
301.4	301F	Office	Single - Hinged	3'-0"	7'-0"	3'-4"	7'-2"	N	WD/GLASS	1 3/4"	SINGLE	3'-0"	1	HM					
302	313A	Corridor	Single - Hinged	3'-0"	7'-0"	3'-4"	7'-2"	G	WD/GLASS	1 3/4"	SINGLE	3'-0"	1	HM					
302.1	302	Office	Single - Hinged	3'-0"	7'-0"	3'-4"	7'-2"	F	WD	1 3/4"	SINGLE	3'-0"	1	HM					EXISTING TO REMAIN
302.2	302	Office	Single - Hinged	3'-0"	7'-0"	3'-4"	7'-2"	F	WD	1 3/4"	SINGLE	3'-0"	1	HM					EXISTING TO REMAIN
302.3	302C	Office	Single - Hinged	3'-0"	7'-0"	3'-4"	7'-2"	F	WD	1 3/4"	SINGLE	3'-0"	1	HM					EXISTING TO REMAIN
302.5	302D	Office	Single - Hinged	3'-0"	7'-0"	3'-4"	7'-2"	L	MTU/GLASS	1 3/4"	SINGLE	3'-0"	1	HM					EXISTING TO REMAIN
302.6	302E	Office	Single - Hinged	3'-0"	7'-0"	3'-4"	7'-2"	L	MTU/GLASS	1 3/4"	SINGLE	3'-0"	1	HM					EXISTING TO REMAIN
304	313A	Corridor	Single - Hinged	3'-0"	7'-0"	3'-4"	7'-2"	G	WD/GLASS	1 3/4"	SINGLE	3'-0"	1	HM					
304.1	313A	Corridor	Single - Hinged	3'-0"	7'-0"	3'-4"	7'-2"	G	WD/GLASS	1 3/4"	SINGLE	3'-0"	1	HM					
304.2	304D	Office	Single - Hinged	3'-0"	7'-0"	3'-4"	7'-2"	F	WD/GLASS	1 3/4"	SINGLE	3'-0"	1	HM					
304.3	304AA	Office	Single - Hinged	3'-0"	7'-0"	3'-4"	7'-2"	F	WD/GLASS	1 3/4"	SINGLE	3'-0"	1	HM					
304.4	304A	Office	Single - Hinged	3'-0"	7'-0"	3'-4"	7'-2"	N	WD/GLASS	1 3/4"	SINGLE	3'-0"	1	HM					
305	313A	Corridor	Single - Hinged	3'-0"	7'-0"	3'-4"	7'-2"	G	WD/GLASS	1 3/4"	SINGLE	3'-0"	1	HM					ADD/ALT #1
305.1	305B	Vestibule	Single - Hinged	3'-0"	7'-0"	3'-4"	7'-2"	F	WD	1 3/4"	SINGLE	3'-0"	1	HM					ADD/ALT #1

GENERAL DOOR AND WINDOW NOTES

- FILL ALL INTERIOR HOLLOW METAL FRAMES ADJACENT TO MASONRY WITH MORTAR.
- PACK MINERAL-FIBER INSULATION IN ALL INTERIOR HOLLOW METAL FRAMES IN STUD WALLS.
- REFER TO SPECIFICATIONS FOR LOCATIONS OF TEMPERED, LAMINATED, WIRED, AND INSULATING GLASS.
- AT DOOR, WINDOW AND LOUVER OPENINGS IN EXTERIOR WALLS WITH MASONRY VENEER PROVIDE METAL PAN FLASHING AT HEADS UNLESS NOTED OTHERWISE.
- DOOR SWING WILL STRIKE THE WALL.

DOOR NOTES

- A. SPECIAL WARRANTY: MANUFACTURER AGREES TO REPAIR OR REPLACE DOORS THAT FAIL IN MATERIALS OR WORKMANSHIP WITHIN SPECIFIED WARRANTY PERIOD.
- FAILURES INCLUDE, BUT ARE NOT LIMITED TO, THE FOLLOWING:
 - WARPING (BOW, CUP, OR TWIST) MORE THAN 1/4 INCH IN A 42-BY-84-INCH SECTION.
 - TELEGRAPHING OF CORE CONSTRUCTION IN FACE VENEERS EXCEEDING 0.01 INCH IN A 3-INCH SPAN.
 - WARRANTY SHALL ALSO INCLUDE INSTALLATION AND FINISHING THAT MAY BE REQUIRED DUE TO REPAIR OR REPLACEMENT OF DEFECTIVE DOORS.
 - WARRANTY PERIOD FOR SOLID-CORE INTERIOR DOORS: LIFE OF INSTALLATION.
- B. SOURCE LIMITATIONS: OBTAIN FLUSH WOOD DOORS FROM SINGLE MANUFACTURER.

QUALITY STANDARD: IN ADDITION TO REQUIREMENTS SPECIFIED, COMPLY WITH WDMA I.S. 1-A, "ARCHITECTURAL WOOD FLUSH DOORS."

VEENER-FACED DOORS FOR TRANSPARENT FINISH

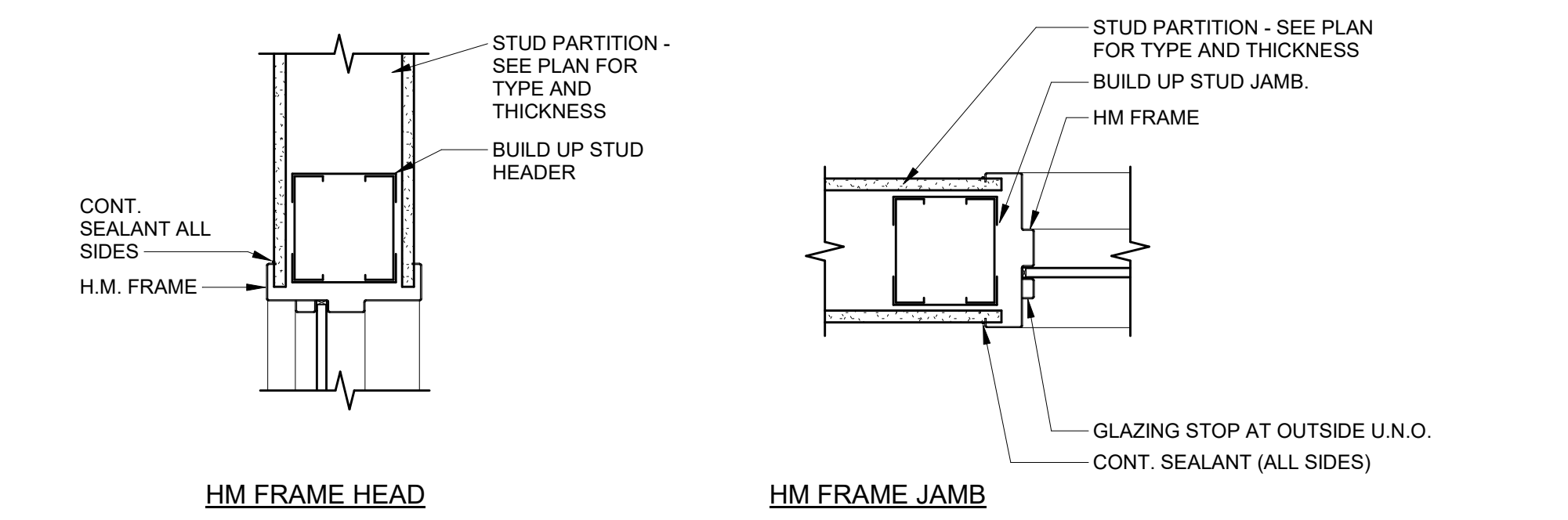
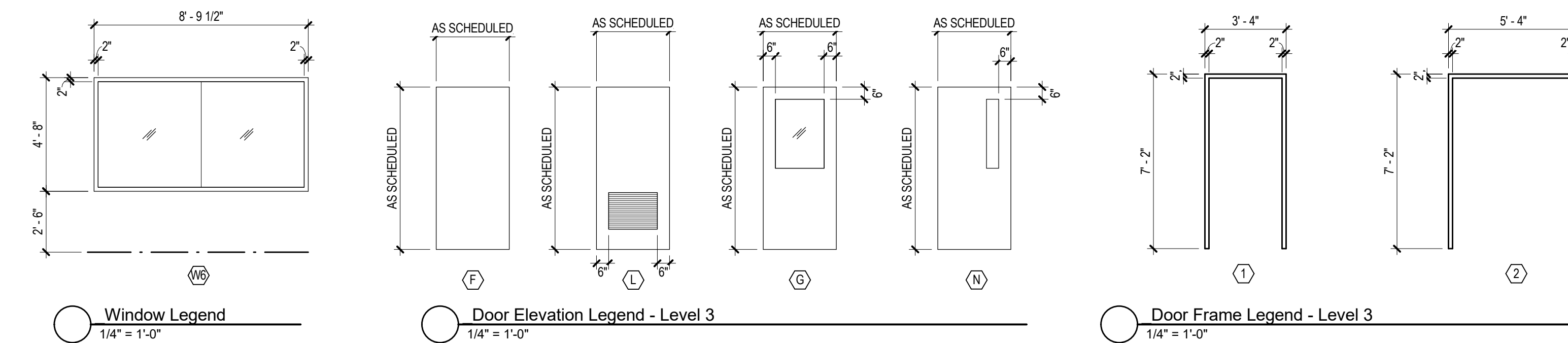
- A. INTERIOR SOLID-CORE DOORS:
- GRADE: PREMIUM, WITH GRADE A FACES.
 - SPECIES: MATCH EXISTING.
 - CUT: MATCH EXISTING.
 - MATCH BETWEEN VENEER LEAVES: MATCH EXISTING.
 - ASSEMBLY OF VENEER LEAVES ON DOOR FACES: MATCH EXISTING.
 - PAIR AND SET MATCH: PROVIDE FOR DOORS HUNG IN SAME OPENING OR SEPARATED ONLY BY MULLIONS.
 - EXPOSED VERTICAL EDGES: SAME SPECIES AS FACES - EDGE TYPE A.
 - CORE: PARTICLEBOARD EXCEPT WHERE STRUCTURAL COMPOSITE LUMBER IS REQUIRED.
 - CONSTRUCTION: FIVE PILES; STILES AND RAILS ARE BONDED TO CORE, THEN ENTIRE UNIT IS ABRASIVE PLANED BEFORE VENEERING.

DOOR HARDWARE

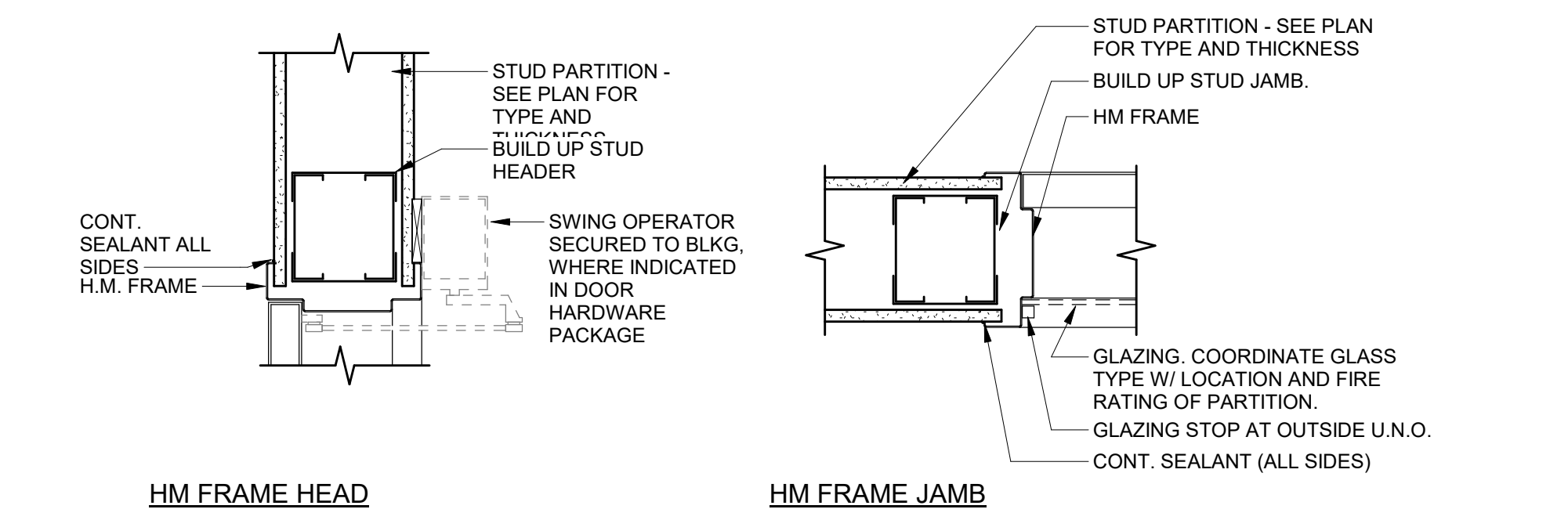
- SCHLAGE AL SERIES LOCK SET WITH SAT LEVERS OFFICE FUNCTION IN 626 FINISH. CORE AND KEYING TO BE PERFORMED BY OWNER. INCLUDE 3 HEAVY-WEIGHT HINGES WITH NONREMOVABLE PINS IN 626 FINISH, WALL STOP IVES - 407 1/2 OR FLOOR STOP IVES - 436, 438 AND SILENCERS - BHMA A156.16, GRADE 1; NEOPRENE OR RUBBER, MINIMUM DIAMETER 1/2 INCH; FABRICATED FOR DRILLED-IN APPLICATION TO FRAME.

EXISTING DOORS - REPLACE LOCK SET ONLY. HINGES, SILENCERS, AND STOPS TO REMAIN.

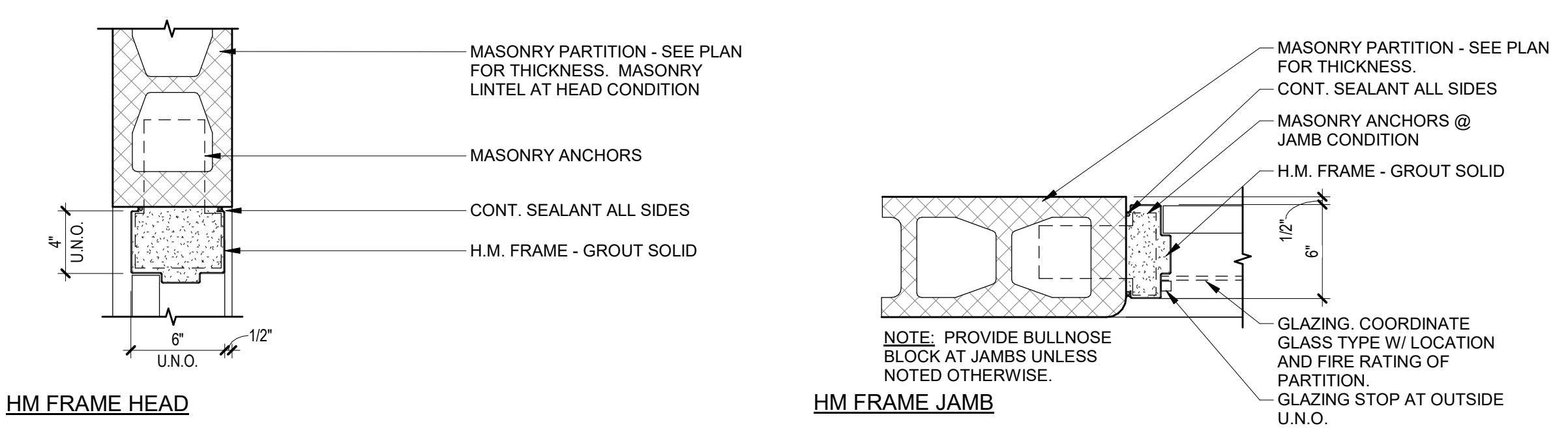
Window Schedule						
Type Mark	Family	Type	Width	Height	Comments	Count
W-6	Hollow Metal Borrowed Lite Window	8'-9 1/2" x 4'-8"	8' - 9 1/2"	4' - 8"	2 panes, sealed butt glazed joint	1



3 HM WINDOW FRAME DETAILS @ GWB
1 1/2" = 1'-0"

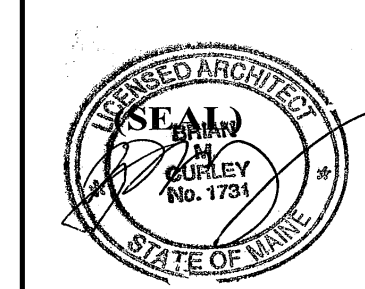


1 HM DOOR FRAME DETAILS @ GWB
1 1/2" = 1'-0"



6 HM FRAME DETAIL @ CMU
1 1/2" = 1'-0"

No.	Date	Description
		Revision Schedule



JOB NO.
17064

DRWN. CHK
Checker

SCALE:

ISSUE
05/23/14

TITLE
Door & Window
Schedules

SHEET

A210