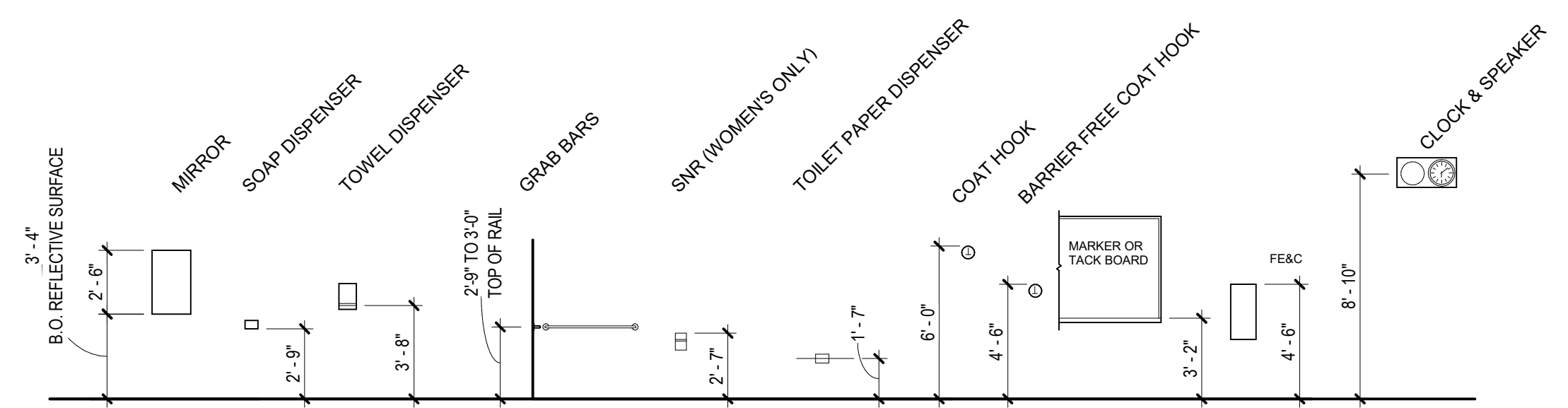


Egress-Travel Path Schedule	
Travel Path ID	Travel Distance
	0'
Travel Path #1	56' - 3 19/32"
Travel Path #2	44' - 11 5/8"
Travel Path #3	72' - 11 17/32"

GRAPHIC LEGEND

- O.L. 120
O.C. 345 OCCUPANT LOAD
 OCCUPANT CAPACITY
- EXIT
- - - - - -> PATH OF EGRESS
- AREA NOT IN CONTRACT

1 Life Safety Plan
1/8" = 1'-0"



- MOUNTING HEIGHT GENERAL NOTES:**
- SEE MECHANICAL, ELECTRICAL, AND TECHNOLOGY DRAWINGS FOR SPECIFIC FIXTURE OR DEVICE LOCATION AND DESIGNATION AND ADDITIONAL MOUNTING REQUIREMENTS.
 - COORDINATE LOCATION OF ALL RECEPTACLES, FIXTURES OR DEVICES WITH INTERIOR ELEVATIONS AND CASEWORK LOCATIONS.
 - REFER TO MANUFACTURER'S INSTRUCTIONS FOR SPECIFIC ADA REQUIRED MOUNTING HEIGHTS AS APPLICABLE.

Summary

The building consists of an existing single occupant 3 story steel frame and mass masonry structure served by 3 stairs and an elevator.

The project consists of the renovation of 3,425 sf of 3rd floor business use space to reconfigure rooms.

IBC 2009

OCCUPANCY CLASSIFICATION GROUPS:
Business Group B per 304.1

CONSTRUCTION TYPE:
Type IIA

FIRE PROTECTION SYSTEMS:
Existing Sprinkler System.

OCCUPANT LOAD:

Occupant Load of B Occupancy:
Level 3 - 11,973 GSF/100 = 120 Occupants
Area A: 908 GSF/100 = 9 Occupants
Area B: 527 GSF/100 = 5 Occupants
Area C: 705 GSF/100 = 7 Occupants

MEANS OF EGRESS:

Egress width: Corridors/doors @ 0.2'/person (min. 44" in Business occupancy)

Door width: Min. clear 32" Max leaf 48"
Common path of travel: Business IBC 1014.3 - Shall not exceed 100'

Number of exits: Two exits or exit access from any space with greater than 50 person occupancy or where common path of travel distance is exceeded.

Distance to an exit: Business 300 ft (sprinklered)
Dead end: Business 20 ft

NFPA 101 2009

Partial renovation of an existing building with B Occupancy.

OCCUPANCY CLASSIFICATION GROUPS:
Business per 3.3.178.3

CONSTRUCTION TYPE:
Existing Construction - Type II (111)

FIRE PROTECTION SYSTEMS:
Existing Sprinkler System.

OCCUPANT LOAD:

Level 3 - 11,973 GSF/100 = 120 Occupants
Area A: 908 GSF/100 = 9 Occupants
Area B: 527 GSF/100 = 5 Occupants
Area C: 705 GSF/100 = 7 Occupants

NFPA CHAPTERS

Chapter 39 Existing Business Occupancy

MEANS OF EGRESS:

7.3.2.1(1) Exits - Existing to remain
7.2.1.6.2 Access - controlled egress doors - Doors shall be arranged to unlock in the direction of travel.

EXTINGUISHMENT REQUIREMENTS:

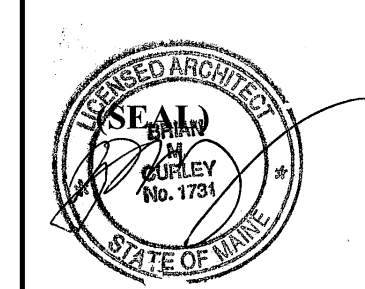
9.7.4.1 Manual extinguishing equipment -Class A Hazard - Light/low hazard
Occupancy - Table 6.2.1.1 Distance to fire extinguisher: 75ft

TRAVEL DISTANCE

39.2.5.2 Dead End Corridors - Limited to 50 ft.
39.2.5.3.1 Common path of travel - Limited to 100'
39.2.6.2 Travel distance - Limited to 300 ft. (sprinklered)

Payson Smith Hall - 3rd Floor Renovations
96 Falmouth St, Portland ME 04103

No.	Date	Description
		Revision Schedule



JOB NO.
17064

DRWN. CHK
Checker

SCALE:

ISSUE
06/08/17

TITLE
Life Safety Plans &
Typical Mounting
Heights

SHEET

A002