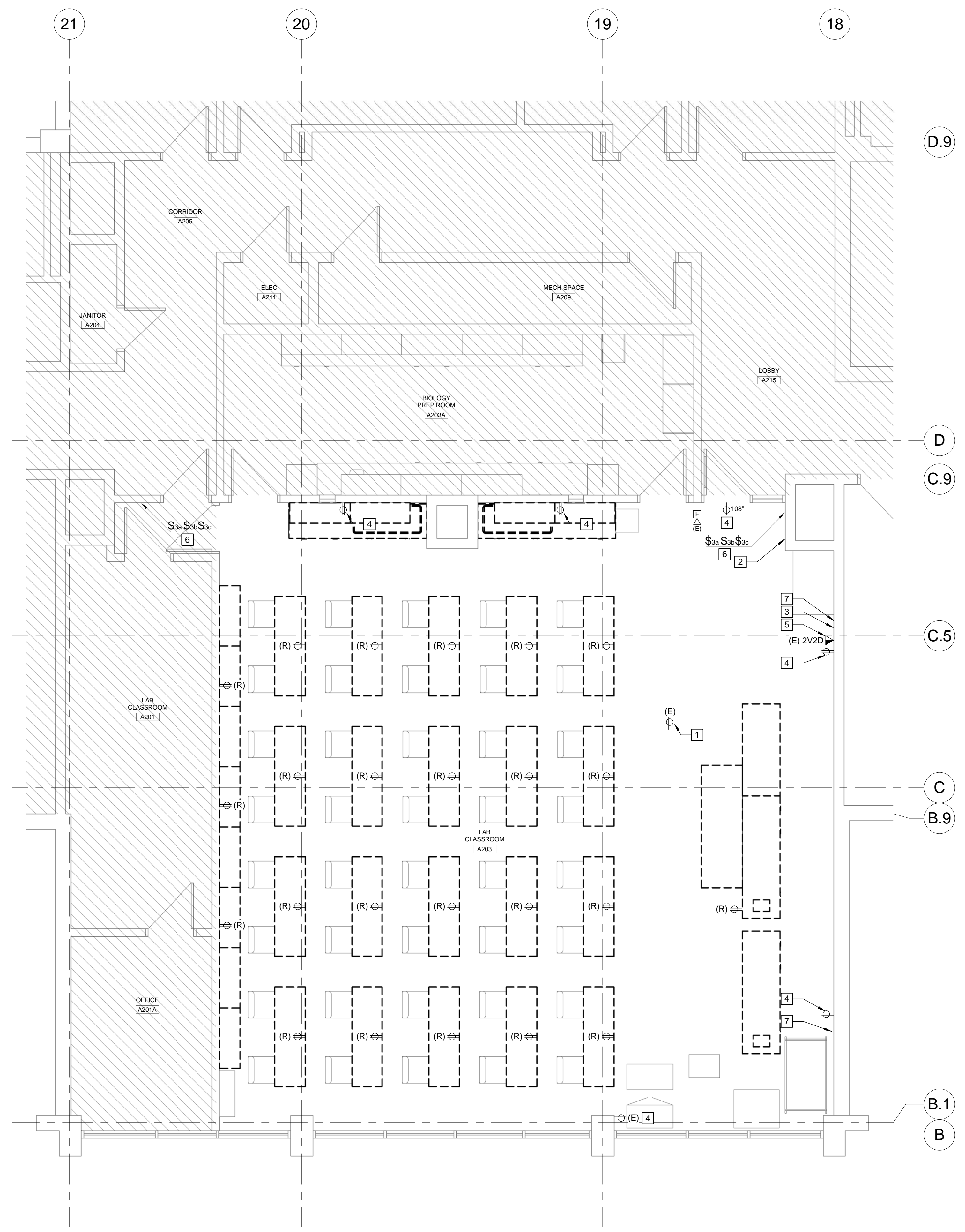
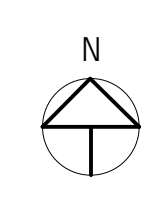


University of Southern Maine

**Science Building  
Lab A203 Renovation**

70 Falmouth Street  
Portland, ME 04104

NO.	DESCRIPTION	DATE
ISSUED FOR PERMIT		03/17/2016



- 1 ABOVE CEILING RECEPTACLE AND VIDEO CONNECTIONS TO PROJECTOR ARE EXISTING TO REMAIN.
- 2 PROJECTOR CONTROL IS EXISTING TO REMAIN.
- 3 REMOVE EXISTING SURFACE NONMETALLIC RACEWAY AND RELOCATE TECHNOLOGY OUTLET WITH (2) VOICE AND (2) DATA INTO WIREMOLD BELOW WHITEBOARD - SEE DWG. E-100.
- 4 REMOVE RECEPTACLE, BOX AND WIRING TO BE REUSED- SEE DWG. E-100.
- 5 REMOVE EXISTING SURFACE NONMETALLIC RACEWAY AND RELOCATE VOICE AND DATA OUTLETS INTO WIREMOLD BELOW WHITEBOARD. SEE DWG. E-100.
- 6 SWITCHES SHALL BE REMOVED. BOX AND WIRING SHALL REMAIN.
- 7 REMOVE 3-GANG LOW-VOLTAGE JACKS. PROVIDE BLANK COVER FOR EXISTING BOX.

**G11 KEYNOTES**

- ELECTRICAL REMOVALS NOTES**
- REFER TO FLOOR PLANS FOR SCOPE OF WORK AREA. REFER TO ARCHITECTURAL AND MECHANICAL DRAWINGS FOR THE ADDITIONAL DEMOLITION SCOPE OF WORK.
  - COMPLETELY DEMOLISH ALL ELECTRICAL ITEMS WITHIN DEMOLITION AREA, UNLESS NOTED OR INDICATED OTHERWISE. DEMOLITION SHALL INCLUDE BUT NOT BE LIMITED TO WIRING DEVICES, OUTLET BOXES, PULL BOXES, LIGHTING FIXTURES AND SWITCHES, WIRING AND CONDUIT, TELECOMMUNICATIONS, ETC.
  - EXISTING ITEMS TO BE REMOVED ARE INDICATED FOR INFORMATIONAL PURPOSES, BUT THE DRAWINGS ARE NOT INTENDED TO INDICATE ALL ITEMS TO BE REMOVED.
  - EXISTING FIRE ALARM SYSTEM SHALL REMAIN, EXCEPT WHERE SYSTEM COMPONENTS ARE LOCATED IN WALLS TO BE REMOVED. WHERE WALLS ARE TO BE REMOVED, REMOVE AND RELOCATE EXISTING FIRE ALARM COMPONENTS AS INDICATED AND AS REQUIRED. EXISTING FIRE ALARM COMPONENTS ARE GENERALLY NOT SHOWN.
  - DISCONNECT AND REMOVE ALL WIRING FOR EQUIPMENT TO BE REMOVED BACK TO THE POINT OF CONNECTION. NOTHING SHALL BE ABANDONED IN PLACE.
  - VERIFY ALL EXISTING SOURCES OF POWER TO EQUIPMENT PRIOR TO FINAL REMOVAL.
  - COORDINATE ALL SHUTDOWN PROCEDURES WITH THE OWNER PRIOR TO DISCONNECTING ANY CIRCUITS.
  - PROVIDE BLANK COVER PLATES FOR REMOVED POWER AND COMMUNICATIONS OUTLETS IN EXISTING WALLS TO REMAIN.
  - WHERE DEMOLITION IMPACTS WIRING TO EXISTING ITEMS TO REMAIN, PROVIDE WIRING AND CONNECTIONS AS REQUIRED TO RE-FEED ITEMS TO REMAIN.
  - THE WORK INCLUDES DISPOSAL OF ALL REMOVED ELECTRICAL ITEMS INCLUDING BALLASTS AND LAMPS. LEGALLY DISPOSE OF ALL HAZARDOUS MATERIALS.

**J11 ELECTRICAL REMOVALS NOTES**

**J1 LEVEL 2 ELECTRICAL REMOVALS PLAN**

1/4" = 1'-0"

FOR ADDITIONAL INFORMATION, REFER TO PROJECT MANUAL.

CONTENT:	ELECTRICAL REMOVALS PLAN AND NOTES
DRAWN BY:	GMC
PROJECT NO.:	16-005-00
DATE:	3/17/2016
REVISED:	
SCALE:	1/4" = 1'-0"
<b>ED-100</b>	
Project Phase:	
BID DOCUMENTS	
<small>COPYRIGHT © 2015 BY LAVALLEEBRENSINGER PROFESSIONAL ASSOCIATION. ALL RIGHTS RESERVED. NO REPRODUCTION WITHOUT PERMISSION.</small>	

3/17/2016 2:20:33 PM N:\Projects\016\16009 - USM Lab A203 Upgrade\Design Phase\2 DRAWINGS\ED100.dwg