

LUMINAIRE SCHEDULE									
TYPE	DESCRIPTION	MFR	CATALOG SERIES NUMBER SEE NOTE 1	MOUNTING	VOLTS	LAMP		KEY NOTES	
						WATTS	TYPE		
R1	2x2 HIGH PERFORMANCE TROFFER	FINELITE	HPR-LED-A-2x2-DCO-SO-3000K	RECESSED	277	37	LED ARRAY 3000K		
L1	LED UNDERCABINET LIGHT	PRIMA	55T18-30K	UNDERCABINET	120	6	LED ARRAY 3000K		
NOTES 1 NOTE THAT THESE NUMBERS ARE NOT COMPLETE CATALOG NUMBERS. PROVIDE ALL REQUIREMENTS ON SCHEDULE, NOTES, SPECS, AND DRAWINGS COMBINED. 2 VERIFY CEILING STRUCTURE AND MOUNTING HEIGHT PRIOR TO ORDERING ANY LIGHT FIXTURES.									

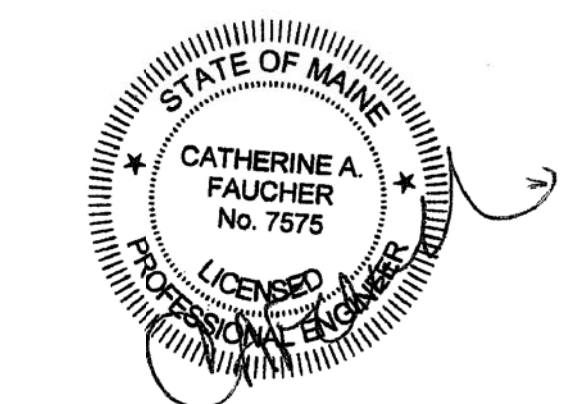
A6 LUMINAIRE SCHEDULE

- 1 ABOVE CEILING RECEPTACLE AND VIDEO CONNECTIONS TO PROJECTOR ARE EXISTING TO REMAIN.
- 2 PROJECTOR CONTROL BOX INPUT CONNECTION PLATE IS EXISTING TO REMAIN.
- 3 RELOCATE EXISTING PROJECTOR INPUT JACKS TO WIREMOLD BELOW WHITEBOARD. PROVIDE (1) 1-GANG PLATE WITH (1) 1/8" PHONO PLUG AND (1) VGA JACK AND (1) 1-GANG PLATE WITH (3) RCA JACKS (WHITE, YELLOW, RED) AND (1) HDMI JACK.
- 4 LIGHTING CONTROL IN A203 SHALL BE A-B-C SWITCHING GROUPS AS INDICATED WITH AUTO OFF VIA CEILING MOUNTED OCCUPANCY SENSORS. CONNECT 3-WAY SWITCHES TO LOAD SIDE OF OCCUPANCY SENSORS. PROVIDE 3-WAY SWITCHES AND COVERPLATE AT EXISTING BOX. EXISTING WIRING SHALL BE REUSED WHERE CODE COMPLIANT.
- 5 PROVIDE GFCI RECEPTACLES AT EXISTING OUTLET BOX LOCATION. CONNECT TO EXISTING WIRING.
- 6 MOUNT WIREMOLD AT 46" AFF.
- 7 UTILIZE EXISTING OUTLET BOX LOCATION AND WIRING TO FEED WIREMOLD RECEPTACLES.
- 8 RELOCATE EXISTING VOICE AND DATA OUTLETS INTO WIREMOLD BELOW WHITEBOARD.
- 9 PROVIDE INDICATED DEVICE AT LOCATION FROM WHICH EXISTING DEVICE WAS REMOVED.
- 10 ROUTE WIREMOLD VERTICALLY UP WALL AND TERMINATE ABOVE CEILING. COORDINATE WITH ARCHITECTURAL INTERIOR ELEVATIONS.

C6 KEYNOTES

TO THE EXTENT POSSIBLE, UTILIZE EXISTING BRANCH CIRCUITS AND WIRING TO CREATE INDICATED LAYOUT. CIRCUIT NUMBERS SHOWN ARE FOR REFERENCE ONLY AND INDICATE INTENDED GROUPING, NOT ACTUAL CIRCUIT NUMBERS. WHERE ADDITIONAL CIRCUITS ARE REQUIRED, WIRE AND CONNECT TO SPARE 20A, 1P CIRCUIT BREAKERS IN PANEL DP3 LOCATED IN ROOM A311 ON THE THIRD FLOOR (DIRECTLY ABOVE A211 ON SECOND FLOOR).

Allied Engineering
Structural Mechanical Electrical Commissioning
160 Veranda Street
Portland, Maine 04103
P: 207.251.2366
F: 207.251.2366
Web: www.allied-eng.com



University of Southern Maine

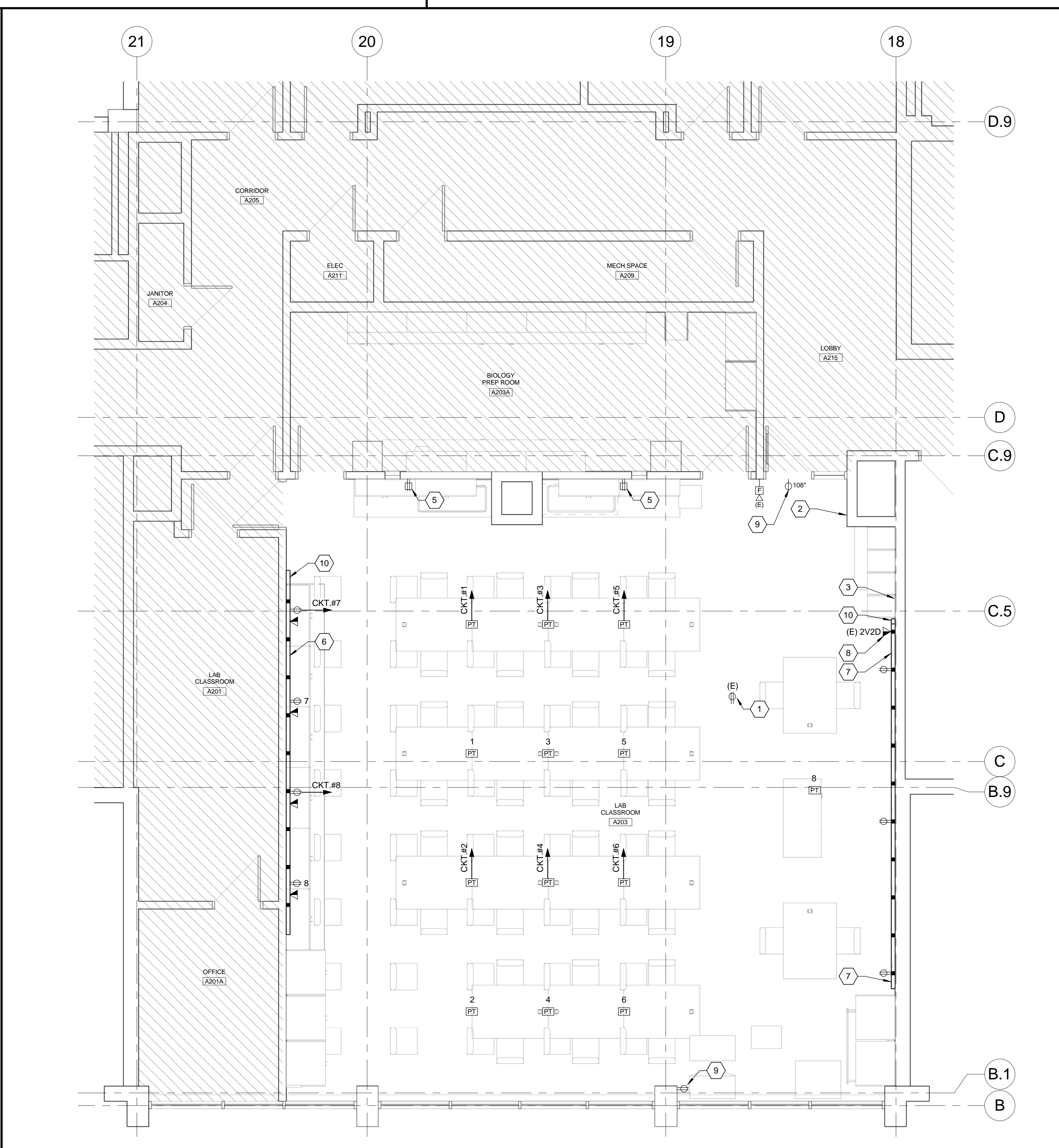
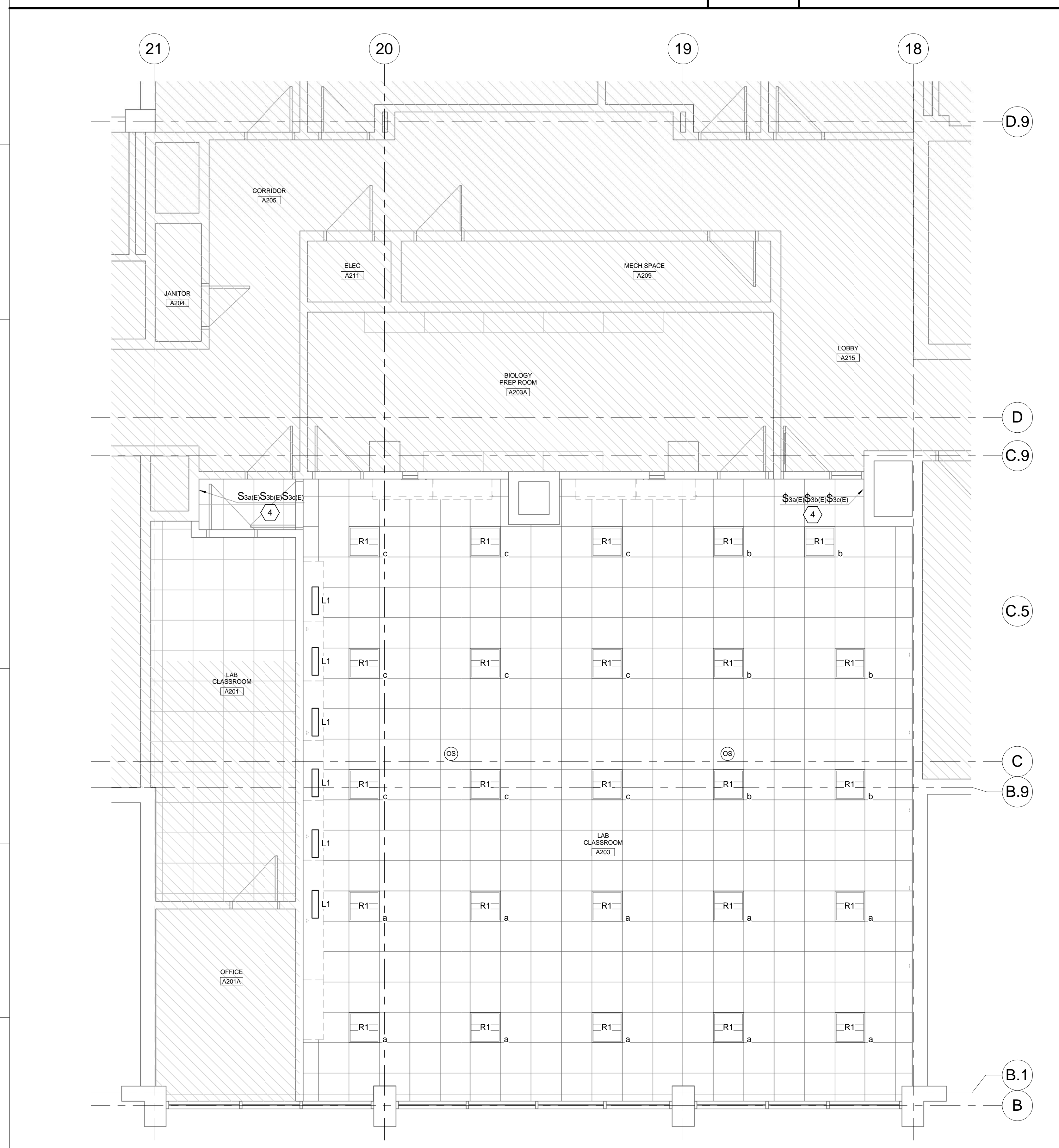
**Science Building
Lab A203 Renovation**

70 Falmouth Street
Portland, ME 04104

NO.	DESCRIPTION	DATE
ISSUED FOR PERMIT		03/17/2016

FOR ADDITIONAL INFORMATION, REFER TO PROJECT MANUAL

CONTENT:	ELECTRICAL LIGHTING AND POWER PLANS
DRAWN BY:	GMC
PROJECT NO.:	16-005-00
DATE:	3/17/2016
REVISED:	
SCALE:	As Indicated
E-100	
Project Phase:	BID DOCUMENTS
COPYRIGHT © 2015 BY LAVALLEEBRENSINGER PROFESSIONAL ASSOCIATION. ALL RIGHTS RESERVED. NO REPRODUCTION WITHOUT PERMISSION.	



J1 LEVEL 2 LIGHTING PLAN
1/4" = 1'-0"

J8 LEVEL 2 POWER AND SYSTEMS PLAN
1/4" = 1'-0"

3/17/2016 3:19:19 PM N:\Projects\016\0609 - USM Lab A203 Upgrade\Design Phase\2 Drawings\CS16006.rvt