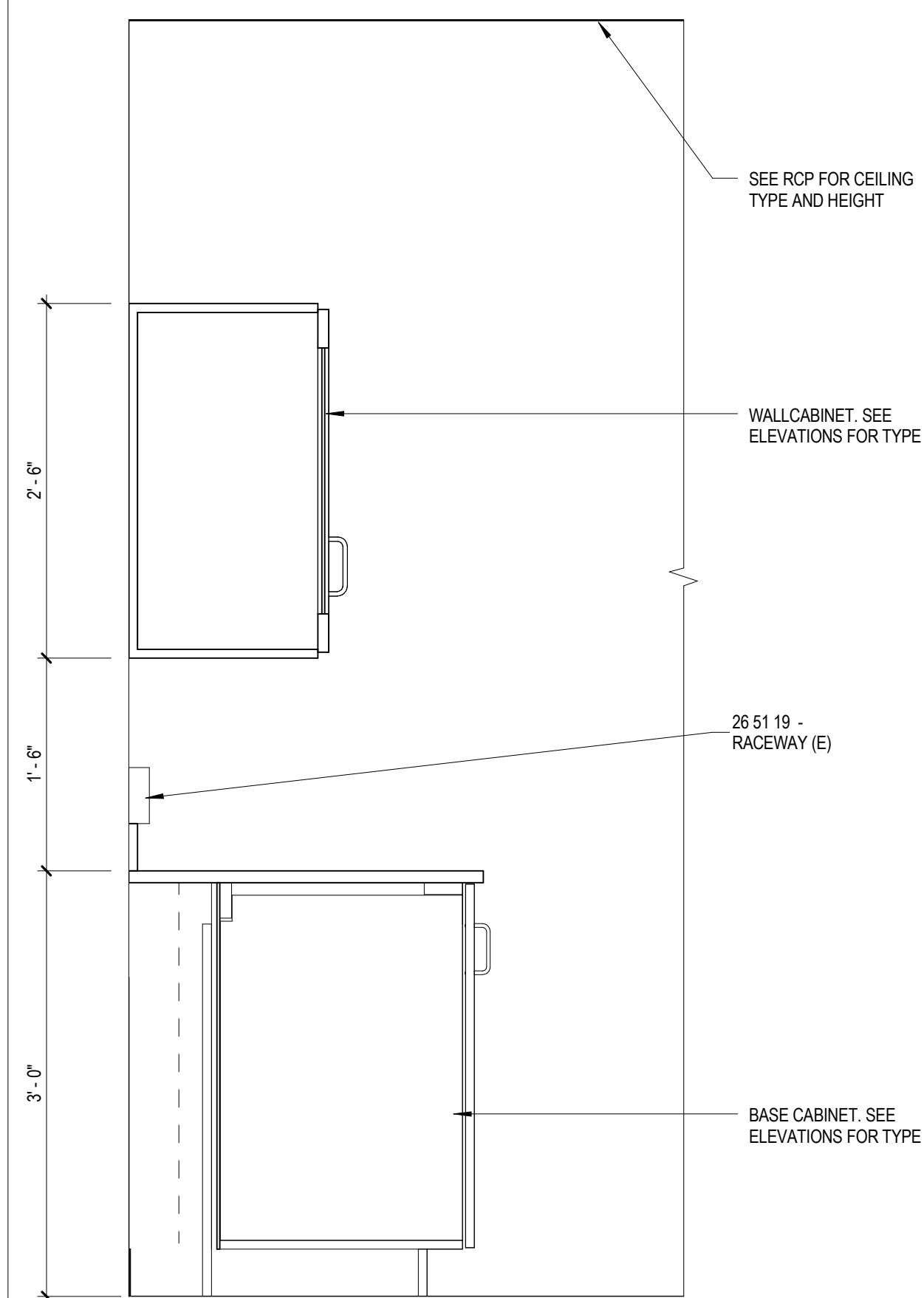
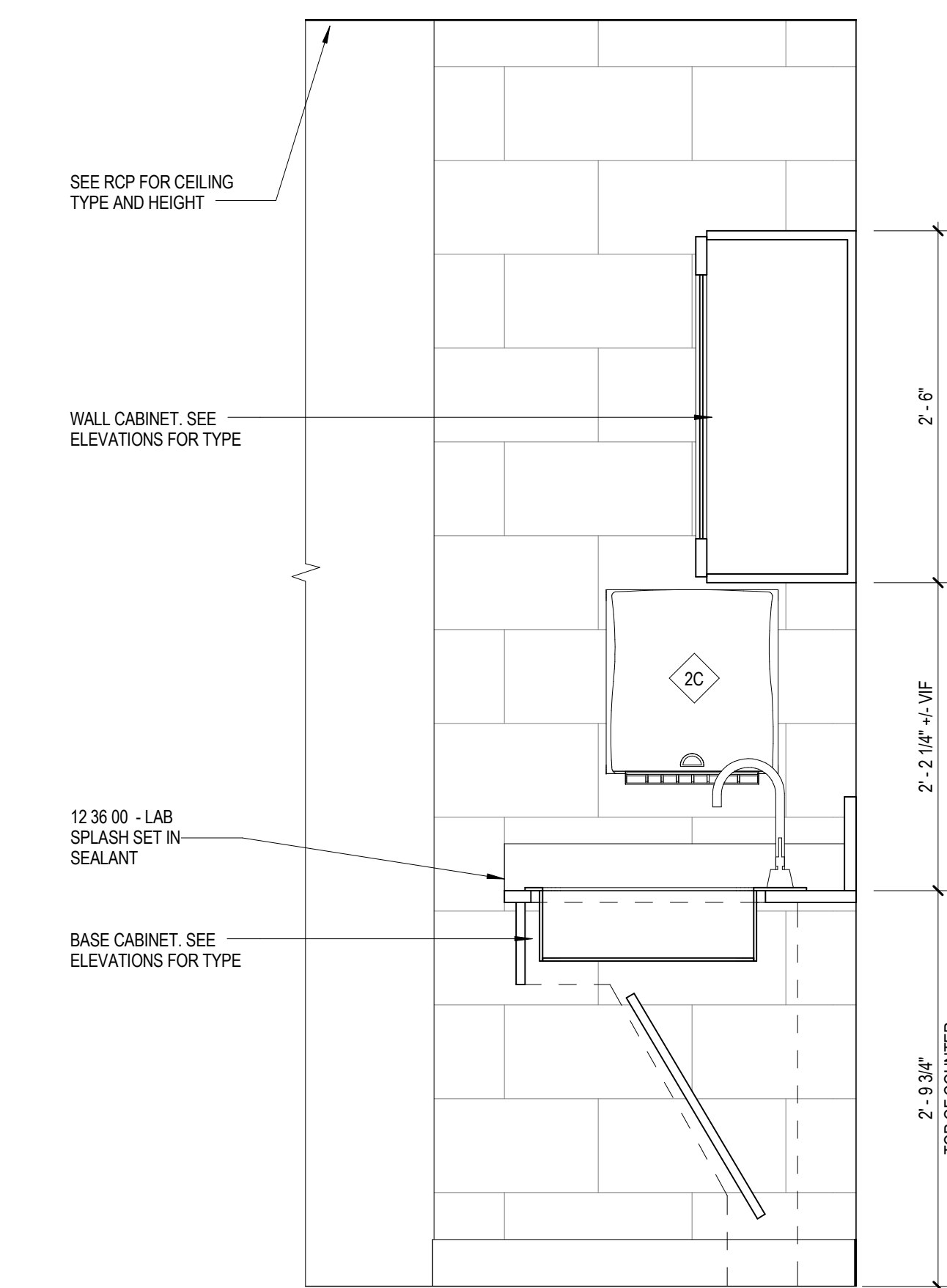


MILLWORK - CASEWORK - COUNTERTOP NOTES:

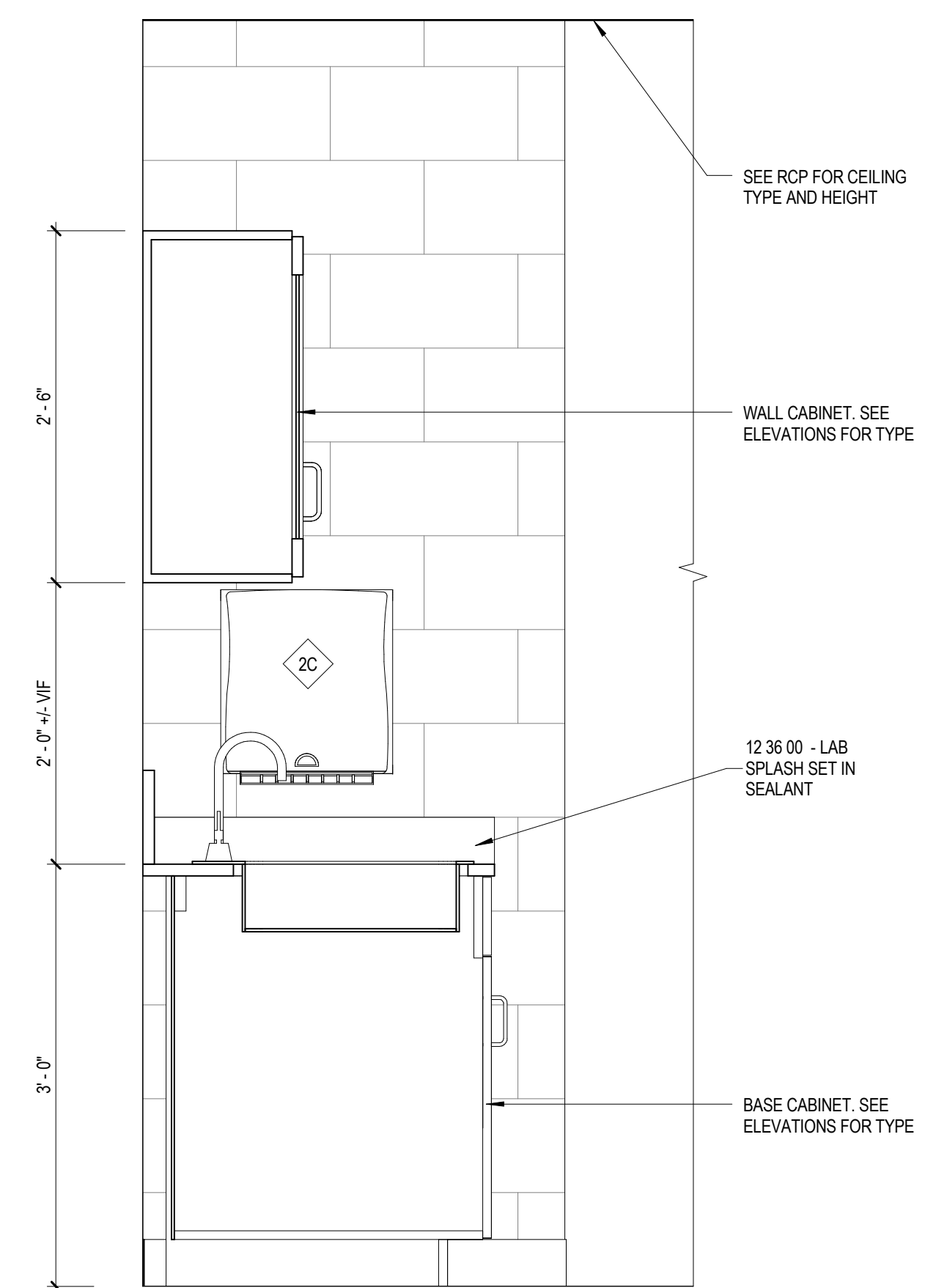
- General Notes**
1. Verify all conditions and dimensions in the field prior to fabrication.
 2. Verify sizes and requirements of all Owner furnished equipment to be set into millwork and casework.
 3. To the extent mechanical and electrical information indicated on architectural drawings, it is provided for convenience only and is not necessarily intended to represent all work required.
- Cabinets**
1. Finish exposed cabinet sides at ends, knee spaces, appliance recesses, etc to match face.
 2. Provide complete base kickboards scribed to uneven floors.
 3. Provide matching scribes to within 1/16" of adjacent surfaces.
 4. Provide matching fillers (face and upper cabinet top & bottom) where required.
 5. Provide locks at all doors and drawers.
- Countertops**
1. All countertops to be epoxy resin (ER) finish unless noted otherwise (U.N.O.)
 2. Return side splash to align with edge of countertop nosing.
 3. Provide an allowance of 1 grommets per open counter, to be located on the shop drawings.



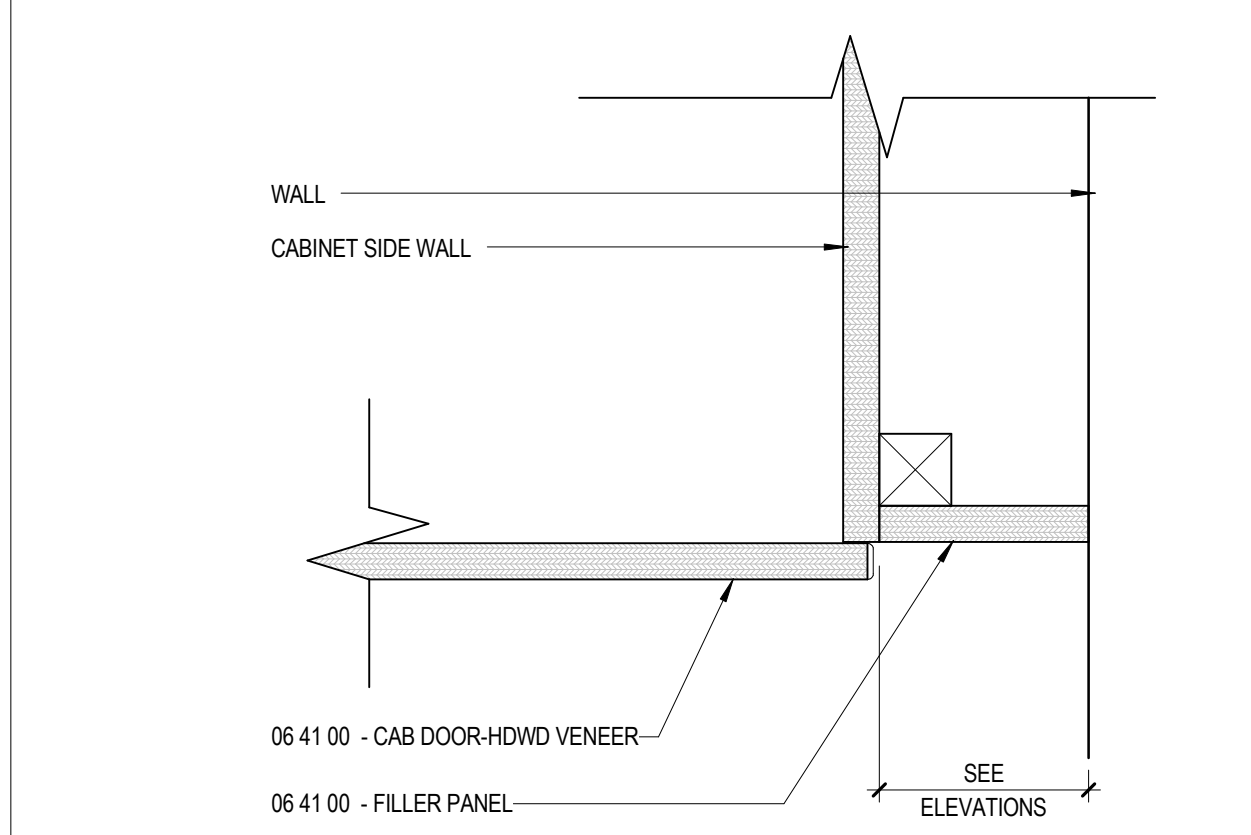
D3 SECTION AT STORAGE CABINETS
A7.1 1" = 1'-0"



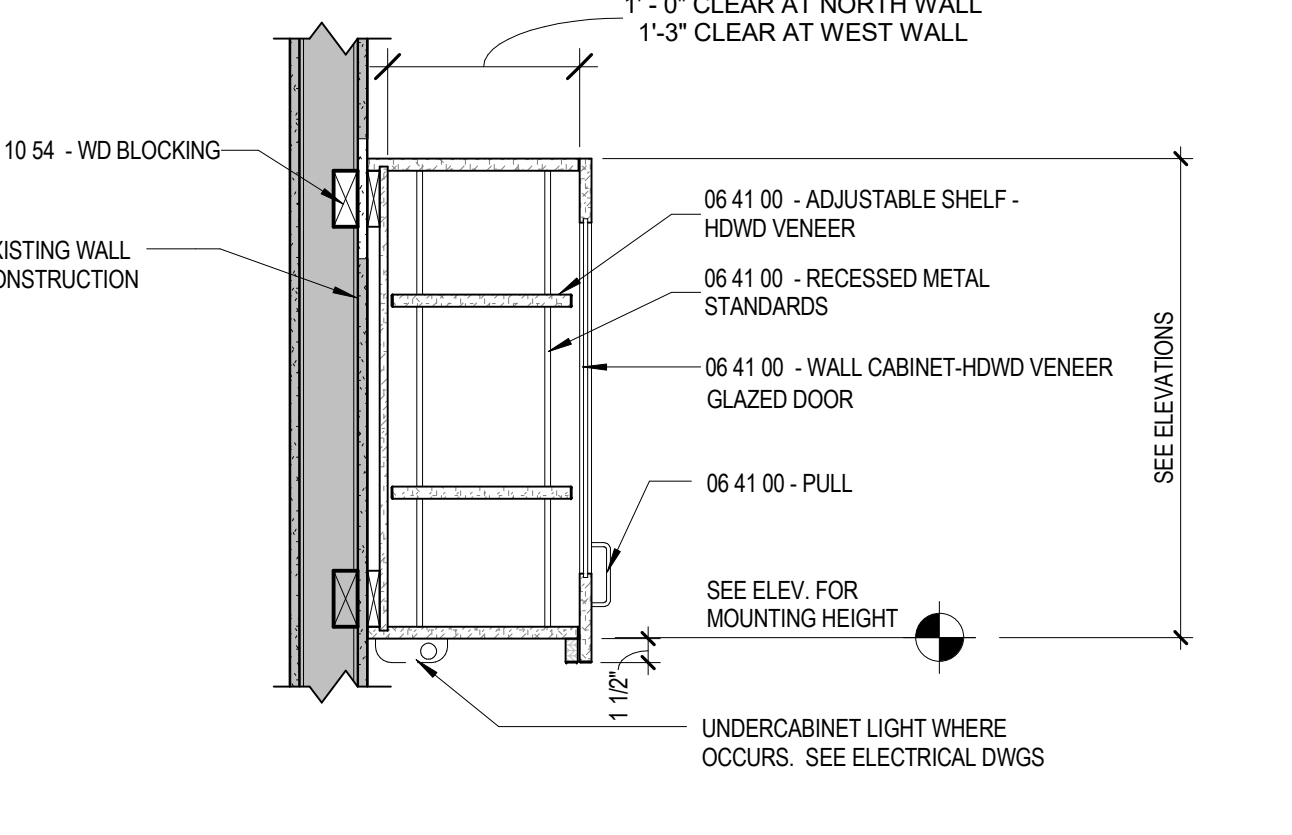
D6 SECTION AT ACCESSIBLE SINK
A7.1 1" = 1'-0"



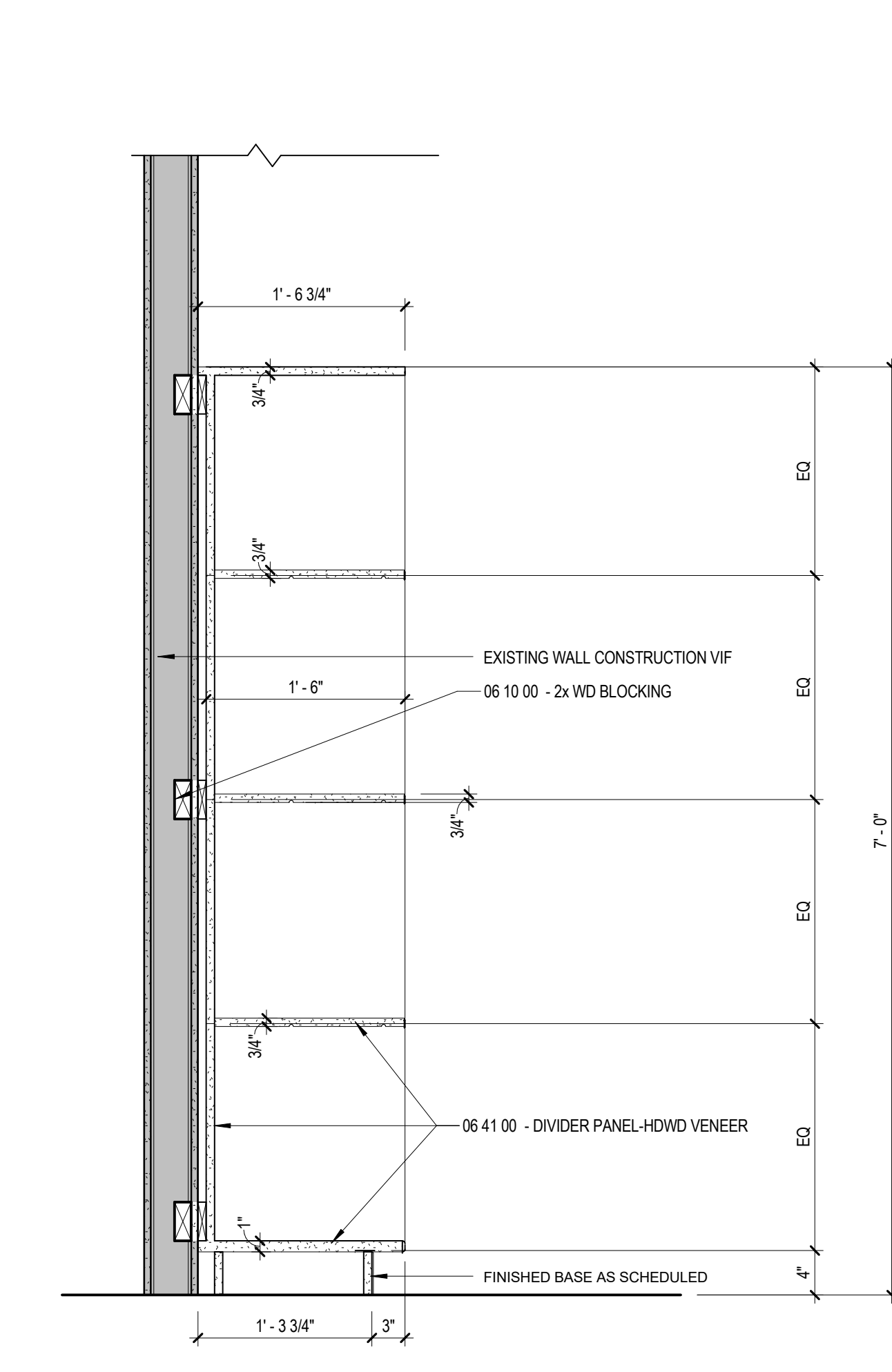
D9 SECTION AT SINK
A7.1 1" = 1'-0"



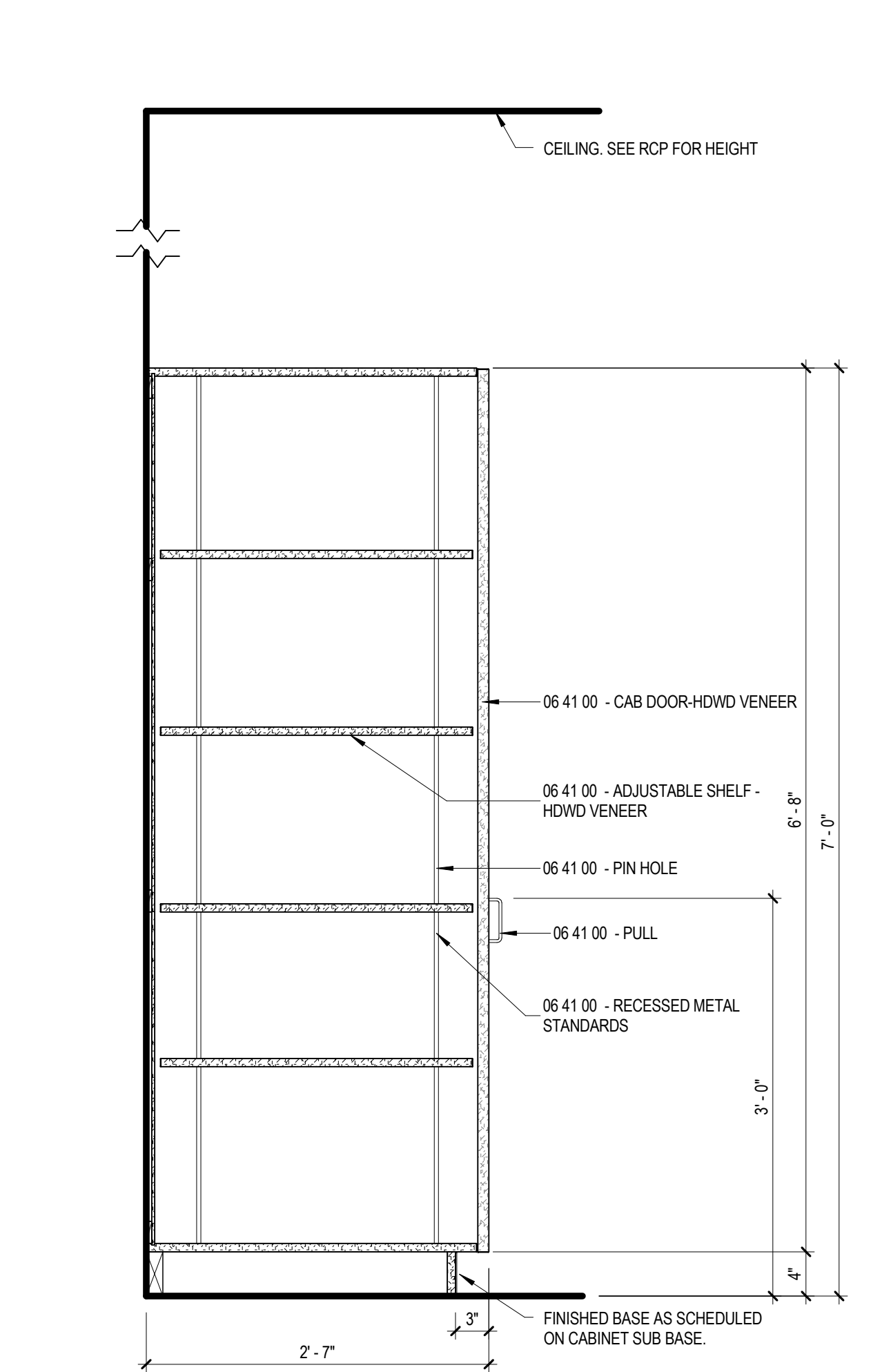
F3 CABINET FILLER DETAIL (FLUSH WITH CABINET)
A7.1 3" = 1'-0"



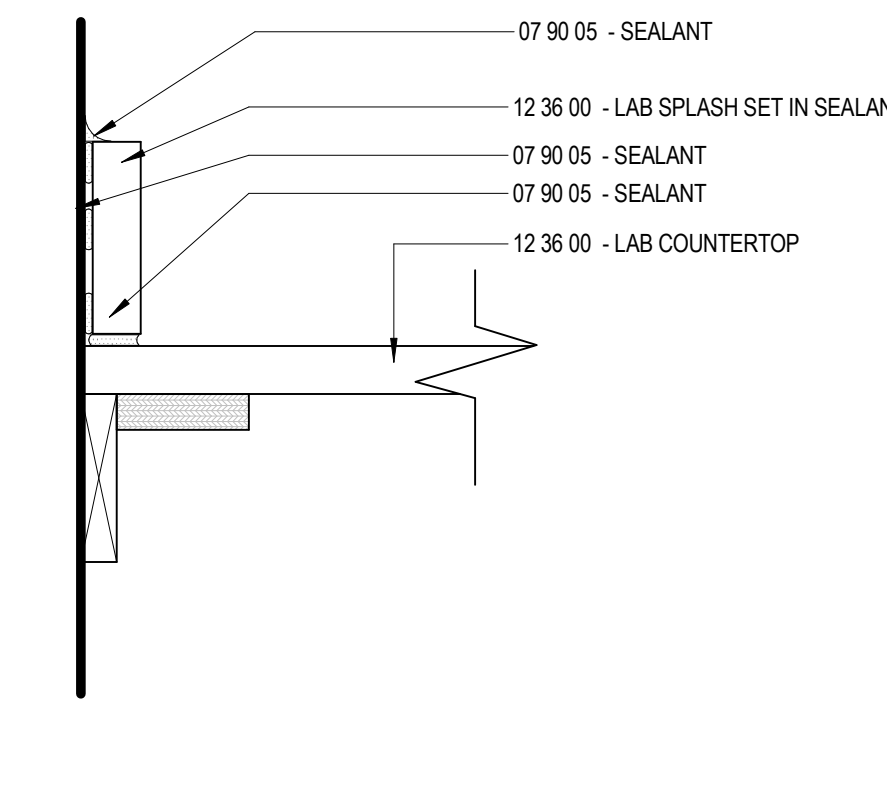
F6 WALL CABINET SECTION (WCG)
A7.1 1" = 1'-0"



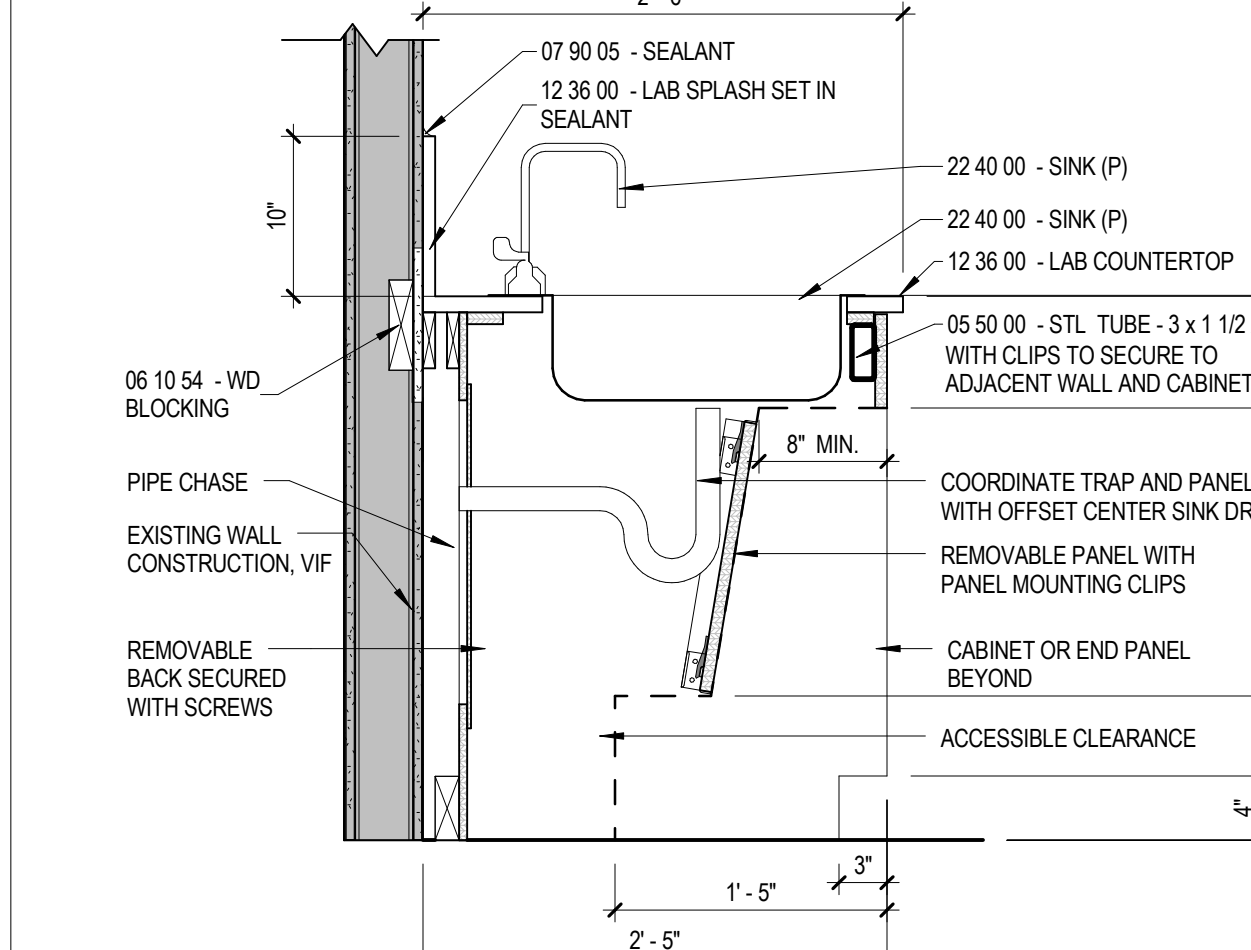
H9 OPEN STORAGE CUBBIES
A7.1 1" = 1'-0"



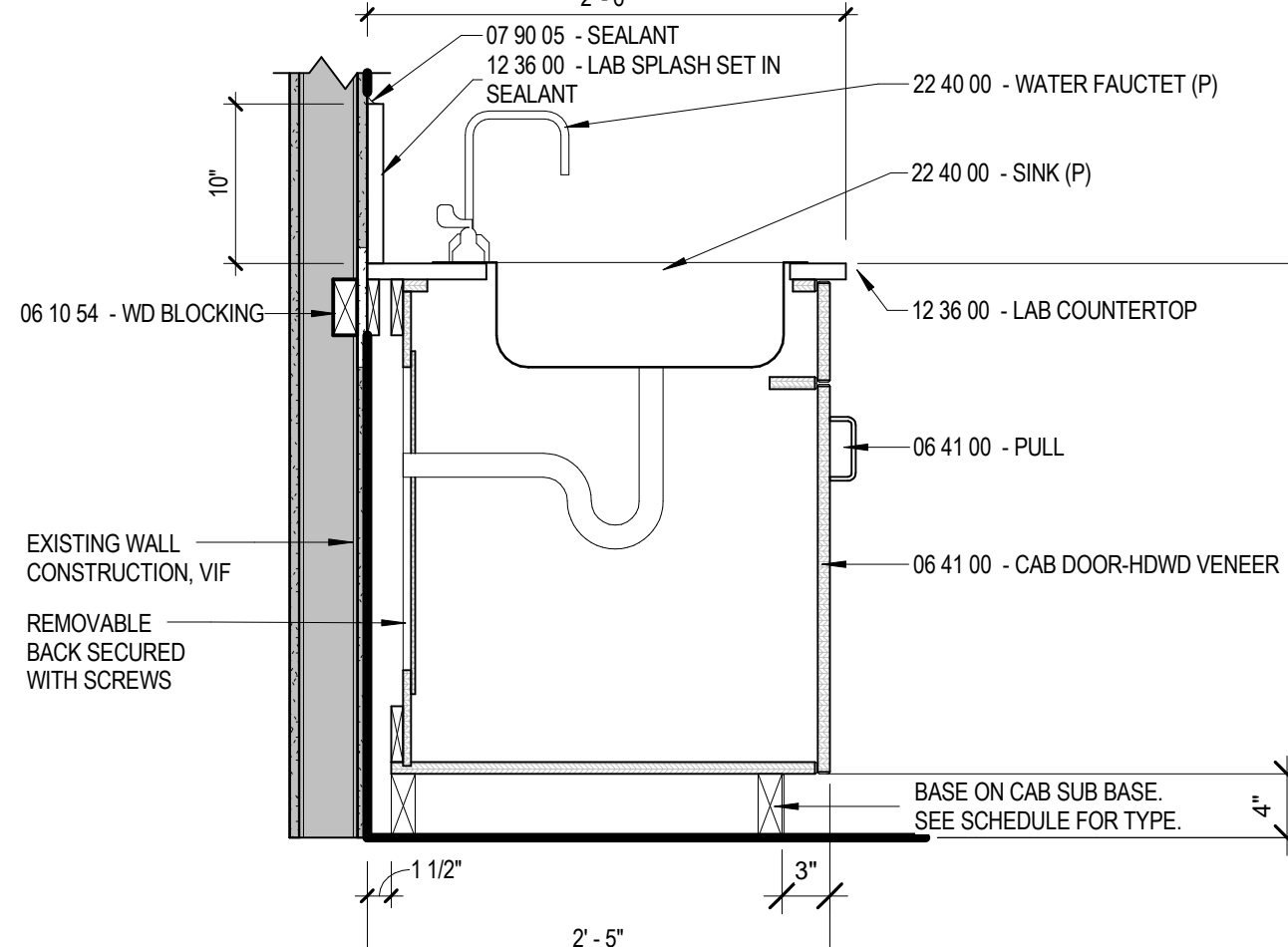
H12 TALL STORAGE CABINET SINGLE DOOR (TC)
A7.1 1" = 1'-0"



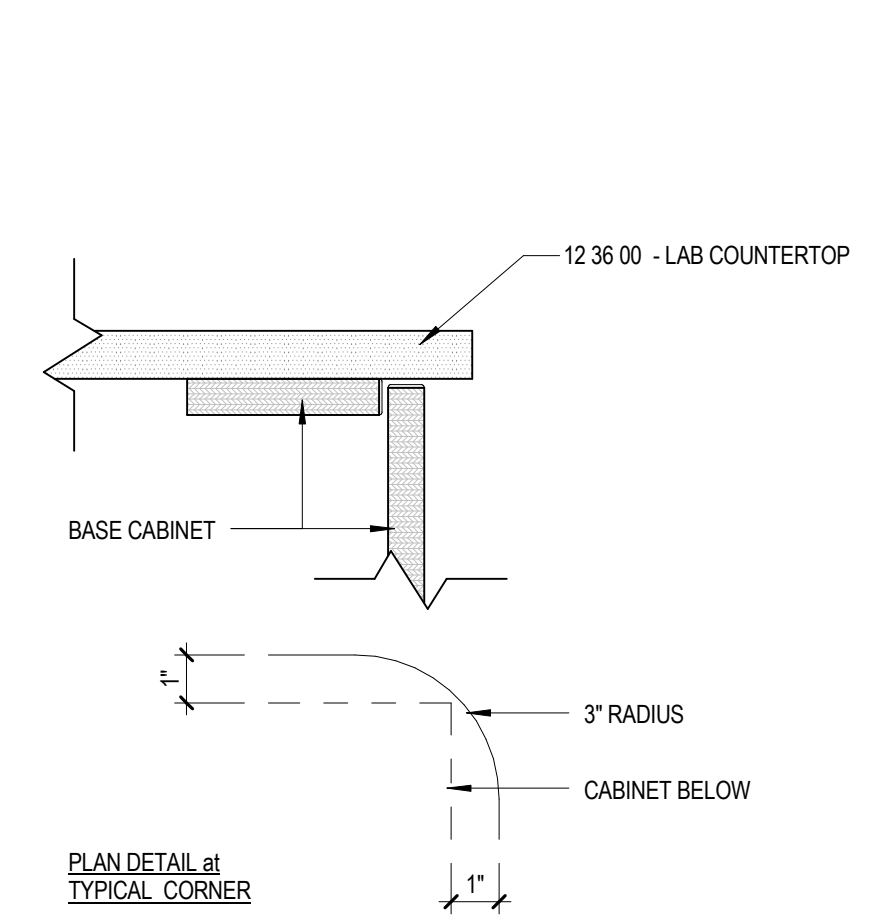
H1 BACKSPLASH DETAIL
A7.1 3" = 1'-0"



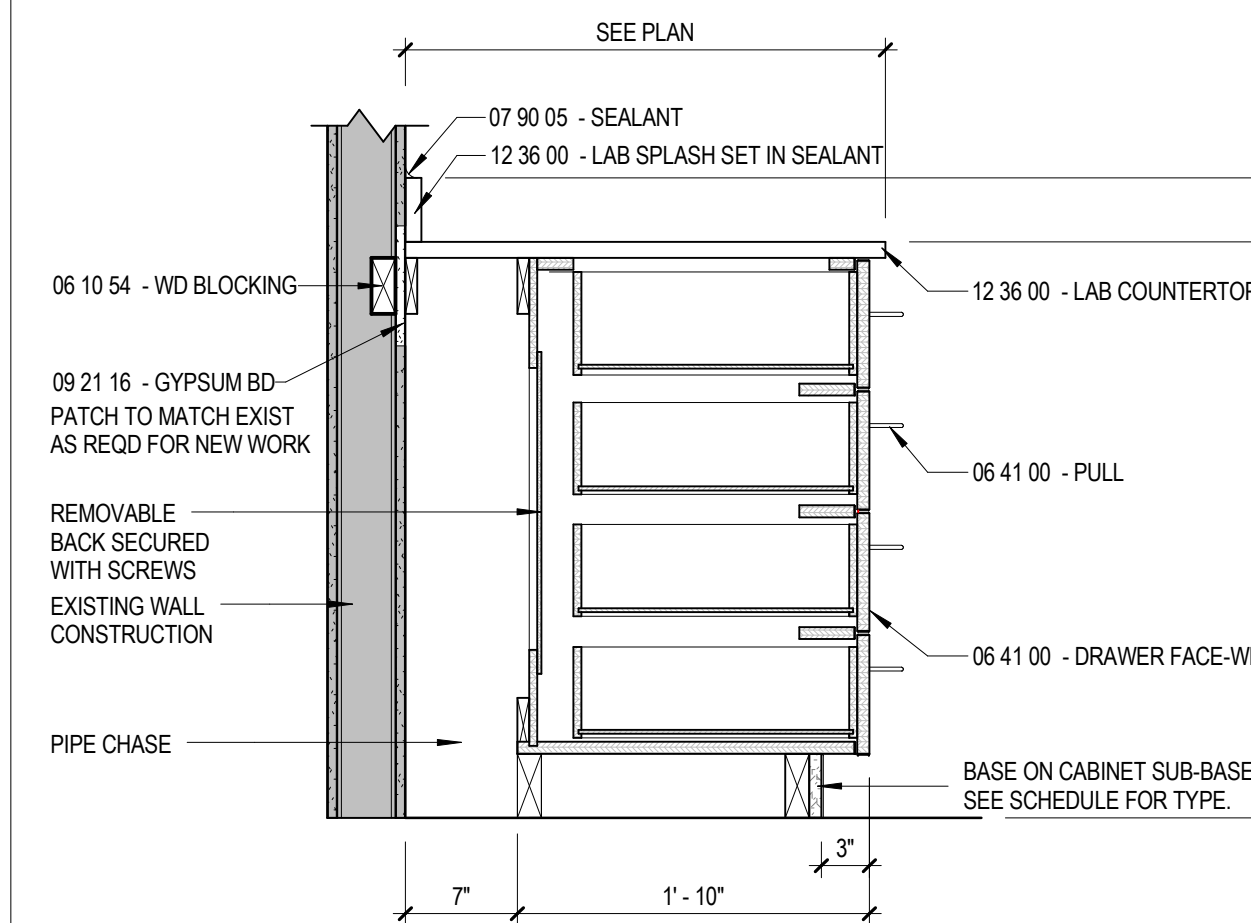
H3 BASE CABINET SECTION w ACCESSIBLE SINK (SA)
A7.1 1" = 1'-0"



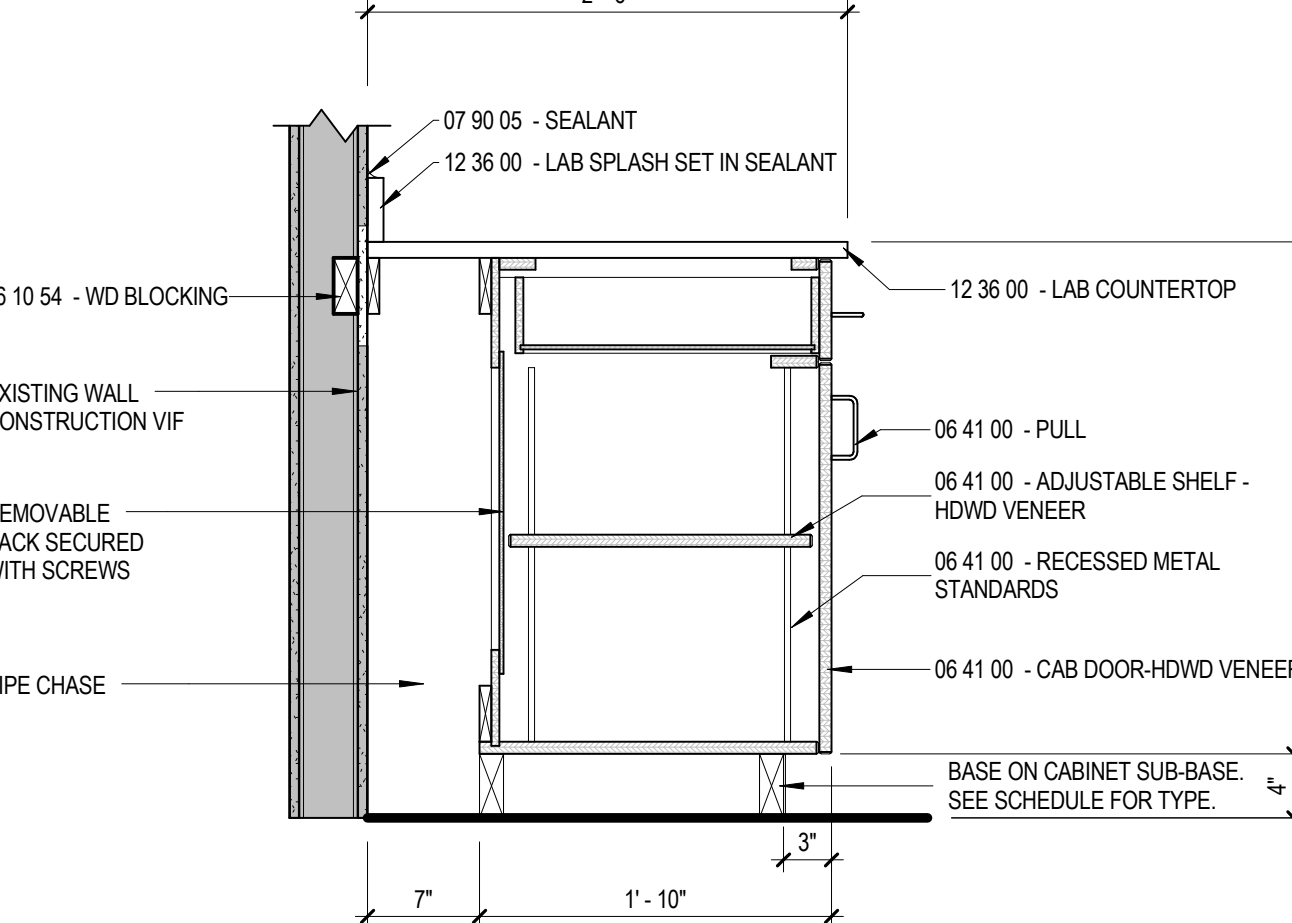
H6 BASE CABINET SECTION w SINK (BCSB)
A7.1 1" = 1'-0"



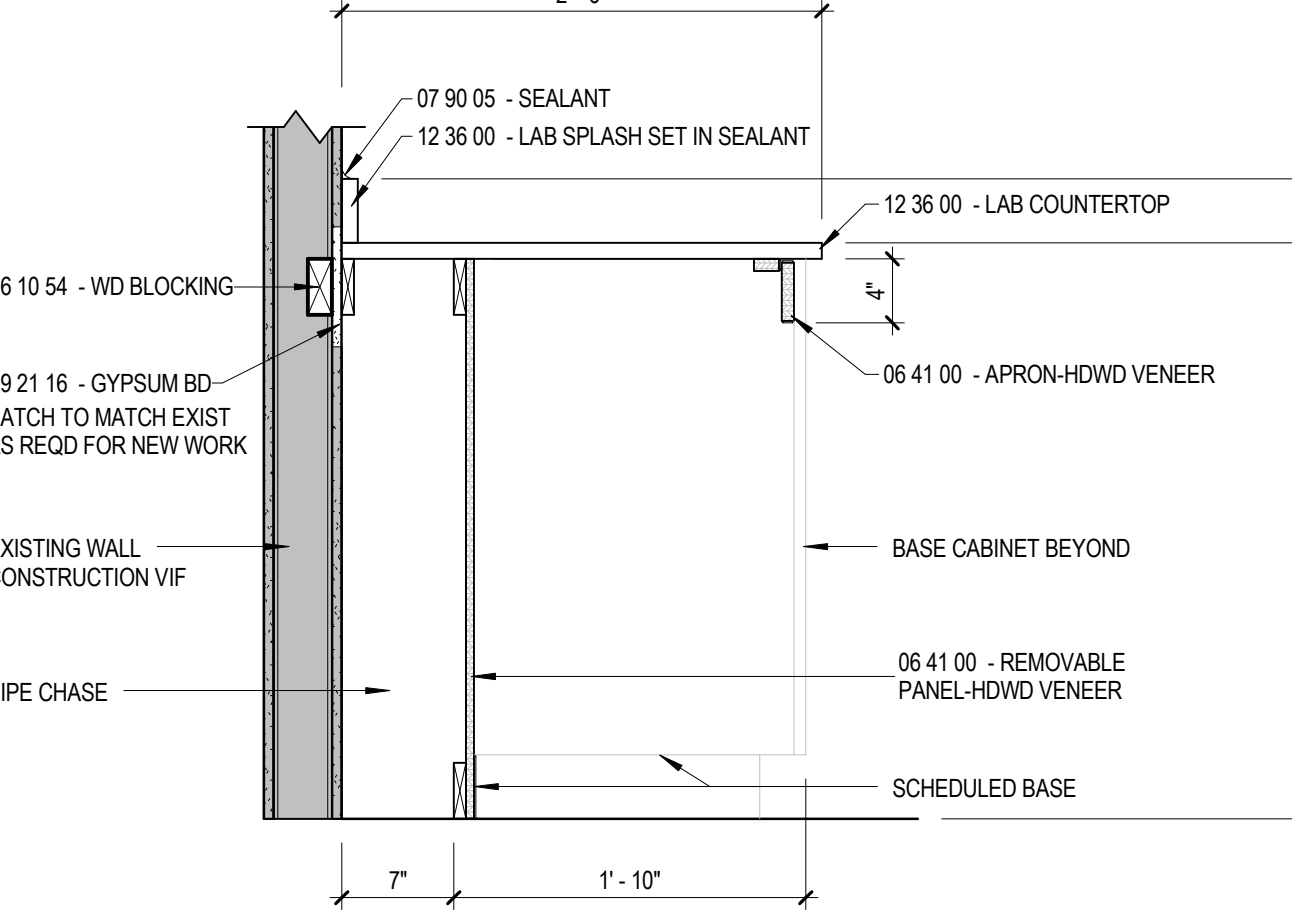
J1 COUNTER EDGE DETAIL
A7.1 3" = 1'-0"



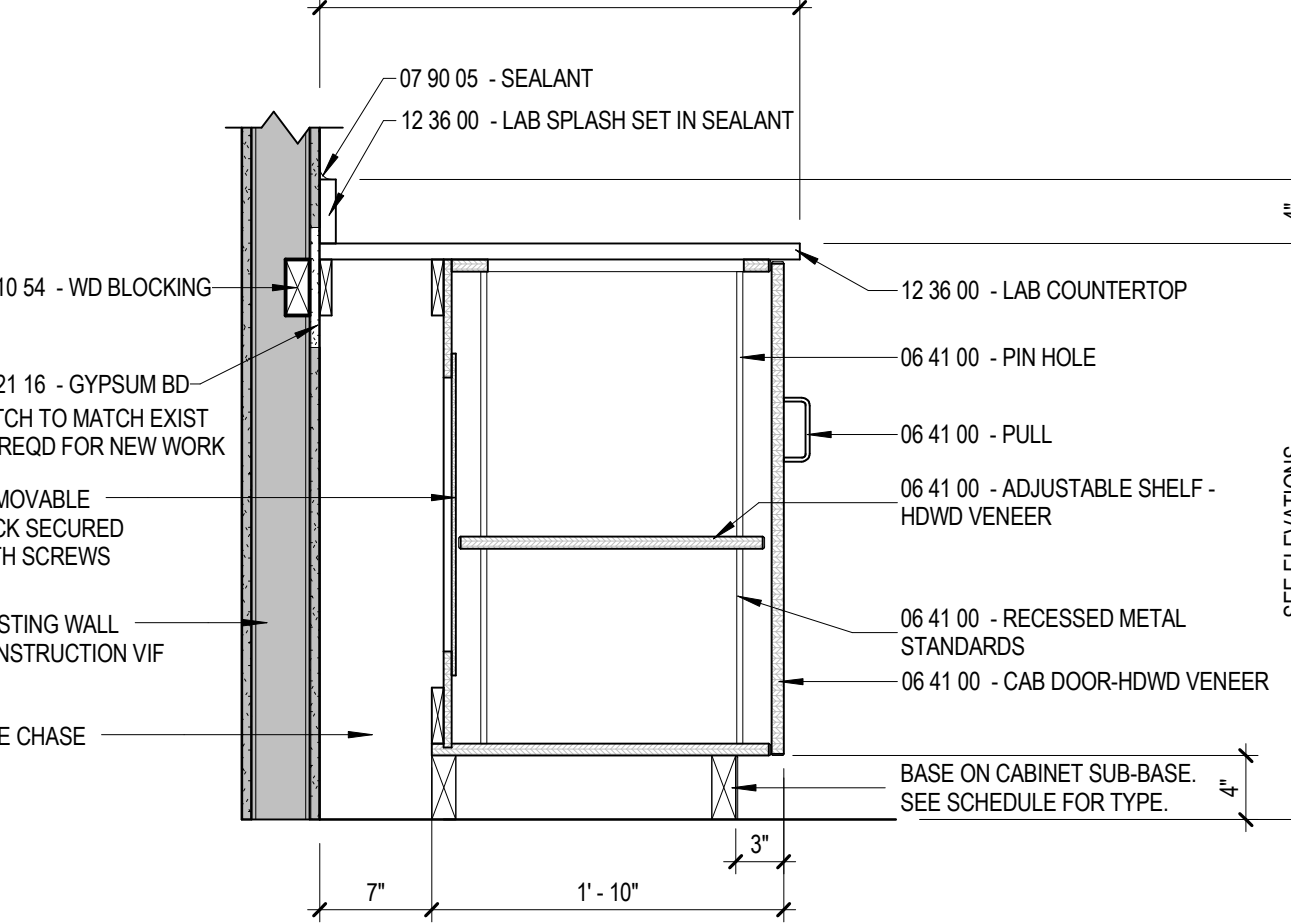
J3 BASE CABINET SECTION 4 DRAWER (BCD4)
A7.1 1" = 1'-0"



J6 BASE CABINET w DRAWER SECTION (BCD)
A7.1 1" = 1'-0"



J9 BASE CABINET SECTION OPEN COUNTER (OC)
A7.1 1" = 1'-0"



J12 BASE CABINET SECTION (BC)
A7.1 1" = 1'-0"

University of Southern Maine

Science Building Lab A203 Renovation

70 Falmouth Street
Portland, ME 04104

NO.	DESCRIPTION	DATE
	ISSUED FOR PERMIT	03/17/2016



FOR ADDITIONAL INFORMATION, REFER TO PROJECT MANUAL.

CONTENT:
MILLWORK DETAILS

DRAWN BY: MTM

PROJECT NO: 16-005-00

DATE: 3/17/2016

REVISED:

SCALE: As indicated

A7.1

Project Phase

BID DOCUMENTS

COPYRIGHT © 2015 BY LAVALLEE-BRENSINGER PROFESSIONAL ASSOCIATION. ALL RIGHTS RESERVED. NO REPRODUCTION WITHOUT PERMISSION.