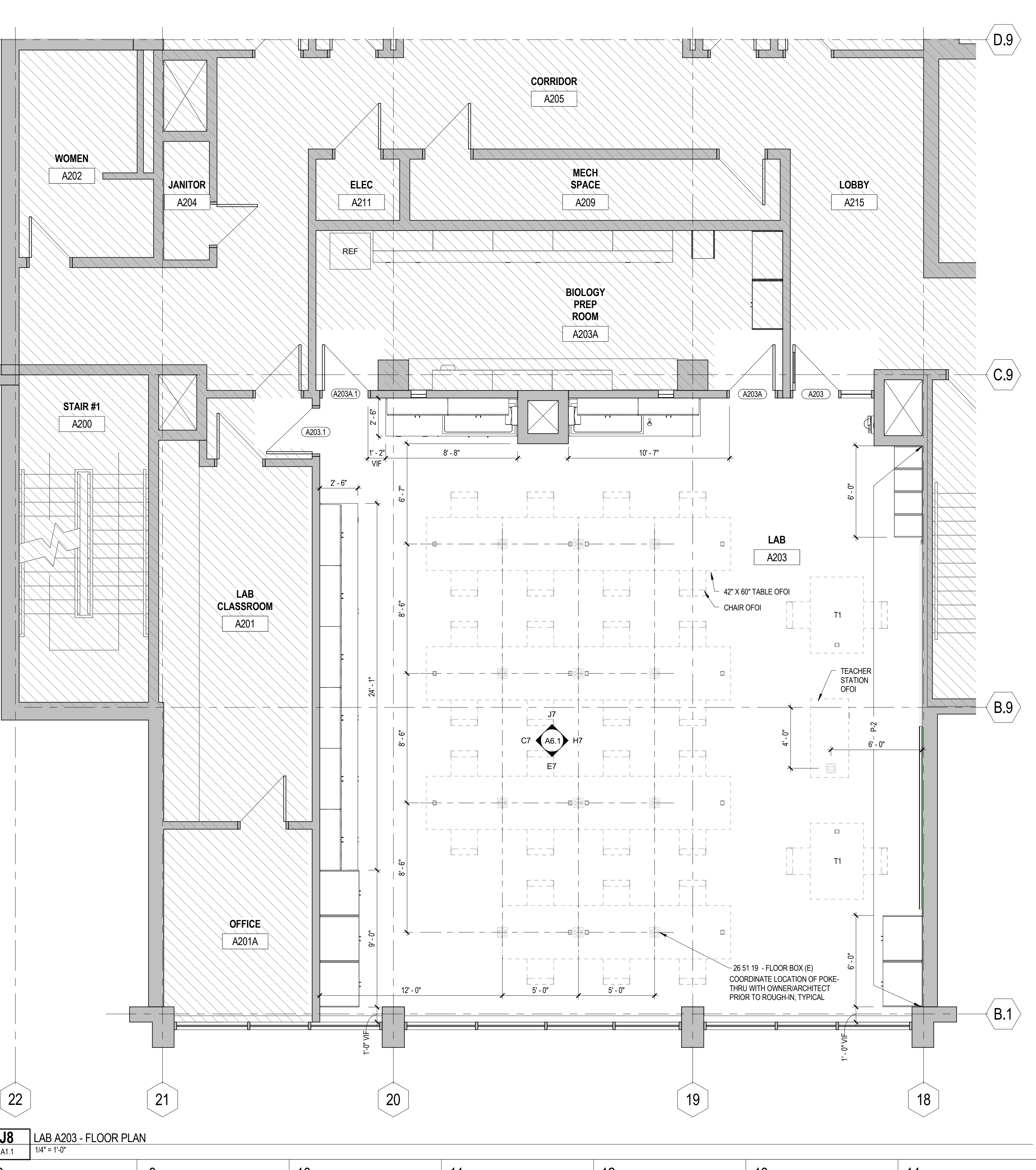
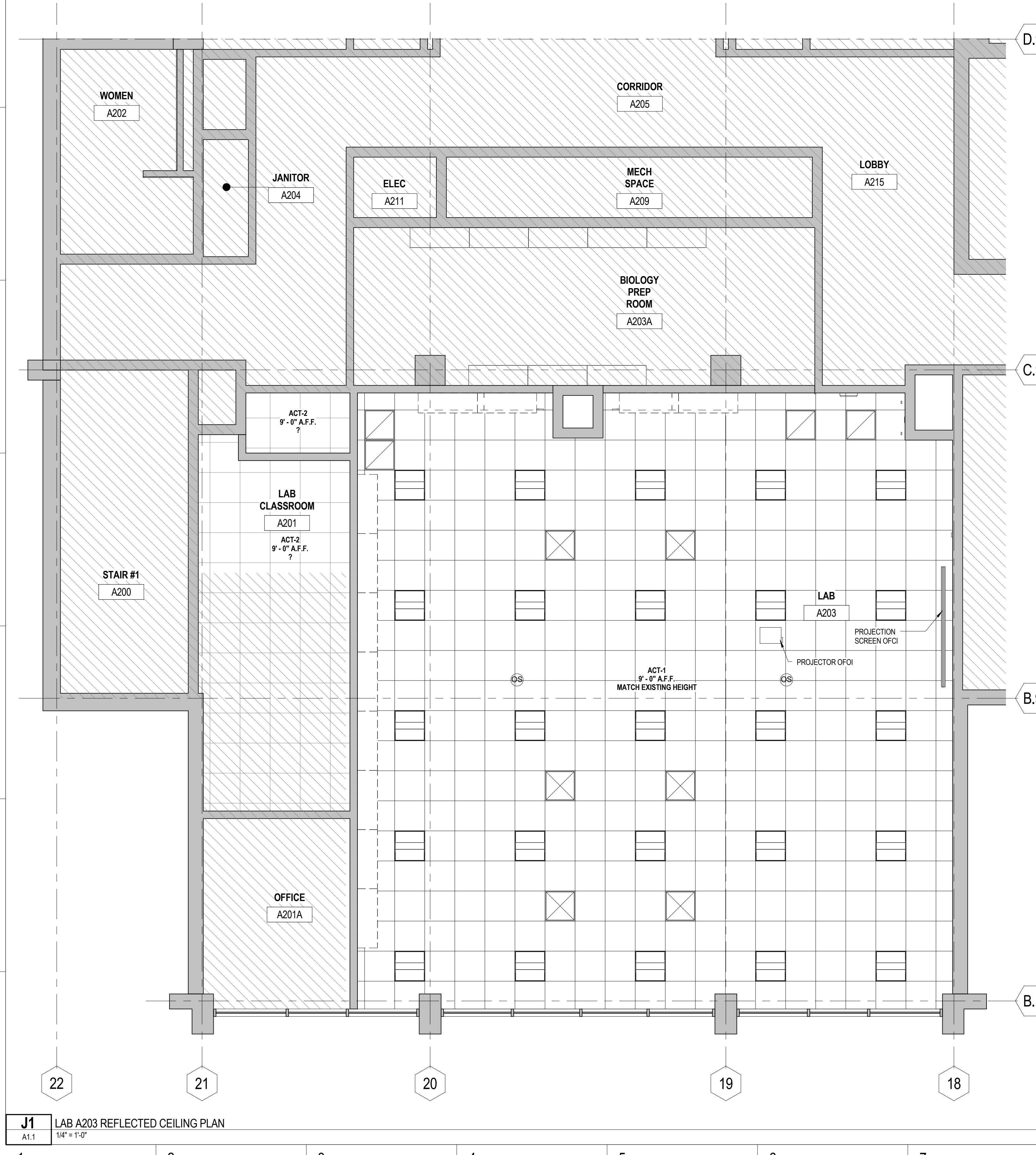


ID FINISH SCHEDULE										
ROOM #	ROOM NAME	FIN FLOORING	FIN WALL BASE	FIN WALL FINISH	FIN WALL PROTECTION	FIN MILLWORK/ CASEWORK	FIN COUNTERTOP MATERIAL	FIN TEXTILES	FIN COMMENTS	REVISIONS
A203	LAB	VCT-1	RB-1	PT-1 & PT-2	-	-	ER-1	-	-	-

FINISH LEGEND			
09 65 00 RESILIENT FLOORING	RF-1	TYPE: RESILIENT FLOOR TILE MANUF: ARMSTRONG SERIES: STANDARD EXCELON IMPERIAL TEXTURE WIDTH/SIZE: 12" X 12" COLOR: TO BE SELECTED	12 36 00 EPOXY RESIN
	RB-1	TYPE: RUBBER WALL BASE MANUF: JOHNSONITE SERIES: TRADITIONAL SIZE: 4" COLOR: TO BE SELECTED	ER-1
09 90 00 PAINT and COATING	PT-1	TYPE: PAINT MANUF: SHERWIN WILLIAMS COLOR: USM STANDARD WHITE FINISH: EGGSHELL	MISCELLANEOUS
	PT-2	TYPE: PAINT MANUF: SHERWIN WILLIAMS COLOR: TBD FROM USM STANDARD COLORS FINISH: EGGSHELL	TBD TO BE DETERMINED
			PTM PATCH TO MATCH
			ETR EXISTING TO REMAIN

DOOR & FRAME SCHEDULE													
MARK	FROM ROOM		TO ROOM		DOOR				FRAME		HARDWARE SETS	COMMENTS	REVISION
	No.	NAME	No.	NAME	WD	HT	THK	MATL	TYPE	RATING			
A203	A203	LAB	A215	LOBBY	ETR	ETR	ETR	WD (ETR)	G	-	HM (ETR)	ETR	1
A203.1	A203	LAB	A203A	BIOLOGY PREP ROOM	ETR	ETR	ETR	WD (ETR)	F	-	HM (ETR)	ETR	1
A203A	A203	LAB	A203A	BIOLOGY PREP ROOM	ETR	ETR	ETR	WD (ETR)	F	-	HM (ETR)	ETR	1
A203A.1	A203	LAB	A203A	BIOLOGY PREP ROOM	ETR	ETR	ETR	WD (ETR)	F	-	HM (ETR)	ETR	1

DOOR HARDWARE SETS											
SET NO.	LOCKSET TYPE & LATCH FUNCTION	CLOSER TYPE & QUANTITY	HINGE TYPE & QUANTITY	STOPS	SEALS	PROTECTION	FLUSH BOLTS	ELECTRICAL	SPECIAL HARDWARE	HARDWARE BY OWNER	HARDWARE NOTES
1	CLASSROOM BORED	ETR	ETR	ETR	ETR	ETR	-	-	-	-	PREP EXISTING DOOR AND FRAME FOR NEW LOCKSET

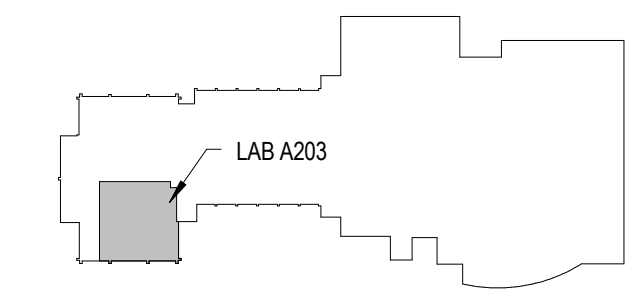


University of Southern Maine

Science Building Lab A203 Renovation

70 Falmouth Street
 Portland, ME 04104

NO.	DESCRIPTION	DATE
1	ISSUED FOR PERMIT	03/17/2016



CONTENT: FLOOR PLAN AND REFLECTED CEILING PLAN		
DRAWN BY:	MTM	
PROJECT NO.:	16-005-00	
DATE:	3/17/2016	
REVISED:		
SCALE:	As indicated	
A1.1		
Project Phase		
BID DOCUMENTS		
COPYRIGHT © 2016 BY LAVALLEE/BRENSINGER PROFESSIONAL ASSOCIATION. ALL RIGHTS RESERVED. NO REPRODUCTION WITHOUT PERMISSION.		

3/16/2016 2:08:42 PM C:\Project\160500_USM_Lab_A203_Central\116_mhama.mxd