

GRAPHICS LEGEND

OCCUPANCY

WORK AREA - USE GROUP B

EXISTING USE GROUP B

USE GROUP
OCCUPANT #

FIRE RATED CONSTRUCTION

NON-RATED SMOKE PARTITION

EXISTING 1 HR FIRE BARRIER

EXISTING 2 HR FIRE BARRIER

FIRE RESISTANCE RATING OF EXISTING FLOOR CONSTRUCTION (INCLUDING BEAMS): 1 HR

MEANS OF EGRESS

R:XXX
P:XXX

EXIT

EXIT ACCESS

REQUIRED PERSON LOAD IN EGRESS PATH

OTHER

FIRE EXTINGUISHER CABINET

FIRE EXTINGUISHER

EXISTING CONSTRUCTION

NEW CONSTRUCTION

BUILDING CODE DATA

1. APPLICABLE CODES INCLUDING, BUT NOT LIMITED TO:

BUILDING CODE: IBC 2009
LIFE SAFETY CODE: NFPA 101, 2009
PLUMBING CODE: UNIFORM PLUMBING CODE 2009
ASHRAE 92.2 2007
ELECTRICAL CODE: NFPA 70, NEC 2014
ENERGY CODE: IEC 2009
ME BARRIER FREE CODE
ME CODE AMENDMENTS
ME ACCESSIBILITY CODE 2010, ADAAG

2. EXISTING BUILDING IS FULLY SPRINKLED.

OCCUPANCY GROUP B: COLLEGE/UNIVERSITY INSTRUCTIONAL BUILDING

4. CONSTRUCTION CLASSIFICATION:

EXISTING BUILDING: BOCA 1999 CONSTRUCTION TYPE IIB, NFPA TYPE: II (111)

5. BUILDING HEIGHT:

EXISTING BUILDING: 65 FT, 5 STORIES

6. BUILDING AREA:

PARTIAL THIRD FLOOR PROJECT AREA:
1,630 SF

7. OCCUPANT LOADS:

SEE OCCUPANT LOAD TABLE FOR ROOM OCCUPANT LOADS.

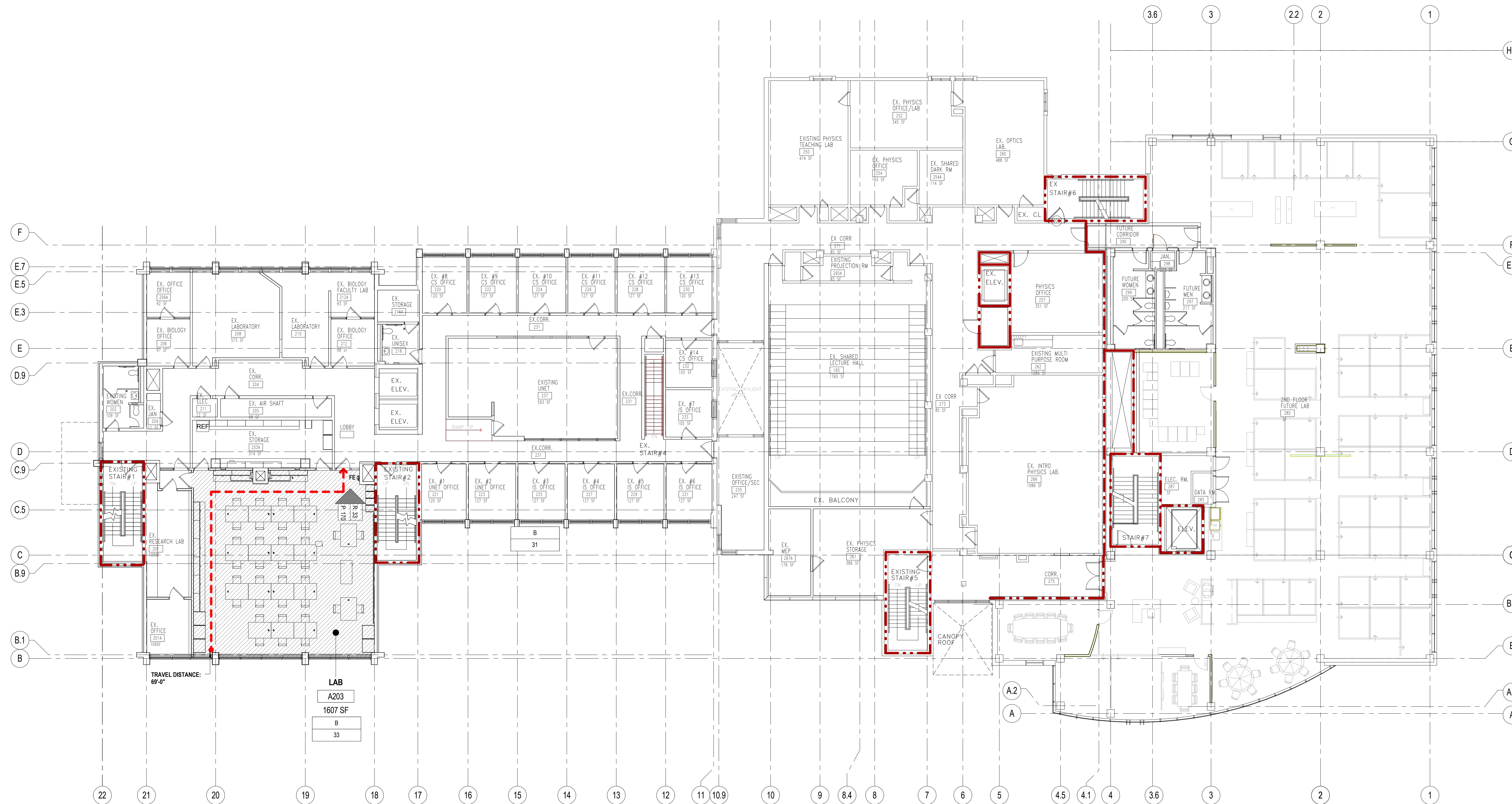
8. SEE DOOR SCHEDULE FOR DOOR ASSEMBLY FIRE-RATINGS.

9. EXIT SIGNS AND EMERGENCY LIGHTING:

SEE LIFE SAFETY PLAN FOR LOCATIONS.

10. HAZARDOUS MATERIALS:

PER INFORMATION PROVIDED BY USM, AMOUNTS OF HAZARDOUS MATERIALS STORED PER EXISTING CONTROL AREAS SHALL NOT EXCEED ALLOWABLE AMOUNTS PER IBC AND NFPA AS APPLICABLE.



University of Southern Maine

**Science Building
Lab A203 Renovation**

70 Falmouth Street
Portland, ME 04104

NO.	DESCRIPTION	DATE
	ISSUED FOR PERMIT	03/17/2016

FOR ADDITIONAL INFORMATION, REFER TO PROJECT MANUAL.

CONTENT:
CODE ANALYSIS TEXT, SYMBOLS AND RATINGS

DRAWN BY: MTM

PROJECT NO: 16-005-00

DATE: 3/17/2016

REVISED:

SCALE: As indicated

A0.2

Project Phase
BID DOCUMENTS

COPYRIGHT © 2016 BY LAVALLEE/BRENSINGER PROFESSIONAL ASSOCIATION. ALL RIGHTS RESERVED.
NO REPRODUCTION WITHOUT PERMISSION.