

HARRIMAN

AUBURN PORTLAND MANCHESTER

UNIVERSITY OF SOUTHERN MAINE DEPARTMENT REORGANIZATION PROJECT 2015-011

Portland, Maine

Harriman Project No. 15457

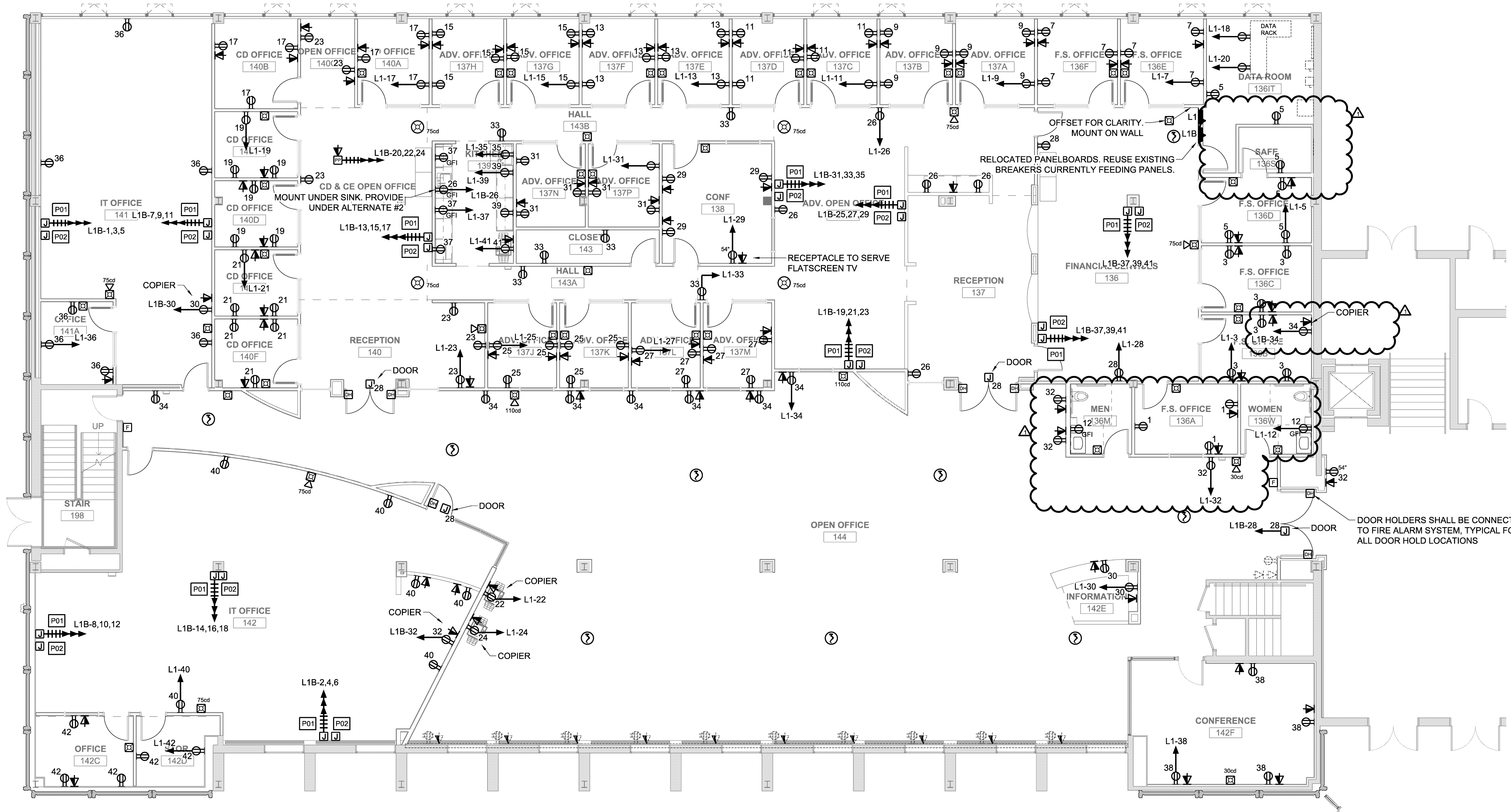
Key Plan



KEY NOTES:

P01... POWER-PROVIDE BLANK FACEPLATE, DRILL/MODIFY AS REQUIRED TO RECEIVE MODULAR FURNITURE POWER WHIP. MAKE ALL FINAL CONNECTIONS.

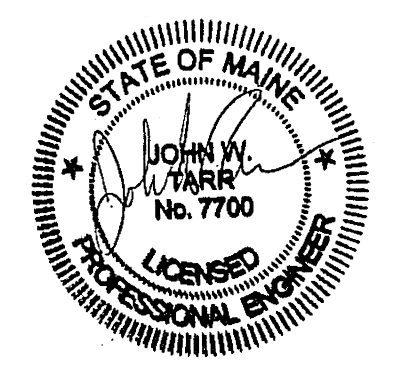
P02... DATA-PROVIDE WALL BOX WITH DOUBLE GANG MUD RING WITH BLANK FACEPLATE, DRILL FACEPLATE AND PROVIDE GROMMET AS REQUIRED FOR OWNER'S DATA/VOICE CABLING. COORDINATE WITH OWNER'S VENDOR.



L1												
VOLTAGE: 120/208			MAIN BREAKER: 200A MAIN BRKR			LOCATION: FINANCIAL SERV 136						
PH & WIRES: 3P 4W			AIC RATING: 22K AIC			FEEDER: 4#4/0#4G-2 1/2" C						
BUSES: 200			MOUNTING: FLUSH									
LOAD DESCRIPTION	AMP	POLE	DWG CRKT NO.	WATTS	WATT LOADS			WATTS	POLE	DWG CRKT NO.	AMP	
					PH A	PH B	PH C					
TUB 1 OF 1 - REMARKS:												
RCPTS 136S+136A	20	1	1	600	2215			1615	2	2	1	20
RCPTS 136B+136C	20	1	3	1200		3104		1904	4	4	1	20
RCPTS 136D+136G	20	1	5	1200			2702	1502	6	6	1	20
RCPTS 136E+136F	20	1	7	1200	3043			1843	8	8	1	20
RCPTS 137A+137B	20	1	9	1200		3085		1895	10	10	1	20
RCPTS 137C+137D	20	1	11	1200			1600	400	12	12	1	20
RCPTS 137E+137F	20	1	13	1200	1200			0	14	14	1	20
RCPTS 137G+137H	20	1	15	1200		1200		0	16	16	1	20
RCPTS 140A+140B	20	1	17	1200			1200	0	18	18	1	20
RCPTS 140C+140D	20	1	19	1200	1200			0	20	20	1	20
RCPTS 140E+140F	20	1	21	1200		2200		1000	22	22	1	20
RCPTS 140+140G	20	1	23	1000			2000	1000	24	24	1	20
RCPTS 137J+137K	20	1	25	1200	2200			1000	26	26	1	20
RCPTS 137L+137M	20	1	27	1200		1800		600	28	28	1	20
RCPTS 138	20	1	29	800			1400	600	30	30	1	20
RCPTS 137N+137P	20	1	31	1200	1800			800	32	32	1	20
RCPTS 141,141A+141B	20	1	33	1200		2400		1200	34	34	1	20
RCPT KITCHEN 139 REFRIG	20	1	35	800			2200	1400	36	36	1	20
RCPTS KITCHEN 139	20	1	37	600	1400			800	38	38	1	20
RCPTS KITCHEN 139	20	1	39	400		1600		1200	40	40	1	20
RCPTS KITCHEN 139 COPIER	20	1	41	1000			2000	1000	42	42	1	20
TOTAL AMPS: 115.4					13058	15389	13102	TOTAL WATTS: 41549				
REMARKS:												

L1B													
VOLTAGE: 120/208			MAIN BREAKER: 200A MAIN BRKR			LOCATION: FINANCIAL SERV 136							
PH & WIRES: 3P 4W			AIC RATING: 22K AIC			FEEDER: 4#4/0#4G-2 1/2" C							
BUSES: 200			MOUNTING: FLUSH										
LOAD DESCRIPTION	AMP	POLE	DWG CRKT NO.	WATTS	WATT LOADS			WATTS	POLE	DWG CRKT NO.	AMP		
					PH A	PH B	PH C						
TUB 1 OF 1 - REMARKS:													
SYSTEMS FURNITURE	20	3	1	1	2400	1600			2400	2	2	3	20
	-	-	-	3		1800			4	-	-	-	
	-	-	-	5				1600	6	-	-	-	
SYSTEMS FURNITURE	20	3	7	7	2400	1600			2400	8	8	3	20
	-	-	-	9		1800			10	-	-	-	
	-	-	-	11				1600	12	-	-	-	
SYSTEMS FURNITURE	20	3	13	13	2400	1600			2400	14	14	3	20
	-	-	-	15		1800			16	-	-	-	
	-	-	-	17				1600	18	-	-	-	
SYSTEMS FURNITURE	20	3	19	19	2400	1600			2400	20	20	3	20
	-	-	-	21		1800			22	-	-	-	
	-	-	-	23				1600	24	-	-	-	
SYSTEMS FURNITURE	20	3	25	25	2400	1200			400	26	26	1	20
	-	-	-	27		1800			800	28	28	1	20
	-	-	-	29				1600	800	30	30	1	20
SYSTEMS FURNITURE	20	3	31	31	2400	1600			800	32	32	1	20
	-	-	-	33		1800			800	34	34	1	20
	-	-	-	35				800	0	36	36	1	20
SYSTEMS FURNITURE	20	3	37	37	2400	800			0	38	38	1	20
	-	-	-	39		800			0	40	40	1	20
	-	-	-	41				800	0	42	42	1	20
TOTAL AMPS: 83.3					10000	10400	9600	TOTAL WATTS: 30000					
REMARKS:													

Issues and Revisions		
Mark	Date	Description
--	07-09-15	75% REVIEW
--	07-23-15	100% REVIEW
--	08-03-15	OWNER REVIEW
--	08-10-15	ISSUED FOR BID
1	09-25-15	ISSUED FOR PERMIT



Drawing Scales: 1/8" = 1'-0"

PA / PE: JWT © 2015
Drawn By: BSO Harriman Associates

LUTHER BONNEY FIRST FLOOR POWER AND SYSTEMS

E20.1