

HARRIMAN

AUBURN PORTLAND MANCHESTER

UNIVERSITY OF SOUTHERN MAINE DEPARTMENT REORGANIZATION PROJECT 2015-011 PORTLAND, MAINE

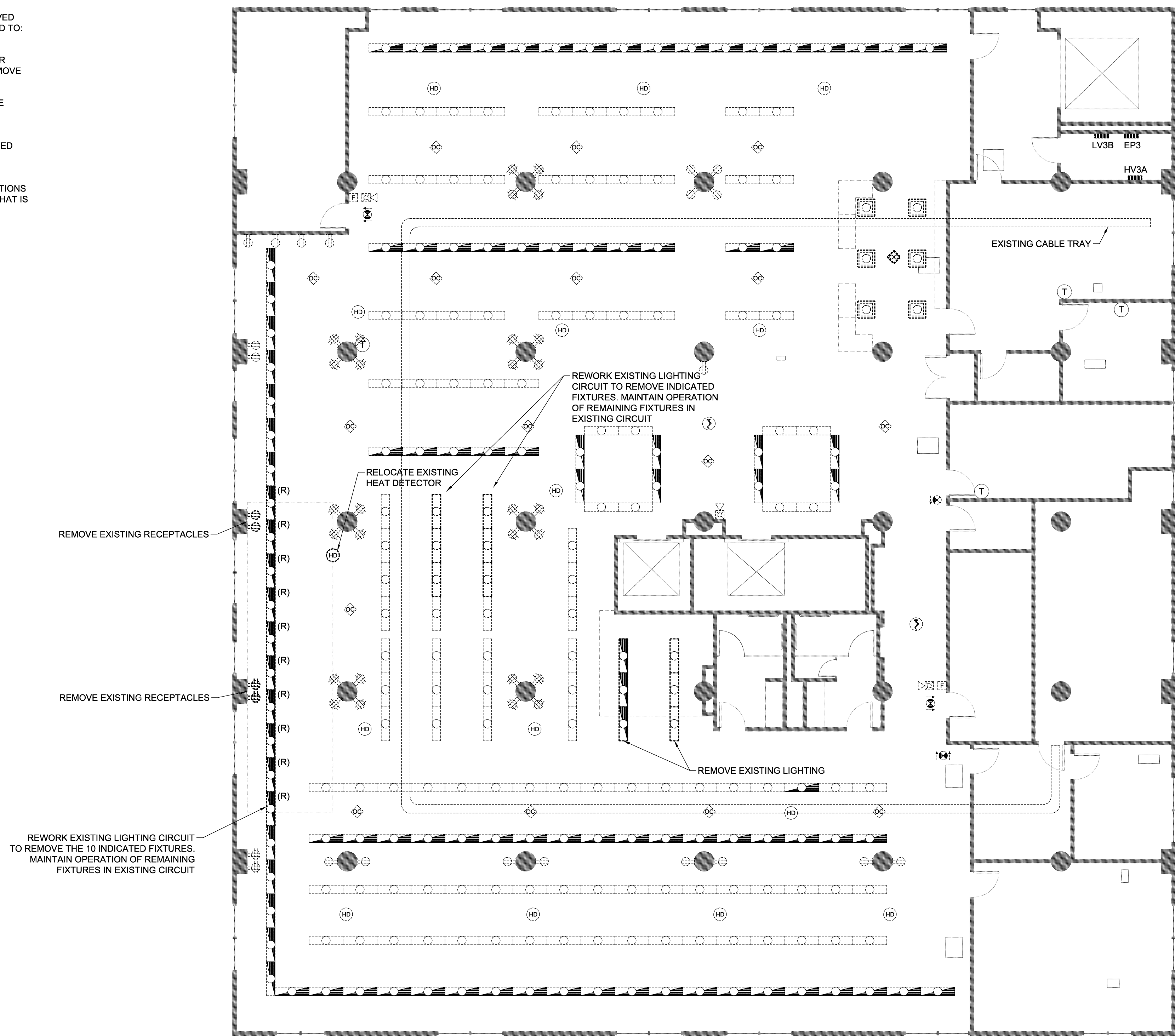
Harriman Project No. 15457

Key Plan Prog North

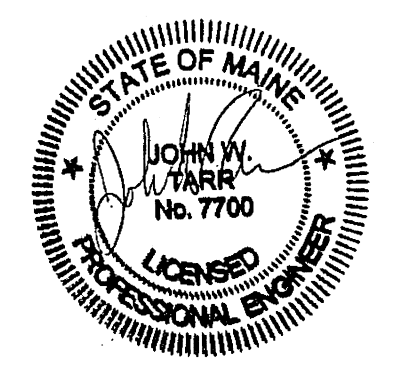


DEMOLITION NOTES:

- 1. ELECTRICAL INDICATED IS AS GENERALLY FOUND (JUNE 2015). THE INTENT OF THE EXISTING CONDITIONS PLAN(S) IS TO DOCUMENT EXISTING CONDITIONS. HOWEVER, ALL ELECTRICAL DEVICES MAY NOT NECESSARILY BE INDICATED ON THE DRAWINGS. FIELD VERIFY AND ADJUST WORK TO SUIT ALL FOUND.
2. REFER TO NON-DEMO PLANS TO DETERMINE EXTENT OF WORK IN EACH AREA, INCLUDING WHETHER DEVICES ARE TO REMAIN, BE REMOVED, REPLACED, ETC... EXCEPT AS NOTED, GENERALLY THE INTENT IS THAT IF EXISTING DEVICES ARE SHOWN ON THE EXISTING CONDITIONS PLANS AND NEW DEVICES ARE SHOWN ON THE NON-DEMO PLANS THEN EXISTING DEVICES ARE TO BE REMOVED. IF EXISTING DEVICES ARE SHOWN ON BOTH THEN DEVICES ARE TO REMAIN.
3. ALL EXISTING ITEMS INTENDED FOR REMOVAL SHALL BE REMOVED WITH ALL ASSOCIATED HARDWARE INCLUDING, BUT NOT LIMITED TO: CONDUIT, BOXES, WIRING, CABLES, HANGERS, ETC...
4. COORDINATE WITH MECHANICAL AND PLUMBING DRAWINGS FOR MECHANICAL AND PLUMBING EQUIPMENT TO BE REMOVED. REMOVE ALL ASSOCIATED CONDUIT, BOXES, WIRING, ETC...
5. CONDUIT IN GOOD CONDITION AND PROPERLY LOCATED MAY BE REUSED WHERE APPLICABLE, UNLESS NOTED OTHERWISE.
6. IN AREAS NOT RENOVATED BY THIS CONTRACT VERIFY THAT ELECTRICAL POWER, LIGHTING AND SYSTEMS ARE NOT AFFECTED BY THE ALTERATIONS. PROVIDE ALL WORK AS REQUIRED TO MAINTAIN POWER AND PROPER OPERATION OF SYSTEMS.
7. PROVIDE WORK REQUIRED TO MAINTAIN EXISTING COMMUNICATIONS CABLING SERVING PORTIONS OF THIS BUILDING AND CAMPUS THAT IS NOT PART OF THIS RENOVATION OR PHASE OF WORK.



Issues and Revisions table with columns: Mark, Date, Description. Includes entries for 75% REVIEW, 100% REVIEW, OWNER REVIEW, ISSUED FOR BID, and ISSUED FOR PERMIT.



Drawing Scales 1/8" = 1'-0" and a graphical scale bar showing 0, 4, 8, 12 feet.

PA / PE: JWT © 2015
Drawn By: BSO Harriman Associates

GLICKMAN THIRD FLOOR EXISTING CONDITIONS

E05.2