



HARRIMAN

AUBURN PORTLAND MANCHESTER

UNIVERSITY OF SOUTHERN MAINE DEPARTMENT REORGANIZATION PROJECT 2015-011

PORTLAND, MAINE

Harriman Project No. 15457

Key Plan

Proj North



True North

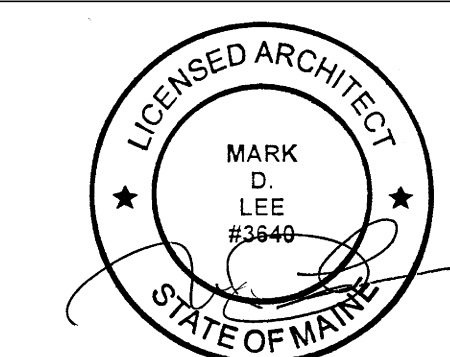


LEGEND

- SMOKE DETECTOR
- EMERGENCY LIGHTING
- EXIT SIGNS
- HORN STROBE
- STROBE
- PULL STATION
- FIRE EXTINGUISHER CAB
- OCCUPANT COUNT

Issues and Revisions

Mark	Date	Description
1	09-25-15	ISSUED FOR PERMIT



Drawing Scales	As indicated
PA / PE	MDL
Drawn By	ERP
	© 2015 Harriman Associates

LUTHER BONNEY - LIFE SAFETY PLAN

A01.1L

CODE COMPLIANCE

BUILDING DESIGN CODES:

- AMERICANS WITH DISABILITIES ACT (ADA)
- NFPA 101 LIFE SAFETY CODE / 2009
- INTERNATIONAL BUILDING CODE / 2009
- INTERNATIONAL MECHANICAL CODE / 2009
- ASHRAE / IES STANDARD 90.1 - 2004
- NFPA 70 NATIONAL ELECTRIC CODE / 2008

OCCUPANCY CLASSIFICATION:

- NFPA BUSINESS
- IBC BUSINESS

CONSTRUCTION TYPE:

- NFPA - TYPE II (000)
- IBC - TYPE II-B

NUMBER OF STORIES:

- BASEMENT: 5,656
- FIRST: 26,017
- SECOND: 24,862
- THIRD: 10,953
- FOURTH: 8,138
- FIFTH: 8,126
- TOTAL: 82,892

BUILDING HEIGHT:

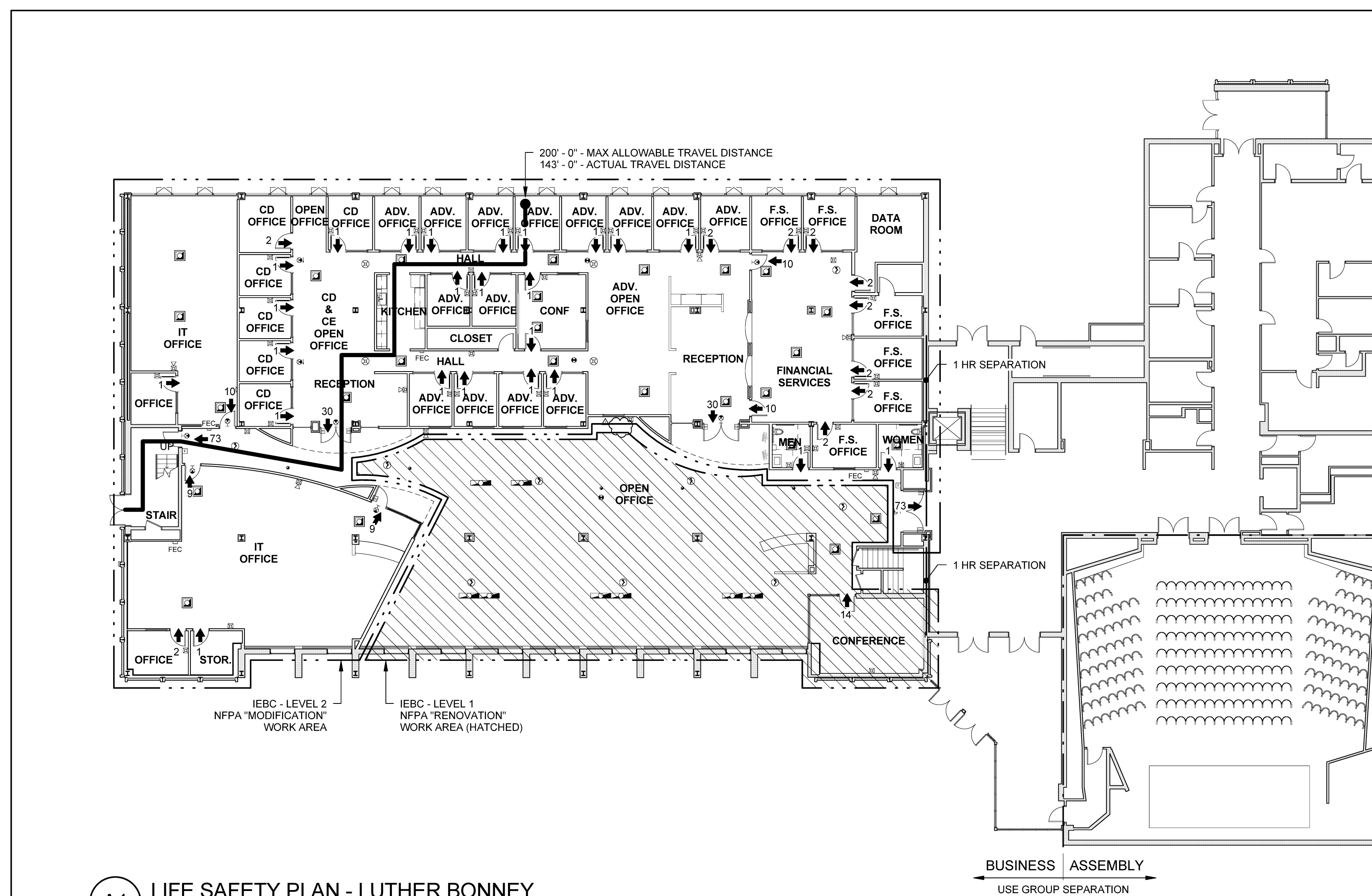
- ALLOWABLE: 75'
- ACTUAL: 56 10 1/2'

OCCUPANT LOADS:

- OFFICE: 100 SF GROSS
- MECHANICAL: 300 SF GROSS
- STORAGE: 300 SF GROSS

MEANS OF EGRESS:

- MAX TRAVEL DISTANCE: 200'
- DEAD END CORRIDOR: 35' IBC, 20' NFPA
- COMMON PATH OF TRAVEL: 75' MAX
- MIN CORRIDOR WIDTH: 44"
- EXIT CAPACITY: 0.3' / occupant (STAIRWAYS), 0.2' / occupant (OTHER EGRESS)



A1 LIFE SAFETY PLAN - LUTHER BONNEY SCALE: 1/16" = 1'-0"