

HARRIMAN

AUBURN PORTLAND MANCHESTER

UNIVERSITY OF SOUTHERN MAINE DEPARTMENT REORGANIZATION PROJECT 2015-011

PORTLAND, MAINE

Harriman Project No. 15457

Key Plan

Proj North



True North

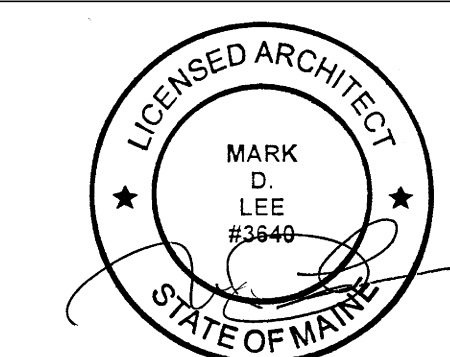


LEGEND

- SMOKE DETECTOR
- EMERGENCY LIGHTING
- EXIT SIGNS
- HORN STROBE
- STROBE
- PULL STATION
- FIRE EXTINGUISHER CAB
- OCCUPANT COUNT

Issues and Revisions

Mark	Date	Description
1	09-25-15	ISSUED FOR PERMIT



Drawing Scales	
As indicated	
PA / PE: MDL	© 2015 Harriman Associates
Drawn By: ERP	

GLICKMAN LIBRARY - LIFE SAFETY PLAN

A01.1G

CODE COMPLIANCE

BUILDING DESIGN CODES:

- AMERICANS WITH DISABILITIES ACT (ADA)
- NFPA 101 LIFE SAFETY CODE / 2009
- INTERNATIONAL BUILDING CODE / 2009
- INTERNATIONAL MECHANICAL CODE / 2009
- ASHRAE / IES STANDARD 90.1 - 2004
- NFPA 70 NATIONAL ELECTRIC CODE / 2008

OCCUPANCY CLASSIFICATION:

- NFPA EXISTING ASSEMBLY (CHAPTER 13)
- IBC ASSEMBLY A-3 (LIBRARY)

CONSTRUCTION TYPE:

- NFPA - TYPE I (000)
- IBC: TYPE I-B

FIRE SUPPRESSION:

- FULLY SPRINKLERED W/ SUPERVISED SYSTEM

NUMBER OF STORIES:

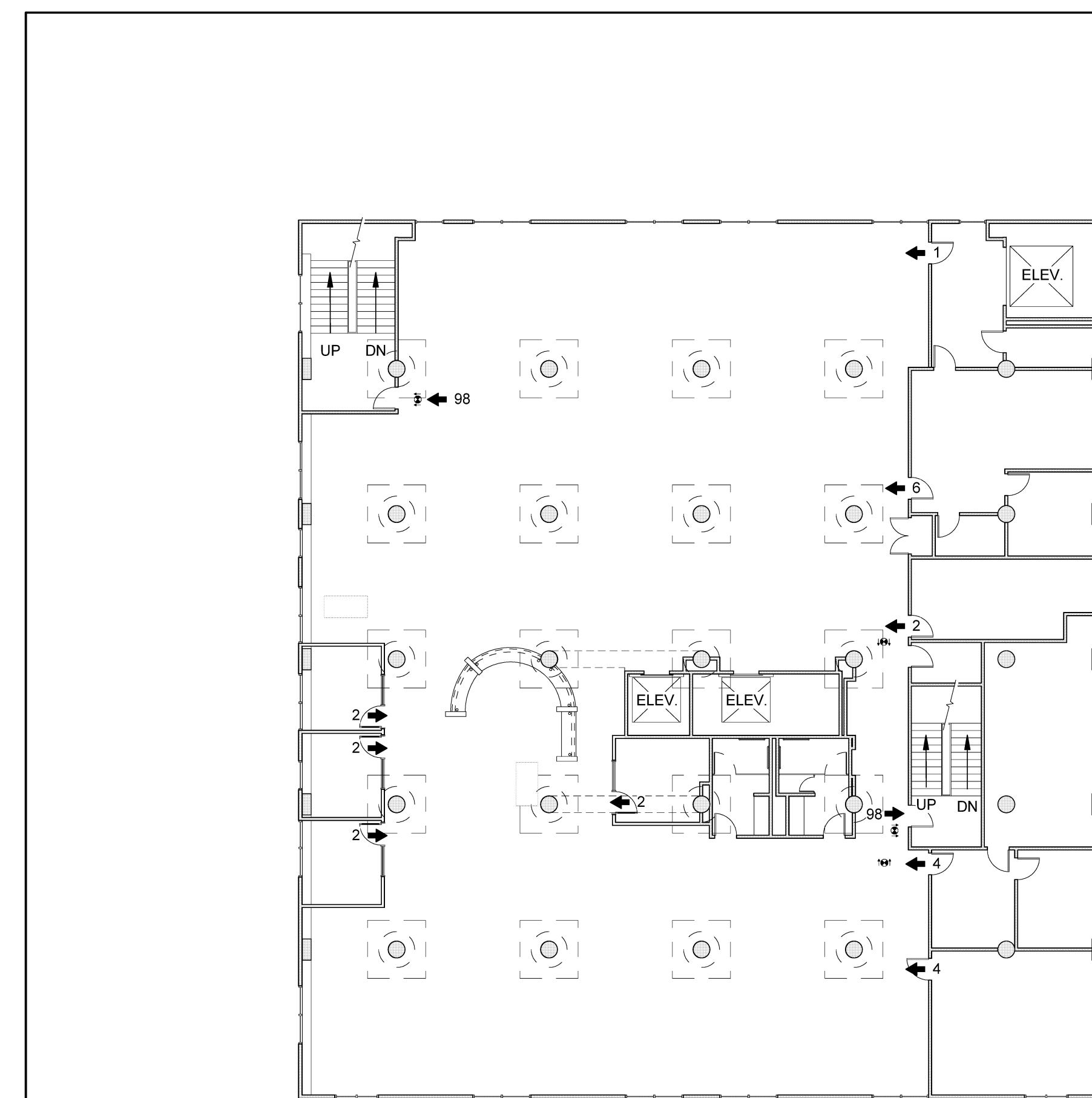
BASEMENT:	13,500
FIRST:	21,650
SECOND:	18,550
THIRD:	18,800
FOURTH:	13,500
FIFTH:	13,500
SIXTH:	13,500
SEVENTH:	13,500
TOTAL:	126,500

OCCUPANT LOADS:

OFFICE:	100 SF GROSS
MECHANICAL:	300 SF GROSS
LIBRARY STACKS:	100 SF GROSS
LIBRARY READING:	50 SF GROSS

MEANS OF EGRESS:

MAX TRAVEL DISTANCE:	300'
DEAD END CORRIDOR:	50' IEBC 50' NFPA
COMMON PATH OF TRAVEL:	75' MAX
MIN CORRIDOR WIDTH:	44"
EXIT CAPACITY:	
STAIRWAYS	0.3" / occupant
OTHER EGRESS	0.2" / occupant



A1 LIFE SAFETY PLAN - GLICKMAN SCALE: 1/16" = 1'-0"