

- GENERAL NOTES**
- INTERIOR PARTITION DIMENSIONS ARE TO FACE OF FINISH OF PARTITION UNLESS OTHERWISE SHOWN/NOTED
 - NEW INTERIOR FURRED PARTITIONS ARE TYPE 170N UNLESS OTHERWISE NOTED.
 - FULL HEIGHT PARTITIONS SHALL BE FRAMED AROUND MECHANICAL DUCTWORK. FILL GAPS AROUND DUCTWORK WITH SOUND ATTENUATING BATT (SAB) INSULATION.
 - NEW UTILITIES SHALL BE CONCEALED ABOVE CEILINGS OR IN NEW PARTITIONS TO THE GREATEST EXTENT POSSIBLE. INSTALLATIONS SHALL BE AS NEAT/DIRECT AS POSSIBLE IN REQUIRED CONDUITS, ETC. PER MPE DRAWINGS.
 - SURVEY AND REMOVE ALL ABANDONED UTILITIES. REMOVE PIPING, DEVICES, WIRING & CONDUITS, REMOVE RELATED SUPPORTS. *COMPONENTS BUILT-IN TO MASONRY SHALL REMAIN & RECEIVE COVER PLATES. SEE ELECTRICAL.
 - FIRESTOP ALL PENETRATIONS THROUGH RATED CONSTRUCTION, NEW AND EXISTING.
 - REPAIR FIRE RATED ASSEMBLIES TO ENSURE CONTINUOUS PROTECTION, WHERE DAMAGED OR AFFECTED BY THIS WORK.
 - ALL EXISTING INTERIOR PARTITIONS SHALL BE INFILLED AT TOP OF WALL AND AT ALL PENETRATIONS TO ENSURE SOUND PROOFING. PROVIDE WALL BLOCKING IN STUD FRAMED PARTITIONS TO SUPPORT INSTALLATION OF NEW EQUIPMENT.
 - ALL FIRE-RATED PARTITIONS SHALL BE STENCILED ON THE WALL SURFACE JUST ABOVE THE CEILING LINE INDICATING THE PARTITIONS FIRE-RATING: "1-HR", "2-HR", ETC IN RED OR ORANGE PAINT ON EACH SIDE OF THE PARTITION. SMOKE PARTITIONS "SMOKE" IN GREEN PAINT.
- PARTITION TAG KEY**
- 1-4 INDICATES TOTAL NUMBER OF GPDW LAYERS
- 5-9 INDICATES SPECIAL PARTITION TYPE
- SIZE OF STEEL STUD
- 0 = 7/8"
 - 1 = 1 5/8"
 - 2 = 2 1/2"
 - 3 = 3 5/8"
 - 6 = 6"
 - 8 = 8"
- INDICATES PARTITION HAS BATT INSULATION
- A = SOUND ATTENUATING BATTS
 - N = NO INSULATION
- TYPE OF GYPSUM DRWALL
- 1 = GPDW FULL HEIGHT ES
 - 2 = ABUSE RESISTANT GPDW FULL HEIGHT ES
 - 3 = IMPACT RESISTANT GPDW FULL HEIGHT ES
 - 4 = FIRE RATED GPDW FULL HEIGHT ES
 - 5 = GPDW VARYING HEIGHT ES
- PARTITION TAG KEY GENERAL NOTES**
- NOT ALL PARTITION TAGS SHOWN ARE USED ON THIS PROJECT. VERIFICATION OF PARTITIONS TAGS USED MUST BE MADE FROM THE FLOOR PLANS THEN REFERENCED HERE FOR EXACT MATERIALS USED.
- PARTITION LEGEND**
- STUD OR CMU SIZE
- (2) 3-5/8" STEEL STUDS W/ SAB
- 1 HR FIRE RATED
- UL DESIGN NO. WHERE APPLICABLE
- PARTITION OR WALL TAG NO.



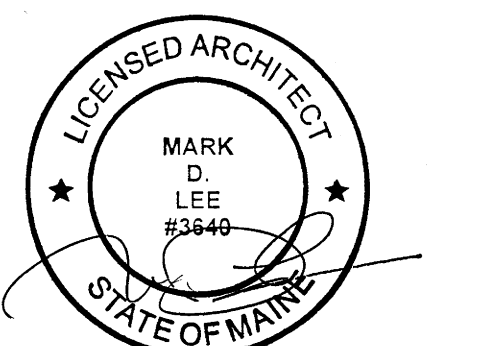
UNIVERSITY OF SOUTHERN MAINE DEPARTMENT REORGANIZATION PROJECT 2015-011
PORTLAND, MAINE

Harriman Project No.	15457
Key Plan	Proj North
	True North

- SYMBOLS LEGEND**
- 216 PARTITION TAG SEE A10.1 FOR PARTITION TAG KEY & PARTITION DEFINITION DETAILS
- ROOM NAME**
- 101 ROOM NAME AND NUMBER
 - 201 DOOR NUMBERS SEE A60.1 FOR SCHEDULE
 - BL01 BORROWED LITE NUMBERS SEE A60.1 FOR SCHEDULE
 - D001 DEMO TAG SEE THIS SHEET FOR SCHEDULE
 - FEC FIRE EXTINGUISHER CABINET
 - MBx MARKER BOARD

Issues and Revisions

Mark	Date	Description
-	07-09-15	75% REVIEW
-	07-23-15	100% REVIEW
-	08-03-15	OWNER REVIEW
-	08-10-15	ISSUED FOR BID



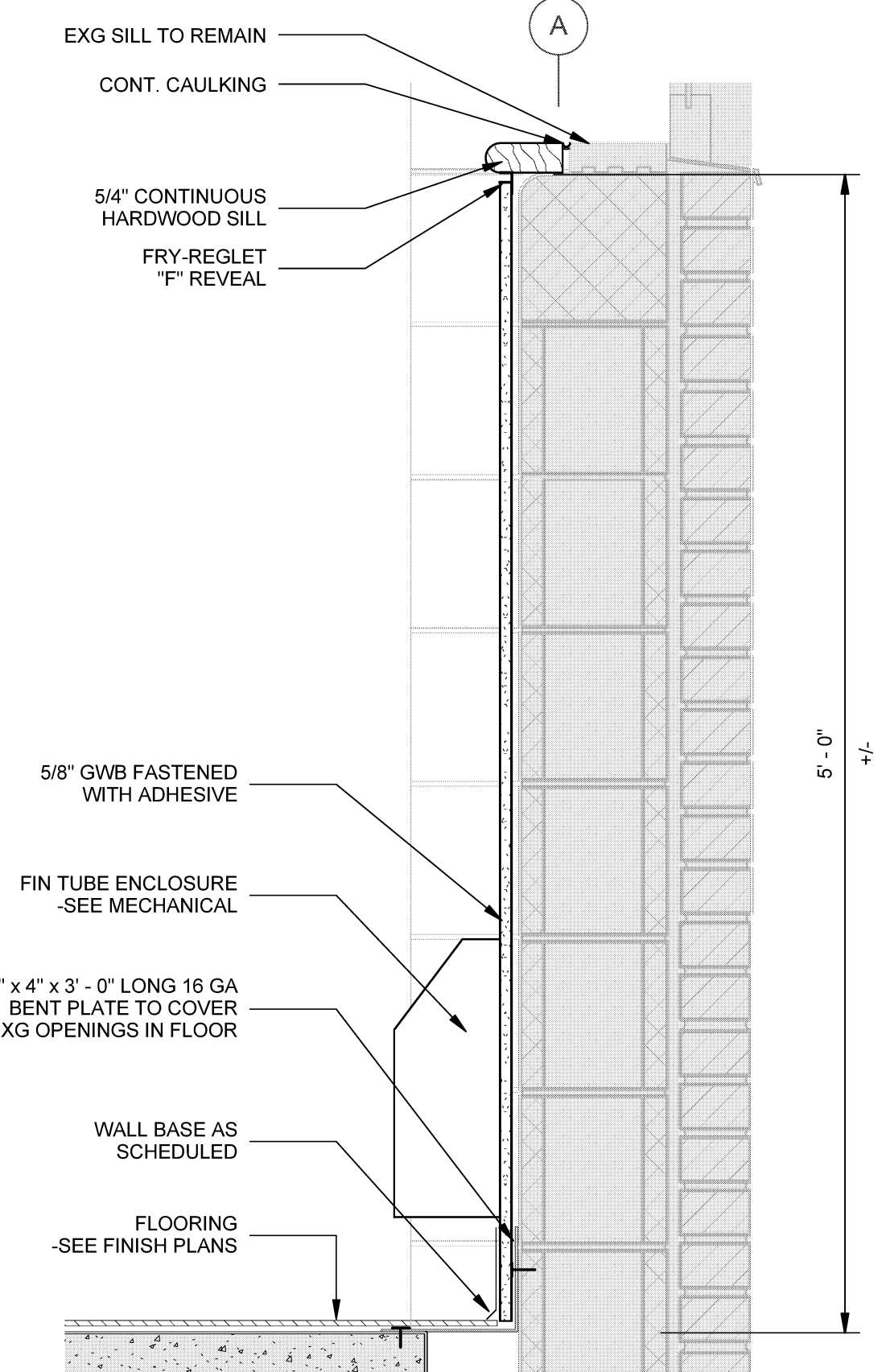
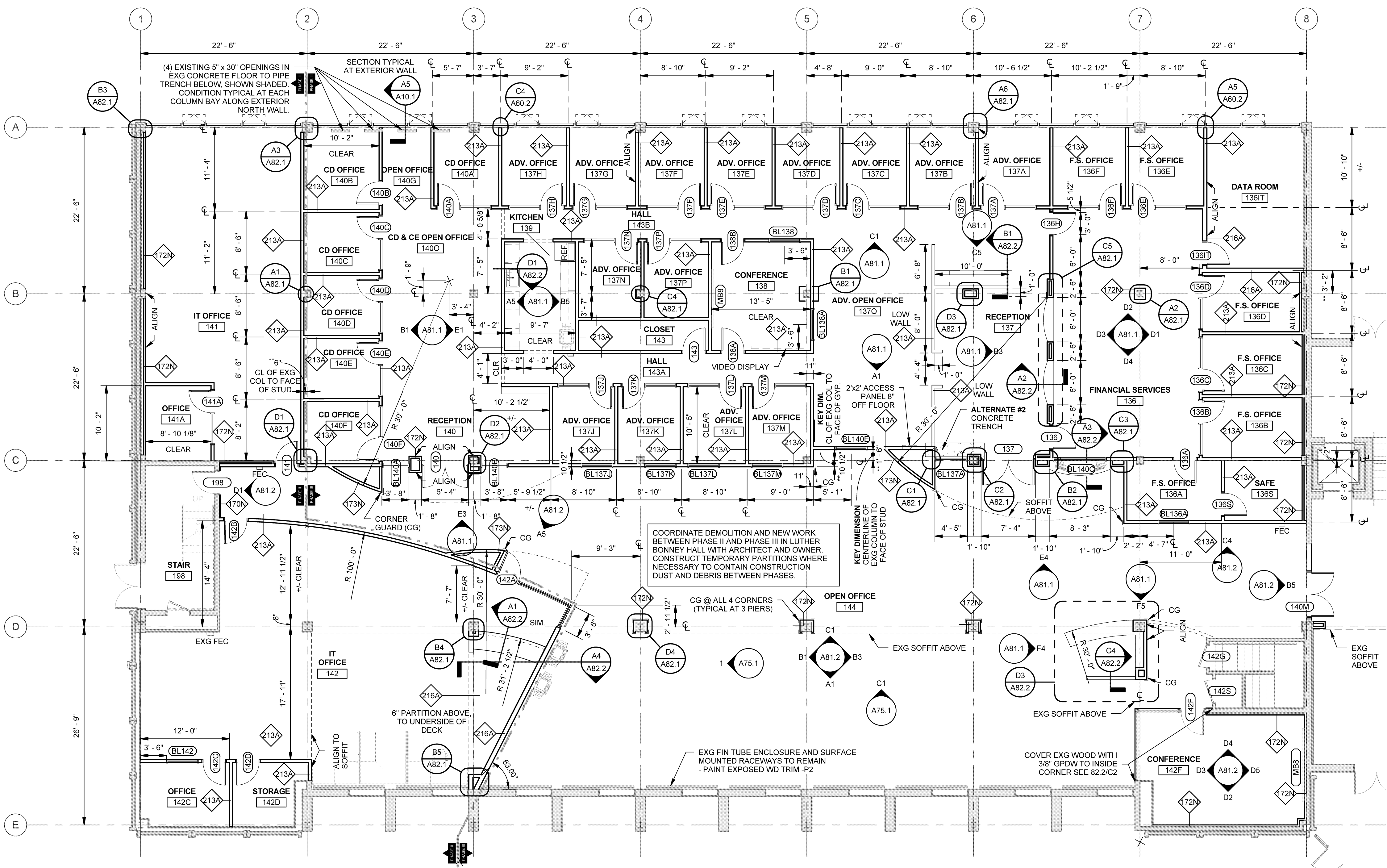
Drawing Scales

As indicated

PA/PE: MDL © 2015 Harriman Associates
Drawn By: ERP

FIRST FLOOR PLAN - LUTHER BONNEY

A10.1



A1 FIRST FLOOR PLAN - LUTHER BONNEY
SCALE: 1/8" = 1'-0"

A5 WALL SECTION AT FIN TUBE
SCALE: 1 1/2" = 1'-0"

Plot Date: 8/11/2015 3:52:40 PM