

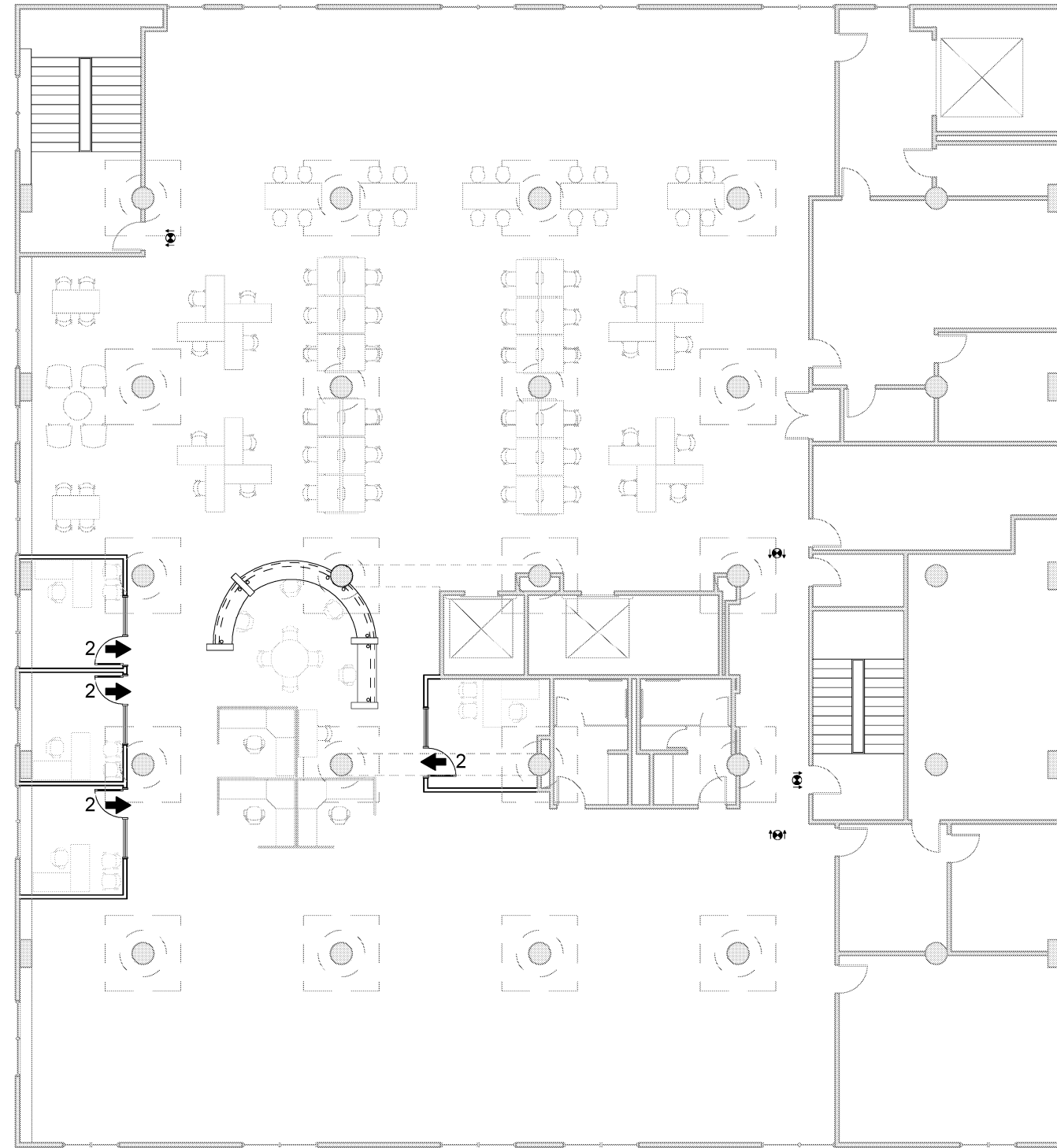
BUILDING DESIGN CODES:
 AMERICANS WITH DISABILITIES ACT (ADA)
 NFPA 101 LIFE SAFETY CODE / 2009
 INTERNATIONAL BUILDING CODE / 2009
 INTERNATIONAL MECHANICAL CODE / 2009
 ASHRAE / IES STANDARD 90.1 - 2004
 NFPA 70 NATIONAL ELECTRIC CODE / 2008

OCCUPANCY CLASSIFICATION:
 NFPA
 EXISTING ASSEMBLY (CHAPTER 13)
 IBC
 ASSEMBLY A-3 (LIBRARY)

CONSTRUCTION TYPE:
 NFPA : TYPE I (000)
 IBC : TYPE II-B

NUMBER OF STORIES:

BASEMENT:	13,500
FIRST:	21,650
SECOND:	18,550
THIRD:	18,800
FOURTH:	13,500
FIFTH:	13,500
SIXTH:	13,500
SEVENTH:	13,500
TOTAL:	126,500



B1 LIFE SAFETY PLAN - GLICKMAN
 SCALE: 1/16" = 1'-0"

BUILDING DESIGN CODES:
 AMERICANS WITH DISABILITIES ACT (ADA)
 NFPA 101 LIFE SAFETY CODE / 2009
 INTERNATIONAL BUILDING CODE / 2009
 INTERNATIONAL MECHANICAL CODE / 2009
 ASHRAE / IES STANDARD 90.1 - 2004
 NFPA 70 NATIONAL ELECTRIC CODE / 2008

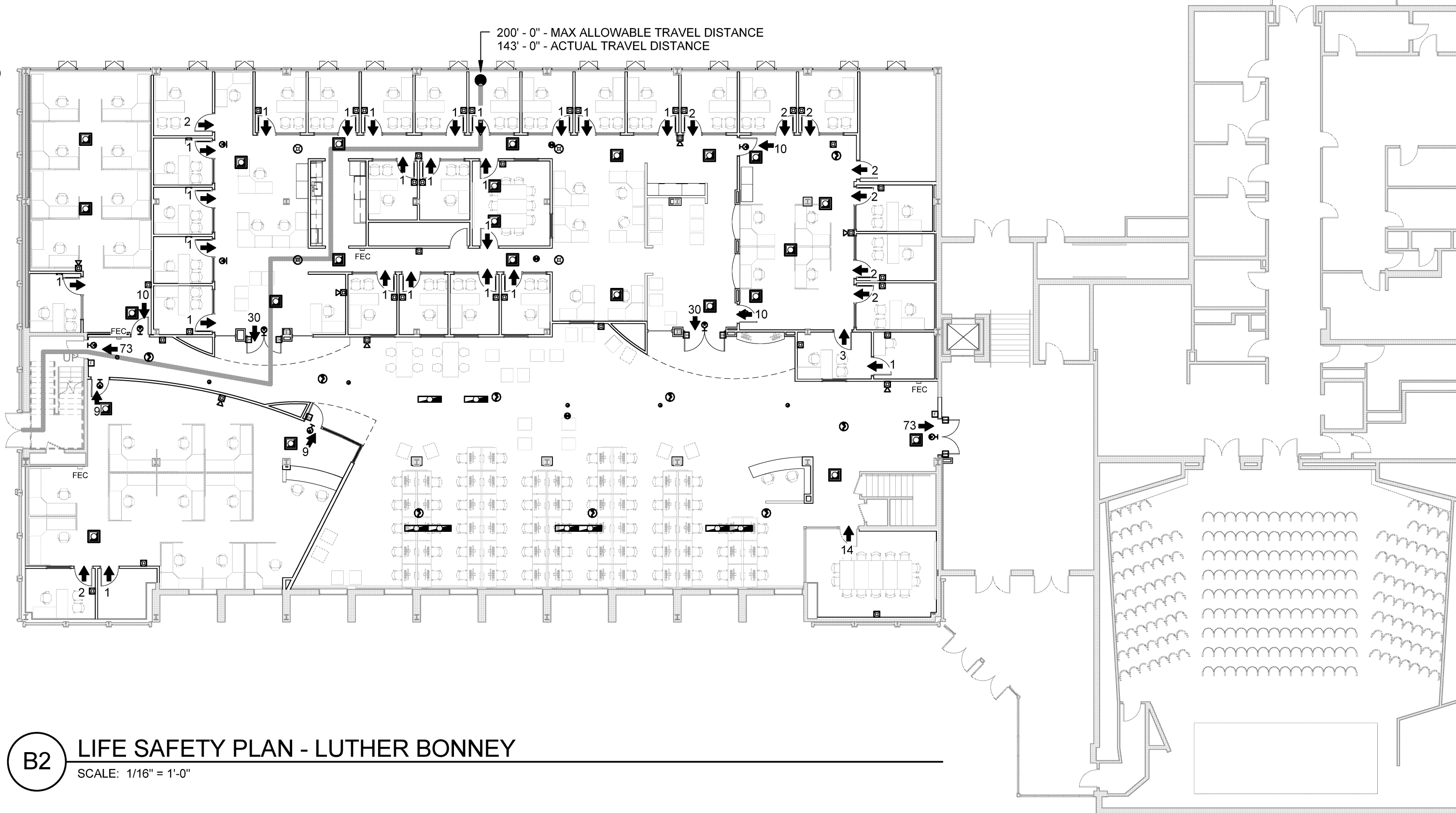
OCCUPANCY CLASSIFICATION:
 NFPA
 BUSINESS
 IBC
 BUSINESS

CONSTRUCTION TYPE:
 NFPA : TYPE II (000)
 IBC : TYPE II-B

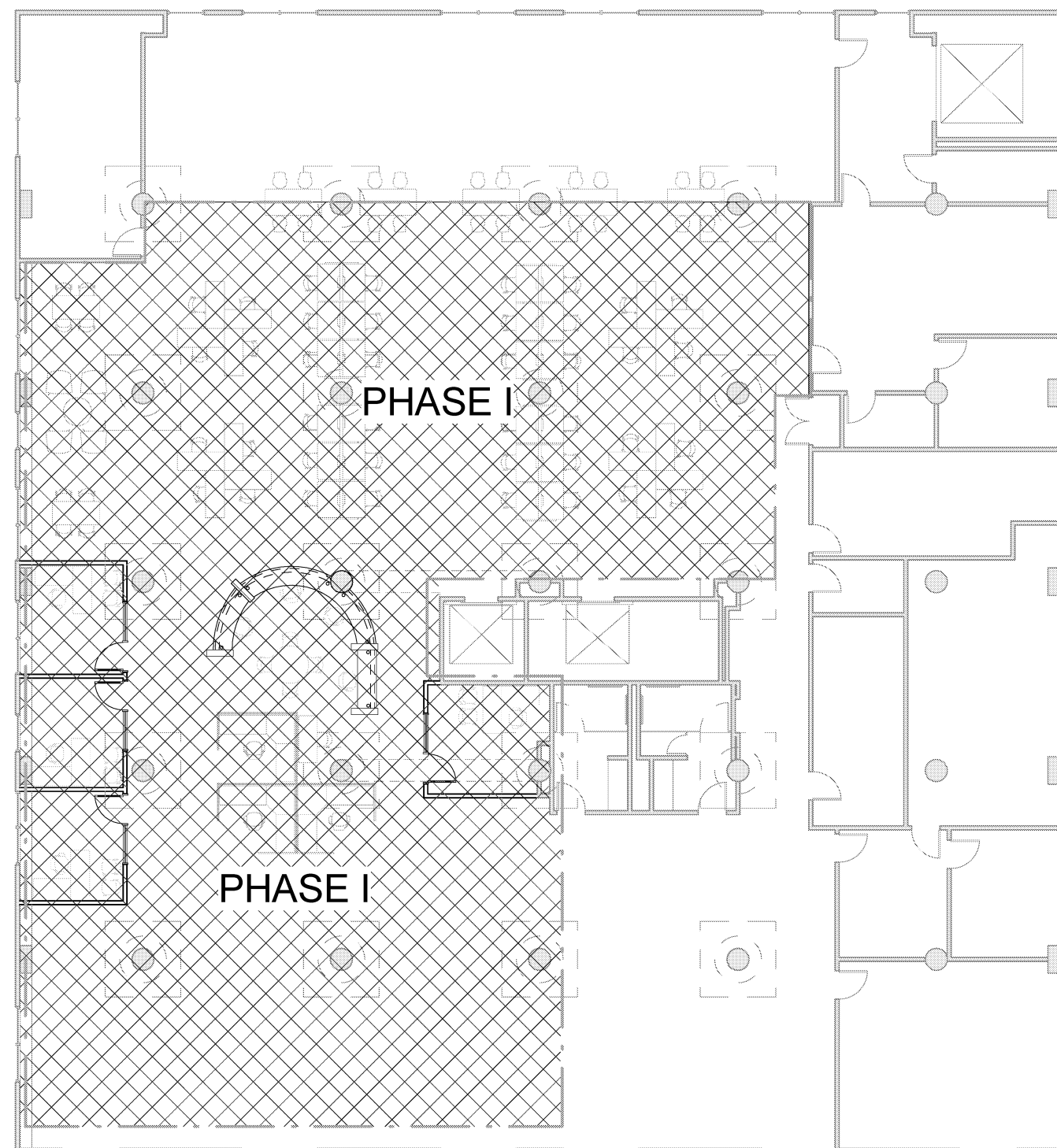
NUMBER OF STORIES:

BASEMENT:	5,656
FIRST:	26,017
SECOND:	24,882
THIRD:	10,093
FOURTH:	8,138
FIFTH:	8,126
TOTAL:	82,892

- SMOKE DETECTOR
- EMERGENCY LIGHTING
- EXIT SIGNS
- HORN STROBE
- STROBE
- PULL STATION
- FIRE EXTINGUISHER CAB
- OCCUPANY



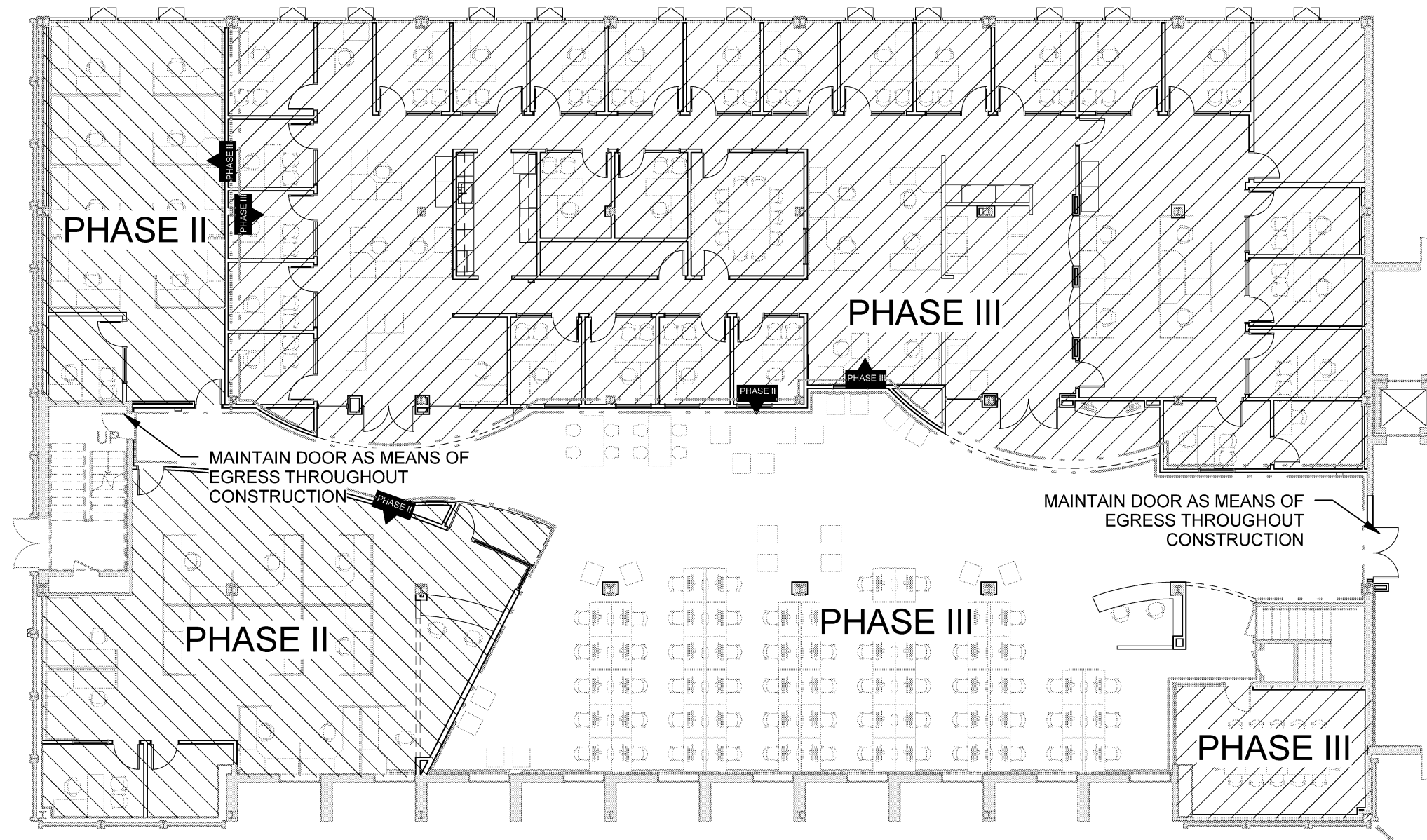
B2 LIFE SAFETY PLAN - LUTHER BONNEY
 SCALE: 1/16" = 1'-0"



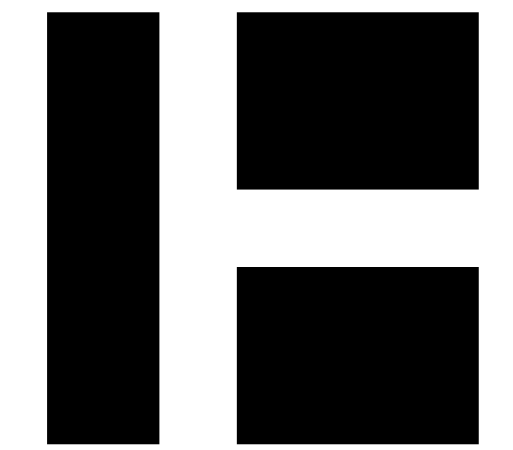
A1 PHASING PLAN - GLICKMAN
 SCALE: 1/16" = 1'-0"

PHASING PLAN KEY

- PHASE I**
 THIRD FLOOR GLICKMAN LIBRARY:
 WORK IN SHADED AREA INCLUDING BUT NOT LIMITED TO:
 NEW PARTITIONS, FLOORS, CEILINGS, AND DOOR FRAMES / SIDE
 LIGHTS AT OFFICES 302, 303, 304, 305 AND ALL ASSOCIATED
 DEMOLITION, MECHANICAL / HVAC AND ELECTRICAL WORK.
 DEMOLITION OF EXG BUILT IN DESK SYSTEM, OVERHEAD GPDW SOFFIT
 AND ASSOCIATED ELECTRICAL. ADDITIONAL NEW AND RELOCATED
 HVAC AND ELECTRICAL WORK. (SEE ELEC AND MECH SCOPE.)
 INSTALLATION OF BUILT IN CASEWORK.
- PHASE II**
 FIRST FLOOR LUTHER BONNEY:
 WORK IN SHADED AREA INCLUDING BUT NOT LIMITED TO:
 NEW PARTITIONS, FLOORS, CEILINGS, AND DOOR FRAMES /
 SIDE LIGHTS AT IT SUITES 141 AND 142 AS WELL AS ALL
 ASSOCIATED DEMOLITION, MECHANICAL / HVAC AND
 ELECTRICAL WORK. (SEE ELEC AND MECH DWGS FOR
 SCOPE)
 MAINTAIN EGRESS ACCESS TO EXTERIOR STAIR. INSTALL
 TEMPORARY PARTITION ENCLOSURES TO REDUCE NOISE,
 VIEW OF CONSTRUCTION AND DEBRIS BETWEEN PHASES.
- PHASE III**
 FIRST FLOOR LUTHER BONNEY:
 WORK IN SHADED AREA INCLUDING BUT NOT LIMITED TO:
 NEW PARTITIONS, FLOORS, CEILINGS, AND DOOR FRAMES /
 SIDE LIGHTS AT OFFICE SUITES 136, 137 AND 140 AS WELL AS
 ALL ASSOCIATED DEMOLITION, MECHANICAL / HVAC AND
 ELECTRICAL WORK. (SEE ELEC AND MECH DWGS FOR
 SCOPE)
 MAINTAIN EGRESS ACCESS TO EXTERIOR STAIR. INSTALL
 TEMPORARY PARTITION ENCLOSURES TO REDUCE NOISE,
 VIEW OF CONSTRUCTION AND DEBRIS BETWEEN PHASES.



A2 PHASING PLAN - LUTHER BONNEY
 SCALE: 1/16" = 1'-0"



HARRIMAN

AUBURN PORTLAND MANCHESTER

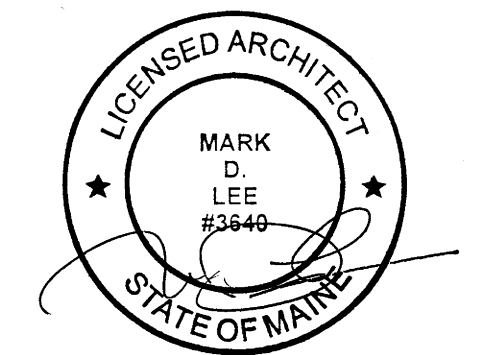
UNIVERSITY OF
 SOUTHERN MAINE
 DEPARTMENT
 REORGANIZATION
 PROJECT 2015-011
 PORTLAND, MAINE

Harriman Project No. 15457

Key Plan Proj North
 True North

Issues and Revisions

Mark	Date	Description
-	07-09-15	75% REVIEW
--	07-23-15	100% REVIEW
---	08-03-15	OWNER REVIEW
----	08-10-15	ISSUED FOR BID



Drawing Scales	As indicated
PA / PE:	MDL
Drawn By:	ERP
© 2015	Harriman Associates

LIFE SAFETY AND
 PHASING PLAN

A01.1