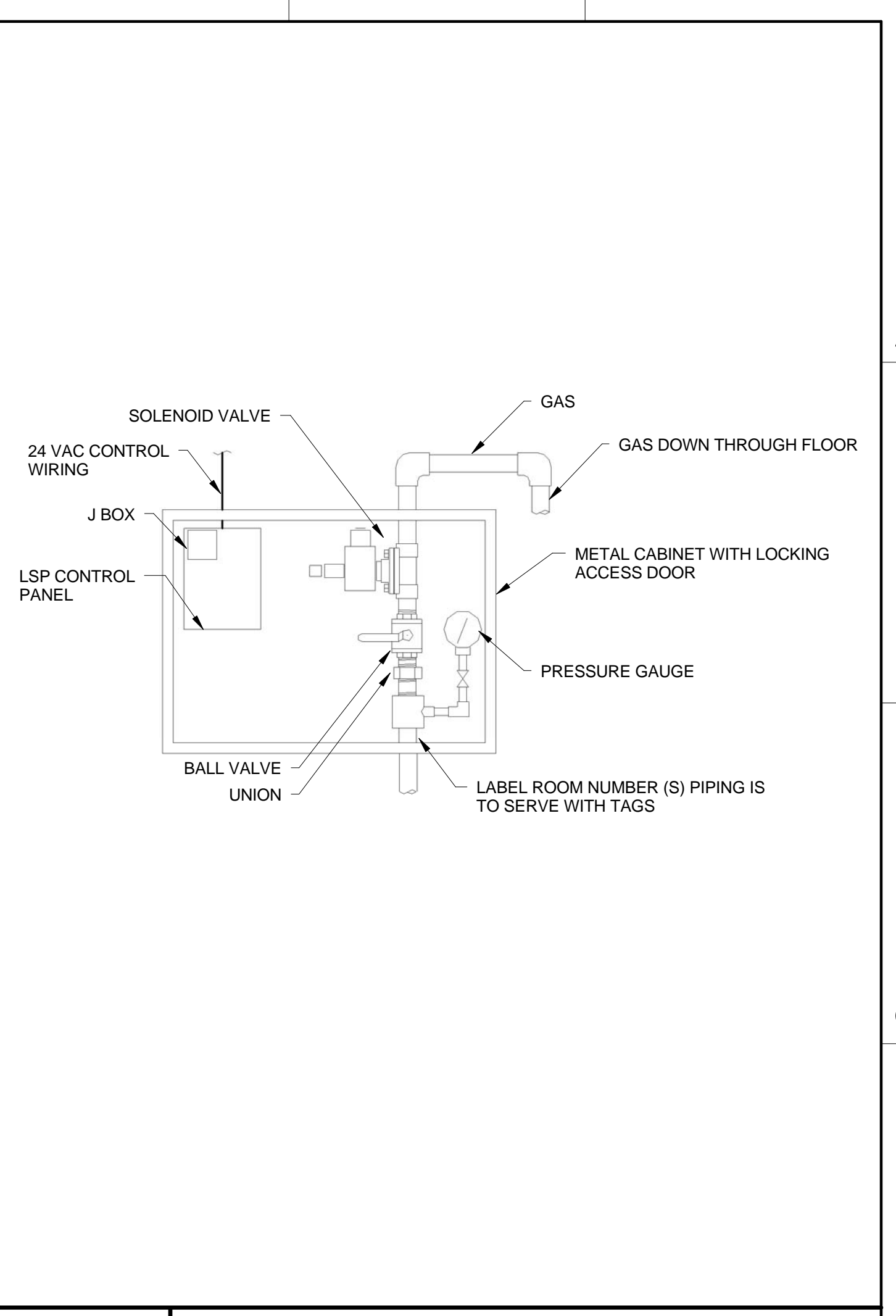
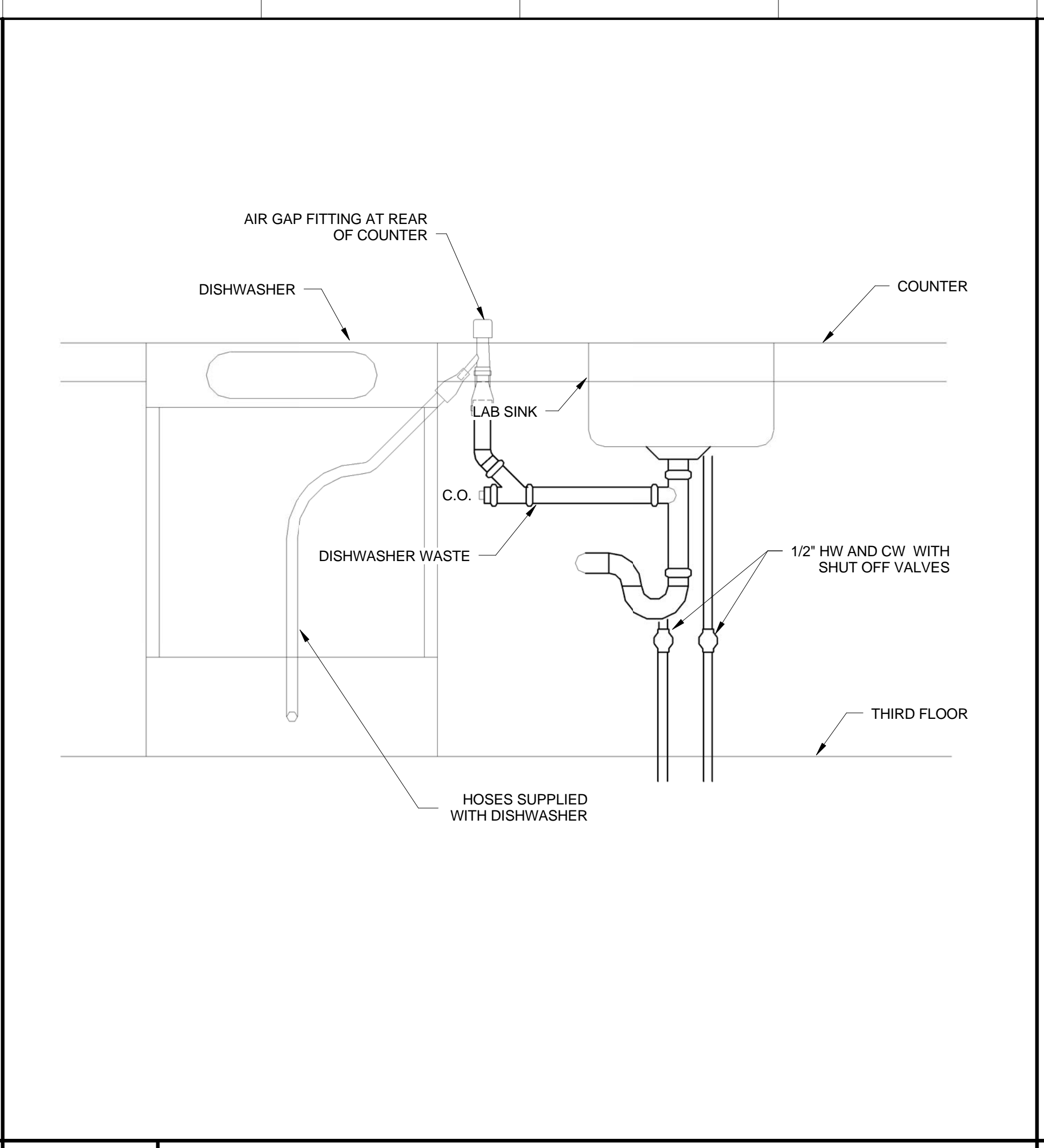
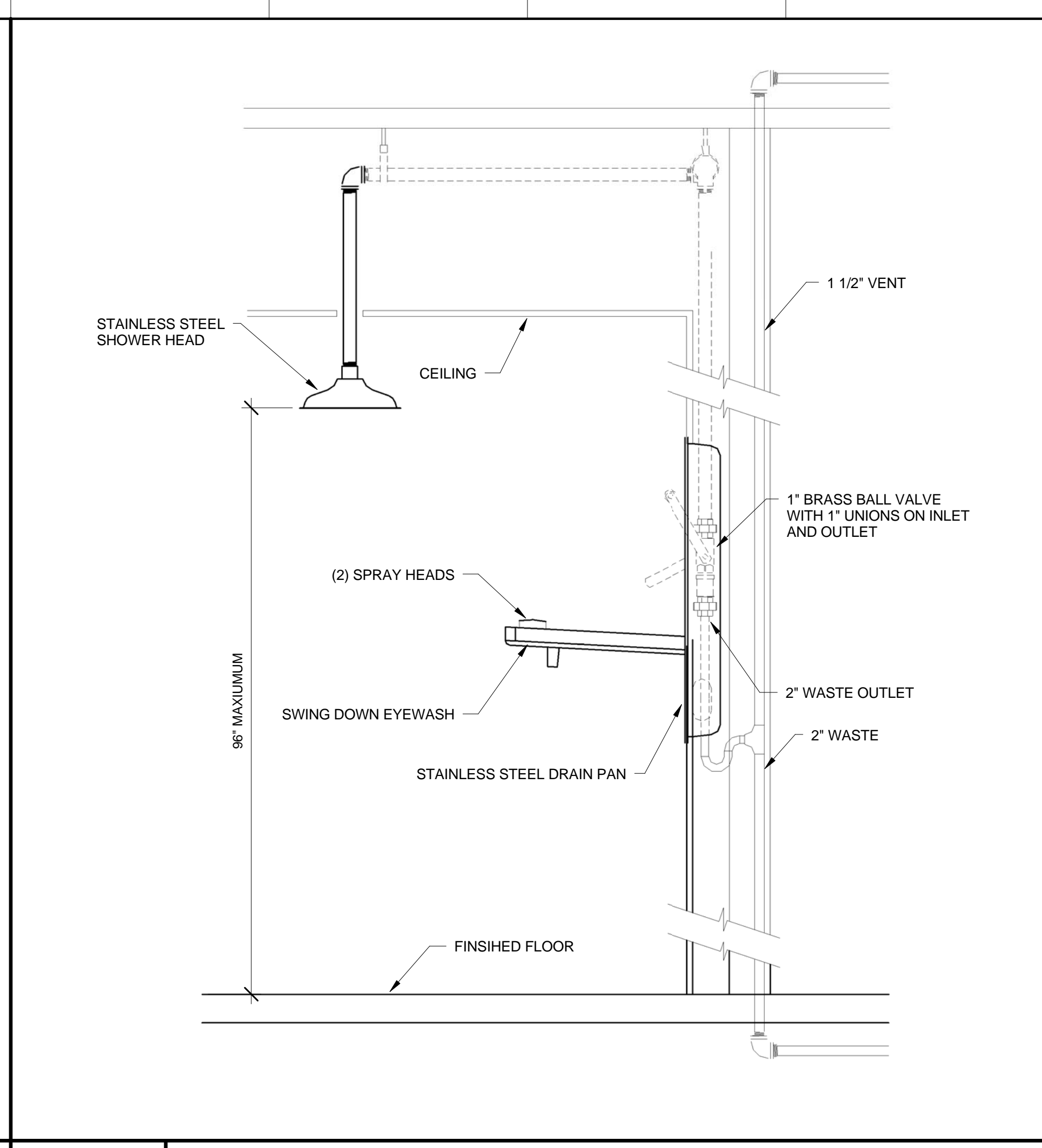
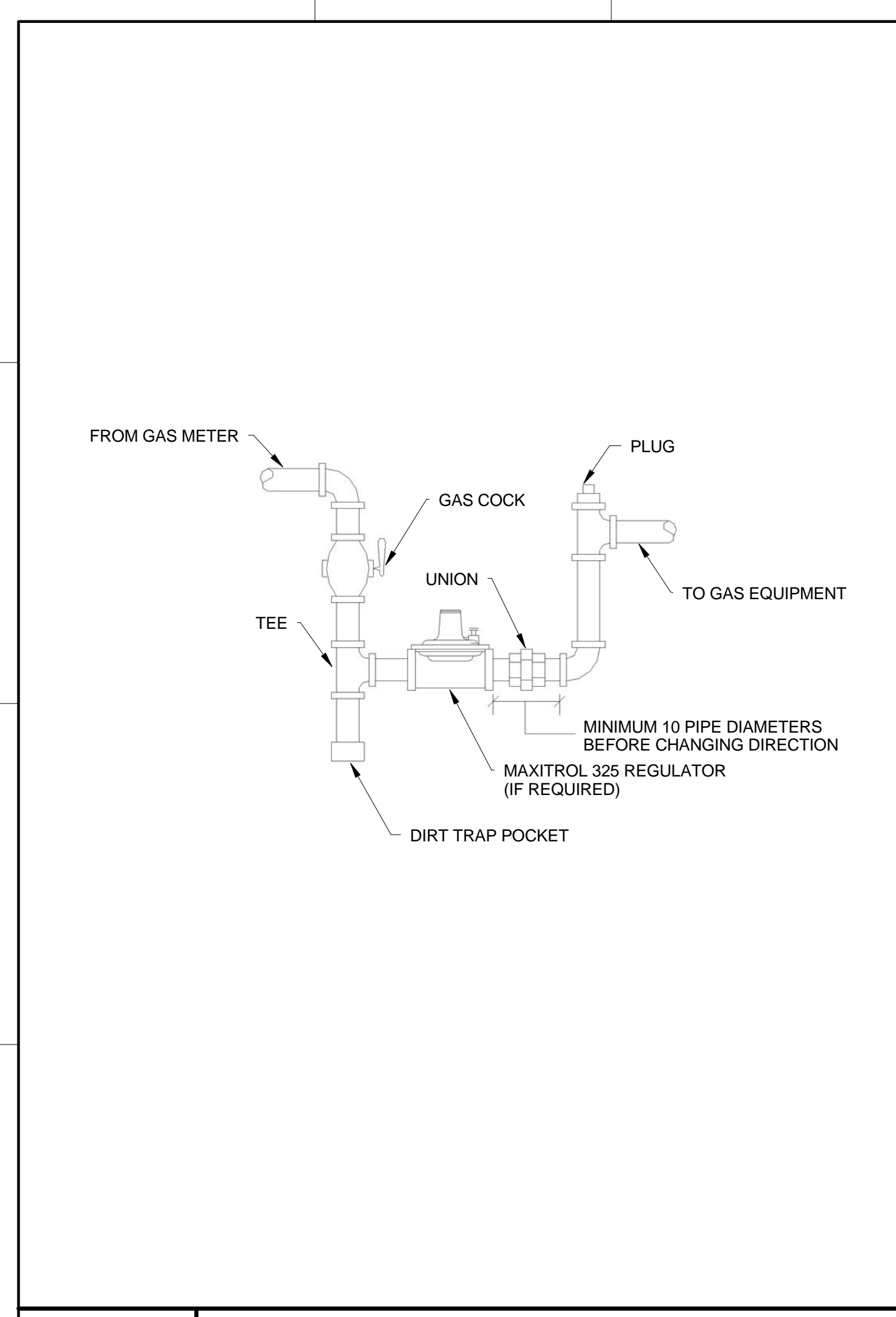


160 Veranda Street
 Portland, Maine 04103
 T: 207.221.2240
 F: 207.221.2246
 Web: www.allied-eng.com

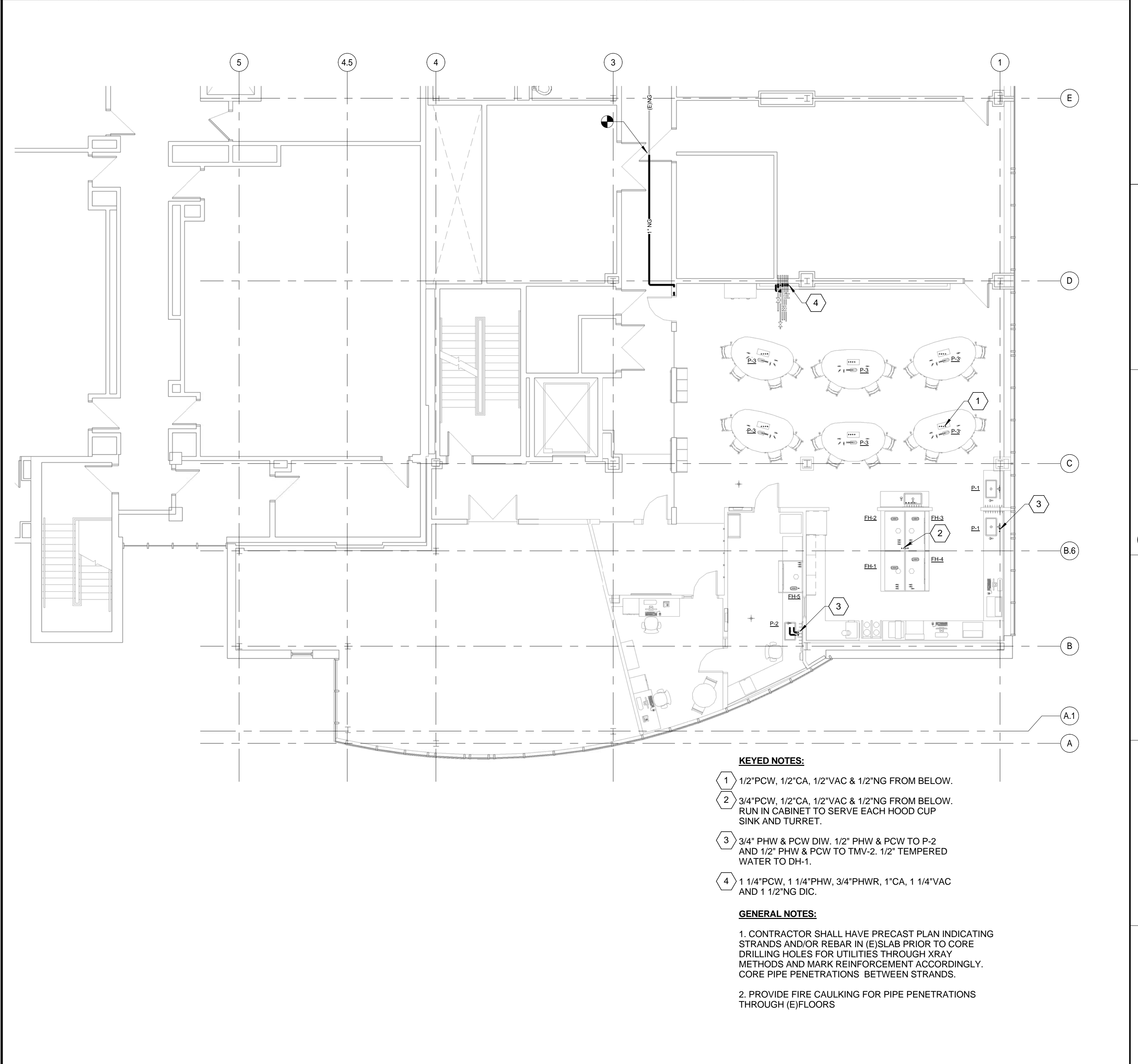
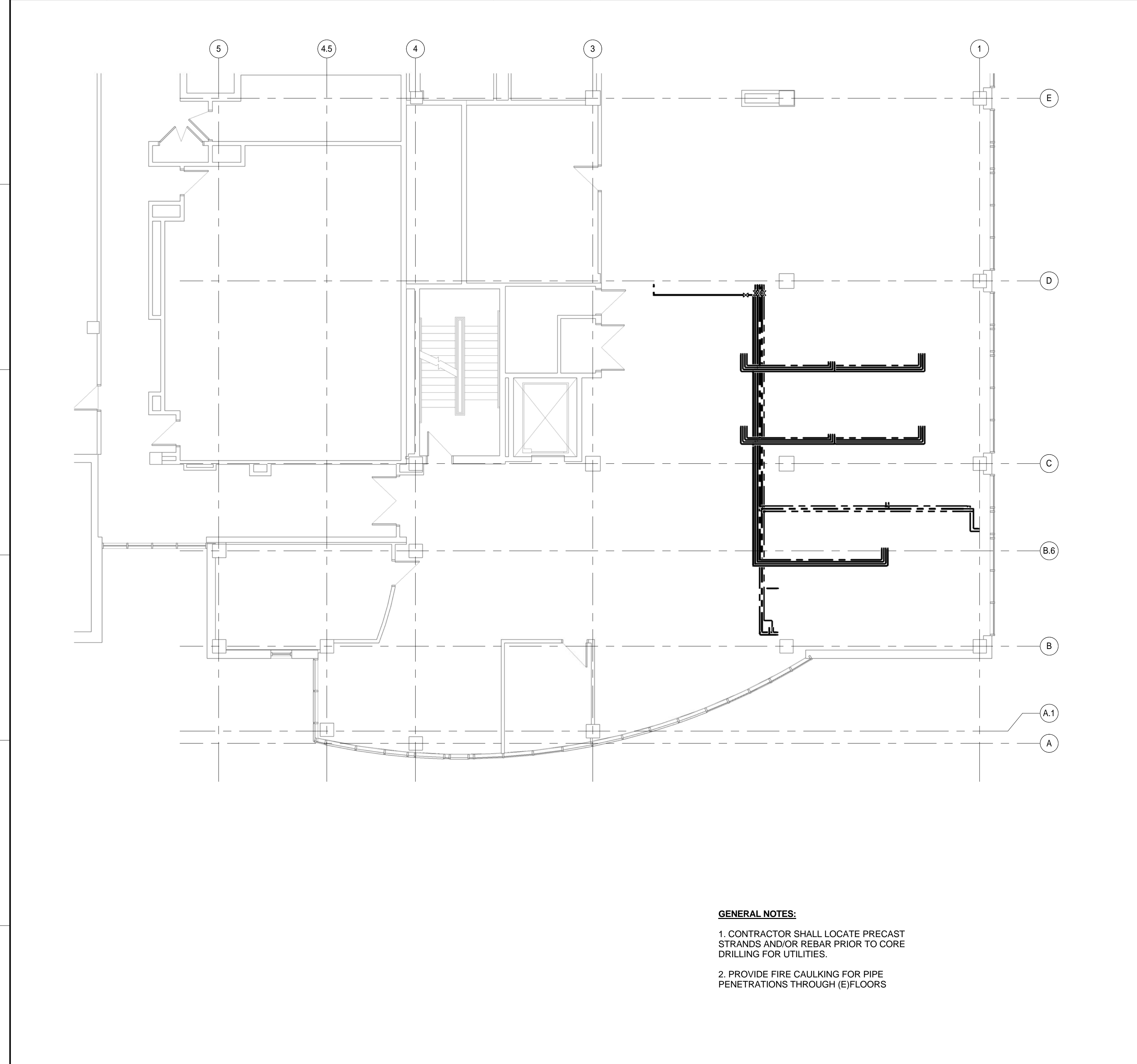


D1 DETAIL - GAS EQUIPMENT CONNECTION

D4 DETAIL - EMERGENCY SAFETY STATION

D8 DETAIL - PREP ROOM PLUMBING

D12 DETAIL - DUAL GAS & ELECTRIC SHUT OFF VALVE



GENERAL NOTES:
 1. CONTRACTOR SHALL LOCATE PRECAST STRANDS AND/OR REBAR PRIOR TO CORE DRILLING FOR UTILITIES.
 2. PROVIDE FIRE CAULKING FOR PIPE PENETRATIONS THROUGH (E)FLOORS

KEYED NOTES:
 1 1/2"PCW, 1/2"CA, 1/2"VAC & 1/2"NG FROM BELOW.
 2 3/4"PCW, 1/2"CA, 1/2"VAC & 1/2"NG FROM BELOW. RUN IN CABINET TO SERVE EACH HOOD CUP SINK AND TURRET.
 3 3/4" PHW & PCW DIW, 1/2" PHW & PCW TO P-2 AND 1/2" PHW & PCW TO TMV-2. 1/2" TEMPERED WATER TO DH-1.
 4 1 1/4"PCW, 1 1/4"PHW, 3/4"PHWR, 1"CA, 1 1/4"VAC AND 1 1/2"NG DIC.

GENERAL NOTES:
 1. CONTRACTOR SHALL HAVE PRECAST PLAN INDICATING STRANDS AND/OR REBAR IN (E)SLAB PRIOR TO CORE DRILLING HOLES FOR UTILITIES THROUGH XRAY METHODS AND MARK REINFORCEMENT ACCORDINGLY. CORE PIPE PENETRATIONS BETWEEN STRANDS.
 2. PROVIDE FIRE CAULKING FOR PIPE PENETRATIONS THROUGH (E)FLOORS

J1 PLUMBING - PART PLAN - SECOND FLOOR - SUPPLY

J8 PLUMBING - PART PLAN - THIRD FLOOR - SUPPLY

UNIVERSITY OF SOUTHERN MAINE

SCIENCE BUILDING
 C300 CHEMISTRY LAB

96 Falmouth Street, Portland, Maine
 04101

NO.	DESCRIPTION	DATE



CONTENT:
 PLUMBING
 PART PLANS
 SECOND & THIRD FLOORS
 SUPPLY

DRAWN BY: _____ Author

PROJECT NO: 15049

DATE: JULY 21, 2015

REVISED: _____

SCALE: AS NOTED

PL1.1

Project Phase
 SET

COPYRIGHT © 2015 BY LAVALLEE|BRENSINGER PROFESSIONAL ASSOCIATION. ALL RIGHTS RESERVED. NO REPRODUCTION WITHOUT PERMISSION.

7/20/2015 4:02:21 PM N:\Projects\2015\15049 - USM Science Building C300 Chemistry Lab - redesign\from 14075000 Drawing Files\15049.rvt