



FINISH LEGEND

09 65 00 RESILIENT FLOORING		09 90 00 PAINT and COATING	
RF-1	TYPE: RUBBER SHEET MANUF: NORA RUBBER SERIES: NORAPLAN DEGREE WIDTH/SIZE: 4" WIDE ROLLS COLOR: 6329 DENVER	P-1	TYPE: PAINT MANUF: PITTSBURGH PAINTS COLOR: PPG 508B 72045 (RL 1 464) FINISH: EPOXY
RF-2	TYPE: RUBBER SHEET MANUF: NORA RUBBER SERIES: NORAPLAN DEGREE WIDTH/SIZE: 4" WIDE ROLLS COLOR: 6330 JUNEAU	P-2	TYPE: PAINT MANUF: PITTSBURGH PAINTS COLOR: PPG 1218-3 LIVELY LAUGH LRV68 FINISH: EPOXY
RF-3	TYPE: RESILIENT FLOOR TILE MANUF: ARMSTRONG SERIES: RAFFIA WIDTH/SIZE: 12" X 24" COLOR: 55800 SNOWDRIFT	P-3	TYPE: PAINT MANUF: TBD COLOR: TBD FINISH: -
RF-4	TYPE: RESILIENT FLOOR TILE MANUF: ARMSTRONG SERIES: RAFFIA WIDTH/SIZE: 12" X 24" COLOR: 55801 PLATINUM	10 26 01 WALL PROTECTION PANEL	
RF-5	TYPE: RESILIENT FLOOR TILE MANUF: ARMSTRONG SERIES: RAFFIA WIDTH/SIZE: 12" X 24" COLOR: 55802 CHARCOAL DUST	CG-1 TYPE: CORNER GUARDS NOTES: SEE FLOOR PLAN FOR TYPE CG COLOR CHART P-1 XXXX #0000	
RF-6	TYPE: RESILIENT FLOOR TILE MANUF: ARMSTRONG SERIES: RAFFIA WIDTH/SIZE: 12" X 24" COLOR: 55813 WAVE	12 36 00 EPOXY RESIN	
ICB-1	TYPE: INTEGRAL COVE BASE HEIGHT: 6"	ER-1 TYPE: MOLDED EPOXY RESIN COUNTERTOP SERIES: KEWALINEE COLOR: GREY	
RB-1	TYPE: RUBBER WALL BASE MANUF: JOHNSONITE SERIES: TRADITIONAL 4" SIZE: 4" COLOR: TO BE SELECTED	12 24 00 WINDOW TREATMENTS	
		WT-1 TYPE: MANUAL SHADES @ OFFICE & PREP MANUF: MECOSHADE SERIES: MECO 5 SERIES COLOR: TBD	
		MISCELLANEOUS	
		TBD TO BE DETERMINED	
		PTM PATCH TO MATCH	
		ETR EXISTING TO REMAIN	
		SC SEALED CONCRETE	

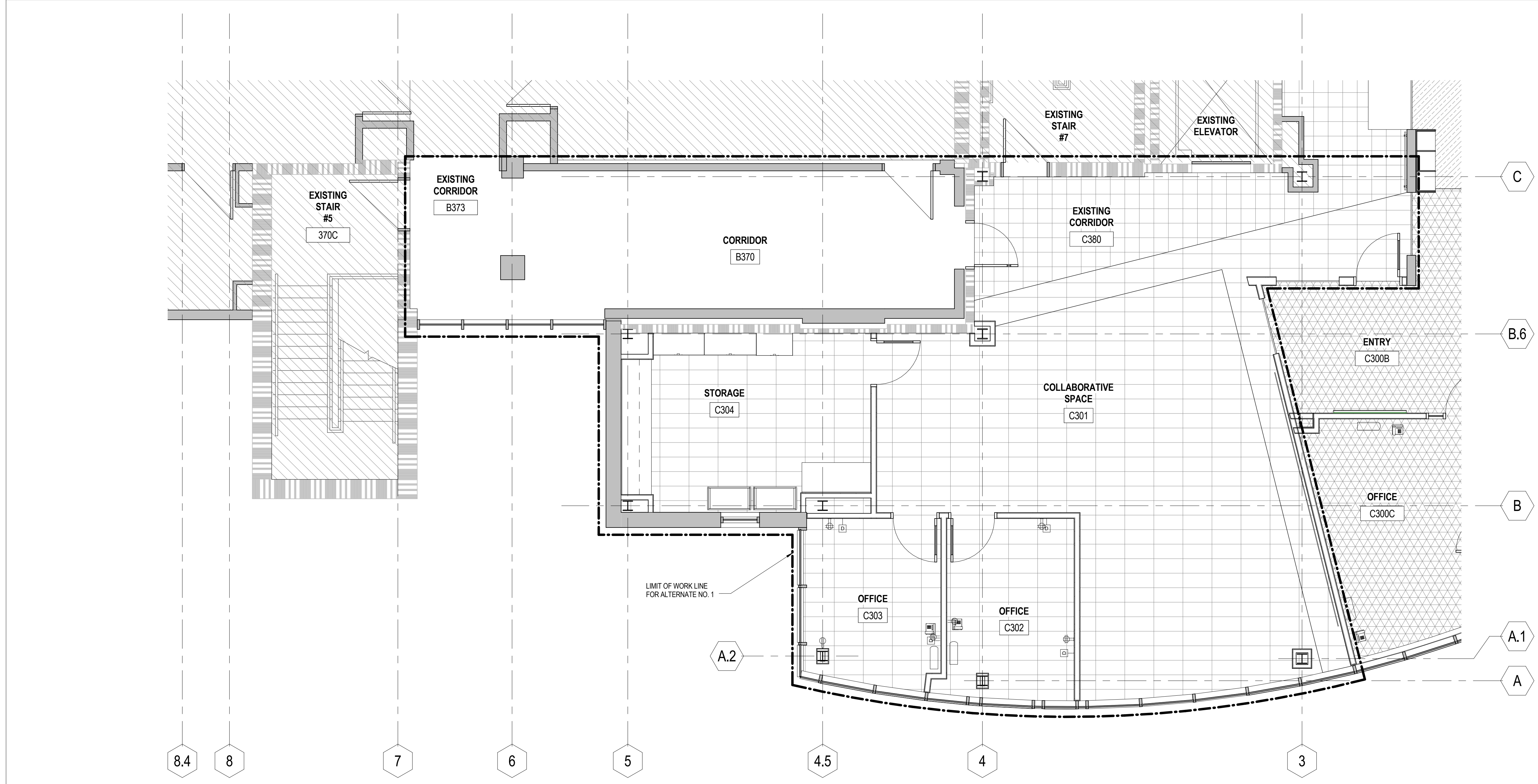
- GENERAL NOTES:**
- REFER TO FINISH SCHEDULE FOR MORE INFORMATION. REFER TO AI DRAWINGS FOR FLOOR PATTERNS AND ACCENT WALL LOCATIONS.
 - HM DOOR FRAMES AND WINDOW FRAMES ARE TO BE PTD TO MATCH ADJACENT WALLS, UON.
 - ALL GWB CEILINGS AND SOFFITS SHALL BE PAINTED FLAT P-1 UNLESS NOTED OTHERWISE ON THE REFLECTED CEILING PLAN. REFER TO R.C.P FOR ALL NOTATIONS REGARDING ACCENT SOFFITS AND GWB CEILING PAINTS.
 - ALL EXPOSED STEEL COMPONENTS ARE TO BE PAINTED.
 - ALL FINISHED FLOORING SHALL EXTEND BENEATH CASEWORK, MILLWORK, AND PLUMBING FIXTURES U.N.O.
 - ALL SHEET FLOORING SEAMS SHALL BE WELDED WITH MATCHING WELD COLORS.
 - NO TRANSITION STRIPS REQUIRED BETWEEN RESILIENT FLOORINGS.
 - WINDOW SILLS SHALL BE ER-1.
 - ALLOW ADDITIONAL LEAD TIME FOR ORDERING, SHIPPING, AND FABRICATION OF SPECIFIED INTERIOR FINISH MATERIALS IN MANUFACTURER AVAILABLE SHEET SIZES. **SUBSTITUTIONS WILL NOT BE ACCEPTED.**
 - ALL CASEWORK FINISHES ARE TO BE BY LABORATORY FURNITURE VENDOR. SEE SPECIFICATION FOR MANUFACTURER.

ID FINISH SCHEDULE - BASE BID

ROOM #	ROOM NAME	FIN FLOORING	FIN WALL BASE	FIN WALL FINISH	FIN WALL PROTECTI ON	FIN MILLWORK/CASEWORK	FIN COUNTERTOP MATERIAL	FIN TEXTILES	FIN COMMENTS	REVISIONS
C300	CHEMISTRY LAB	RF-1/RF-2	ICB-1	P-1,P-2	CORNER GUARDS	TRANSPARENT FINISH MAPLE	EPOXY RESIN	-	-	
C300A	PREP ROOM	RF-2	ICB-1	P-1,P-2	-	TRANSPARENT FINISH MAPLE	EPOXY RESIN	-	-	
C300B	ENTRY	RF-2	ICB-1	P-1,P-2	-	TRANSPARENT FINISH MAPLE	-	-	-	
C300C	OFFICE	RF-2	ICB-1	P-1	-	TRANSPARENT FINISH MAPLE	-	-	-	
C380	EXISTING CORRIDOR	ETR/RF-6	RB-1	P-1	-	-	-	-	-	

ID FINISH SCHEDULE - ALTERNATE NO. 1

ROOM #	ROOM NAME	FIN FLOORING	FIN WALL BASE	FIN WALL FINISH	FIN WALL PROTECTI ON	FIN MILLWORK/CASEWORK	FIN COUNTERTOP MATERIAL	FIN TEXTILES	FIN COMMENTS	REVISIONS
B370	CORRIDOR	MATCH EXISTING	RB-1	P-3	-	-	-	-	-	
C301	COLLABORATIVE SPACE	RF-3, RF-4 RF-5, RF-6	RB-1	P-3	-	-	-	-	-	
C302	OFFICE	RF-5	RB-1	P-3	-	-	-	-	-	
C303	OFFICE	RF-5	RB-1	P-3	-	-	-	-	-	
C304	STORAGE	RF-5	RB-1	P-1	-	TRANSPARENT FINISH MAPLE	EPOXY RESIN	-	-	
C380	EXISTING CORRIDOR	ETR/RF-6	RB-1	P-1	-	-	-	-	-	



J4 FINISH PLAN - ALTERNATE NO. 1
 A1.2 1/4" = 1'-0"

UNIVERSITY OF SOUTHERN MAINE

**SCIENCE BUILDING
 C300 CHEMISTRY LAB**

70 Falmouth Street Portland, Maine
 04101

NO.	DESCRIPTION	DATE

FOR ADDITIONAL INFORMATION, REFER TO PROJECT MANUAL.

CONTENT:
 GENERAL NOTES, LEGENDS, ROOM FINISH SCHEDULES AND INTERIOR DESIGN PLAN - ALTERNATE NO. 1

DRAWN BY: Author

PROJECT NO: 14-049-00

DATE: 07/21/2015

REVISED:

SCALE: As indicated

A11.2

Project Phase
PERMIT SET

COPYRIGHT © 2015 BY LAVALLEE BRENSINGER PROFESSIONAL ASSOCIATION. ALL RIGHTS RESERVED. NO REPRODUCTION WITHOUT PERMISSION.

C:\Projects\14-049\14-049-00\Chem Lab_Corridor Revit 2015.mxd mshain.net 7/22/2015 2:49:36 AM