



A

B

C

D

UNIVERSITY OF SOUTHERN MAINE

SCIENCE BUILDING
C300 CHEMISTRY LAB

70 Falmouth Street Portland, Maine
04101

NO. DESCRIPTION DATE

NO.	DESCRIPTION	DATE

G

H

CONTENT:
DOOR AND FRAME TYPES & 1-1/2" DETAILS

DRAWN BY: Author
PROJECT NO: 14-049-00
DATE: 07/21/2015
REVISED:
SCALE: As indicated

Project Phase

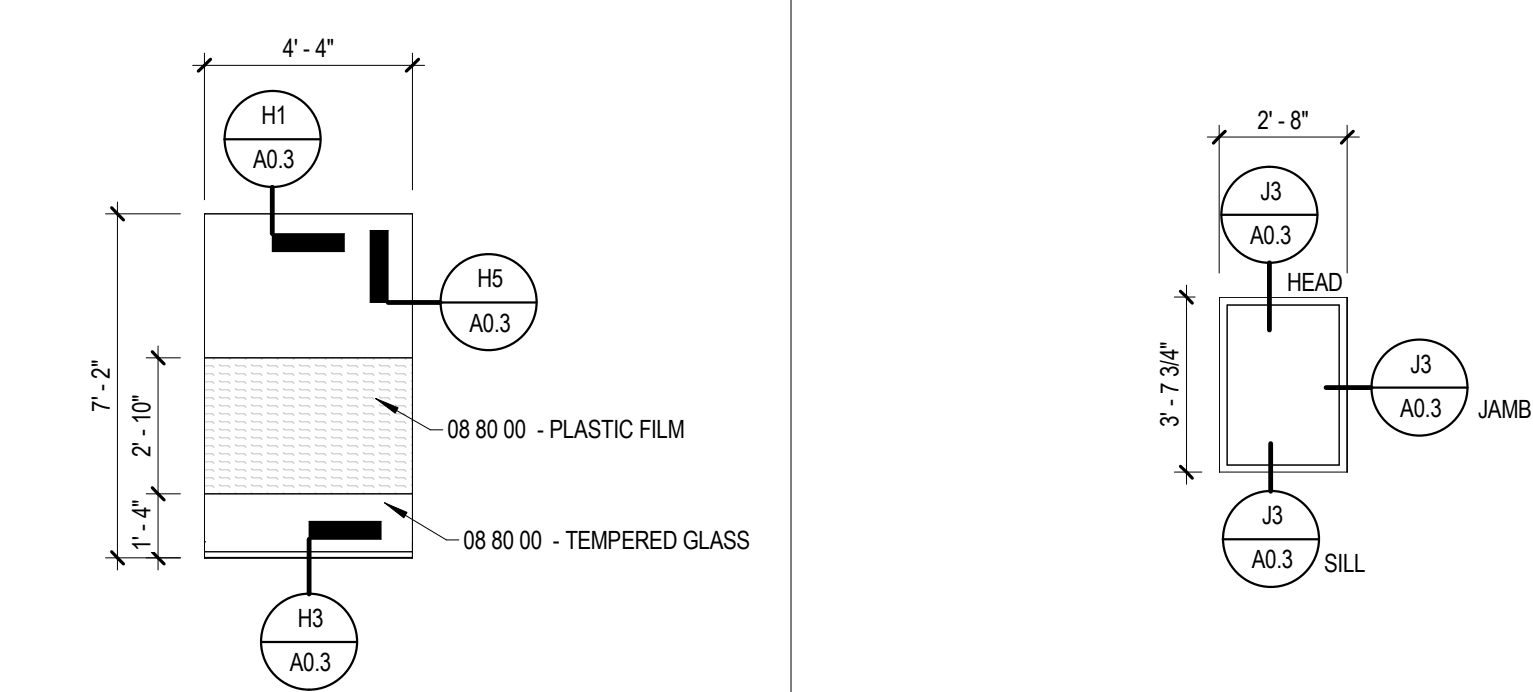
COPYRIGHT © 2015 BY LAVALLEE BRENSINGER PROFESSIONAL ASSOCIATION. ALL RIGHTS RESERVED. NO REPRODUCTION WITHOUT PERMISSION.

A0.3

FOR ADDITIONAL INFORMATION, REFER TO PROJECT MANUAL.

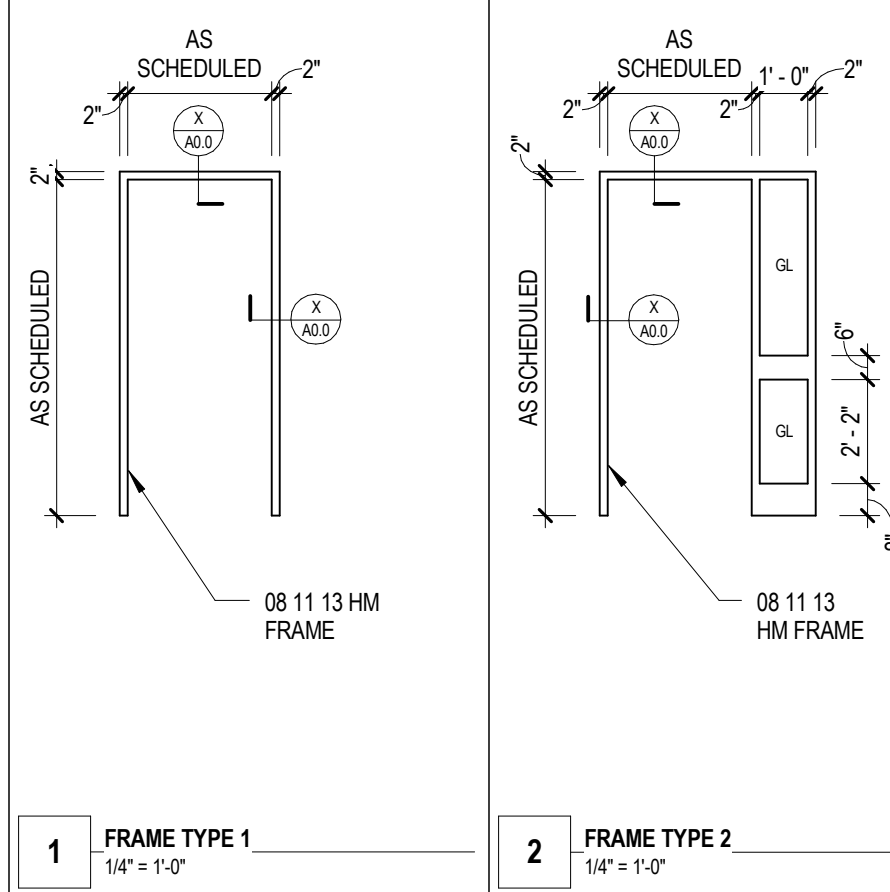
I

J



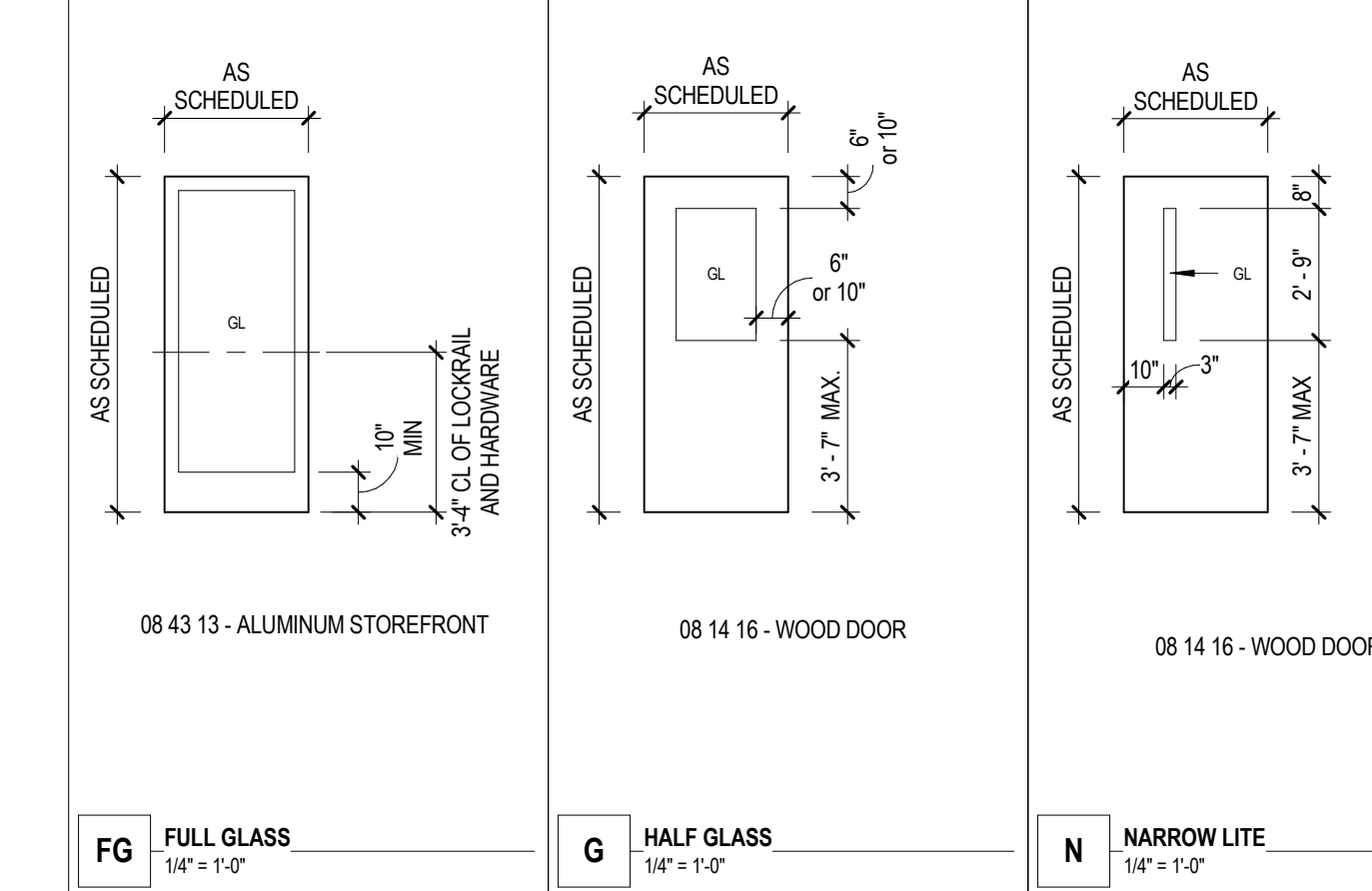
D11 WINDOW TYPE B
A0.3 1/4" = 1'-0"

D12 WINDOW TYPE A
A0.3 1/4" = 1'-0"



1 FRAME TYPE 1
1/4" = 1'-0"

2 FRAME TYPE 2
1/4" = 1'-0"



FG FULL GLASS
1/4" = 1'-0"

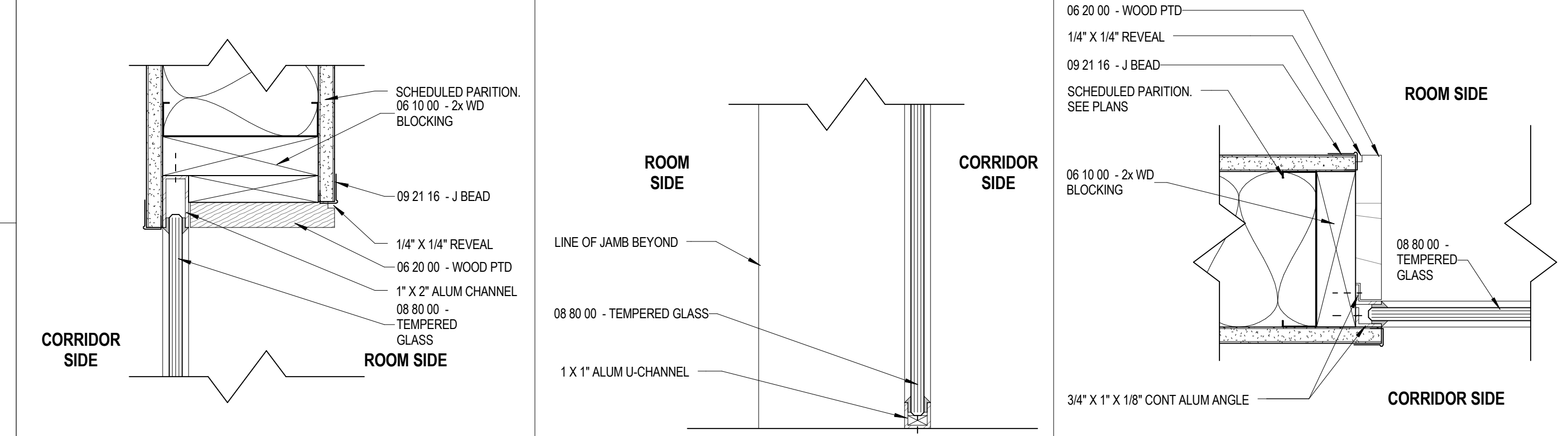
G HALF GLASS
1/4" = 1'-0"

N NARROW LITE
1/4" = 1'-0"

DOOR & FRAME SCHEDULE - BASE BID														
MARK	FROM ROOM		TO ROOM		DOOR				FRAME		HARDWARE SETS	COMMENTS	REVISION	
	No.	NAME	No.	NAME	WD	HT	THK	MATL	TYPE	RATING				MATL
C300	C300	CHEMISTRY LAB	C380A	EXISTING CORRIDOR	3'-0"	7'-0"	1 3/4"	ALUM	FG	-	ALUM	1		
C300A.1	C300A	PREP ROOM	C300	CHEMISTRY LAB	3'-0"	7'-0"	1 3/4"	WD	G	-	HM	1		
C300A.2	C300C	OFFICE	C300A	PREP ROOM	3'-0"	7'-0"	1 3/4"	WD	G	-	HM	2		
C300B	C300B	ENTRY	C380	EXISTING CORRIDOR	3'-0"	7'-0"	1 3/4"	ALUM	FG	-	ALUM	1		
C300C	C300C	OFFICE	C300B	ENTRY	3'-0"	7'-0"	1 3/4"	WD	G	-	HM	2		
C300D	C300D	SHELL SPACE	C380	EXISTING CORRIDOR	6'-0"	7'-0"	1 3/4"	WD (ETR)	N	-	HM (ETR)	1 (ETR)	ETR	EXIST DOOR AND FRAME TO BE RELOCATED

DOOR & FRAME SCHEDULE - ALTERNATE NO. 1														
MARK	FROM ROOM		TO ROOM		DOOR				FRAME		HARDWARE SETS	COMMENTS	REVISION	
	No.	NAME	No.	NAME	WD	HT	THK	MATL	TYPE	RATING				MATL
B366	B366	EXISTING CHEMISTRY TEACHING LAB	B370	CORRIDOR	3'-4"	7'-0"	1 3/4"	WD (ETR)	F	=	HM (ETR)	1 (ETR)	1	ALTERNATE NO. 1
B370	B370	CORRIDOR	C380	EXISTING CORRIDOR	3'-0"	7'-0"	1 3/4"	WD	N	1 1/2 HOURS	HM	1	4	ALTERNATE NO. 1
C302	C302	OFFICE	C301	COLLABORATIVE SPACE	3'-0"	7'-0"	1 3/4"	WD	G	-	HM	1	2	ALTERNATE NO. 1
C303	C301	COLLABORATIVE SPACE	C303	OFFICE	3'-0"	7'-0"	1 3/4"	WD	G	-	HM	1	2	ALTERNATE NO. 1
C304	C304	STORAGE	C301	COLLABORATIVE SPACE	3'-0"	7'-0"	1 3/4"	WD	G	-	HM	1	3	ALTERNATE NO. 1

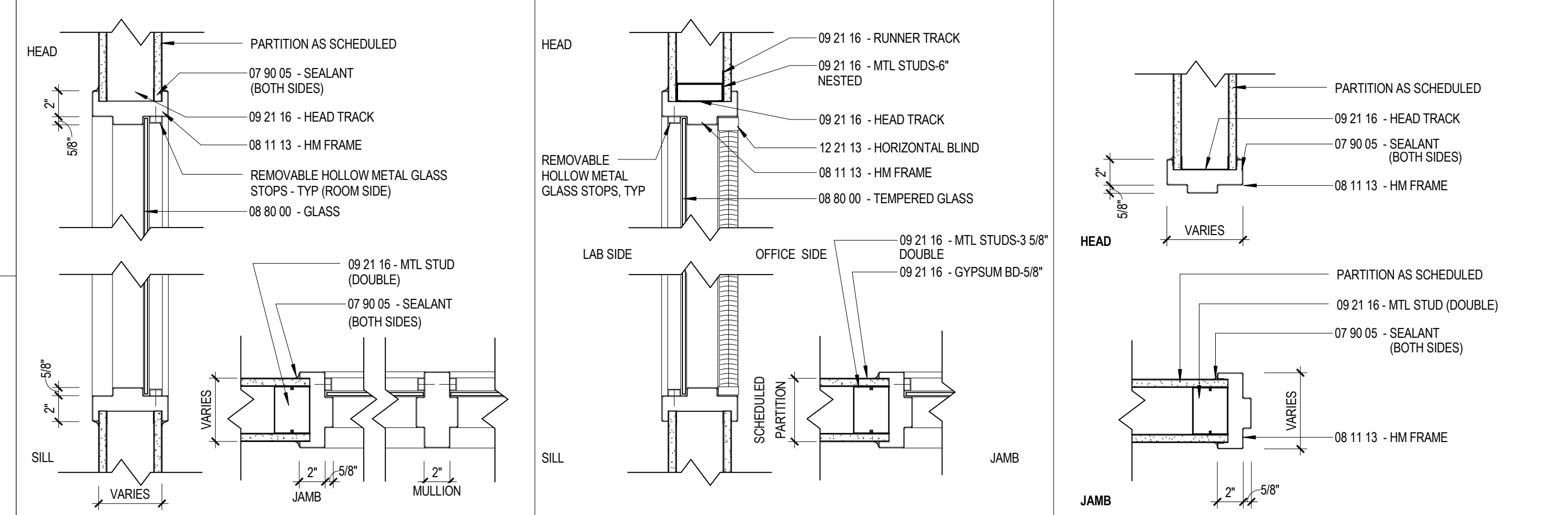
DOOR HARDWARE SETS											
SET NO.	LOCKSET TYPE & LATCH FUNCTION	CLOSER TYPE & QUANTITY	HINGE TYPE & QUANTITY	STOPS	SEALS	PROTECTION	FLUSH BOLTS	ELECTRICAL	SPECIAL HARDWARE	HARDWARE BY OWNER	HARDWARE NOTES
1	CLASSROOM	(1) CLOSER	(3) BUTT HINGES	OVERHEAD	SILENCERS	KICKPLATE	-	-	-	-	-
2	OFFICE	-	(3) BUTT HINGES	OVERHEAD	SILENCERS	-	-	-	-	-	-
3	STORAGE	(1) CLOSER	(3) BUTT HINGES	-	SILENCERS	KICKPLATE	-	-	-	-	-
4	EXIT DEVICE WITH LEVER TRIM	(1) CLOSER	(3) BUTT HINGES	-	SMOKE	KICKPLATE	-	-	-	-	-
ETR	ETR	ETR	ETR	ETR	ETR	ETR	-	-	-	-	-



H1 Window Type B-Head
A0.3 3/8" = 1'-0"

H3 Window Type B-Sill
A0.3 3/8" = 1'-0"

H5 Window Type B-Jamb
A0.3 3/8" = 1'-0"



J1 HM FRAME DETAILS at INTERIOR LITE (VERT DIVIDER)
A0.3 1 1/2" = 1'-0"

J3 BORROWED LITE HEAD, SILL, and JAMB DETAILS
A0.3 1 1/2" = 1'-0"

J5 HM FRAME DETAILS at MTL STUD PARTITION
A0.3 1 1/2" = 1'-0"