



**DEMOLITION LEGEND:**

(S1) DEMOLITION NOTE

— — — — — EXISTING CONSTRUCTION TO REMAIN

- - - - - EXISTING CONSTRUCTION TO BE REMOVED

NOTE: ALL NUMBERS OMITTED ARE NOT IN USE

**DEMOLITION NOTES:**

**GENERAL NOTES:**

1. THE DEMOLITION PLANS AND ELEVATIONS ILLUSTRATE THE CONCEPT OF THE ARCHITECTURAL DEMOLITION. THEY ARE NOT INTENDED TO BE A COMPLETE REPRESENTATION OF ALL DEMOLITION WORK REQUIRED. ALL DRAWINGS AND SPECIFICATIONS ARE TO BE CONSIDERED WHEN DETERMINING THE SCOPE OF DEMOLITION FOR THE PROJECT. IT IS THE INTENT OF THE DRAWINGS AND SPECIFICATIONS TO REQUIRE DEMOLITION OF ALL BUILDING ELEMENTS AS NECESSARY FOR THE INSTALLATION OF WORK REQUIRED BY THE SCOPE OF THIS PROJECT.
2. DASHED LINES GENERALLY REPRESENT ITEMS TO BE REMOVED. IT IS THE CONTRACTOR'S RESPONSIBILITY TO FIELD VERIFY EXACT LIMITS AND DETAILS OF REQUIRED DEMOLITION AND COORDINATE WITH PLANS AND DETAILS.
3. REMOVE PARTITIONS TO STRUCTURE ABOVE, UNLESS OTHERWISE INDICATED BY CONSTRUCTION DETAILS.
4. REMOVE MASONRY FOR NEW OPENINGS AS REQUIRED FOR THE INSTALLATION OF NEW LINTELS.
5. REMOVE DOORS, FRAMES AND HARDWARE INCLUDING SIDELIGHTS, TRANSOMS AND THRESHOLDS WHERE DOORS ARE SHOWN DASHED, UNLESS OTHERWISE INDICATED.
6. REMOVE PORTIONS OF ALL SUSPENDED CEILINGS FOR THE INSTALLATION OF NEW WORK TO BE DONE ABOVE CEILINGS, UNLESS OTHERWISE INDICATED. SAVE USABLE COMPONENTS FOR REINSTALLATION WHERE CEILINGS ARE NOT BEING REPLACED.
7. REMOVE ALL CHALK, MARKER AND TACK BOARDS, SHELVING AND OTHER EQUIPMENT ON WALLS TO BE REMOVED OR FURRED.
8. REMOVE CONCRETE SLABS AND FILLS AS REQUIRED FOR INSTALLATION OF NEW MECHANICAL, ELECTRICAL AND PLUMBING SERVICES. SEE MECHANICAL, ELECTRICAL AND PLUMBING DRAWINGS.

**CONCRETE**

C7 REMOVE PORTION OF PRECAST CONCRETE WALL PANEL AS REQUIRED FOR FOR NEW OPENING.

**PARTITIONS**

P1 REMOVE STUD AND GYPSUM BOARD PARTITION.  
 P3 REMOVE PORTION OF PARTITION FOR NEW OPENING.

**DOORS AND WINDOWS**

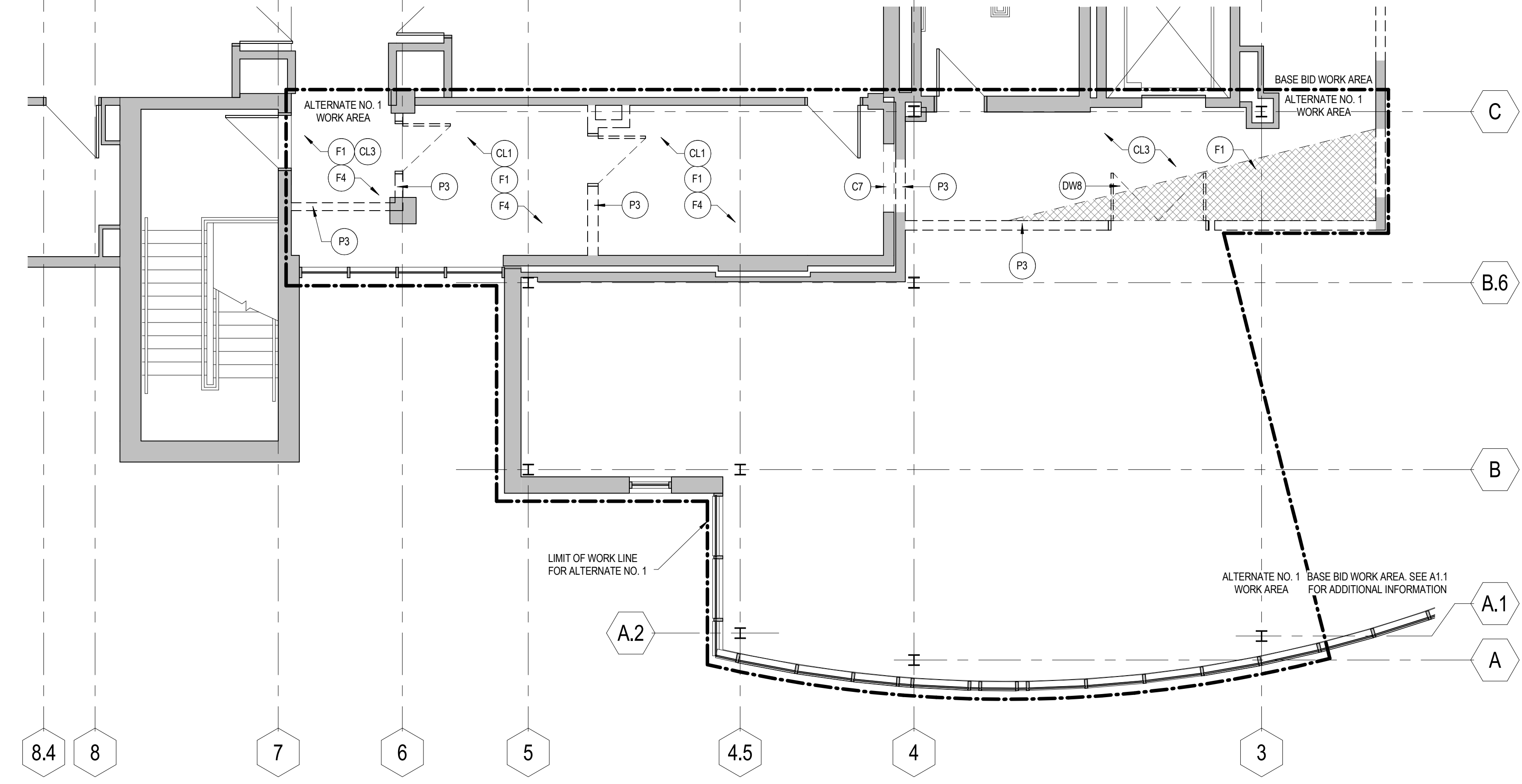
DW2 REMOVE DOOR AND HARDWARE ONLY (EXISTING FRAME TO REMAIN).  
 DW4 REMOVE EXISTING DOOR AND FRAME FOR RELOCATION.  
 DW8 REMOVE DOOR AND FRAME.

**FLOORING AND FINISH**

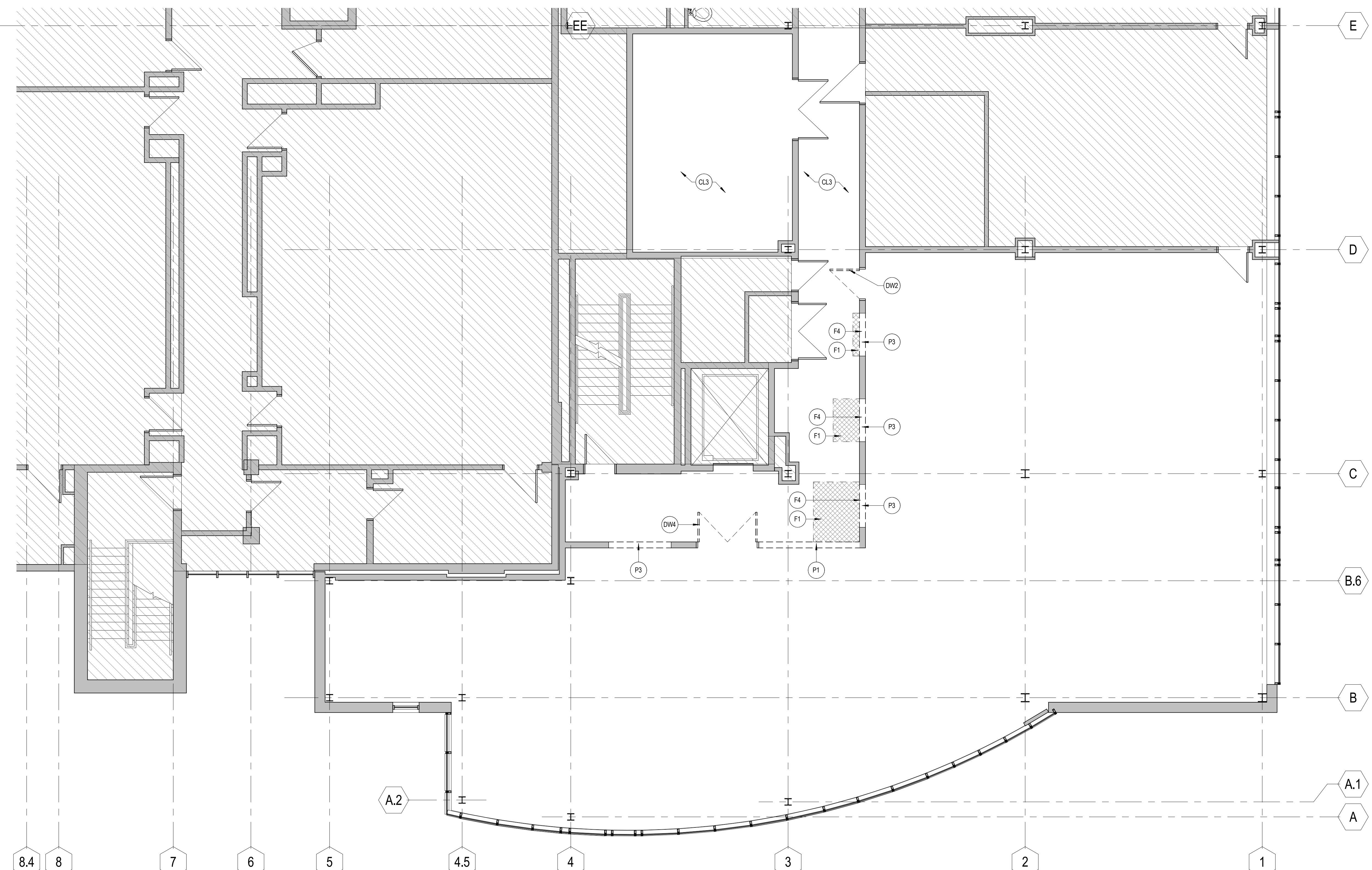
F1 REMOVE VCT / VINYL SHEET FLOORING.  
 F4 REMOVE BASE.

**CEILING**

CL3 REMOVE PORTIONS OF DRYWALL CEILING AS REQUIRED FOR WORK ABOVE CEILING.



**E4** DEMOLITION PLAN - ALTERNATE NO. 1  
 AD.1 3/16" = 1'-0"



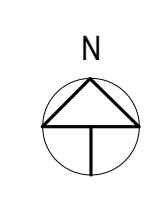
**J4** DEMOLITION PLAN - BASE BID  
 AD.1 3/16" = 1'-0"

UNIVERSITY OF SOUTHERN MAINE

**SCIENCE BUILDING  
 C300 CHEMISTRY LAB**

70 Falmouth Street Portland, Maine  
 04101

NO.	DESCRIPTION	DATE



FOR ADDITIONAL INFORMATION, REFER TO PROJECT MANUAL.

CONTENT: DEMOLITION PLANS	
DRAWN BY:	Author
PROJECT NO:	14-049-00
DATE:	07/21/2015
REVISED:	
SCALE:	As indicated
<b>AD.1</b>	
Project Phase <b>PERMIT SET</b>	
COPYRIGHT © 2015 BY LAVALLEE BRENSINGER PROFESSIONAL ASSOCIATION. ALL RIGHTS RESERVED. NO REPRODUCTION WITHOUT PERMISSION.	