

160 Veranda Street
 Portland, Maine 04103
 T: 207.221.2240
 F: 207.221.2246
 Web: www.allied-eng.com



Owner

**PAYSON-SMITH HALL
 CHEMISTRY LAB
 RENOVATION**

96 Falmouth Street, Portland ME
 04101

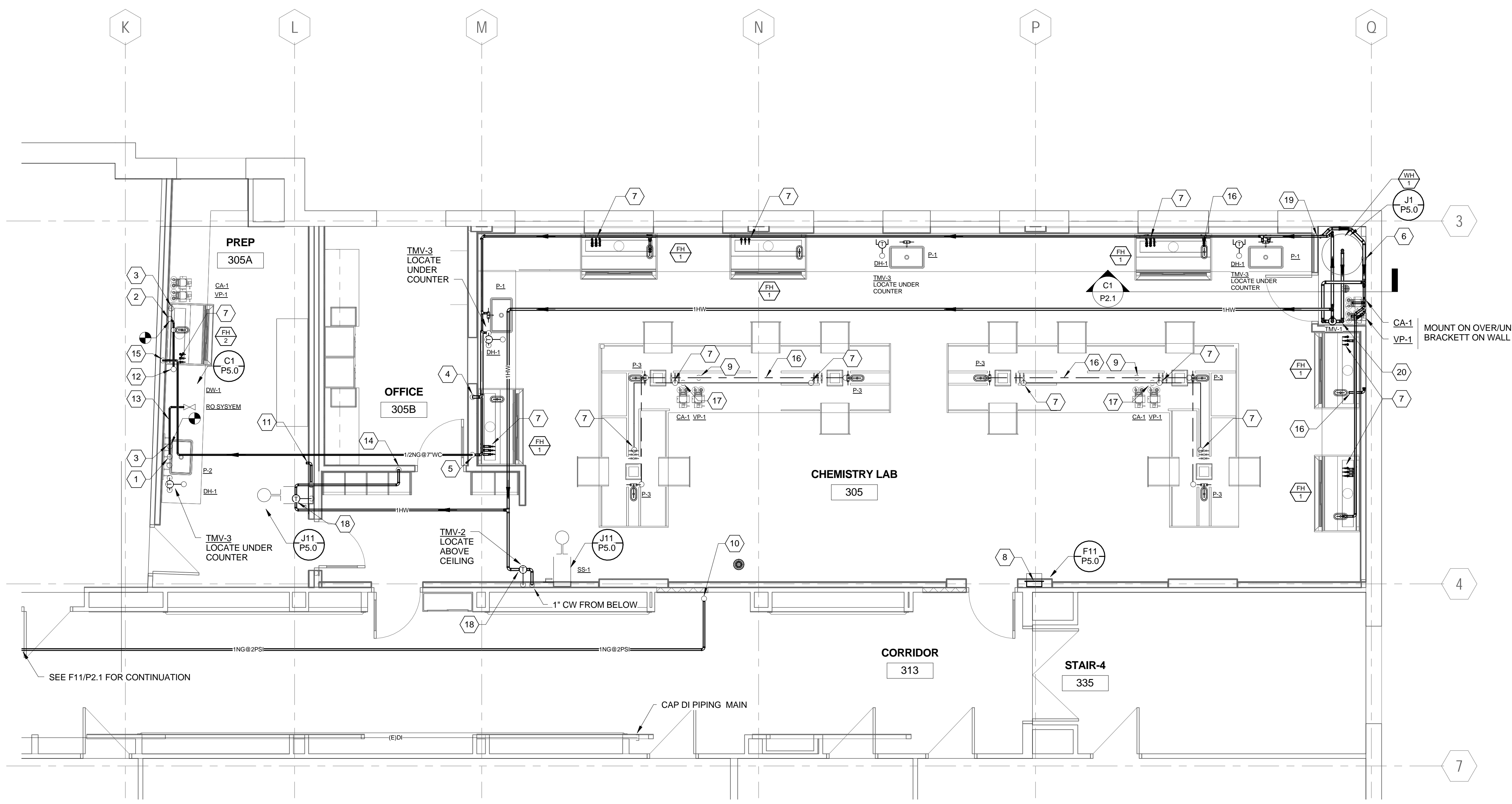
NO.	DESCRIPTION	DATE



CONTENT: PLUMBING FLOOR PLANS - SUPPLY	
DRAWN BY:	SGH
PROJECT NO:	14-075-00
DATE:	01/09/2015
REVISED:	
SCALE:	AS NOTED
P2.0	
Project Phase BID DOCUMENTS	
<small>COPYRIGHT © 2014 BY LAVALLEE BRENSINGER PROFESSIONAL ASSOCIATION. ALL RIGHTS RESERVED. NO REPRODUCTION WITHOUT PERMISSION.</small>	

- KEYED NOTES:**
1. REUSE (E)1/2"HW AND (E)1/2"CW FOR P-2, RO SUPPLY AND DH-1.
 2. REUSE (E)1/2"CW FOR HOOD CUP SINK AND DW-1.
 3. (E)1/2" NG FROM BELOW. CUT, CAP AND ABANDON ABOVE FLOOR AND UNDER CASEWORK.
 4. 1 1/4" CW FROM BELOW.
 5. 1"NG FROM BELOW. 1"NG IN CASEWORK UTILITY CHASE SERVING HOODS IN CHEM LAB 305 AND 1/2"NG TO PREP ROOM 305A HOOD.
 6. 1 1/4" CW INLET TO WATER HEATER.
 7. 1/2" NG, 1/2" CA & 1/2" VAC TO HOOD SINGLE SIDED TURRETS AND DECK MOUNTED DOUBLE SIDED TURRETS.
 8. EMERGENCY GAS AND ELECTRIC SAFETY STATION RECESSED MOUNTED ON WALL 48" AFF. SEE SPEC SECTION 231123.
 9. 3/4" CW FROM BELOW.
 10. 1" GAS UP TO MUA-1.
 11. 1/2" CW TO REFRIGERATOR ICE MAKER.
 12. 1/2" CW TO DISHWASHER.
 13. 1/2" CW TO RO SYSTEM WITH SHUT-OFF VALVE.
 14. 1" CW FROM BELOW.
 15. 1/2" NG DIW FOR HOOD GAS VALVE.
 16. 1/2" CW, 1/2"NG, 1/2"CA AND 1/2"VAC IN UTILITY CHASE TO CUP SINKS AND TURRETS.
 17. 3/4" NG FROM BELOW.
 18. 3/4" HW AND 1" CW TO SAFETY STATION TMV-2.
 19. 3/4" HW AND 3/4" CW IN CHASE BEHIND CASEWORK. 1/2" HW AND 1/2" CW TO EACH P-1 AND DH-1. 1/2" CW TO EACH HOOD CUP SINK.
 20. 1" HW AND 1" CW TO TMV-1.

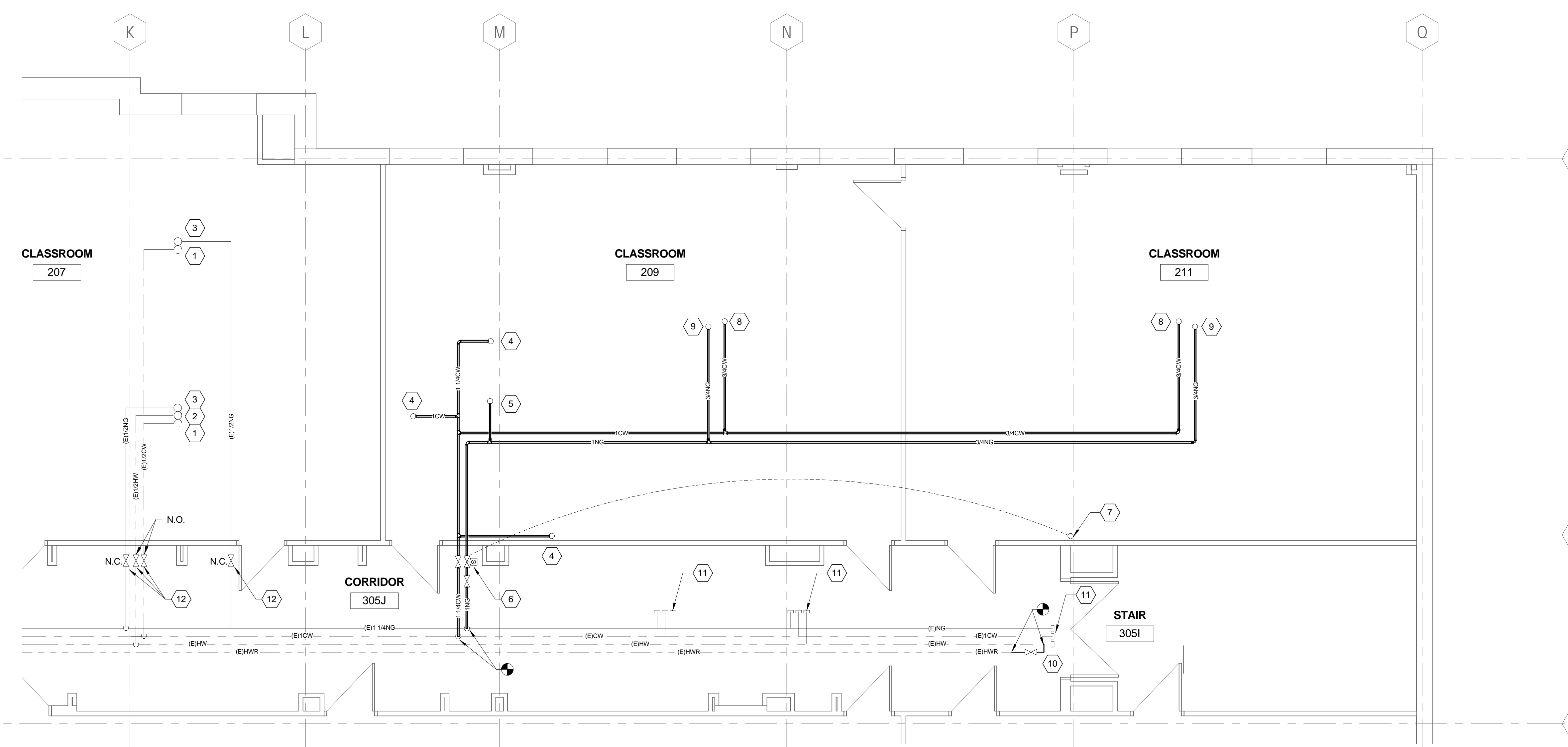
- GENERAL NOTES:**
1. SEAL FLOOR PENETRATIONS WITH FIRESTOPPING.



E1 THIRD FLOOR PLAN - SUPPLY
 1/4" = 1'-0"

- KEYED NOTES:**
1. (E) 1/2" CW UP THROUGH FLOOR.
 2. (E) 1/2" HW UP THROUGH FLOOR.
 3. (E) 1/2" NG UP THROUGH FLOOR.
 4. 1" CW UP THROUGH FLOOR.
 5. 1" NG UP THROUGH FLOOR.
 6. 1" NG SOLENOID VALVE CONNECTED TO EMERGENCY GASELEC SHUT-OFF PANEL LOCATED IN CHEMISTRY LAB 305 ABOVE.
 7. CONTROL WIRING FROM GAS/ELEC EMERGENCY SHUT-OFF PANEL TO GAS SOLENOID VALVE. SEE ELEC DRAWINGS FOR CONTINUATION.
 8. 3/4" CW UP THROUGH FLOOR.
 9. 3/4" NG UP THROUGH FLOOR.
 10. TIE HWR TO HW MAIN WITH BALANCING VALVE.
 11. CAP (E)PIPING MAINS.
 12. PROVIDE ISOLATION VALVES IN (E) PIPING.

- GENERAL NOTES:**
1. PROVIDE ISOLATION VALVES AT NEW PIPING CONNECTIONS TO EXISTING.
 2. PROVIDE ISOLATION VALVES IN EXISTING SUPPLY PIPING SERVING LAB AND PREP LAB SPACES.



J1 SECOND FLOOR PLAN - SUPPLY
 1/4" = 1'-0"

N:\Projects\2014\14-075 - USM Payson 405 Laboratory Renovation\00 Drawing Files\1407524.rvt
 1/8/2015 9:01:25 AM